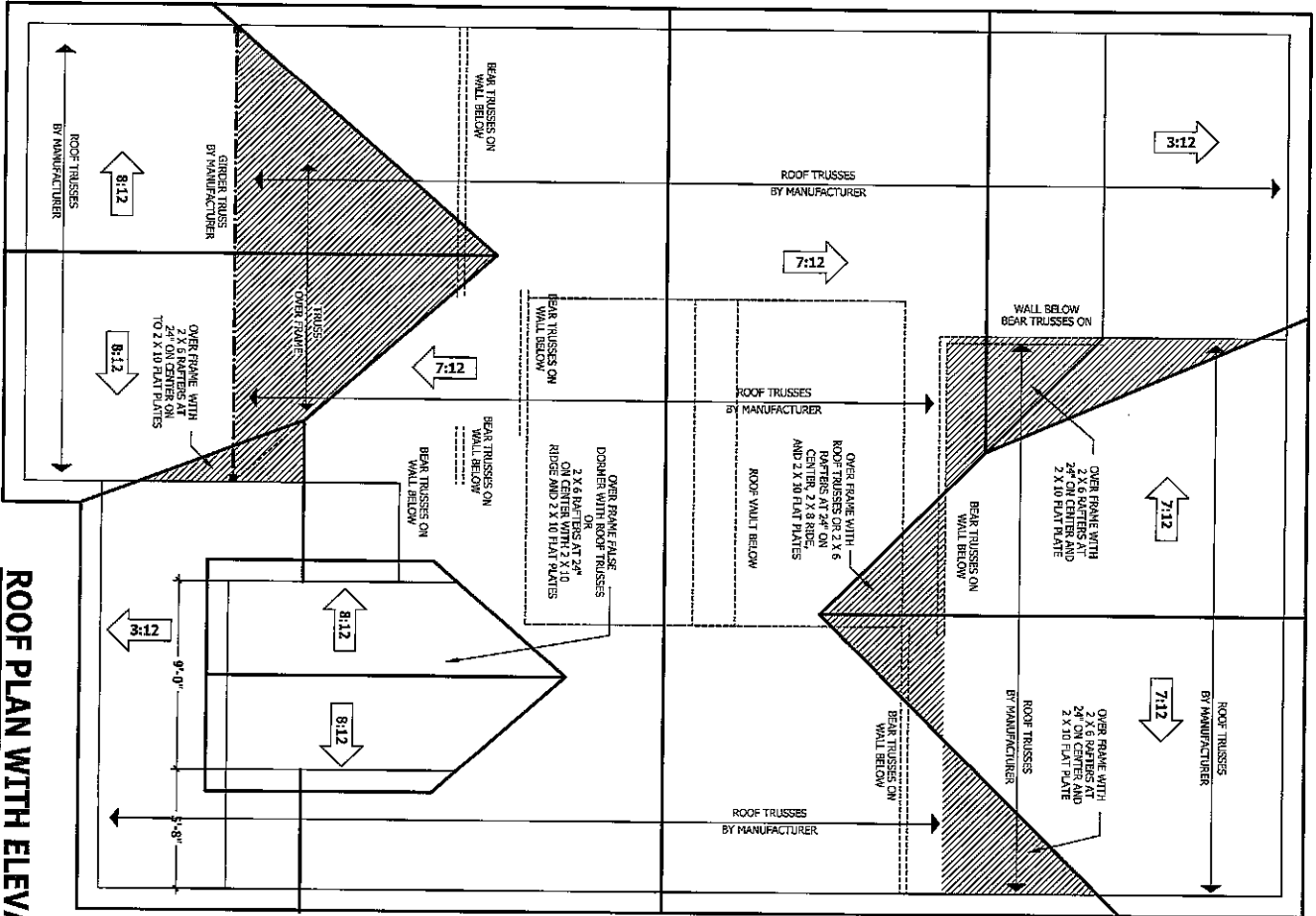


ROOF TRUSS REQUIREMENTS

TRUSS DESIGN: Trusses to be designed and engineered in accordance with the American Institute of Steel Construction, Inc. (AISC) Specification for Structural Steel Buildings, 13th Edition, and the American Institute of Steel Construction, Inc. Allow for proper bracing and connections. All required anchors for trusses due to uplift or loading shall meet the requirements as specified on the truss schematics.

BRACING: All trusses shall be designed for bracing on SFR #2 plates or equivalent unless noted otherwise.



ROOF PLAN WITH ELEVATION - A

SCALE 1/4" = 1'-0"

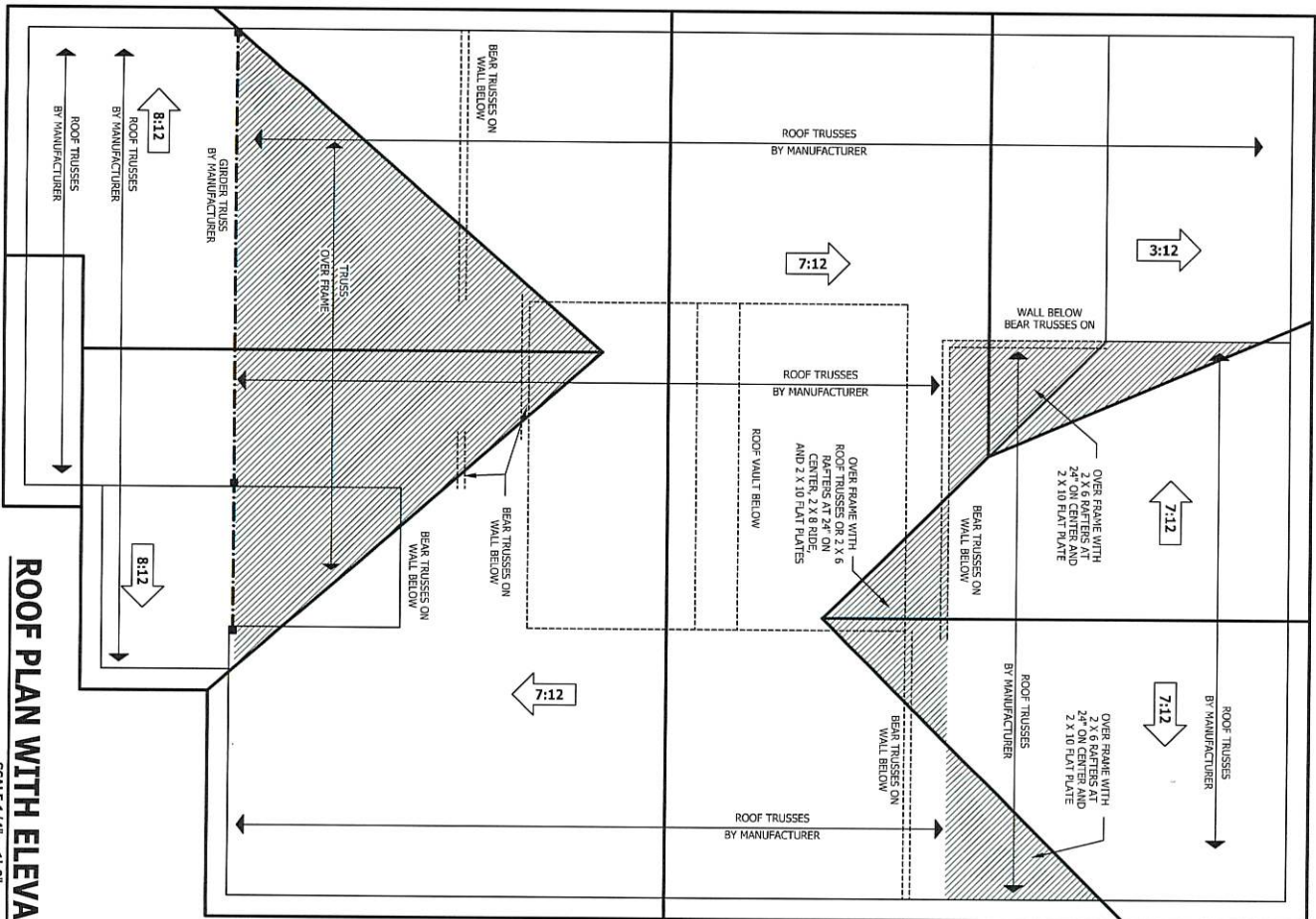
SQUARE FOOTAGE	
COVERED PORCH	111.80
DECK	28.80
SCREENED PORCH	28.80
SCREENED PATIO	18.80
TOTAL	188.20

HAYNES WEAVER HOMES
HOME PLANS, INC.
P.O. Box 702, Wake Forest, NC 27888 919-485-6100 Fax 1-866-491-0396
910.630.2100 • 919.606.4696

ROOF PLAN WITH ELEVATION - A
Lindsay 1553

THIS PLAN IS THE PROPERTY OF HAYNES WEAVER HOMES, INC. AND IS NOT TO BE REPRODUCED, COPIED, OR TRANSMITTED IN ANY FORM OR BY ANY MEANS, ELECTRONIC OR MECHANICAL, INCLUDING PHOTOCOPYING, RECORDING, OR BY ANY INFORMATION STORAGE AND RETRIEVAL SYSTEM. WITHOUT THE WRITTEN PERMISSION OF HAYNES WEAVER HOMES, INC. THIS PLAN IS NOT TO BE USED FOR ANY OTHER PROJECT. THE ENGINEER AND ARCHITECT SHALL BE RESPONSIBLE FOR THE ACCURACY OF THE INFORMATION PROVIDED ON THIS PLAN.

ROOF TRUSS REQUIREMENTS
 TRUSS DESIGN. Trusses to be designed and engineered in accordance with these drawings. Any variation with these drawings must be brought to the attention of the Designer before construction begins. ATTENTION: The Designer, Weaver Development Company, Inc., shall meet the requirements as specified on the truss schematic BEARING. All trusses shall be designed for bearing on SIF #2 plates or ledgers unless noted otherwise.



ROOF PLAN WITH ELEVATION -B

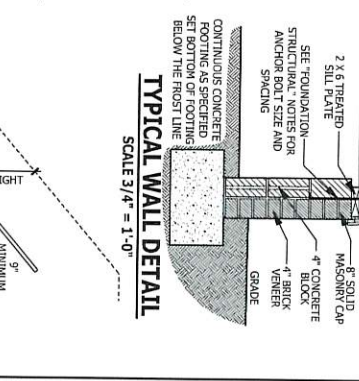
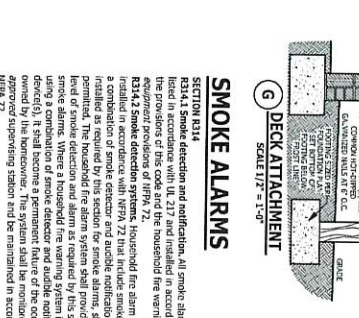
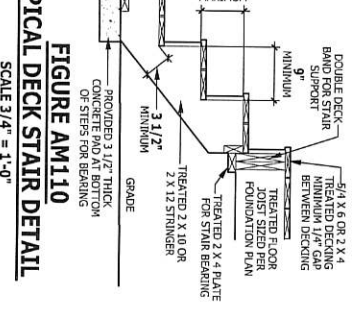
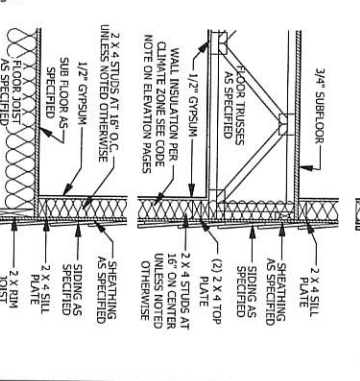
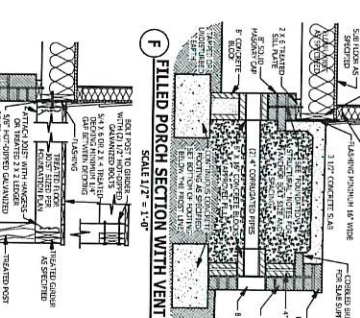
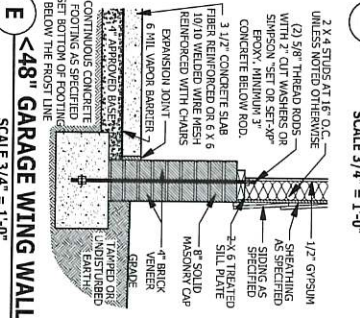
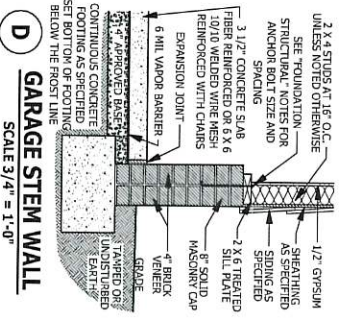
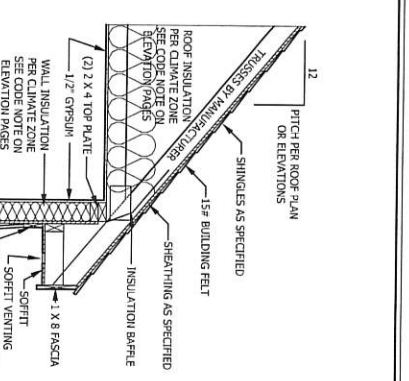
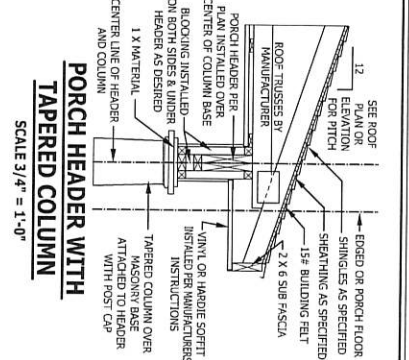
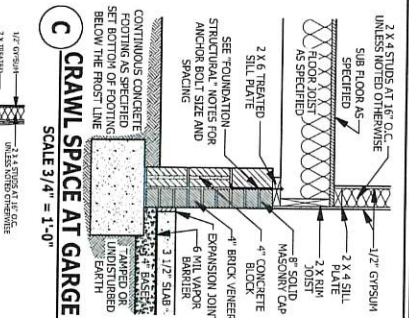
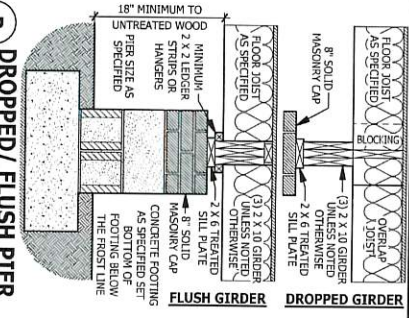
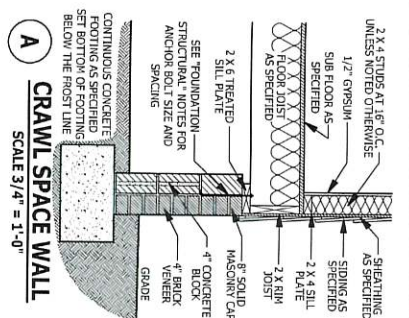
SCALE 1/4" = 1'-0"

SQUARE FOOTAGE	
1st FLOOR	1,180.00
2nd FLOOR	1,180.00
3rd FLOOR	1,180.00
4th FLOOR	1,180.00
5th FLOOR	1,180.00
6th FLOOR	1,180.00
7th FLOOR	1,180.00
8th FLOOR	1,180.00
9th FLOOR	1,180.00
10th FLOOR	1,180.00
11th FLOOR	1,180.00
12th FLOOR	1,180.00
13th FLOOR	1,180.00
14th FLOOR	1,180.00
15th FLOOR	1,180.00
16th FLOOR	1,180.00
17th FLOOR	1,180.00
18th FLOOR	1,180.00
19th FLOOR	1,180.00
20th FLOOR	1,180.00
21st FLOOR	1,180.00
22nd FLOOR	1,180.00
23rd FLOOR	1,180.00
24th FLOOR	1,180.00
25th FLOOR	1,180.00
26th FLOOR	1,180.00
27th FLOOR	1,180.00
28th FLOOR	1,180.00
29th FLOOR	1,180.00
30th FLOOR	1,180.00
31st FLOOR	1,180.00
32nd FLOOR	1,180.00
33rd FLOOR	1,180.00
34th FLOOR	1,180.00
35th FLOOR	1,180.00
36th FLOOR	1,180.00
37th FLOOR	1,180.00
38th FLOOR	1,180.00
39th FLOOR	1,180.00
40th FLOOR	1,180.00
41st FLOOR	1,180.00
42nd FLOOR	1,180.00
43rd FLOOR	1,180.00
44th FLOOR	1,180.00
45th FLOOR	1,180.00
46th FLOOR	1,180.00
47th FLOOR	1,180.00
48th FLOOR	1,180.00
49th FLOOR	1,180.00
50th FLOOR	1,180.00
51st FLOOR	1,180.00
52nd FLOOR	1,180.00
53rd FLOOR	1,180.00
54th FLOOR	1,180.00
55th FLOOR	1,180.00
56th FLOOR	1,180.00
57th FLOOR	1,180.00
58th FLOOR	1,180.00
59th FLOOR	1,180.00
60th FLOOR	1,180.00
61st FLOOR	1,180.00
62nd FLOOR	1,180.00
63rd FLOOR	1,180.00
64th FLOOR	1,180.00
65th FLOOR	1,180.00
66th FLOOR	1,180.00
67th FLOOR	1,180.00
68th FLOOR	1,180.00
69th FLOOR	1,180.00
70th FLOOR	1,180.00
71st FLOOR	1,180.00
72nd FLOOR	1,180.00
73rd FLOOR	1,180.00
74th FLOOR	1,180.00
75th FLOOR	1,180.00
76th FLOOR	1,180.00
77th FLOOR	1,180.00
78th FLOOR	1,180.00
79th FLOOR	1,180.00
80th FLOOR	1,180.00
81st FLOOR	1,180.00
82nd FLOOR	1,180.00
83rd FLOOR	1,180.00
84th FLOOR	1,180.00
85th FLOOR	1,180.00
86th FLOOR	1,180.00
87th FLOOR	1,180.00
88th FLOOR	1,180.00
89th FLOOR	1,180.00
90th FLOOR	1,180.00
91st FLOOR	1,180.00
92nd FLOOR	1,180.00
93rd FLOOR	1,180.00
94th FLOOR	1,180.00
95th FLOOR	1,180.00
96th FLOOR	1,180.00
97th FLOOR	1,180.00
98th FLOOR	1,180.00
99th FLOOR	1,180.00
100th FLOOR	1,180.00

HAYNES WEAVER
HOME PLANS, INC.
 P.O. Box 702, WAKE FOREST, NC 27588 919-435-6180 FAX 1-866-491-0396
 910.630.2100 • 919.606.4696
(In Wakelet Drive, Cary, North Carolina)

ROOF PLAN WITH ELEVATION - B
Lindsay 1553

PROCESSED BY: [Name]
 DATE: [Date]
 SCALE: [Scale]
 SHEET: [Sheet Number]



DECK BRACING
 SECTION A1009 Deck bracing. Deck shall be braced to provide lateral stability. The following are acceptable means to provide lateral stability. Deck fasteners shall have a minimum 4'-0\"/>

WEEP SCREED
 SECTION A1010 Weep screed. Weep screed shall be installed per manufacturer's instructions and shall be installed in accordance with Figure A1010.2. The weep screed shall be installed in accordance with Figure A1010.2. The weep screed shall be installed in accordance with Figure A1010.2.

SMOKE ALARMS
 SECTION R314 Smoke detection and notification. All smoke alarms shall be installed in accordance with UL 217 and installed in accordance with the manufacturer's instructions. The following are acceptable means to provide lateral stability. Deck fasteners shall have a minimum 4'-0\"/>

STAIRWAY NOTES
 SECTION R311.7.2 Handrails. The minimum handrail height shall be 34 inches (889 mm) measured vertically from the top surface of the handrail to the top surface of the handrail. The maximum handrail height shall be 38 inches (965 mm) measured vertically from the top surface of the handrail to the top surface of the handrail.

TYPICAL STAIR DETAIL
 SECTION R311.7.2 Handrails. The minimum handrail height shall be 34 inches (889 mm) measured vertically from the top surface of the handrail to the top surface of the handrail. The maximum handrail height shall be 38 inches (965 mm) measured vertically from the top surface of the handrail to the top surface of the handrail.

POST	TRAILER	MAX. GROSS WEIGHT	MAX. GROSS AXLE WEIGHT	MAX. GROSS TONGUE WEIGHT	MAX. GROSS CUMULATIVE WEIGHT
4 X 4	48 SF	4,000	1,000	1,000	10,000
4 X 6	120 SF	6,000	1,500	1,500	15,000

HAYNES WEAVER HOMES
 HOME PLANS, INC.
 P.O. Box 702, Wake Forest, NC 27588 919-485-6180 Fax 1-866-491-0386
 910.630.2100 • 919.606.4696

TYPICAL DETAILS
Lindsay 1553