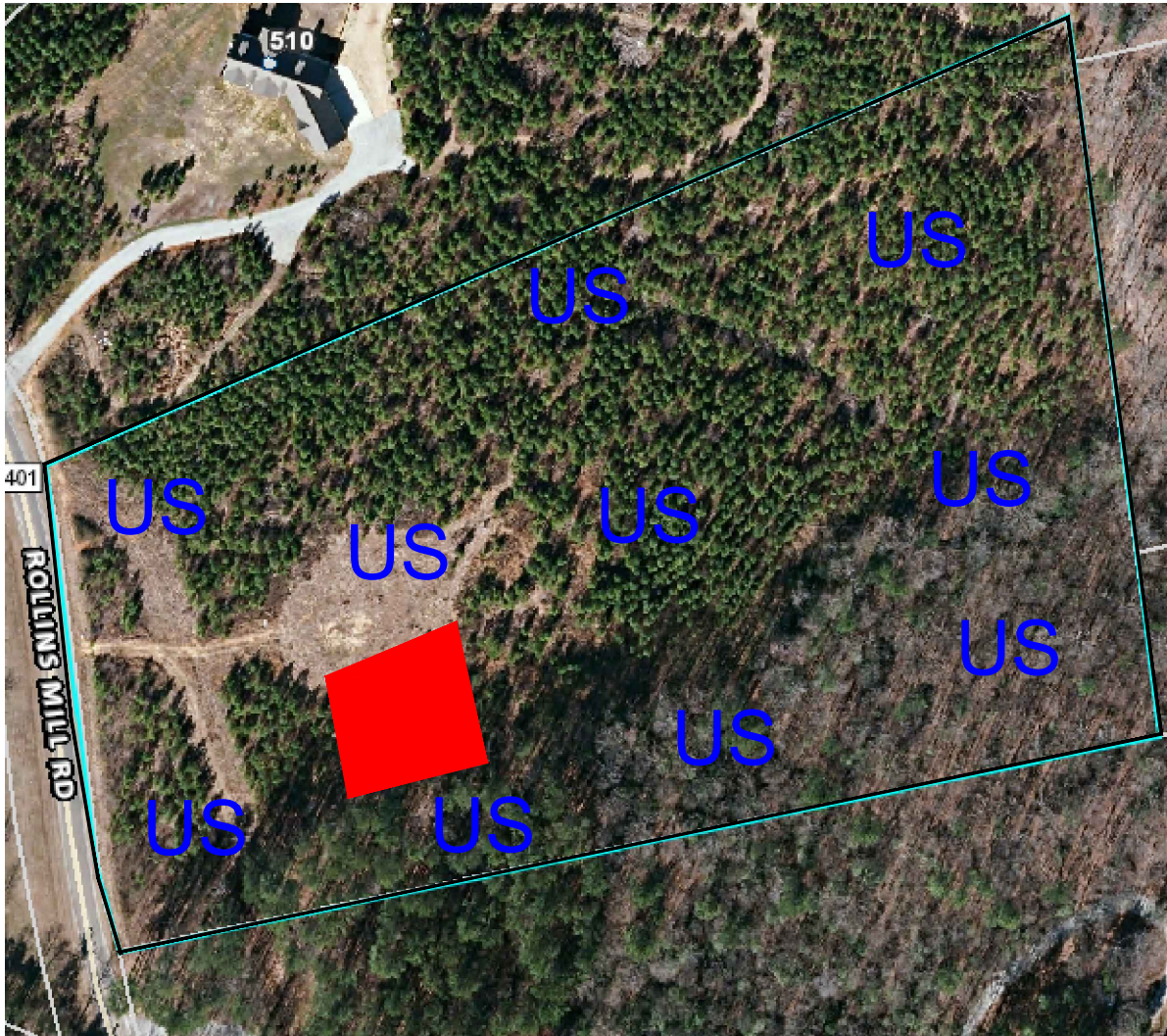


Preliminary Soil Evaluation

~10 acres - Rollins Mill Road Harnett County



Legend



Areas contain soils with 30 inches or more of useable material and have potential for conventional, modified conventional, LPP or ultra-shallow conventional septic systems. There may be inclusion of soils 24-29 inches to a restrictive horizon that will have potential for LPP septic systems.

US Areas not evaluated

*Preliminary Soils Evaluation

*Soil boundary was sketched onto a preliminary map of the property supplied by the client's surveyor.

*Not a Survey.

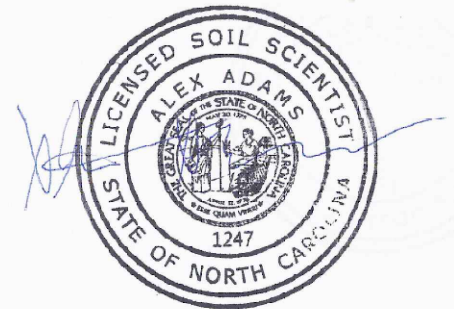
*Septic system setbacks listed below for new lots.

- 1) 10' from property lines.
- 2) 100' from wells for primary systems.
- 3) 50' from surface waters (streams, ponds, lakes).

*Any mechanical disturbances such as grading, cutting and filling of the suitable soil areas can render areas unsuitable for future septic systems.

*See accompanying report for additional information.

*Due to Soil Variability, Adams soil consulting cannot guarantee that the areas shown as suitable will be permitted by the local Health Department.



GRAPHIC SCALE

1" = 150'



Adams
Soil Consulting
919-414-6761
Job #832