



VICINITY MAP (NTS)

LEGEND

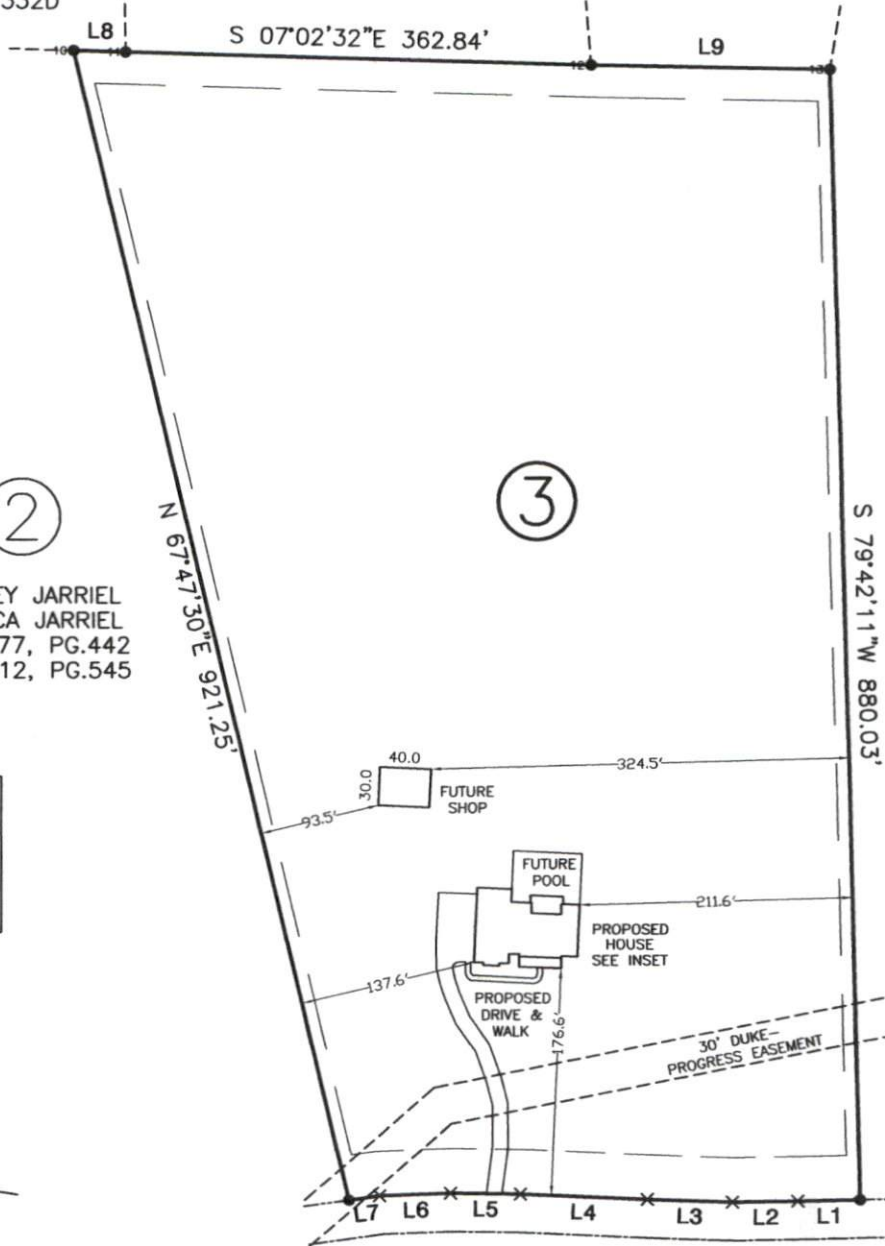
- NTS NOT TO SCALE
- EIP EXISTING IRON PIPE
- PP POWER POLE
- W/M WATER METER
- TB TELEPHONE BOX
- IPS IRON PIPE SET
- CP&L TRANSFORMER
- CATV CABLE TV BOX
- L POLE LIGHT POLE
- OHPL OVERHEAD POWER LINE
- F.E.S. FLARED END SECTION (PIPE)
- RCP REINFORCED CONC. PIPE
- B.O.C. BACK OF CURB
- F.H. FIRE HYDRANT
- C/O SEWER CLEAN OUT
- EIS EXISTING IRON STAKE
- M.H. MANHOLE
- ECM EXISTING CONCRETE MONUMENT
- P.K. PARKER KALON NAIL

Course	Bearing	Distance
L1	N 10°12'08" W	48.28'
L2	N 09°33'48" W	50.81'
L3	N 06°50'41" W	66.05'
L4	N 06°17'05" W	98.98'
L5	N 08°06'20" W	54.35'
L6	N 10°52'07" W	55.29'
L7	N 16°41'24" W	24.15'
L8	S 07°03'15" E	40.44'
L9	S 07°31'15" E	185.07'

PERRY D. CARLYLE
LORI J. MCDANIEL
D.B.3170, PG.968
PC#F, SLIDE 332D

PERRY D. CARLYLE
LORI J. MCDANIEL
D.B.3309, PG.302
PC#F, SLIDE 332D

CHRISSIE A. WALKER
DAVID M. WALKER
D.B.3463, PG.82
M.B.2003, PG.1205

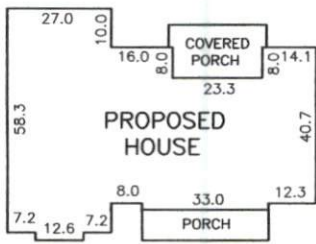


2

WESLEY JARRIEL
JESSICA JARRIEL
D.B.3177, PG.442
M.B.2012, PG.545

3

MATTHEW MAXFIELD
D.B.3467, PG.001
PC#F, SLIDE 219C



INSET (NTS)

N.C. GRID NORTH, NAD 83
(REF: M.B.2012, PG.545)

NOTE: SHOWN IS LOT 3 OF
MATTHEW PRINCE S/D
REF: M.B.2012, PG.545

ROLLINS MILL ROAD
(60' PUBLIC R/W)



GRAPHIC SCALE - FEET

AREA = 10.001 ACRES
XXX ROLLINS MILL ROAD
PIN# 0626-72-3924.000