

THIS LAYOUT IS TO BE USED AS A TRUSS PLACEMENT GUIDE ONLY.
PLEASE REFER TO BUILDING PLANS FOR BUILDING CONSTRUCTION AND DETAILS,
SUCH AS PLUMBING OR DUCT DROPS.

PROPOSED DESIGN-
NOT FOR
CONSTRUCTION

Job #

Q-2002369

225 Chicora Club
225 Chicora Club rd
Dunn NC

Date Quoted:

Designer:

Devon Thompson

Guy C Lee - Clayton
151 Hwy 42 E
Clayton, NC
27520

Peak Truss
Builders, LLC
PO Box 340, New Hill, NC 27562

- Notes:
- Exterior dimensions shown are assumed to be:
 - ☐ Out-to-out of stud
 - ☒ Out-to-out of sheathing
 - Adjust truss locations as needed for plumbing and mechanical clearance. Unless otherwise noted, trusses may be shifted as long as O.C. spacing shown is not exceeded.
 - Do not cut, drill, or otherwise damage any part of any truss without prior approval from Peak Truss.
 - Do not approve drawings if any information herein is unclear. Once ordered trusses will be fabricated as approved.
 - Please contact Peak Truss Builders with any questions. We are available to help any way we can. We can be reached at 919-545-5555 or sales@peaktruss.com

Roof Truss Loading per 2018 NC Residential Code

Top Chord Live Load	20# PSF
Top Chord Dead Load	10# PSF
Bottom Chord Live Load	0# PSF
Bottom Chord Dead Load	10# PSF

Trusses are designed for additional storage load wherever a 42"x24" box will fit between the webs.

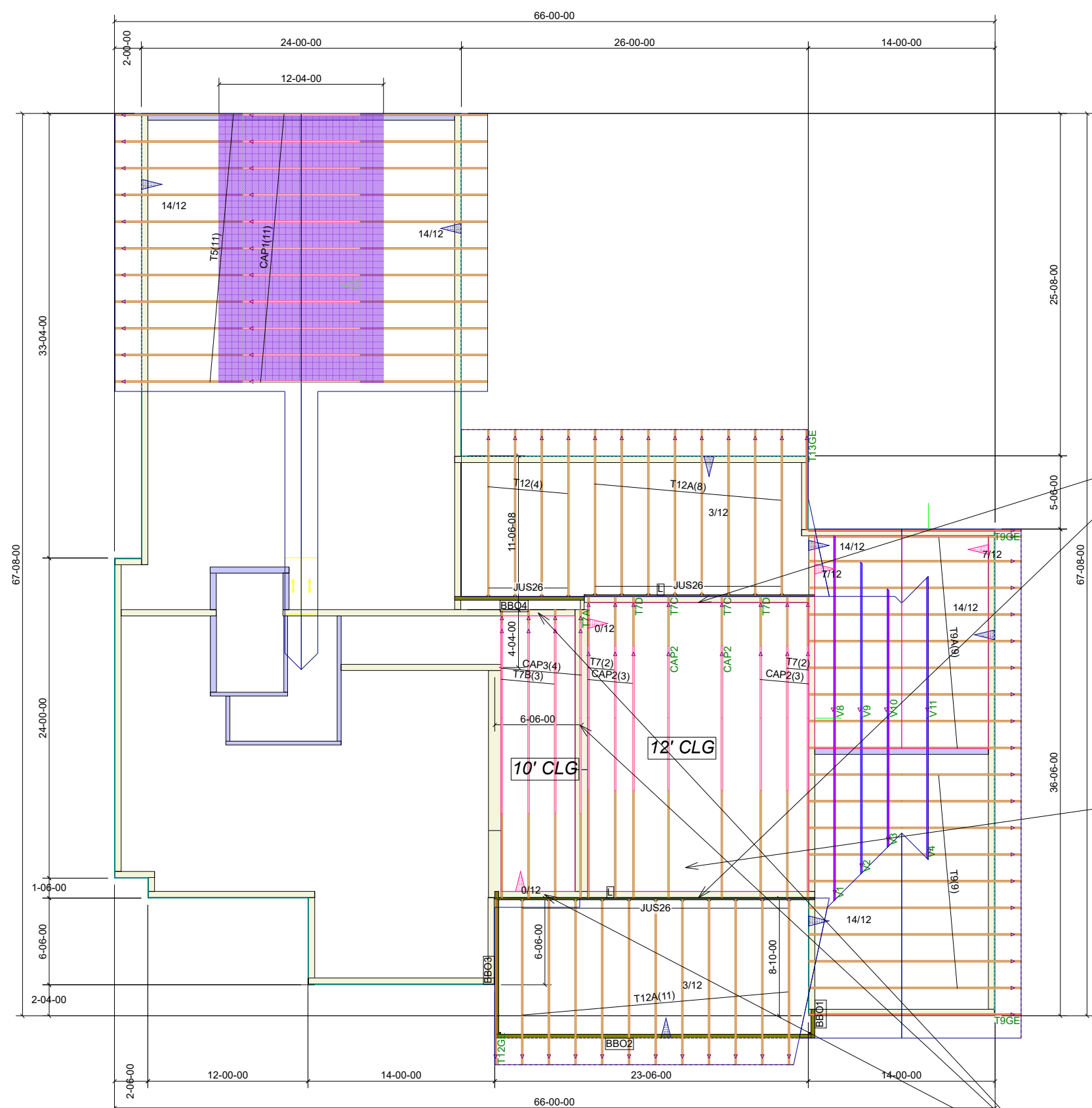
△ - This symbol denotes left end of truss as shown on truss drawings

● - Approximate location of toilet drop. Builder please confirm.

Truss connections by others:

⊔ - Nailed

⊔ - Ledger



Bearing heights 9' 1-1/2" TYP

Trusses bearing on 12' 1-1/2" plate height

Shed dormer by others.
Trusses spaced for transom windows - please verify.

225 Chicora Club
Roof Trusses
2' OC, 2' Overhang

Truss Connector Total List		
Manuf	Product	Qty
USP	JUS26	23

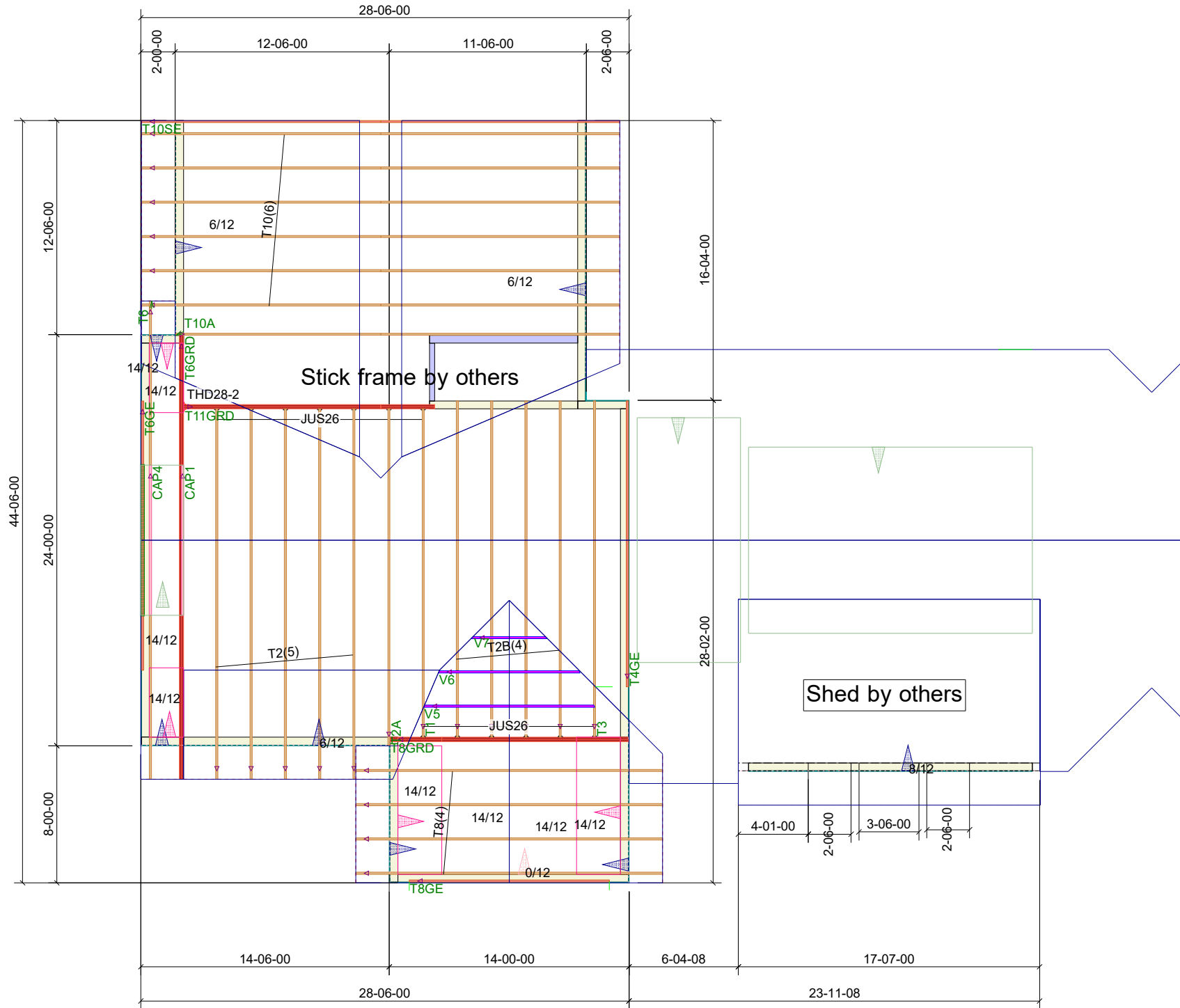
Trusses bearing on 10' 1-1/2" plate height

10' CLG

12' CLG

THIS LAYOUT IS TO BE USED AS A TRUSS PLACEMENT GUIDE ONLY.
PLEASE REFER TO BUILDING PLANS FOR BUILDING CONSTRUCTION AND DETAILS,
SUCH AS PLUMBING OR DUCT DROPS.

PROPOSED DESIGN-
NOT FOR
CONSTRUCTION



Notes:
 1. Exterior dimensions shown are assumed to be:
 Out-to-out of stud
 Out-to-out of sheathing
 2. Adjust truss locations as needed for plumbing and mechanical clearance. Unless otherwise noted, trusses may be shifted as long as O.C. spacing shown is not exceeded.
 3. Do not cut, drill, or otherwise damage any part of any truss without prior approval from Peak Truss.
 4. Do not approve drawings if any information herein is unclear. Once ordered trusses will be fabricated as approved.
 5. Please contact Peak Truss Builders with any questions. We are available to help any way we can. We can be reached at 919-545-5555 or sales@peaktruss.com

Roof Truss Loading per 2018 NC Residential Code
 Top Chord Live Load 20# PSF
 Top Chord Dead Load 10# PSF
 Bottom Chord Live Load 0# PSF
 Bottom Chord Dead Load 10# PSF

Trusses are designed for additional storage load wherever a 42"x24" box will fit between the webs.

△ - This symbol denotes left end of truss as shown on truss drawings

● - Approximate location of toilet drop. Builder please confirm.

Truss connections by others:

N-Nailed
 L-Ledger

Job #

Q-2002369

225 Chicora Club
 225 Chicora Club rd
 Dunn NC


Date Quoted:

Designer:

Devon Thompson

Guy C Lee - Clayton
 151 Hwy 42 E
 Clayton, NC
 27520

**Peak Truss
 Builders, LLC**
 PO Box 340, New Hill, NC 27562



THIS LAYOUT IS TO BE USED AS A TRUSS PLACEMENT GUIDE ONLY.
PLEASE REFER TO BUILDING PLANS FOR BUILDING CONSTRUCTION AND DETAILS,
SUCH AS PLUMBING OR DUCT DROPS.

PROPOSED DESIGN-
NOT FOR
CONSTRUCTION

Job #

Q-2002369

225 Chicora Club
225 Chicora Club rd
Dunn NC

Date Quoted:

Designer:

Devon Thompson

Guy C Lee - Clayton
151 Hwy 42 E
Clayton, NC
27520

**Peak Truss
Builders, LLC**
PO Box 340, New Hill, NC 27562

- Notes:
- Exterior dimensions shown are assumed to be:
 - ☐ Out-to-out of stud
 - ☒ Out-to-out of sheathing
 - Adjust truss locations as needed for plumbing and mechanical clearance. Unless otherwise noted, trusses may be shifted as long as O.C. spacing shown is not exceeded.
 - Do not cut, drill, or otherwise damage any part of any truss without prior approval from Peak Truss.
 - Do not approve drawings if any information herein is unclear. Once ordered trusses will be fabricated as approved.
 - Please contact Peak Truss Builders with any questions. We are available to help any way we can. We can be reached at 919-545-5555 or sales@peaktruss.com

Roof Truss Loading per 2018 NC Residential Code

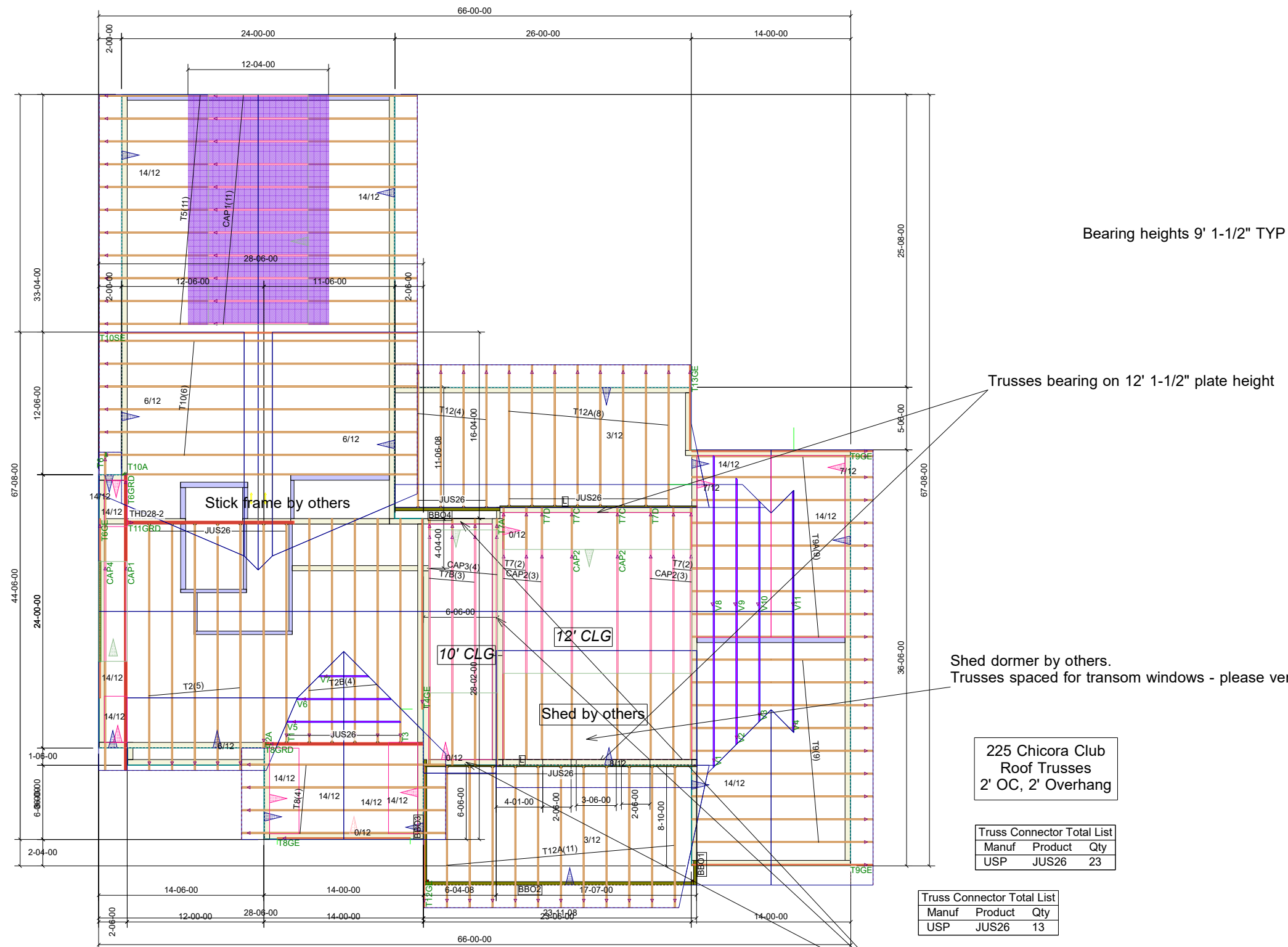
Top Chord Live Load 20# PSF
Top Chord Dead Load 10# PSF
Bottom Chord Live Load 0# PSF
Bottom Chord Dead Load 10# PSF

Trusses are designed for additional storage load wherever a 42"x24" box will fit between the webs.

- △ - This symbol denotes left end of truss as shown on truss drawings
- - Approximate location of toilet drop. Builder please confirm.

Truss connections by others:

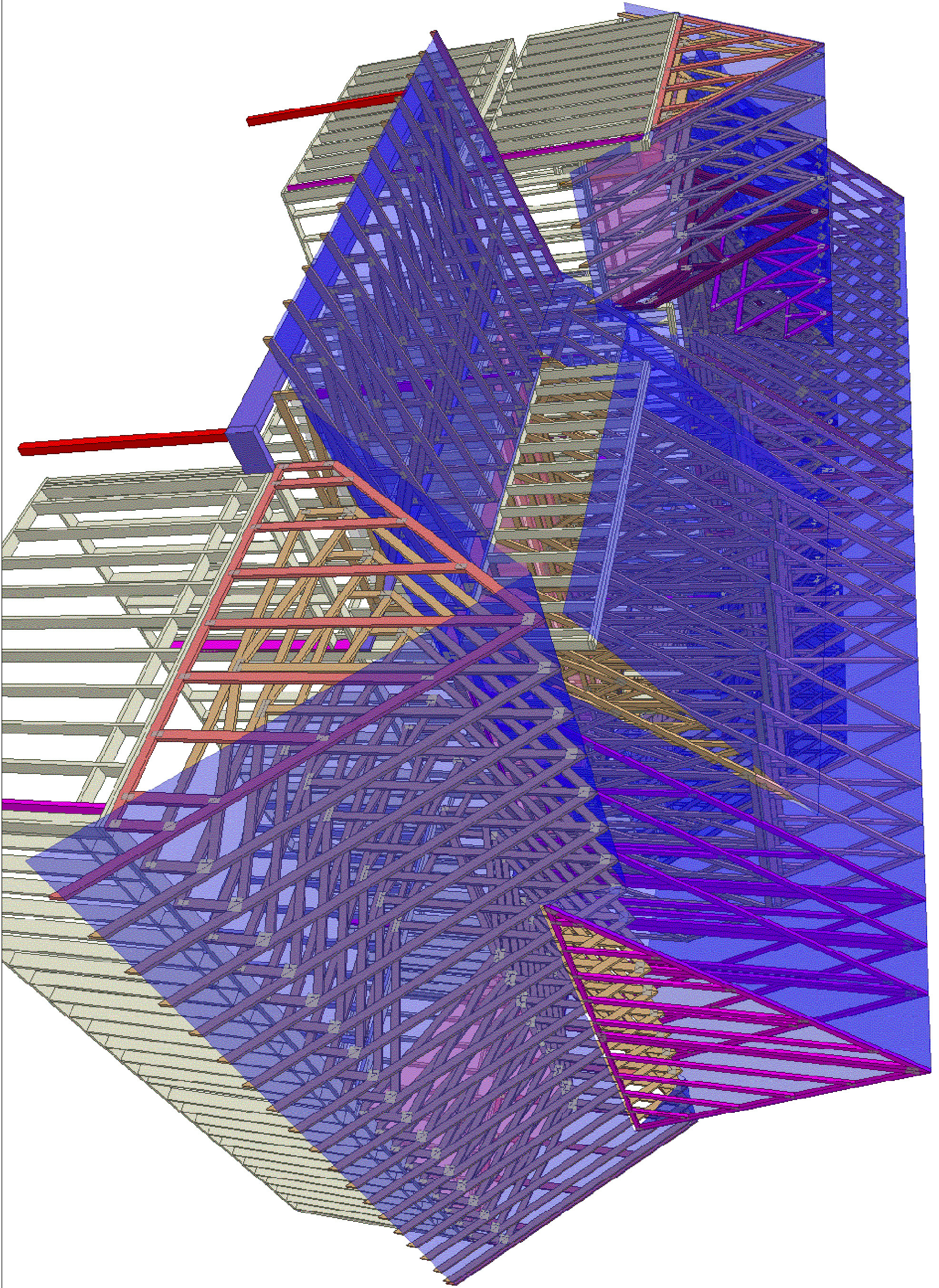
- ⊖ - Nailed
- ⊕ - Ledger



225 Chicora Club
Roof Trusses
2' OC, 2' Overhang

Truss Connector Total List		
Manuf	Product	Qty
USP	JUS26	23

Truss Connector Total List		
Manuf	Product	Qty
USP	JUS26	13



**Peak Truss
Builders, LLC**

PO Box 340, New Hill, NC 27562

Guy C Lee - Clayton
151 Hwy 42 E
Clayton, NC
27520

Date Quoted:

Designer:
Devon Thompson

225 Chicora Club
225 Chicora Club rd
Dunn NC

Job #

Q-2002369