

Trenco
818 Soundside Rd
Edenton, NC 27932

Re: J0920-4404
Lot 44 Happy Acres

The truss drawing(s) referenced below have been prepared by Truss Engineering Co. under my direct supervision based on the parameters provided by Comtech, Inc - Fayetteville.

Pages or sheets covered by this seal: E14945159 thru E14945167

My license renewal date for the state of North Carolina is December 31, 2020.

North Carolina COA: C-0844



October 6,2020

Lassiter, Frank

IMPORTANT NOTE: The seal on these truss component designs is a certification that the engineer named is licensed in the jurisdiction(s) identified and that the designs comply with ANSI/TPI 1. These designs are based upon parameters shown (e.g., loads, supports, dimensions, shapes and design codes), which were given to MiTek or TRENCO. Any project specific information included is for MiTek's or TRENCO's customers file reference purpose only, and was not taken into account in the preparation of these designs. MiTek or TRENCO has not independently verified the applicability of the design parameters or the designs for any particular building. Before use, the building designer should verify applicability of design parameters and properly incorporate these designs into the overall building design per ANSI/TPI 1, Chapter 2.

Job	Truss	Truss Type	Qty	Ply	Lot 44 Happy Acres	E14945159
J0920-4404	ET1	Floor Supported Gable	1	1	Job Reference (optional)	

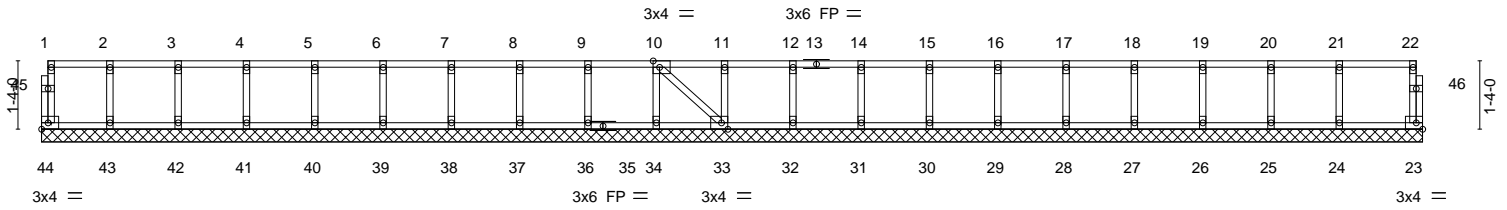
Comtech, Inc., Fayetteville, NC - 28314,

8.330 s Jul 22 2020 MiTek Industries, Inc. Tue Oct 6 10:03:09 2020 Page 1
ID:Yka1B0Lf1uPsElrXS89ZzOzv2un-?vpGsH4BiLetwr0RrNdJPWH6NF2V?PMnum?7KYyWA7G

0-1-8

0-1-8

Scale = 1:45.0



26-11-8
26-11-8

Plate Offsets (X,Y)-- [10:0-1-8,Edge], [33:0-1-8,Edge]

LOADING (psf)	SPACING-	2-0-0	CSI.	DEFL.	in (loc)	l/defl	L/d	PLATES	GRIP
TCLL 40.0	Plate Grip DOL	1.00	TC 0.08	Vert(LL)	n/a	-	n/a	MT20	244/190
TCDL 10.0	Lumber DOL	1.00	BC 0.01	Vert(CT)	n/a	-	n/a		
BCLL 0.0	Rep Stress Incr	YES	WB 0.04	Horz(CT)	0.00	23	n/a		
BCDL 5.0	Code	IRC2015/TPI2014	Matrix-S					Weight: 119 lb	FT = 20%F, 11%E

LUMBER-
TOP CHORD 2x4 SP No.1 (flat)
BOT CHORD 2x4 SP No.1 (flat)
WEBS 2x4 SP No.3 (flat)
OTHERS 2x4 SP No.3 (flat)

BRACING-
TOP CHORD Structural wood sheathing directly applied or 6-0-0 oc purlins, except end verticals.
BOT CHORD Rigid ceiling directly applied or 10-0-0 oc bracing.

REACTIONS. All bearings 26-11-8.
(lb) - Max Grav All reactions 250 lb or less at joint(s) 44, 23, 43, 42, 41, 40, 39, 38, 37, 36, 34, 33, 32, 31, 30, 29, 28, 27, 26, 25, 24

FORCES. (lb) - Max. Comp./Max. Ten. - All forces 250 (lb) or less except when shown.

- NOTES-**
- 1) All plates are 1.5x3 MT20 unless otherwise indicated.
 - 2) Plates checked for a plus or minus 1 degree rotation about its center.
 - 3) Gable requires continuous bottom chord bearing.
 - 4) Truss to be fully sheathed from one face or securely braced against lateral movement (i.e. diagonal web).
 - 5) Gable studs spaced at 1-4-0 oc.
 - 6) Recommend 2x6 strongbacks, on edge, spaced at 10-0-0 oc and fastened to each truss with 3-10d (0.131" X 3") nails. Strongbacks to be attached to walls at their outer ends or restrained by other means.



October 6, 2020

WARNING - Verify design parameters and READ NOTES ON THIS AND INCLUDED MITEK REFERENCE PAGE MII-7473 rev. 5/19/2020 BEFORE USE.

Design valid for use only with MiTek® connectors. This design is based only upon parameters shown, and is for an individual building component, not a truss system. Before use, the building designer must verify the applicability of design parameters and properly incorporate this design into the overall building design. Bracing indicated is to prevent buckling of individual truss web and/or chord members only. Additional temporary and permanent bracing is always required for stability and to prevent collapse with possible personal injury and property damage. For general guidance regarding the fabrication, storage, delivery, erection and bracing of trusses and truss systems, see **ANSI/TPI1 Quality Criteria, DSB-89 and BCSI Building Component Safety Information** available from Truss Plate Institute, 2670 Crain Highway, Suite 203 Waldorf, MD 20601

ENGINEERING BY
TRENCO
A MiTek Affiliate

818 Soundside Road
Edenton, NC 27932

Job	Truss	Truss Type	Qty	Ply	Lot 44 Happy Acres	E14945160
J0920-4404	ET2	GABLE	1	1	Job Reference (optional)	

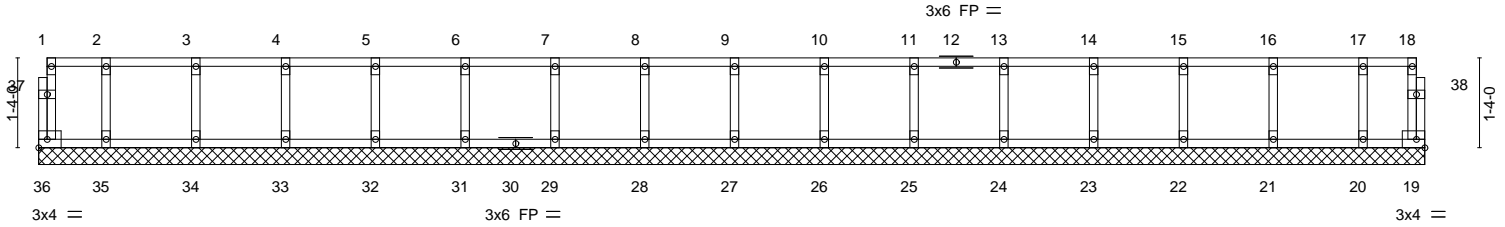
Comtech, Inc., Fayetteville, NC - 28314,

8.330 s Jul 22 2020 MiTek Industries, Inc. Tue Oct 6 10:03:10 2020 Page 1
 ID:YkalB0Lf1uPsElrXS89ZzOzv2un-U6Ne3d5pTemkX?bdO48YyqkIPfOnksgw7Qlhs_yWA7F

0-1/8

0-1/8

Scale = 1:34.2



LOADING (psf)		SPACING-		CSI.		DEFL.				PLATES		GRIP	
TCLL	40.0	Plate Grip DOL	2-0-0	TC	0.06	in	(loc)	l/defl	L/d	MT20	244/190		
TCDL	10.0	Lumber DOL	1.00	BC	0.01	Vert(LL)	n/a	-	n/a	Weight: 91 lb FT = 20%F, 11%E			
BCLL	0.0	Rep Stress Incr	YES	WB	0.03	Vert(CT)	n/a	-	n/a				
BCDL	5.0	Code IRC2015/TPI2014		Matrix-R		Horz(CT)	0.00	19	n/a				

LUMBER-
 TOP CHORD 2x4 SP No.1 (flat)
 BOT CHORD 2x4 SP No.1 (flat)
 WEBS 2x4 SP No.3 (flat)
 OTHERS 2x4 SP No.3 (flat)

BRACING-
 TOP CHORD Structural wood sheathing directly applied or 6-0-0 oc purlins, except end verticals.
 BOT CHORD Rigid ceiling directly applied or 10-0-0 oc bracing.

REACTIONS. All bearings 20-7-0.
 (lb) - Max Grav All reactions 250 lb or less at joint(s) 36, 19, 35, 34, 33, 32, 31, 29, 28, 27, 26, 25, 24, 23, 22, 21, 20

FORCES. (lb) - Max. Comp./Max. Ten. - All forces 250 (lb) or less except when shown.

- NOTES-**
- 1) All plates are 1.5x3 MT20 unless otherwise indicated.
 - 2) Plates checked for a plus or minus 1 degree rotation about its center.
 - 3) Gable requires continuous bottom chord bearing.
 - 4) Truss to be fully sheathed from one face or securely braced against lateral movement (i.e. diagonal web).
 - 5) Gable studs spaced at 1-4-0 oc.
 - 6) Recommend 2x6 strongbacks, on edge, spaced at 10-0-0 oc and fastened to each truss with 3-10d (0.131" X 3") nails. Strongbacks to be attached to walls at their outer ends or restrained by other means.



October 6, 2020

WARNING - Verify design parameters and READ NOTES ON THIS AND INCLUDED MITEK REFERENCE PAGE MII-7473 rev. 5/19/2020 BEFORE USE.

Design valid for use only with MiTek® connectors. This design is based only upon parameters shown, and is for an individual building component, not a truss system. Before use, the building designer must verify the applicability of design parameters and properly incorporate this design into the overall building design. Bracing indicated is to prevent buckling of individual truss web and/or chord members only. Additional temporary and permanent bracing is always required for stability and to prevent collapse with possible personal injury and property damage. For general guidance regarding the fabrication, storage, delivery, erection and bracing of trusses and truss systems, see **ANSI/TPI1 Quality Criteria, DSB-89 and BCSI Building Component Safety Information** available from Truss Plate Institute, 2670 Crain Highway, Suite 203 Waldorf, MD 20601



818 Soundside Road
 Edenton, NC 27932

Job	Truss	Truss Type	Qty	Ply	Lot 44 Happy Acres	E14945161
J0920-4404	F1	Floor	6	1		

Comtech, Inc., Fayetteville, NC - 28314,

8.330 s Jul 22 2020 MiTek Industries, Inc. Tue Oct 6 10:03:10 2020 Page 1
ID:YkaIB0L1uPsEIrXS89ZzOzv2un-U6Ne3d5pTemkX?bdO48Ykq5zfEykkaw7Qlhs_yWA7F

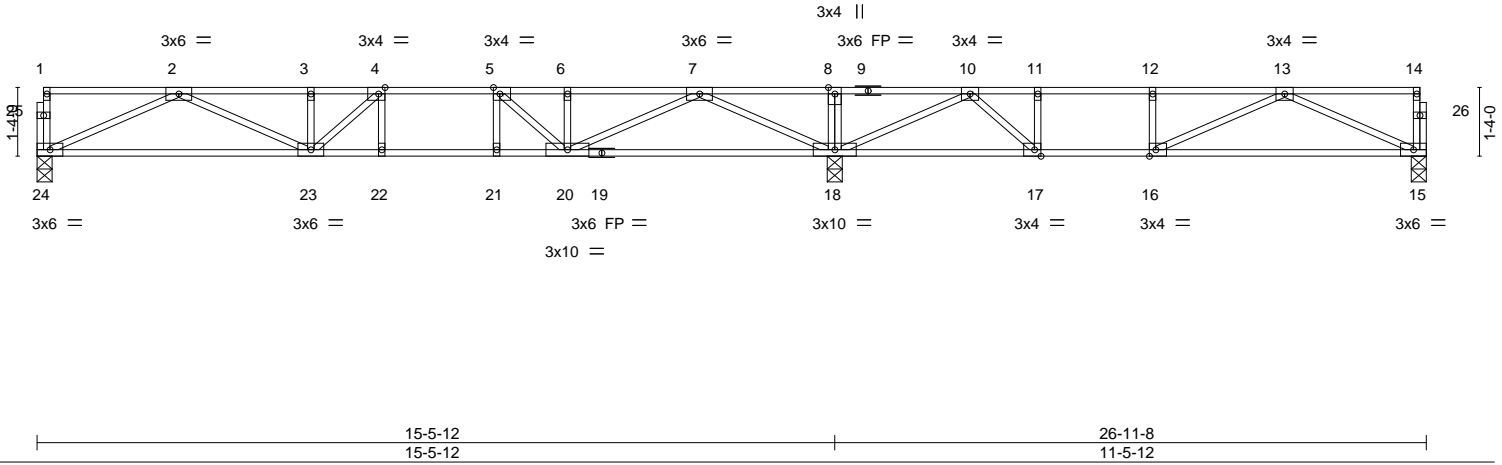


Plate Offsets (X,Y)-- [4:0-1-8,Edge], [5:0-1-8,Edge], [16:0-1-8,Edge], [17:0-1-8,Edge]

LOADING (psf)	SPACING-	CS.	DEFL.	in (loc)	l/defl	L/d	PLATES	GRIP
TCLL 40.0	Plate Grip DOL 1.00	TC 0.85	Vert(LL)	-0.19 15-16	>720	480	MT20	244/190
TCDL 10.0	Lumber DOL 1.00	BC 0.70	Vert(CT)	-0.30 15-16	>453	360		
BCLL 0.0	Rep Stress Incr YES	WB 0.55	Horz(CT)	0.05 15	n/a	n/a		
BCDL 5.0	Code IRC2015/TPI2014	Matrix-S					Weight: 134 lb	FT = 20%F, 11%E

LUMBER-
TOP CHORD 2x4 SP No.1 (flat)
BOT CHORD 2x4 SP No.1 (flat)
WEBS 2x4 SP No.3 (flat)

BRACING-
TOP CHORD Structural wood sheathing directly applied or 6-0-0 oc purlins, except end verticals.
BOT CHORD Rigid ceiling directly applied or 10-0-0 oc bracing, Except: 6-0-0 oc bracing: 17-18.

REACTIONS. (size) 24=0-3-8, 15=0-3-8, 18=0-3-8
Max Grav 24=800(LC 10), 15=597(LC 4), 18=1605(LC 1)

FORCES. (lb) - Max. Comp./Max. Ten. - All forces 250 (lb) or less except when shown.
TOP CHORD 2-3=-2278/0, 3-4=-2278/0, 4-5=-2400/0, 5-6=-2111/0, 6-7=-2111/0, 7-8=0/922, 8-10=0/922, 10-11=-1325/0, 11-12=-1325/0, 12-13=-1325/0
BOT CHORD 23-24=0/1475, 22-23=0/2400, 21-22=0/2400, 20-21=0/2400, 18-20=0/1149, 17-18=-261/922, 16-17=0/1325, 15-16=0/1030
WEBS 8-18=-301/0, 2-24=-1618/0, 2-23=0/887, 3-23=-251/18, 7-18=-1806/0, 7-20=0/1153, 4-23=-378/124, 5-20=-621/0, 13-15=-1129/0, 10-18=-1290/0, 13-16=-111/326, 10-17=0/761, 11-17=-409/0

- NOTES-**
- 1) Unbalanced floor live loads have been considered for this design.
 - 2) All plates are 1.5x3 MT20 unless otherwise indicated.
 - 3) Plates checked for a plus or minus 1 degree rotation about its center.
 - 4) Recommend 2x6 strongbacks, on edge, spaced at 10-0-0 oc and fastened to each truss with 3-10d (0.131" X 3") nails. Strongbacks to be attached to walls at their outer ends or restrained by other means.
 - 5) CAUTION, Do not erect truss backwards.



October 6, 2020

Job	Truss	Truss Type	Qty	Ply	Lot 44 Happy Acres	E14945162
J0920-4404	F2	Floor	2	1		

Comtech, Inc., Fayetteville, NC - 28314,

8.330 s Jul 22 2020 MiTek Industries, Inc. Tue Oct 6 10:03:11 2020 Page 1
 ID:YkalB0Lf1uPsElrXS89ZzOzv2un-y1x1Hy6SEyub99ApyofnUxMGo2aBTB54M4UEOQyWA7E



Scale = 1:44.4

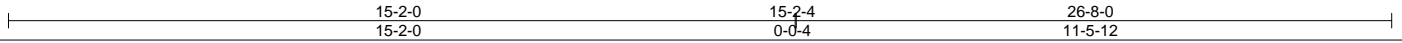
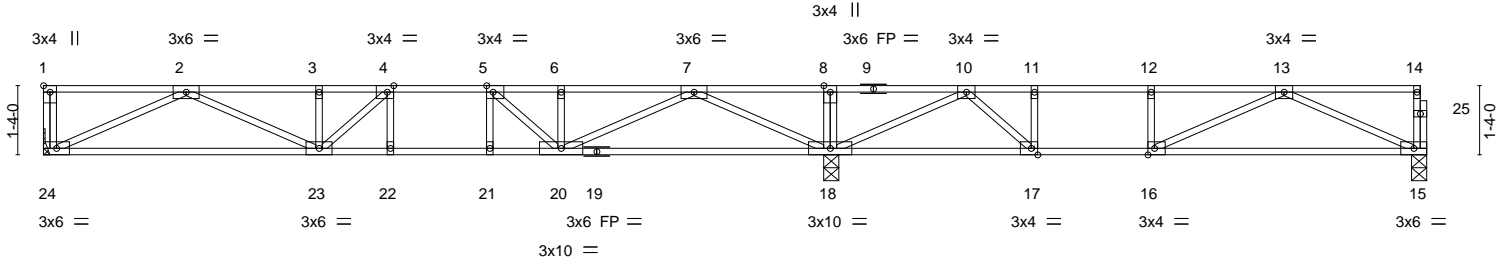


Plate Offsets (X,Y)-- [1:Edge,0-1-8], [4:0-1-8,Edge], [5:0-1-8,Edge], [16:0-1-8,Edge], [17:0-1-8,Edge]

LOADING (psf)	SPACING-	CSI.	DEFL.	in (loc)	l/defl	L/d	PLATES	GRIP
TCLL 40.0	Plate Grip DOL 1.00	TC 0.85	Vert(LL) -0.19	15-16	>724	480	MT20	244/190
TCDL 10.0	Lumber DOL 1.00	BC 0.64	Vert(CT) -0.30	15-16	>455	360		
BCLL 0.0	Rep Stress Incr YES	WB 0.53	Horz(CT) 0.05	15	n/a	n/a		
BCDL 5.0	Code IRC2015/TPI2014	Matrix-S						
							Weight: 134 lb	FT = 20%F, 11%E

LUMBER-	BRACING-
TOP CHORD 2x4 SP No.1 (flat)	TOP CHORD Structural wood sheathing directly applied or 6-0-0 oc purlins, except end verticals.
BOT CHORD 2x4 SP No.1 (flat)	BOT CHORD Rigid ceiling directly applied or 10-0-0 oc bracing, Except: 6-0-0 oc bracing: 17-18.
WEBS 2x4 SP No.3 (flat)	

REACTIONS. (size) 24=Mechanical, 18=0-3-8, 15=0-3-8
 Max Grav 24=791(LC 10), 18=1585(LC 1), 15=599(LC 4)

FORCES. (lb) - Max. Comp./Max. Ten. - All forces 250 (lb) or less except when shown.
 TOP CHORD 2-3=-2213/0, 3-4=-2213/0, 4-5=-2317/0, 5-6=-2066/0, 6-7=-2066/0, 7-8=0/915, 8-10=0/915, 10-11=-1335/0, 11-12=-1335/0, 12-13=-1335/0
 BOT CHORD 23-24=0/1444, 22-23=0/2317, 21-22=0/2317, 20-21=0/2317, 18-20=0/1142, 17-18=-245/931, 16-17=0/1335, 15-16=0/1035
 WEBS 8-18=-301/0, 2-24=-1590/0, 2-23=0/849, 7-18=-1767/0, 7-20=0/1119, 5-20=-568/0, 4-23=-347/148, 10-18=-1284/0, 13-15=-1133/0, 13-16=-103/332, 10-17=0/754, 11-17=-406/0

- NOTES-**
- 1) Unbalanced floor live loads have been considered for this design.
 - 2) All plates are 1.5x3 MT20 unless otherwise indicated.
 - 3) Plates checked for a plus or minus 1 degree rotation about its center.
 - 4) Refer to girder(s) for truss to truss connections.
 - 5) Recommend 2x6 strongbacks, on edge, spaced at 10-0-0 oc and fastened to each truss with 3-10d (0.131" X 3") nails. Strongbacks to be attached to walls at their outer ends or restrained by other means.
 - 6) CAUTION, Do not erect truss backwards.



October 6, 2020

Job	Truss	Truss Type	Qty	Ply	Lot 44 Happy Acres	E14945164
J0920-4404	F3	Floor	1	1		

Comtech, Inc., Fayetteville, NC - 28314,

8.330 s Jul 22 2020 MiTek Industries, Inc. Tue Oct 6 10:03:14 2020 Page 1
ID:YkaIB0Lf1uPsEIrXS89ZzOzv2un-Mtd9v_8KXtG90cvOdwDU6a_sAGeYgb8W22ju?lyWA7B



0-1-8

Scale = 1:18.9

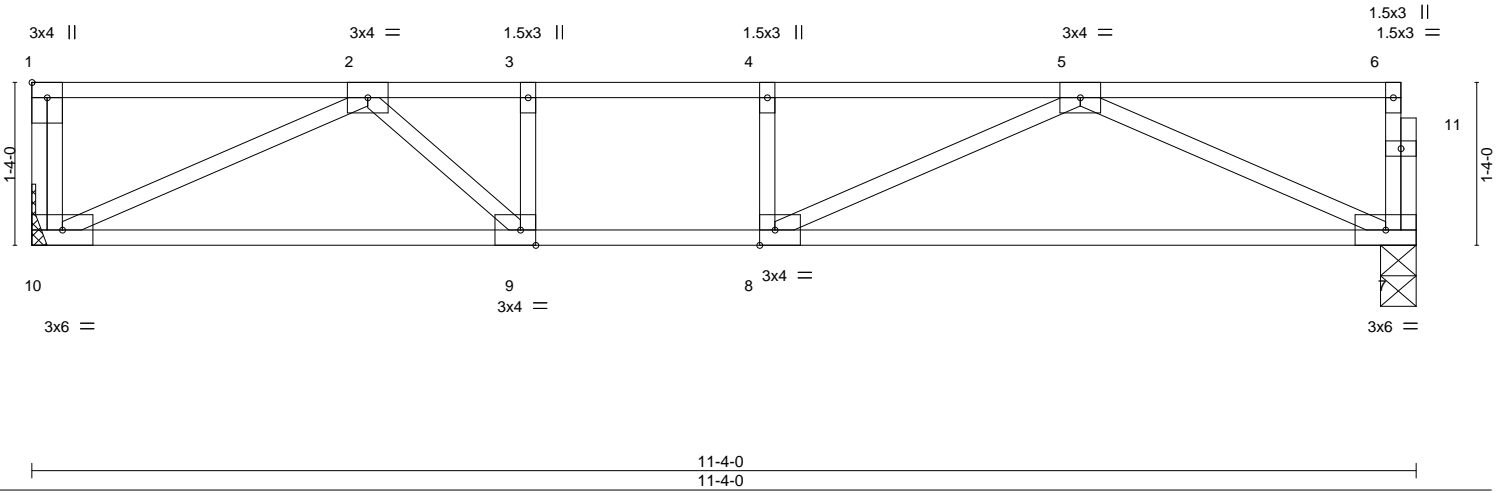


Plate Offsets (X,Y)-- [1:Edge,0-1-8], [8:0-1-8,Edge], [9:0-1-8,Edge]

LOADING (psf)	SPACING-	CSI.	DEFL.	in (loc)	l/defl	L/d	PLATES	GRIP
TCLL 40.0	Plate Grip DOL 1.00	TC 0.52	Vert(LL)	-0.14	7-8	>974	MT20	244/190
TCDL 10.0	Lumber DOL 1.00	BC 0.47	Vert(CT)	-0.22	7-8	>596		
BCLL 0.0	Rep Stress Incr YES	WB 0.32	Horz(CT)	0.02	7	n/a		
BCDL 5.0	Code IRC2015/TPI2014	Matrix-S					Weight: 58 lb	FT = 20%F, 11%E

LUMBER-
TOP CHORD 2x4 SP No.1 (flat)
BOT CHORD 2x4 SP No.1 (flat)
WEBS 2x4 SP No.3 (flat)

BRACING-
TOP CHORD Structural wood sheathing directly applied or 6-0-0 oc purlins, except end verticals.
BOT CHORD Rigid ceiling directly applied or 10-0-0 oc bracing.

REACTIONS. (size) 10=Mechanical, 7=0-3-8
Max Grav 10=610(LC 1), 7=603(LC 1)

FORCES. (lb) - Max. Comp./Max. Ten. - All forces 250 (lb) or less except when shown.
TOP CHORD 2-3=-1375/0, 3-4=-1375/0, 4-5=-1375/0
BOT CHORD 9-10=0/1055, 8-9=0/1375, 7-8=0/1046
WEBS 2-10=-1162/0, 5-7=-1146/0, 5-8=0/474, 2-9=0/558, 3-9=-293/0

- NOTES-**
- 1) Unbalanced floor live loads have been considered for this design.
 - 2) Plates checked for a plus or minus 1 degree rotation about its center.
 - 3) Refer to girder(s) for truss to truss connections.
 - 4) Recommend 2x6 strongbacks, on edge, spaced at 10-0-0 oc and fastened to each truss with 3-10d (0.131" X 3") nails. Strongbacks to be attached to walls at their outer ends or restrained by other means.
 - 5) CAUTION, Do not erect truss backwards.



October 6, 2020

WARNING - Verify design parameters and READ NOTES ON THIS AND INCLUDED MITEK REFERENCE PAGE MII-7473 rev. 5/19/2020 BEFORE USE.

Design valid for use only with MiTek® connectors. This design is based only upon parameters shown, and is for an individual building component, not a truss system. Before use, the building designer must verify the applicability of design parameters and properly incorporate this design into the overall building design. Bracing indicated is to prevent buckling of individual truss web and/or chord members only. Additional temporary and permanent bracing is always required for stability and to prevent collapse with possible personal injury and property damage. For general guidance regarding the fabrication, storage, delivery, erection and bracing of trusses and truss systems, see **ANSI/TPI1 Quality Criteria, DSB-89 and BCSI Building Component Safety Information** available from Truss Plate Institute, 2670 Crain Highway, Suite 203 Waldorf, MD 20601



818 Soundside Road
Edenton, NC 27932

Job	Truss	Truss Type	Qty	Ply	Lot 44 Happy Acres	E14945165
J0920-4404	F4	Floor	2	1		

Comtech, Inc., Fayetteville, NC - 28314,

8.330 s Jul 22 2020 MiTek Industries, Inc. Tue Oct 6 10:03:15 2020 Page 1
 ID:YkaIB0Lf1uPsElrXS89ZzOzv2un-q3BX7K9yIBO0emUbBekjfnX6Eg_bPwEfHiSRXByWA7A

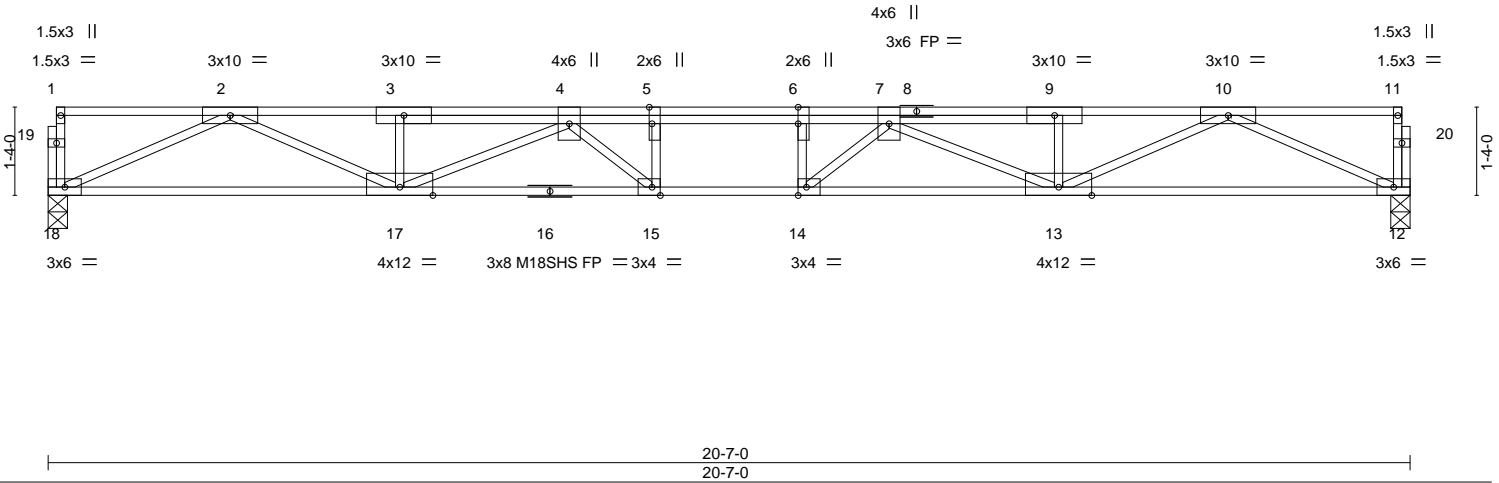
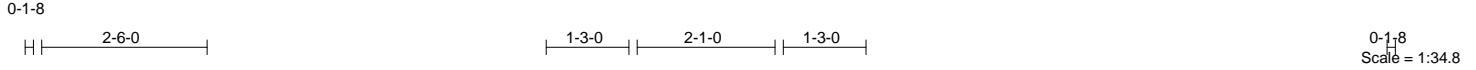


Plate Offsets (X,Y)-- [5:0-3-0,Edge], [6:0-3-0,0-0-0], [14:0-1-8,Edge], [15:0-1-8,Edge]

LOADING (psf)	SPACING-	2-0-0	CSI.	DEFL.	in (loc)	l/defl	L/d	PLATES	GRIP
TCLL 40.0	Plate Grip DOL	1.00	TC 0.24	Vert(LL)	-0.30 14-15	>823	480	MT20	244/190
TCDL 10.0	Lumber DOL	1.00	BC 0.48	Vert(CT)	-0.41 14-15	>599	360	M18SHS	244/190
BCLL 0.0	Rep Stress Incr	YES	WB 0.78	Horz(CT)	0.08 12	n/a	n/a		
BCDL 5.0	Code IRC2015/TPI2014		Matrix-S						
								Weight: 116 lb	FT = 20%F, 11%E

LUMBER-

TOP CHORD 2x4 SP 2400F 2.0E(flat)
 BOT CHORD 2x4 SP 2400F 2.0E(flat)
 WEBS 2x4 SP No.3(flat)

BRACING-

TOP CHORD Structural wood sheathing directly applied or 6-0-0 oc purlins, except end verticals.
 BOT CHORD Rigid ceiling directly applied or 10-0-0 oc bracing.

REACTIONS.

(size) 18=0-3-8, 12=0-3-8
 Max Grav 18=1112(LC 1), 12=1112(LC 1)

FORCES. (lb) - Max. Comp./Max. Ten. - All forces 250 (lb) or less except when shown.

TOP CHORD 2-3=-3625/0, 3-4=-3628/0, 4-5=-4893/0, 5-6=-4893/0, 6-7=-4893/0, 7-9=-3628/0, 9-10=-3627/0
 BOT CHORD 17-18=0/2146, 15-17=0/4631, 14-15=0/4893, 13-14=0/4649, 12-13=0/2146
 WEBS 2-18=-2357/0, 2-17=0/1635, 10-12=-2356/0, 10-13=0/1637, 7-13=-1120/0, 4-17=-1102/0, 4-15=-130/750, 7-14=-150/736, 6-14=-438/102, 5-15=-447/88

NOTES-

- Unbalanced floor live loads have been considered for this design.
- All plates are MT20 plates unless otherwise indicated.
- Plates checked for a plus or minus 1 degree rotation about its center.
- Recommend 2x6 strongbacks, on edge, spaced at 10-0-0 oc and fastened to each truss with 3-10d (0.131" X 3") nails. Strongbacks to be attached to walls at their outer ends or restrained by other means.



October 6, 2020

WARNING - Verify design parameters and READ NOTES ON THIS AND INCLUDED MITEK REFERENCE PAGE MII-7473 rev. 5/19/2020 BEFORE USE.

Design valid for use only with MiTek® connectors. This design is based only upon parameters shown, and is for an individual building component, not a truss system. Before use, the building designer must verify the applicability of design parameters and properly incorporate this design into the overall building design. Bracing indicated is to prevent buckling of individual truss web and/or chord members only. Additional temporary and permanent bracing is always required for stability and to prevent collapse with possible personal injury and property damage. For general guidance regarding the fabrication, storage, delivery, erection and bracing of trusses and truss systems, see **ANSI/TPI1 Quality Criteria, DSB-89 and BCSI Building Component Safety Information** available from Truss Plate Institute, 2670 Crain Highway, Suite 203 Waldorf, MD 20601



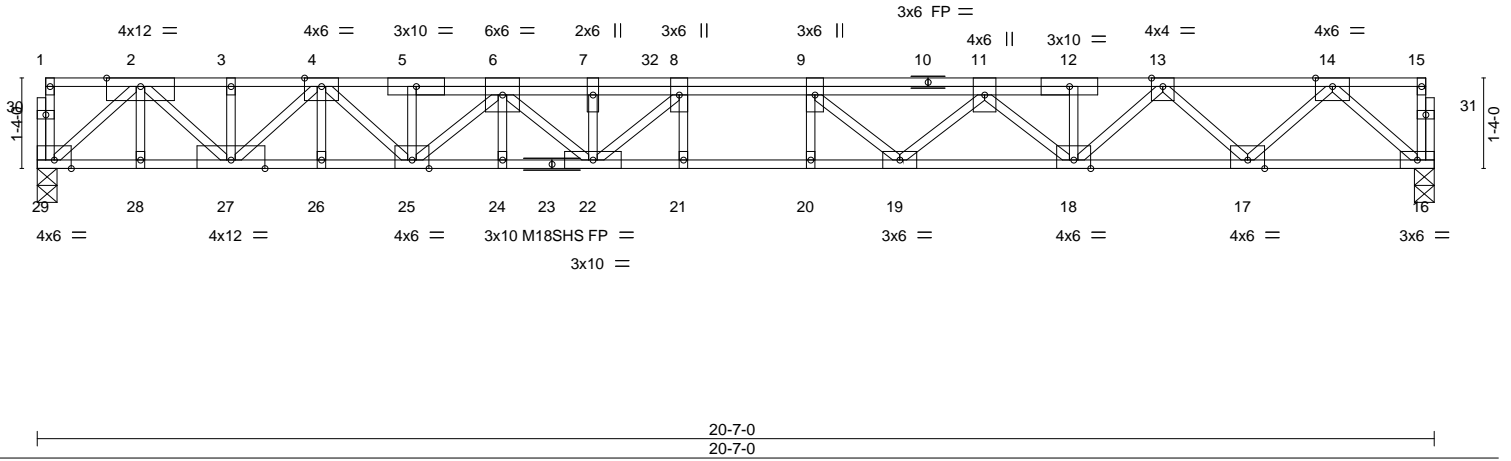
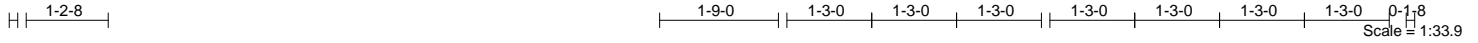
818 Soundside Road
 Edenton, NC 27932

Job	Truss	Truss Type	Qty	Ply	Lot 44 Happy Acres	E14945166
J0920-4404	F4A	Floor	1	1		

Comtech, Inc., Fayetteville, NC - 28314,

8.330 s Jul 22 2020 MiTek Industries, Inc. Tue Oct 6 10:03:18 2020 Page 1
ID:YkaIB0Lf1uPsEIrXS89ZzOzv2un-FesglMBrb6nbVDC9smHQHQ9antxucH86zgh68WyWA77

0-1-8



LOADING (psf)	SPACING-	CSI.	DEFL.	in (loc)	l/defl	L/d	PLATES	GRIP
TCLL 40.0	2-0-0 Plate Grip DOL 1.00	TC 0.35	Vert(LL) -0.34	21	>721	480	MT20	244/190
TCDL 10.0	Lumber DOL 1.00	BC 0.76	Vert(CT) -0.47	21	>518	360	M18SHS	244/190
BCLL 0.0	Rep Stress Incr NO	WB 0.77	Horz(CT) 0.09	16	n/a	n/a		
BCDL 5.0	Code IRC2015/TPI2014	Matrix-S						
							Weight: 128 lb	FT = 20%F, 11%E

LUMBER-

TOP CHORD 2x4 SP 2400F 2.0E(flat)
BOT CHORD 2x4 SP 2400F 2.0E(flat)
WEBS 2x4 SP No.3(flat)

BRACING-

TOP CHORD Structural wood sheathing directly applied or 6-0-0 oc purlins, except end verticals.
BOT CHORD Rigid ceiling directly applied or 10-0-0 oc bracing.

REACTIONS. (size) 29=0-3-8, 16=0-3-8
Max Grav 29=1311(LC 1), 16=1269(LC 1)

FORCES. (lb) - Max. Comp./Max. Ten. - All forces 250 (lb) or less except when shown.
TOP CHORD 2-3=-2637/0, 3-4=-2637/0, 4-5=-4560/0, 5-6=-4565/0, 6-7=-6181/0, 7-8=-6181/0, 8-9=-6253/0, 9-11=-5685/0, 11-12=-4249/0, 12-13=-4244/0, 13-14=-2423/0
BOT CHORD 28-29=0/1442, 27-28=0/1442, 26-27=0/3673, 25-26=0/3673, 24-25=0/5473, 22-24=0/5473, 21-22=0/6253, 20-21=0/6253, 19-20=0/6253, 18-19=0/5148, 17-18=0/3428, 16-17=0/1391
WEBS 2-29=-1903/0, 2-27=0/1613, 4-27=-1398/0, 4-25=0/1197, 6-25=-1204/0, 6-22=0/942, 7-22=-615/0, 8-22=-522/378, 14-16=-1849/0, 14-17=0/1436, 13-17=-1397/0, 13-18=0/1109, 11-18=-1201/0, 11-19=0/902, 9-19=-987/0

NOTES-

- Unbalanced floor live loads have been considered for this design.
- All plates are MT20 plates unless otherwise indicated.
- All plates are 1.5x3 MT20 unless otherwise indicated.
- Plates checked for a plus or minus 1 degree rotation about its center.
- Recommend 2x6 strongbacks, on edge, spaced at 10-0-0 oc and fastened to each truss with 3-10d (0.131" X 3") nails. Strongbacks to be attached to walls at their outer ends or restrained by other means.
- Hanger(s) or other connection device(s) shall be provided sufficient to support concentrated load(s) 412 lb down at 9-1-4 on top chord. The design/selection of such connection device(s) is the responsibility of others.
- In the LOAD CASE(S) section, loads applied to the face of the truss are noted as front (F) or back (B).

LOAD CASE(S) Standard

- Dead + Floor Live (balanced): Lumber Increase=1.00, Plate Increase=1.00
Uniform Loads (plf)
Vert: 16-29=-10, 1-15=-100
Concentrated Loads (lb)
Vert: 32=-355(B)



October 6, 2020

WARNING - Verify design parameters and READ NOTES ON THIS AND INCLUDED MITEK REFERENCE PAGE MII-7473 rev. 5/19/2020 BEFORE USE.

Design valid for use only with MiTek® connectors. This design is based only upon parameters shown, and is for an individual building component, not a truss system. Before use, the building designer must verify the applicability of design parameters and properly incorporate this design into the overall building design. Bracing indicated is to prevent buckling of individual truss web and/or chord members only. Additional temporary and permanent bracing is always required for stability and to prevent collapse with possible personal injury and property damage. For general guidance regarding the fabrication, storage, delivery, erection and bracing of trusses and truss systems, see **ANSI/TPI1 Quality Criteria, DSB-89 and BCSI Building Component Safety Information** available from Truss Plate Institute, 2670 Crain Highway, Suite 203 Waldorf, MD 20601



818 Soundside Road
Edenton, NC 27932

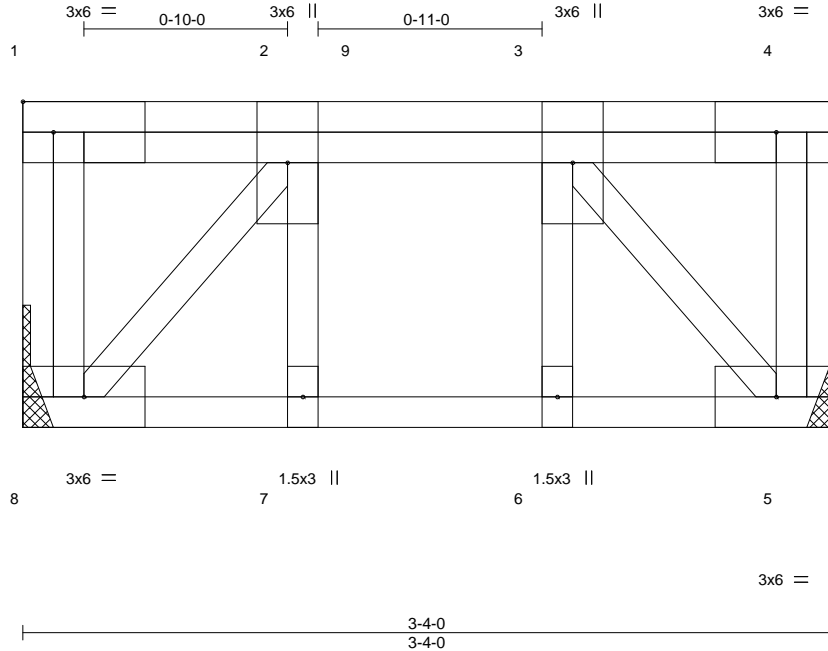
Job	Truss	Truss Type	Qty	Ply	Lot 44 Happy Acres	E14945167
J0920-4404	FG1	Floor Girder	1	1		

Comtech, Inc., Fayetteville, NC - 28314,

8.330 s Jul 22 2020 MiTek Industries, Inc. Tue Oct 6 10:03:19 2020 Page 1

ID:YkalB0L1tuPsElrXS89ZzOzv2un-jrQ2yhCTMPvS6NnMQTofpdioRHRDKvTFBKQfgzyWA76

Job Reference (optional)



Scale = 1:9.4

LOADING (psf)	SPACING-	CSI.	DEFL.	in (loc)	l/defl	L/d	PLATES	GRIP
TCLL 40.0	2-0-0	TC 0.17	Vert(LL) -0.00	7	>999	480	MT20	244/190
TCDL 10.0	Lumber DOL 1.00	BC 0.11	Vert(CT) -0.00	7	>999	360		
BCLL 0.0	Rep Stress Incr NO	WB 0.12	Horz(CT) 0.00	5	n/a	n/a		
BCDL 5.0	Code IRC2015/TPI2014	Matrix-S					Weight: 27 lb	FT = 20%F, 11%E

LUMBER-

TOP CHORD 2x4 SP No.1 (flat)
 BOT CHORD 2x4 SP No.1 (flat)
 WEBS 2x4 SP No.3 (flat)

BRACING-

TOP CHORD Structural wood sheathing directly applied or 3-4-0 oc purlins, except end verticals.
 BOT CHORD Rigid ceiling directly applied or 10-0-0 oc bracing.

REACTIONS. (size) 8=Mechanical, 5=Mechanical
 Max Grav 8=455(LC 1), 5=393(LC 1)

FORCES. (lb) - Max. Comp./Max. Ten. - All forces 250 (lb) or less except when shown.

TOP CHORD 2-3=-354/0
 BOT CHORD 7-8=0/354, 6-7=0/354, 5-6=0/354
 WEBS 2-8=-533/0, 3-5=-533/0

NOTES-

- 1) Unbalanced floor live loads have been considered for this design.
- 2) Plates checked for a plus or minus 1 degree rotation about its center.
- 3) Refer to girder(s) for truss to truss connections.
- 4) Recommend 2x6 strongbacks, on edge, spaced at 10-0-0 oc and fastened to each truss with 3-10d (0.131" X 3") nails. Strongbacks to be attached to walls at their outer ends or restrained by other means.
- 5) Hanger(s) or other connection device(s) shall be provided sufficient to support concentrated load(s) 536 lb down at 1-5-12 on top chord. The design/selection of such connection device(s) is the responsibility of others.
- 6) In the LOAD CASE(S) section, loads applied to the face of the truss are noted as front (F) or back (B).

LOAD CASE(S) Standard

- 1) Dead + Floor Live (balanced): Lumber Increase=1.00, Plate Increase=1.00
 Uniform Loads (plf)
 Vert: 5-8=-10, 1-4=-100
 Concentrated Loads (lb)
 Vert: 9=-510(F)



October 6, 2020

WARNING - Verify design parameters and READ NOTES ON THIS AND INCLUDED MITEK REFERENCE PAGE MII-7473 rev. 5/19/2020 BEFORE USE.

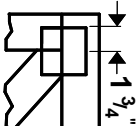
Design valid for use only with MiTek® connectors. This design is based only upon parameters shown, and is for an individual building component, not a truss system. Before use, the building designer must verify the applicability of design parameters and properly incorporate this design into the overall building design. Bracing indicated is to prevent buckling of individual truss web and/or chord members only. Additional temporary and permanent bracing is always required for stability and to prevent collapse with possible personal injury and property damage. For general guidance regarding the fabrication, storage, delivery, erection and bracing of trusses and truss systems, see **ANSI/TPI1 Quality Criteria, DSB-89 and BCSI Building Component Safety Information** available from Truss Plate Institute, 2670 Crain Highway, Suite 203 Waldorf, MD 20601



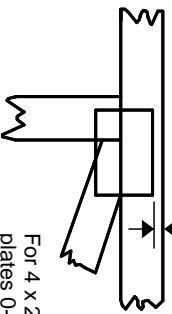
818 Soundside Road
 Edenton, NC 27932

Symbols

PLATE LOCATION AND ORIENTATION



Center plate on joint unless x, y offsets are indicated. Dimensions are in ft-in-sixteenths. Apply plates to both sides of truss and fully embed teeth.



For 4 x 2 orientation, locate plates 0- 1/16" from outside edge of truss.



This symbol indicates the required direction of slots in connector plates.

* Plate location details available in **MITek 20/20 software or upon request.**

PLATE SIZE

4 X 4

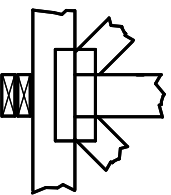
The first dimension is the plate width measured perpendicular to slots. Second dimension is the length parallel to slots.

LATERAL BRACING LOCATION



Indicated by symbol shown and/or by text in the bracing section of the output. Use T or I bracing if indicated.

BEARING



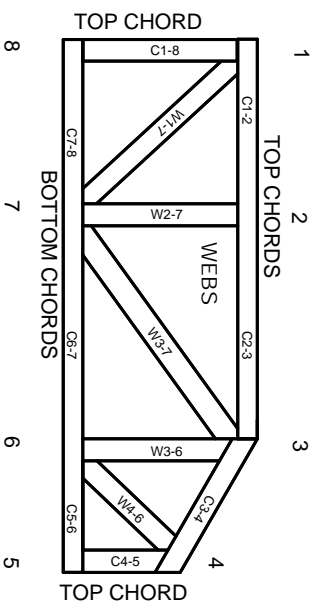
Indicates location where bearings (supports) occur. Icons vary but reaction section indicates joint number where bearings occur. Min size shown is for crushing only.

Industry Standards:

ANSI/TPI 1: National Design Specification for Metal Plate Connected Wood Truss Construction.
DSB-89: Design Standard for Bracing, Building Component Safety Information, Guide to Good Practice for Handling, Installing & Bracing of Metal Plate Connected Wood Trusses.

Numbering System

6-4-8
dimensions shown in ft-in-sixteenths
(Drawings not to scale)



JOINTS ARE GENERALLY NUMBERED/LETTERED CLOCKWISE AROUND THE TRUSS STARTING AT THE JOINT FARTHEST TO THE LEFT.

CHORDS AND WEBS ARE IDENTIFIED BY END JOINT NUMBERS/LETTERS.

PRODUCT CODE APPROVALS

ICC-ES Reports:

ESR-1311, ESR-1352, ESR1988
ER-3907, ESR-2362, ESR-1397, ESR-3282

Trusses are designed for wind loads in the plane of the truss unless otherwise shown.

Lumber design values are in accordance with ANSI/TPI 1 section 6.3 These truss designs rely on lumber values established by others.

© 2012 MITteK® All Rights Reserved



MITek Engineering Reference Sheet: Mill-7473 rev. 5/19/2020



General Safety Notes

Failure to Follow Could Cause Property Damage or Personal Injury

1. Additional stability bracing for truss system, e.g. diagonal or X-bracing, is always required. See BCSI.
2. Truss bracing must be designed by an engineer. For wide truss spacing, individual lateral braces themselves may require bracing, or alternative T or I bracing should be considered.
3. Never exceed the design loading shown and never stack materials on inadequately braced trusses.
4. Provide copies of this truss design to the building designer, erection supervisor, property owner and all other interested parties.
5. Cut members to bear tightly against each other.
6. Place plates on each face of truss at each joint and embed fully. Knots and wane at joint locations are regulated by ANSI/TPI 1.
7. Design assumes trusses will be suitably protected from the environment in accord with ANSI/TPI 1.
8. Unless otherwise noted, moisture content of lumber shall not exceed 19% at time of fabrication.
9. Unless expressly noted, this design is not applicable for use with fire retardant, preservative treated, or green lumber.
10. Camber is a non-structural consideration and is the responsibility of truss fabricator. General practice is to camber for dead load deflection.
11. Plate type, size, orientation and location dimensions indicated are minimum plating requirements.
12. Lumber used shall be of the species and size, and in all respects, equal to or better than that specified.
13. Top chords must be sheathed or purlins provided at spacing indicated on design.
14. Bottom chords require lateral bracing at 10 ft. spacing, or less, if no ceiling is installed, unless otherwise noted.
15. Connections not shown are the responsibility of others.
16. Do not cut or alter truss member or plate without prior approval of an engineer.
17. Install and load vertically unless indicated otherwise.
18. Use of green or treated lumber may pose unacceptable environmental, health or performance risks. Consult with project engineer before use.
19. Review all portions of this design (front, back, words and pictures) before use. Reviewing pictures alone is not sufficient.
20. Design assumes manufacture in accordance with ANSI/TPI 1 Quality Criteria.
21. The design does not take into account any dynamic or other loads other than those expressly stated.