

DEED REFERENCE:

Deed Book 3750, Page 686
Map # 2019-220

ZONED: RA-30


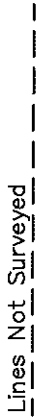

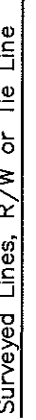

MINIMUM SETBACK REQUIREMENT

Front -----35'
Side -----10'
Rear -----25'
Corner -----20'

LEGEND:

FIP..... Found Iron Pipe
CP Computed Point
* Control Corner
FRB..... Found Rebar

LINE LEGEND:

Subject Tract Surveyed 
Lines Not Surveyed 
Setback Line 
Surveyed Lines, R/W or Tie Line 
Not to Scale 

DRAWN BY:

J. SCOTT WALKER, PLS
835 ABATTOIR RD, COATS NC 27521
(910) 897-5753

This is Not to Be Considered
a Certified Document



Map # 2019-220

**SITE PLAN FOR:
RP WELLONS LAND &
DEVELOPMENT, LLC**

P.O. Box 730, Dunn NC 28334

FOR

KIM BREEDEN & FERGIE ROPER
AVERASBORO TWP HARNETT CO NC

AUGUST 28, 2020

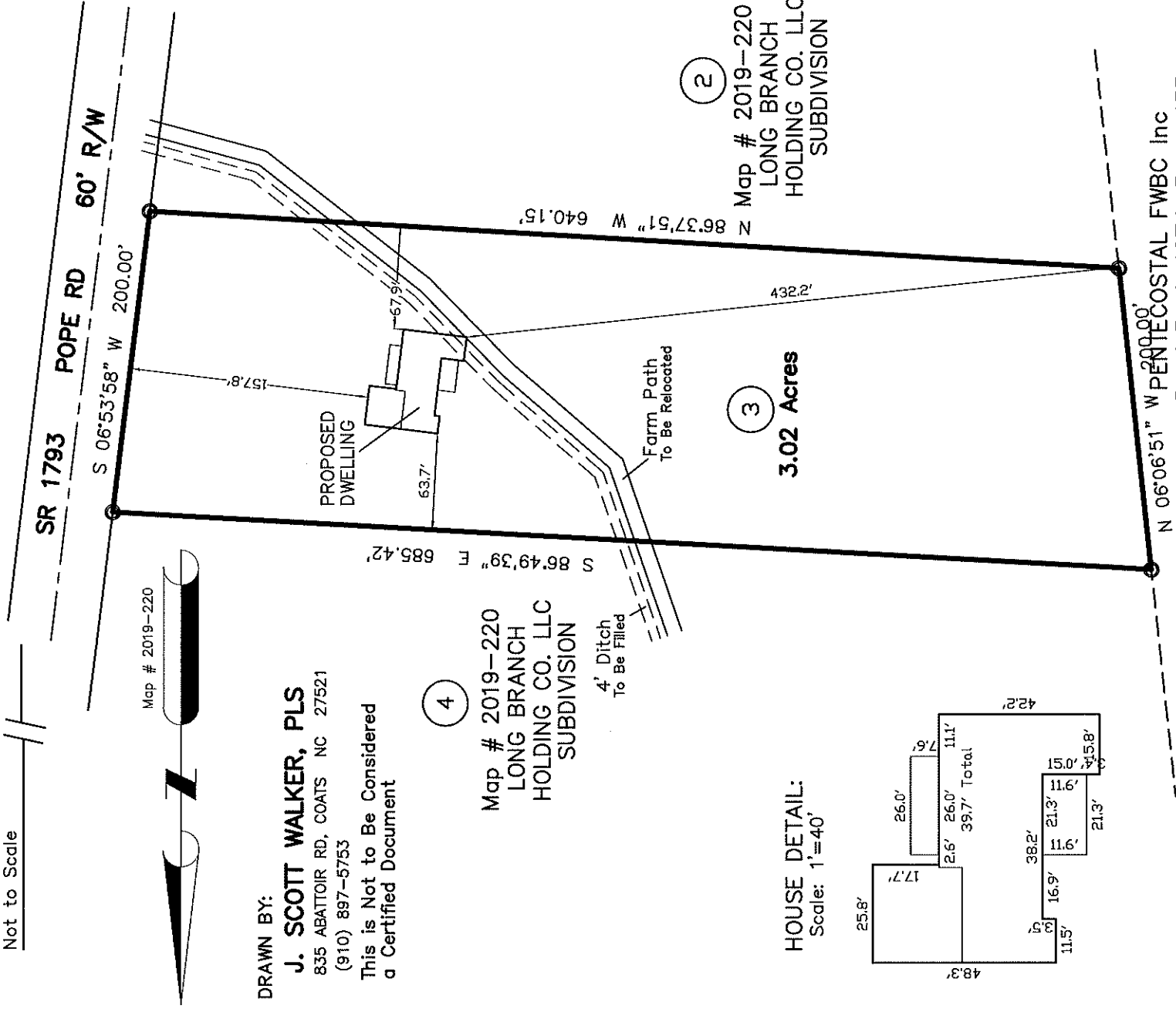


1" = 100'

PIN: 151-83-5363.000 PID: 02151612140013 10

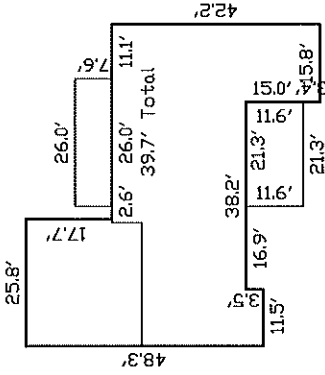
PRELIMINARY

Not For Sales, Conveyances, or Recordation



HOUSE DETAIL:

Scale: 1"=40'



Map # 2019-220
LONG BRANCH
HOLDING CO. LLC
SUBDIVISION

Map # 2019-220
LONG BRANCH
HOLDING CO. LLC
SUBDIVISION

Map # 2019-220
LONG BRANCH
HOLDING CO. LLC
SUBDIVISION