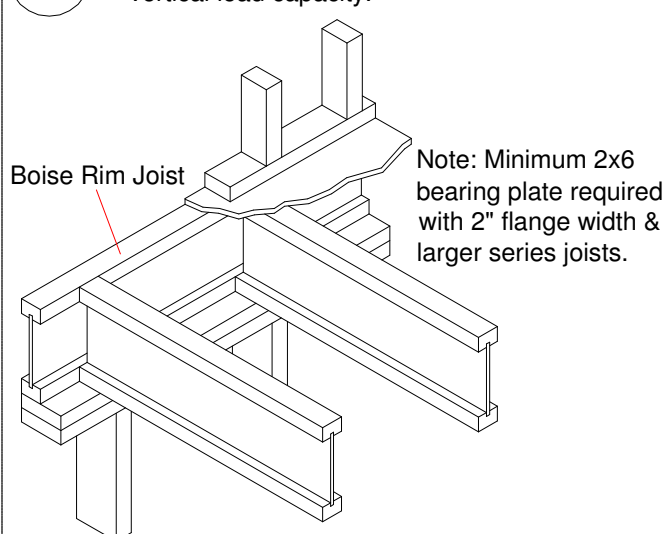
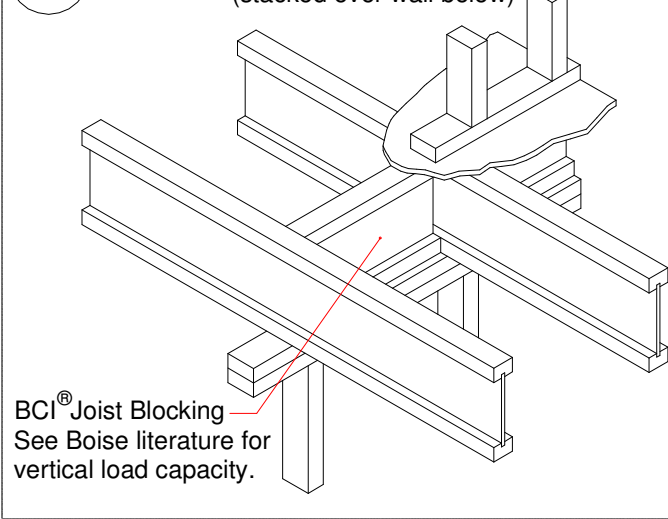


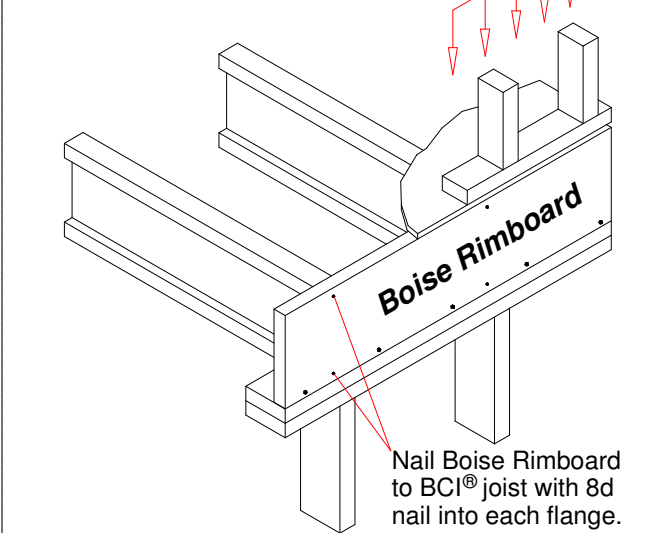
F02 See Boise literature for joist vertical load capacity.



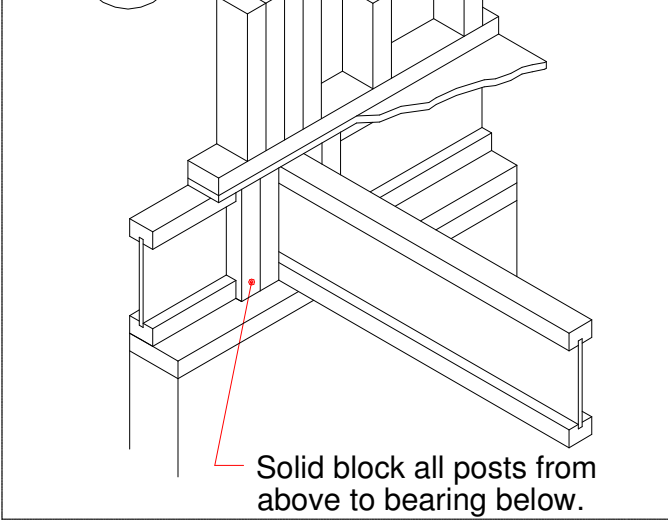
F06 Load bearing wall above (stacked over wall below)



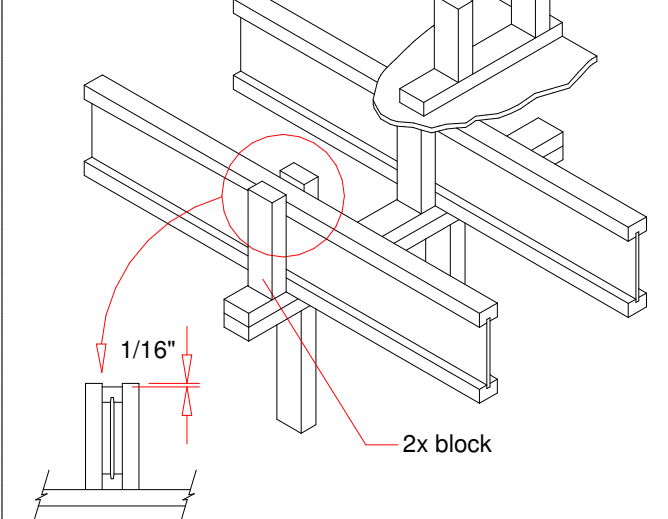
F07 See Boise literature for vertical load capacity.



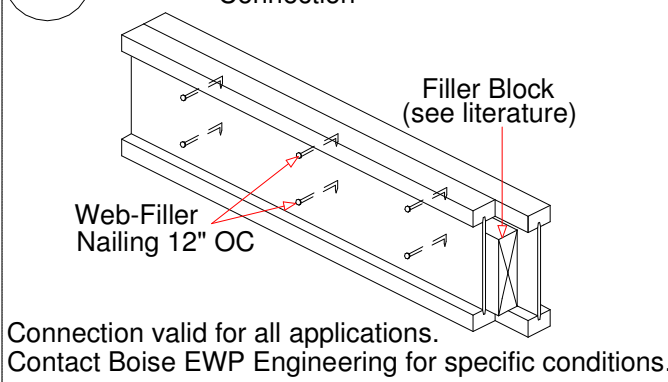
F08



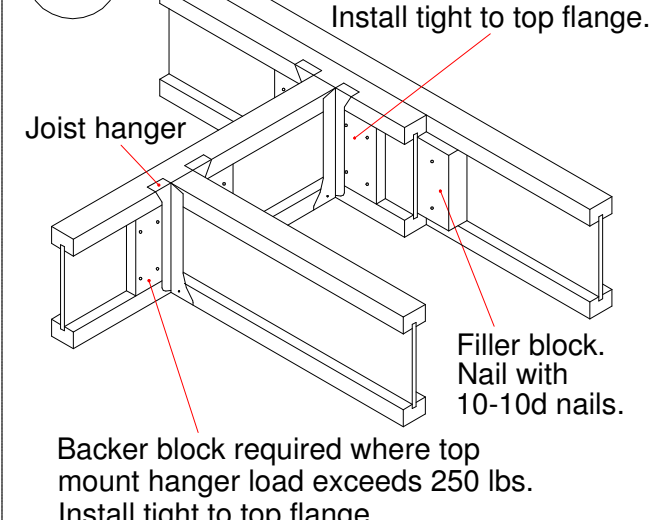
F09 Load bearing wall above (stacked over wall below)



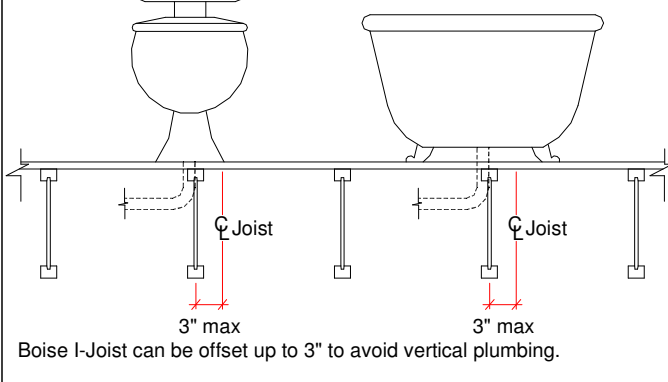
F58 Double BCI Joist Connection



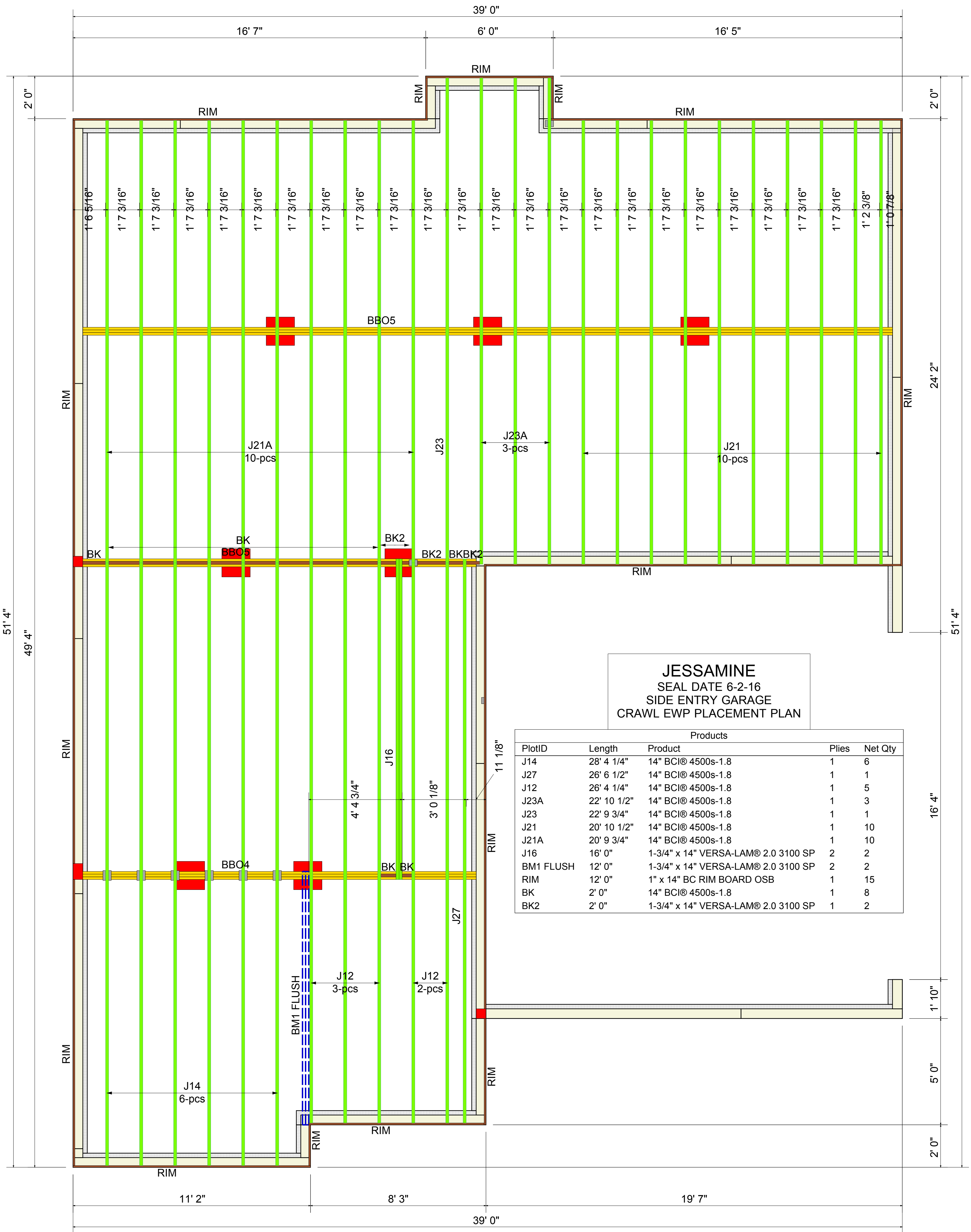
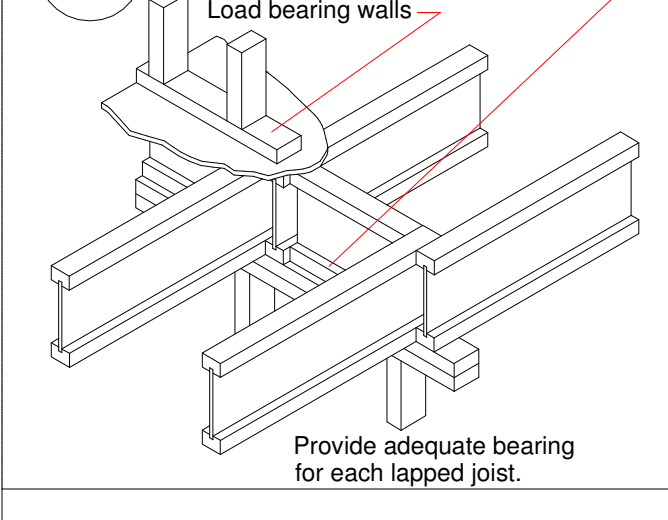
F10 Backer block (12" wide min.) Nail with 10-10d nails. Install tight to top flange.



OJ-A Note: Sheathing shall not span greater than rating



F13-F Boise Joist Blocking Use 3" (10d) nails at 6" o.c.



JESSAMINE
SEAL DATE 6-2-16
SIDE ENTRY GARAGE
CRAWL EWP PLACEMENT PLAN

PlotID	Length	Product	Products	
			Plies	Net Qty
J14	28' 4 1/4"	14" BCI@ 4500s-1.8	1	6
J27	26' 6 1/2"	14" BCI@ 4500s-1.8	1	1
J12	26' 4 1/4"	14" BCI@ 4500s-1.8	1	5
J23A	22' 10 1/2"	14" BCI@ 4500s-1.8	1	3
J23	22' 9 3/4"	14" BCI@ 4500s-1.8	1	1
J21	20' 10 1/2"	14" BCI@ 4500s-1.8	1	10
J21A	20' 9 3/4"	14" BCI@ 4500s-1.8	1	10
J16	16' 0"	1-3/4" x 14" VERSA-LAM® 2.0 3100 SP	2	2
BM1 FLUSH	12' 0"	1-3/4" x 14" VERSA-LAM® 2.0 3100 SP	2	2
RIM	12' 0"	1" x 14" BC RIM BOARD OSB	1	15
BK	2' 0"	14" BCI@ 4500s-1.8	1	8
BK2	2' 0"	1-3/4" x 14" VERSA-LAM® 2.0 3100 SP	1	2

MINIMUM DESIGN DATA
LIVE LOAD 40 PSF
DEAD LOAD 10 PSF
TOTAL LOAD 50 PSF
DOL = 100%

DEFLECTION CRITERIA
L/480 (MINIMUM)

ARCHITECTURAL PLAN DATE
5-31-16

SEALED PLAN DATE
6-2-16

Sheet
1 of 1

- GENERAL NOTES:**
- 1.) READ THE INSTALLATION GUIDE BEFORE FRAMING.
 - 2.) ALL WALLS SHOWN ARE LOAD BEARING UNLESS NOTED OTHERWISE. WALLS NOT SHOWN ARE CONSIDERED NON-LOAD BEARING.
 - 3.) UNLESS STATED OTHERWISE ALL CEILING & ROOF LOADS BRACE DIRECTLY TO LOAD BEARING WALLS SUPPORTED BY FOUNDATION.
 - 4.) CONTACT BUILDERS FIRSTSOURCE BEFORE MAKING ANY ALTERATIONS OR ADJUSTMENTS...FAILURE TO DO SO MAY RESULT IN COSTLY REPAIRS.

H & H HOMES
JESSAMINE - MASTER
CRAWL EWP PLACEMENT PLAN
Builders FirstSource, Central Carolina Markets
DRAWN BY: LEE ATKINS DATE: 10-19-17

This layout and associated materials list has been prepared based on project plans and/or information provided to Builders FirstSource (BFS). It remains the responsibility of the builder, architect, designer, or other responsible persons to review this information to assure that it is appropriate, accurate, complete and complies with applicable building codes.

www.bldr.com
1135 ROBESON STREET
FAYETTEVILLE, NC 28305
V (910) 485-1111
7601 BOEING DRIVE
GREENSBORO, NC 27409
V (336) 884-5454
3189 NC HIGHWAY5
ABERDEEN NC 28315
V (910) 944-2516

