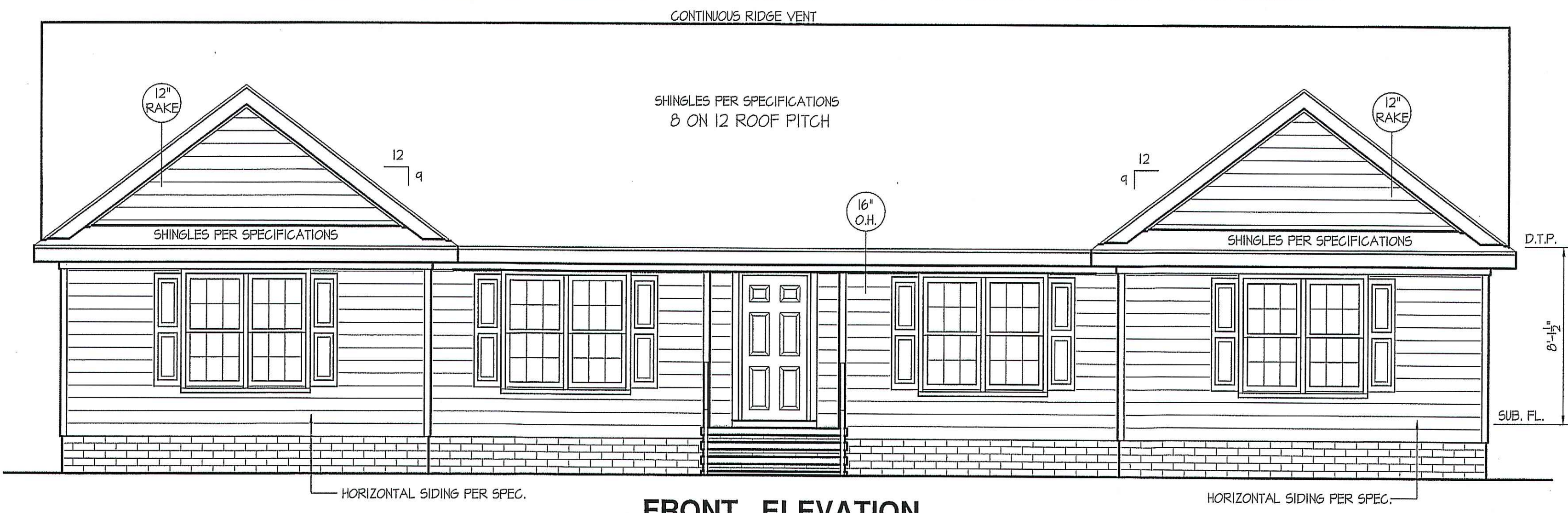
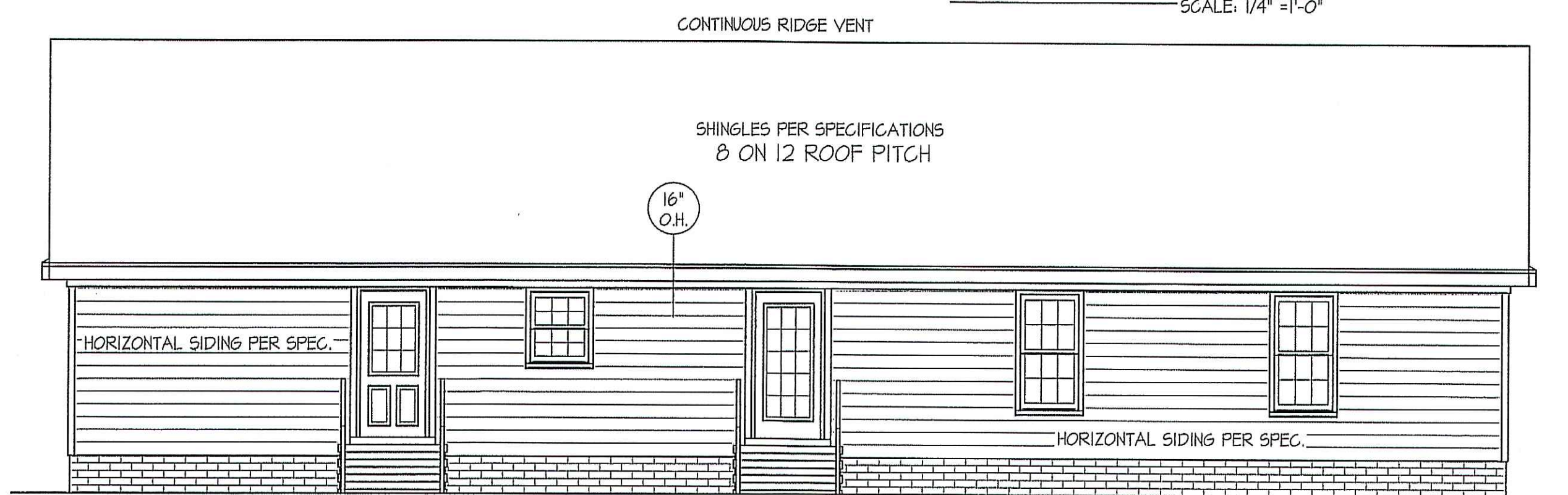


THIS PLAN IS DESIGNED TO MEET THE REQUIREMENTS OF THE NORTH CAROLINA RESIDENTIAL CODE 2018 EDITION



FRONT ELEVATION
 SCALE: 1/4" = 1'-0"



REAR ELEVATION
 SCALE: 3/16" = 1'-0"

INSULATION and FENESTRATION REQUIREMENTS

CLIMATE ZONE	ZONE-3	ZONE-4
FENESTRATION U-FACTOR	0.35	0.35
GLAZED FENESTRATION SHGC	0.30	0.30
MINIMUM CEILING R-VALUE	R-38	R-38
MINIMUM WALL R-VALUE	R-15, 13+2.5	R-15, 13+2.5
MINIMUM FLOOR R-VALUE	R-19	R-19
MIN. CRAWL SPACE WALL R-VALUE	5/8	10/15
MIN. SLAB R-VALUE	0	R-10

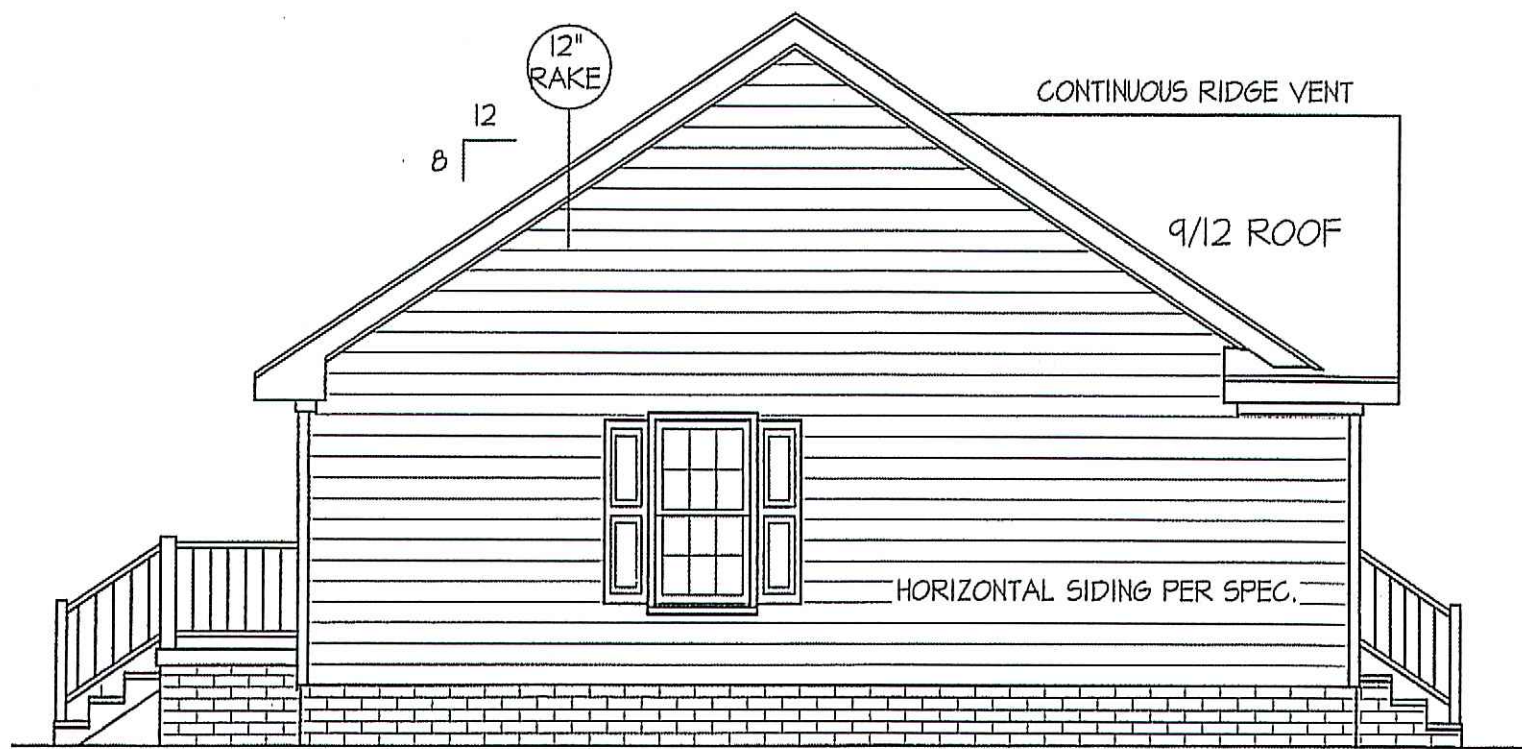
PROVIDE STEPS AS REQUIRED
 GRADE MAY VARY - BUILDER TO VERIFY

ROOF VENTILATION REQ'MTS.
 1904 ATTIC SQ. FT. / 300 = 6.35
 PROVIDED ON PLAN
 84 L.F. RIDGE VENT = 15.75
 99 L.F. SOFFIT VENT = 6.18
 TOTAL = 21.93 S.F. FREE NET AREA

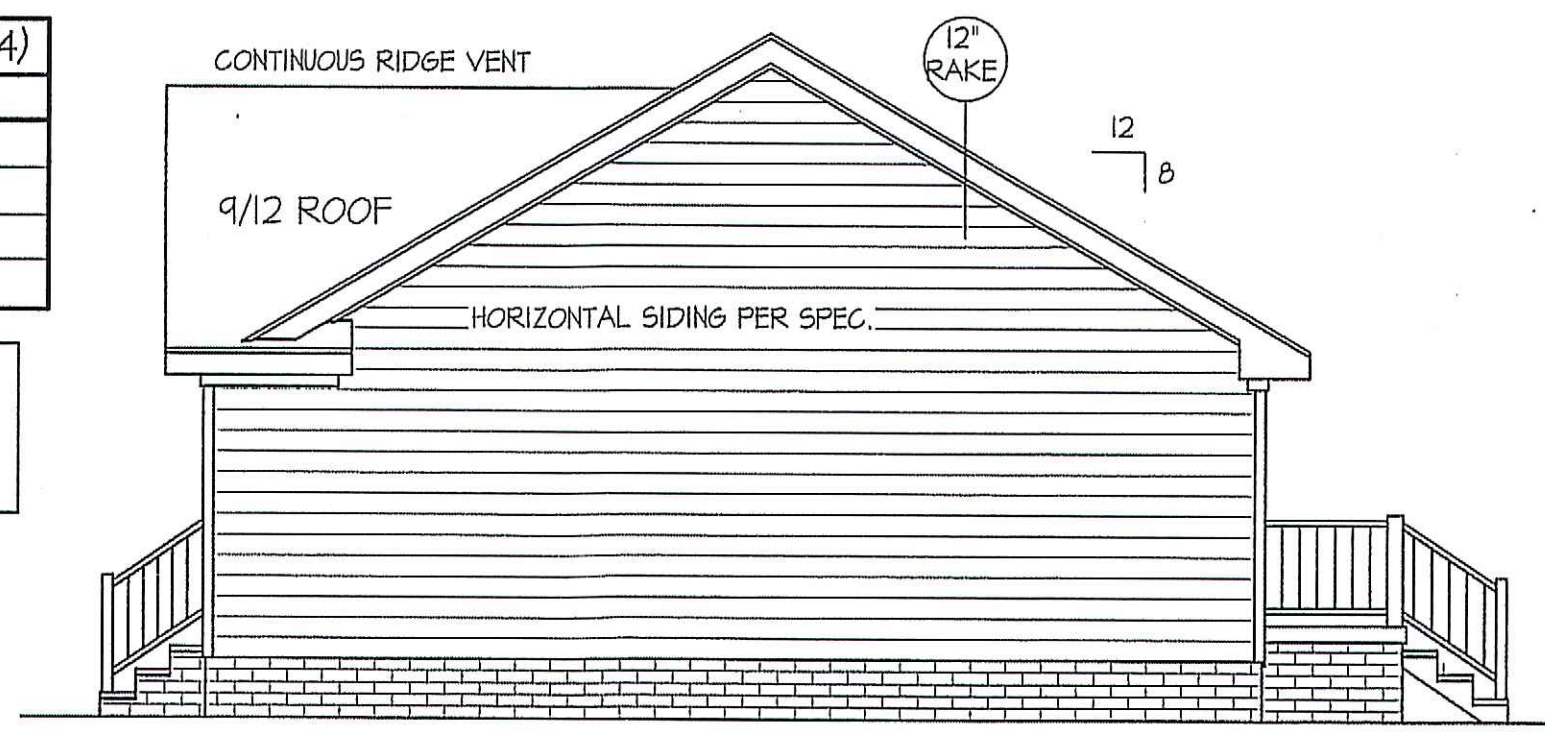
WIND ZONES (PER TABLE R301.2(4))

COUNTY	MPH
HARNETT	120
JOHNSTON	120
SAMPSON	130
WAKE	115

ALL EXTERIOR WALLS TO BE SHEATHED WITH CS-WSP (7/16" OSB) IN ACCORDANCE WITH SECTION R602.10.3 UNLESS OTHERWISE NOTED.



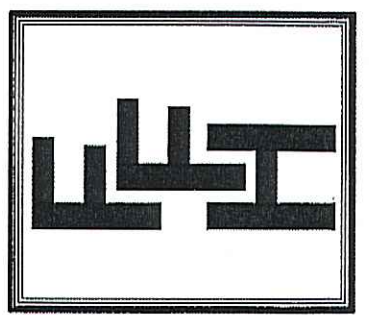
LEFT ELEVATION
 SCALE: 3/16" = 1'-0"



RIGHT ELEVATION
 SCALE: 3/16" = 1'-0"

DATE:
 JUNE-2020

FREEDOM FAMILY HOMES
 P.O. BOX 608
 DUNN, N.C. - 28335
 O: (910) 892-1231 FAX: (910) 892-5680
 © 2020, FREEDOM FAMILY HOMES



EXCLUSIVE PLAN FOR
 FREEDOM FAMILY HOMES
 PLANTATION ~ PRICHARD
 w/out GARAGE

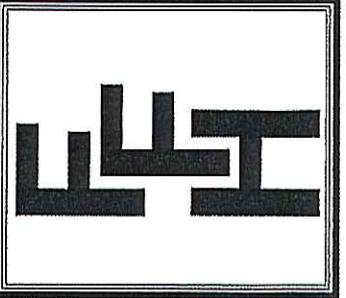
SHEET NO.
1

CP JP

COMPUTER FILE: FREEDOM FAMILY HOMES - PLANTATION-2020 W/O GARAGE - JUNE-2020

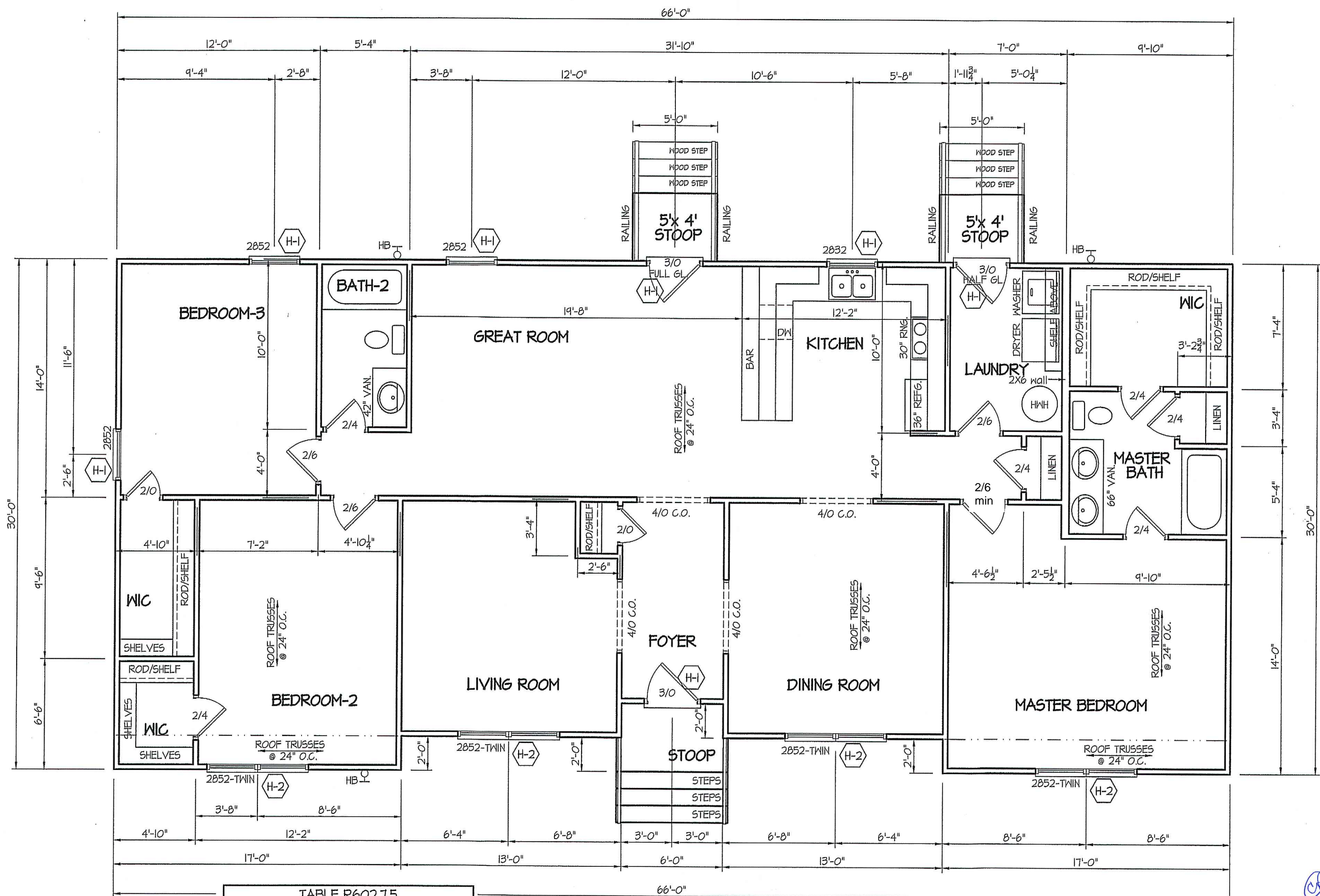
DATE:
JUNE-2020

FREEDOM FAMILY HOMES
P.O. BOX 608
DUNN, N.C. - 28335
O: (910) 892-1231 FAX: (910) 892-5680
© 2020, FREEDOM FAMILY HOMES



**EXCLUSIVE PLAN FOR
FREEDOM FAMILY HOMES
PLANTATION~PRICHARD
w/out GARAGE**

PLAN:
SHEET NO.
2



WIND ZONES (PER TABLE R301.2(4))

COUNTY	MPH
HARNETT	120
JOHNSTON	120
SAMPSON	130
WAKE	115

TABLE R602.1.5
MINIMUM NUMBER OF FULL HEIGHT STUDS AT EACH END OF HEADERS IN EXTERIOR WALLS

HEADER SPAN (feet)	MAX. STUD SPACING (inches) [per Table R602.3(5)]	
	16	24
< 3'	1	1
4'	2	1
8'	3	2
12'	5	3
16'	6	4

ALL INTERIOR AND EXTERIOR LOAD BEARING HEADERS WILL BE 2X10 #2 SPF UNLESS OTHERWISE NOTED.

ALL EXTERIOR WALLS TO BE SHEATHED WITH CS-WSP (1/16" OSB) IN ACCORDANCE WITH SECTION R602.10.3 UNLESS OTHERWISE NOTED.

GIRDER AND HEADER SIZES AND JACK STUD REQUIREMENTS ON EXTERIOR AND INTERIOR LOAD BEARING WALLS ARE TO COINCIDE WITH TABLE EXT.~R602.7 (1) AND INT.~R602.7 (2).

FLOOR PLAN

SCALE: 1/4" = 1'-0"

1904 HEATED SQUARE FOOTAGE

HEADER SCHEDULE

SYMBOL #	SIZE	JACKS
H-1	(2) 2x10	1
H-2	(2) 2x10	2
H-3	(2) 2x8	2
H-4	(2) 2x12	2
H-5	(2) 1.75 x 9.25 LVL	3

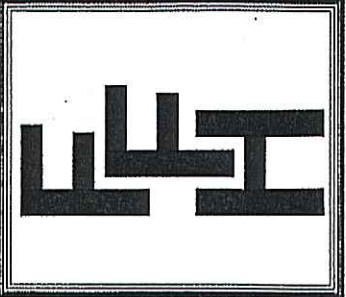
COMPUTER FILE: FREEDOM FAMILY HOMES - PLANTATION-2020 W/O GARAGE - JUNE-2020

FOUNDATION DRAINAGE
 A DRAINAGE SYSTEM IS NOT REQUIRED WHEN THE FOUNDATION IS INSTALLED ON WELL-DRAINED GROUND OR SAND-GRAVEL MIXTURE SOILS ACCORDING TO THE UNIFIED SOIL CLASSIFICATION SYSTEM, GROUP I SOILS, AS DETAILED IN TABLE R405.1

FOUNDATION VENTILATION INFORMATION
 (MIN. NET AREA OF VENT. REQ'D. = 1/150)
 1904 S.F. (CRAWL) x .96 = 1827.84 S.I.
 USE 29" WITTEN AUTO. VENT" FND. VENTS @ 65 S.I. FREE NET AREA or EQUIVALENT.
 (MIN. NET AREA CAN BE REDUCED TO 1/1500)
 1904 S.F. (CRAWL) x .096 = 182.784 S.I.
 USE 3" WITTEN AUTO. VENT" FND. VENTS @ 65 S.I. FREE NET AREA or EQUIVALENT.
 W/ APPROVED 6-mil POLYETHYLENE VAPOR RETARDER or EQUIVALENT IN CRAWL SPACE.
 REQUIRED VENTS ARE TO BE PLACED SO AS TO PROVIDE CROSS-VENTILATION OF THE CRAWL SPACE.

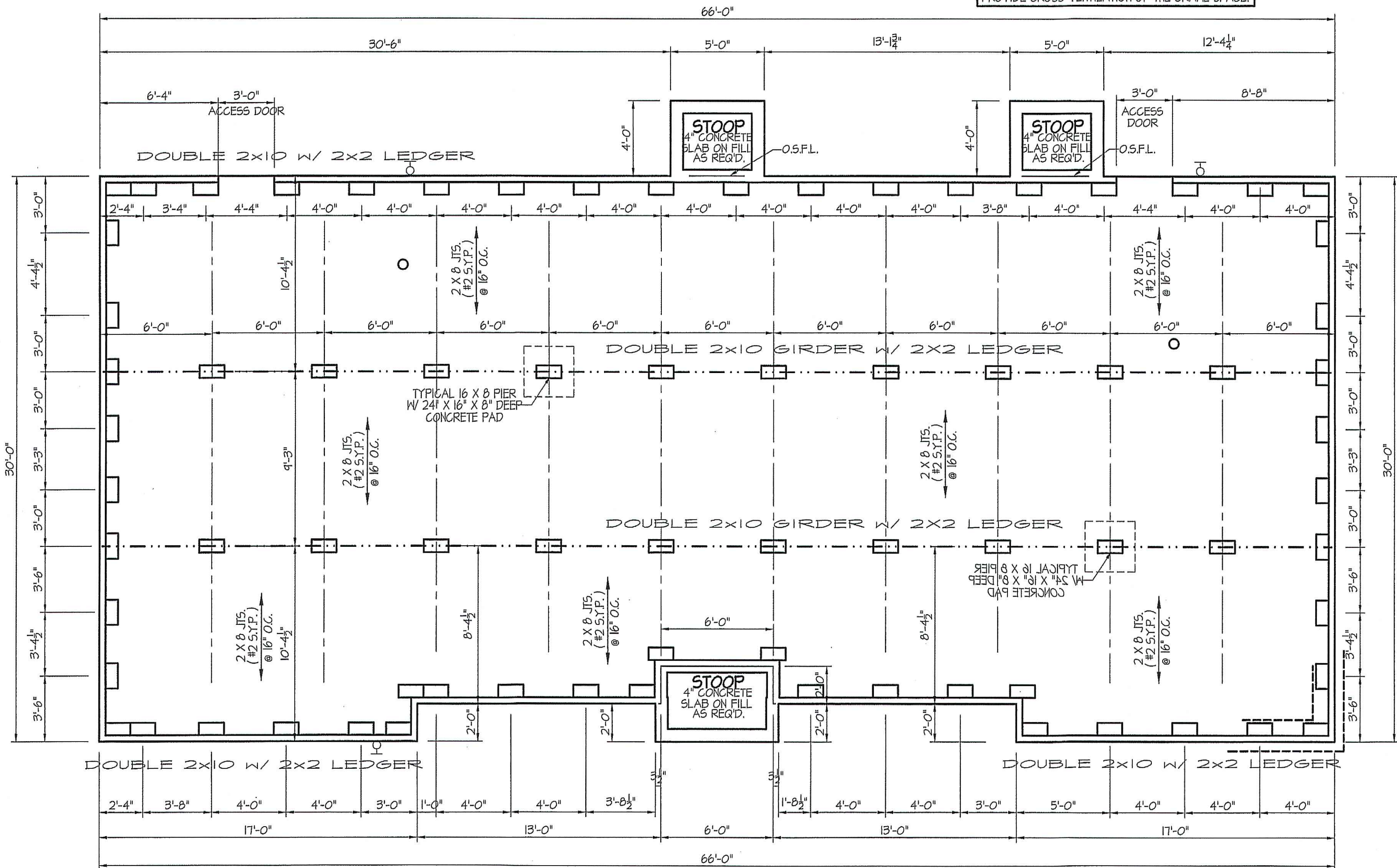
DATE:
 JUNE-2020

FREEDOM FAMILY HOMES
 P.O. BOX 608
 DUNN, N.C. - 28335
 O: (910) 892-1231 FAX: (910) 892-5680
 © 2020, FREEDOM FAMILY HOMES



EXCLUSIVE PLAN FOR
FREEDOM FAMILY HOMES
PLANTATION~PRICHARD
 w/out GARAGE

SHEET NO.
3



FOUNDATION ANCHORAGE
 THE WOOD SOLE PLATE AT EXTERIOR WALLS ON MONOLITHIC SLABS AND WOOD SILL PLATE SHALL BE ANCHORED TO THE FOUNDATION WITH ANCHOR BOLTS SPACED A MAXIMUM OF 4 FEET (1219.3 mm) ON CENTER AND NOT MORE THAN 12 INCHES (305 mm) FROM THE CORNER.
 BOLTS SHALL BE AT LEAST 1/2 INCH (12.7 mm) IN DIAMETER AND SHALL EXTEND A MINIMUM OF 15 INCHES (178 mm) INTO MASONRY OR CONCRETE.

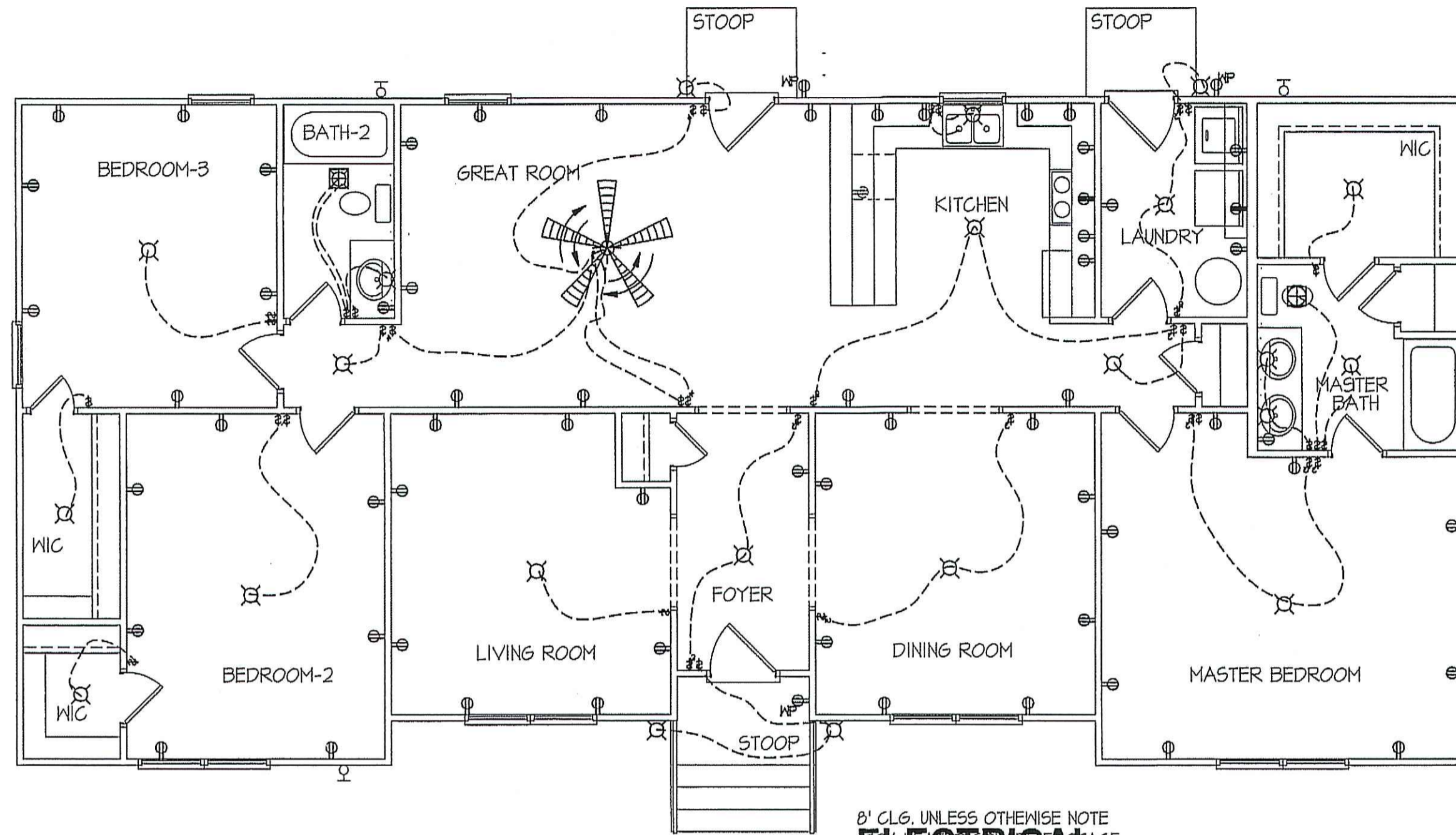
NOTES:
 USE DBL. 2x10 BANDS w/2X2 LEDGER ON 4" WALLS
 USE DOUBLE 2x10 GIRDERS w/ 2X2 LEDGERS
 USE 2x8 JOISTS AT 16" O.C., ADD 56L. JOIST UNDER PARALLEL INTERIOR WALLS AS REQ'D.
 PROVIDE 24 X 36 ACCESS OPENING IN FND. WALL.
 PROVIDE STEPS TO GRADE (MAX. 8")

PIER and CURTAIN FND.
FOUNDATION PLAN
 SCALE: 1/4" = 1'-0"
 ALL JOISTS AND GIRDERS WILL BE #2 S.Y.P.
 JOIST SPANS TO COINCIDE WITH REVISED TABLES R502.3.1(1) and R502.3.1(2) FROM 2018 NCR CODES
 GIRDER SPANS AND HEADER SPANS TO COINCIDE WITH TABLE R602.7(1), R602.7(2) AND R602.7(3).

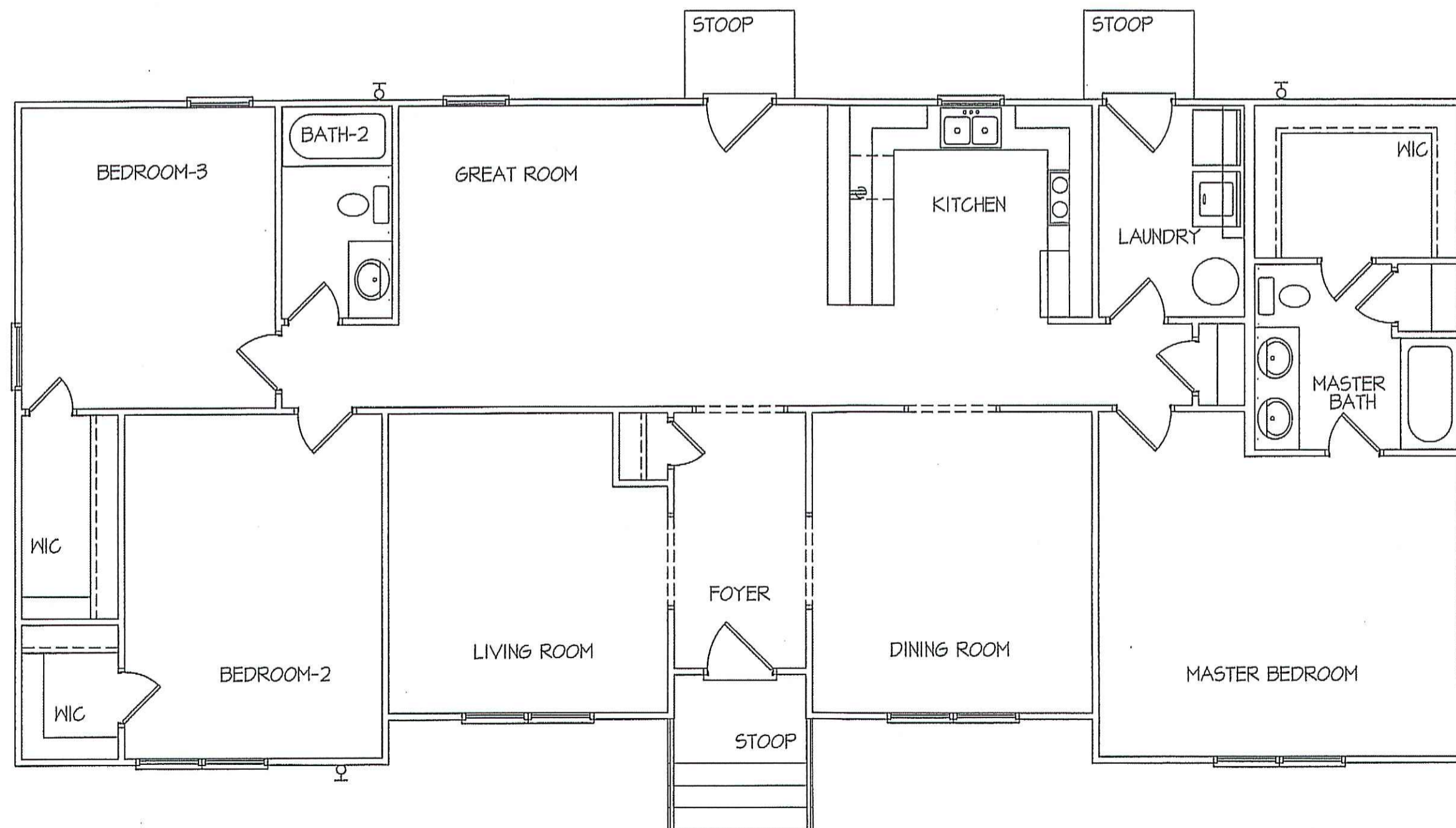
VP
 29

COMPUTER FILE: FREEDOM FAMILY HOMES - PLANTATION-2020 W/O GARAGE - JUNE-2020

ELECTRICAL LEGEND		
PROVIDE BURGLAR/SMOKE AND FIRE DETECTORS AS PER MANUFACTURER'S SPECIFICATIONS.		
PROVIDE CENTRAL VACUUM SYSTEM AS PER MANUFACTURER'S SPECIFICATIONS.		
ALL FANS ARE TO BE CONTROLLED BY VAR/SPEED AND DIRECTIONAL SWITCHES		
⊕ SURF. MOUNTED LIGHT	⊕ TYPICAL WALL RECEP.	⊕ TYPICAL SWITCH
○ RECESSED LIGHT	⊕ TOP 1/2 HOT W/SWITCH	⊕ 3-WAY SWITCH
○ EYEBALL LIGHT	⊕ CEILING RECEPTACLE	⊕ 4-WAY SWITCH
⊕ FAN/LIGHT COMB.	○ FLOOR RECEPTACLE	⊕ DIMMER SWITCH
— FLUORESCENT TUBE	⊕ WATERPROOF RECEP.	⊕ ELEC. PANEL BOX
⊕ FLUOR. LIGHT FIXTURE	⊕ GROUND FAULT	⊕ T.V. CABLE RECEP.
⊕ EXHAUST FAN	⊕ DISPOSAL UNIT	⊕ TELEPHONE JACK
⊕ CL'G. FAN	⊕ 220 VOLT RECEPTACLE	⊕ COMPUTER JACK
⊕ FLOOD LIGHT		



8' CLG. UNLESS OTHERWISE NOTE
ELECTRICAL FLOOR PLAN
 SCALE: 3/16" = 1'-0"



8' CLG. UNLESS OTHERWISE NOTE
HVAC FLOOR PLAN
 SCALE: 3/16" = 1'-0"
 1904 HEATED SQUARE FOOTAGE

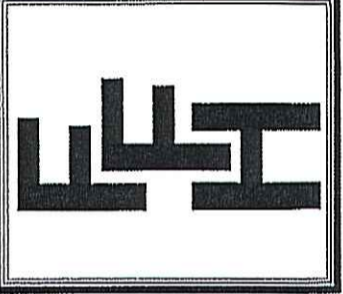
NOTE:
 HVAC CONTRACTOR TO VERIFY and PROVIDE OWNERS and BUILDER UNIT INFORMATION, BTUH REQUIREMENTS, and DUCT LAYOUTS BEFORE CONSTRUCTION BEGINS.

TOTAL HEAT GAIN = 30,654 B.T.U.H.
 TOTAL HEAT LOSS = 48,457 B.T.U.H.

VP
 CP

DATE:
 JUNE-2020

FREEDOM FAMILY HOMES
 P.O. BOX 608
 DUNN, N.C. - 28335
 O: (910) 892-1231 FAX: (910) 892-5680
 © 2020, FREEDOM FAMILY HOMES



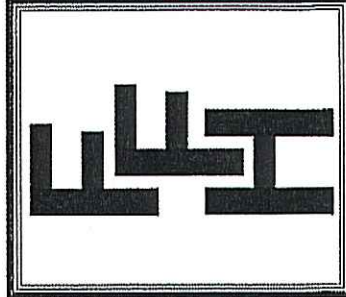
**EXCLUSIVE PLAN FOR
 FREEDOM FAMILY HOMES
 PLANTATION~PRICHARD
 w/out GARAGE**

PLAN:
 SHEET NO.
4

COMPUTER FILE: FREEDOM FAMILY HOMES - PLANTATION-2020 W/O GARAGE - JUNE-2020

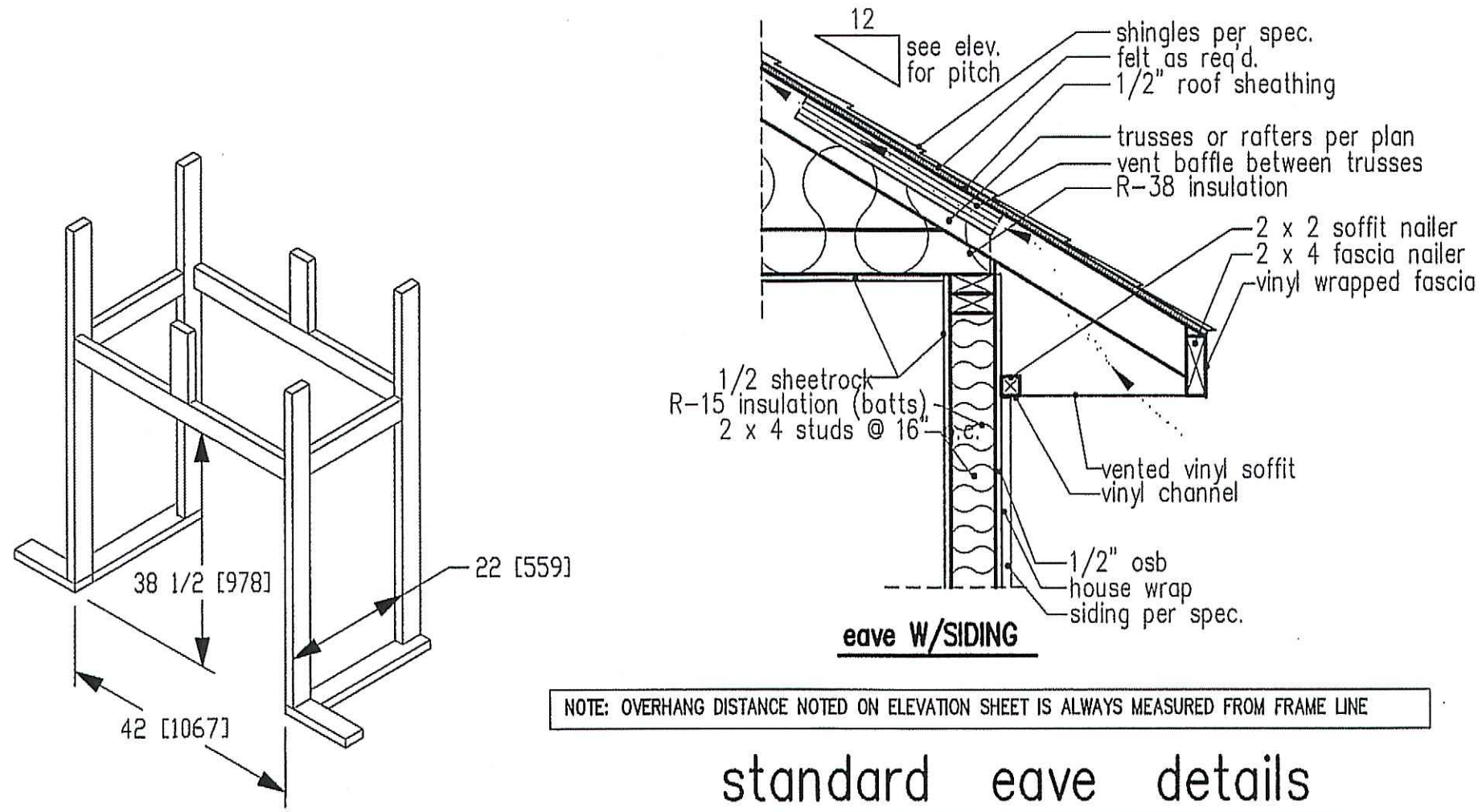
DATE:
JUNE-2020

FREEDOM FAMILY HOMES
P.O. BOX 608
DUNN, N.C. - 28335
O: (910) 892-1231 FAX: (910) 892-5680
©2020, FREEDOM FAMILY HOMES



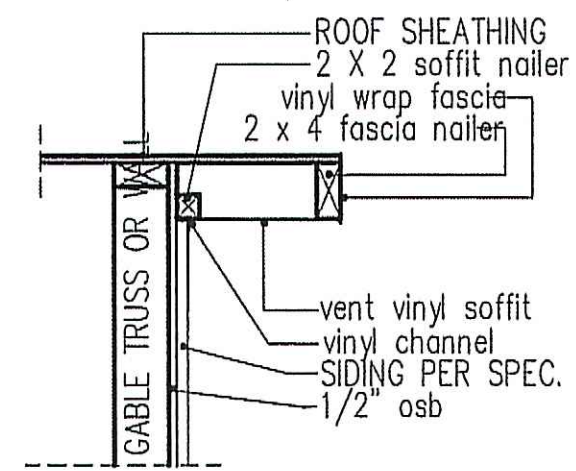
**EXCLUSIVE PLAN FOR
FREEDOM FAMILY HOMES
PLANTATION~PRICHARD
w/out GARAGE**

PLAN:
SHEET NO.
5



NOTE: OVERHANG DISTANCE NOTED ON ELEVATION SHEET IS ALWAYS MEASURED FROM FRAME LINE

standard eave details



NOTE: OVERHANG DISTANCE NOTED ON ELEVATION SHEET IS ALWAYS MEASURED FROM FRAME LINE

TABLE R602.7.5
MINIMUM NUMBER OF FULL HEIGHT STUDS AT EACH END OF HEADERS IN EXTERIOR WALLS

HEADER SPAN (feet)	MAX. STUD SPACING (Inches) [per Table R602.3(5)]	
	16	24
< 3'	1	1
4'	2	1
8'	3	2
12'	5	3
16'	6	4

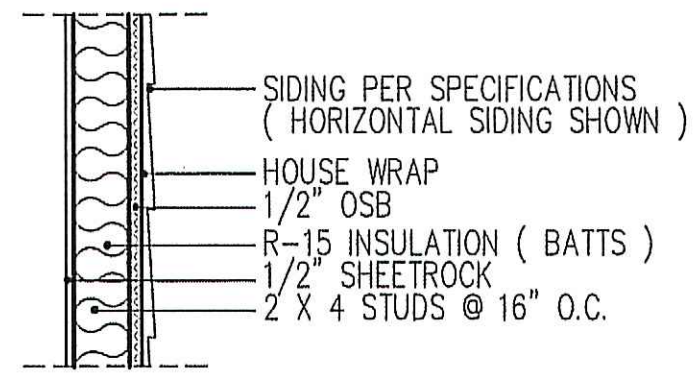
GIRDER AND HEADER SIZES AND JACK STUD REQUIREMENTS ON EXTERIOR AND INTERIOR LOAD BEARING WALLS ARE TO COINCIDE WITH TABLE EXT.~R602.7 (1) AND INT.~R602.7 (2).

DIMENSIONS IN [] ARE MM

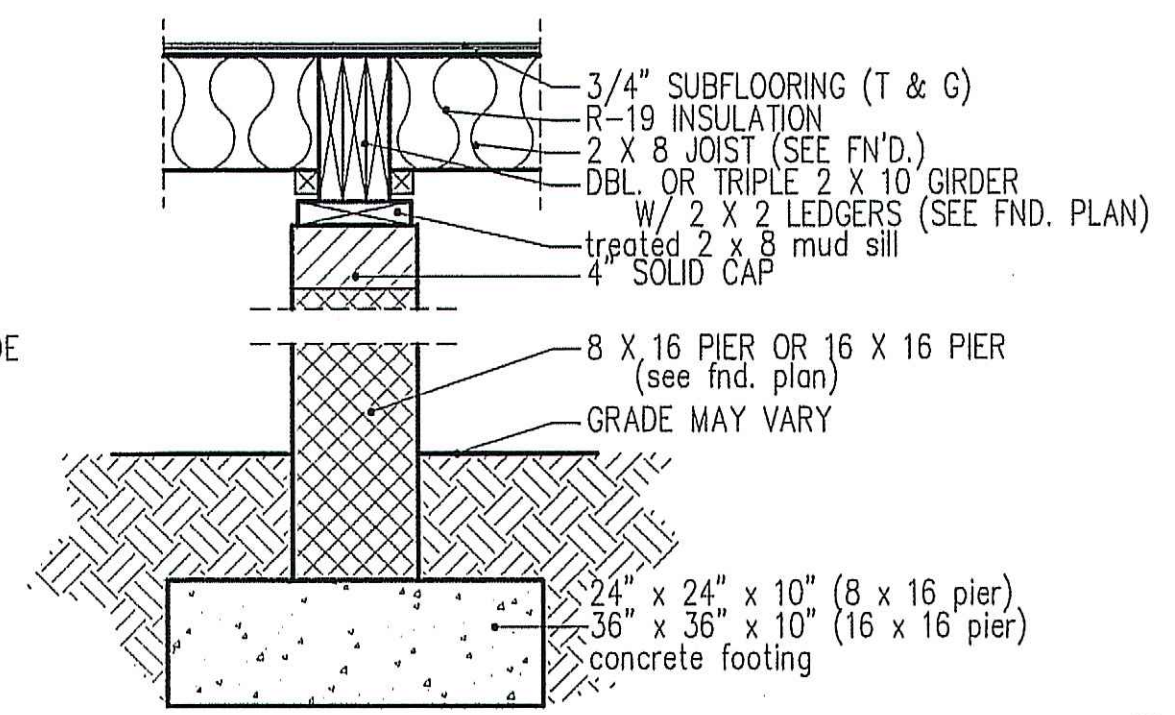
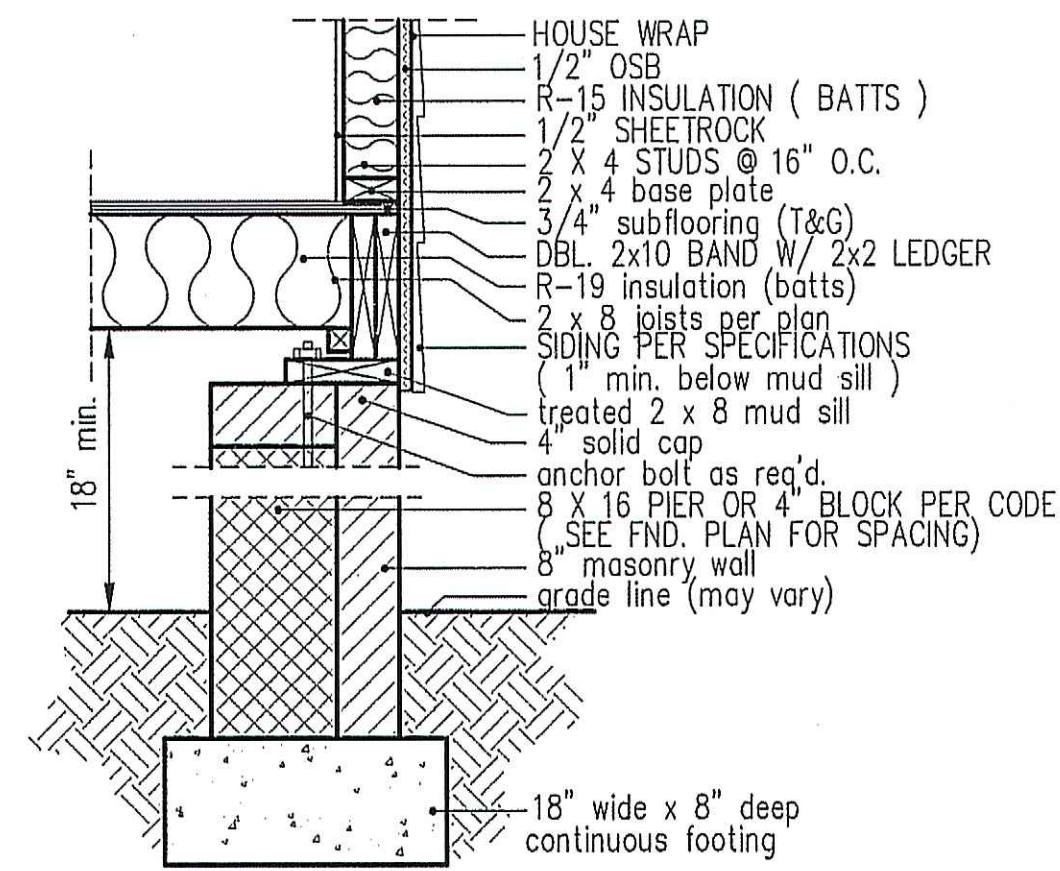
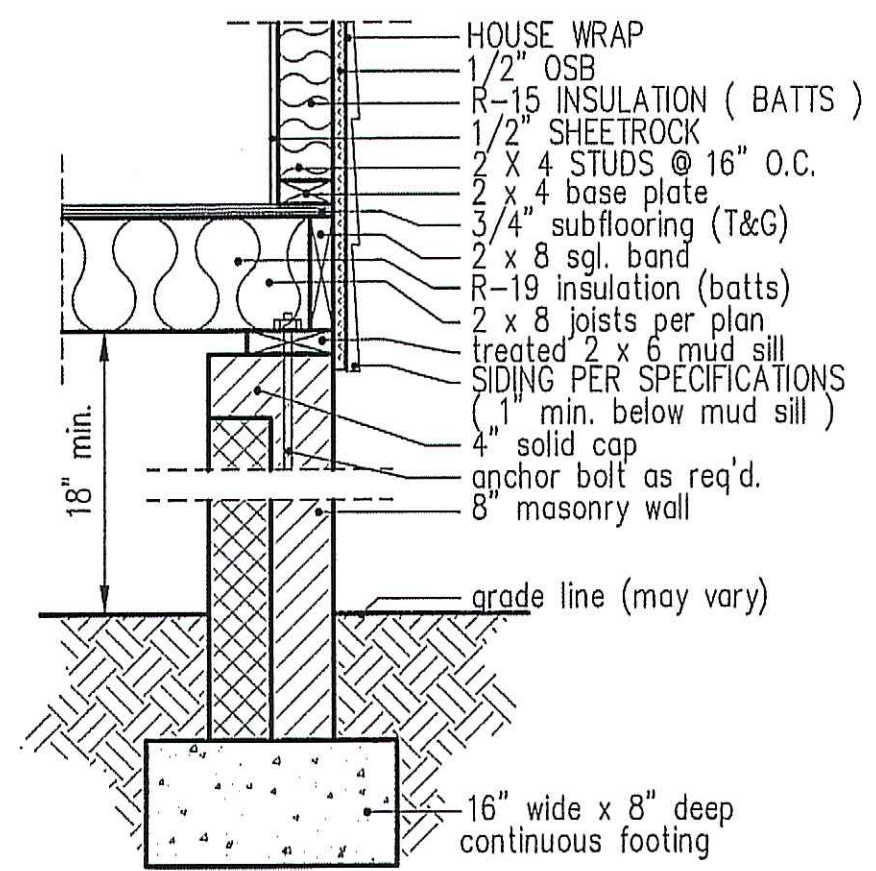
SPECIFICATIONS

Model 6000-TR	Height		Front Width		Back Width		Depth		Glass Size	BTU Input
	Actual	Framing	Actual	Framing	Actual	Framing	Actual	Framing		
Inches	38	38-1/2	41	42	28-1/2	42	21-1/2	22		

Reference dimensions only. We recommend measuring individual units at installation.



intermediate wall details



VP
9/2