

**LIST OF SYMBOLS**

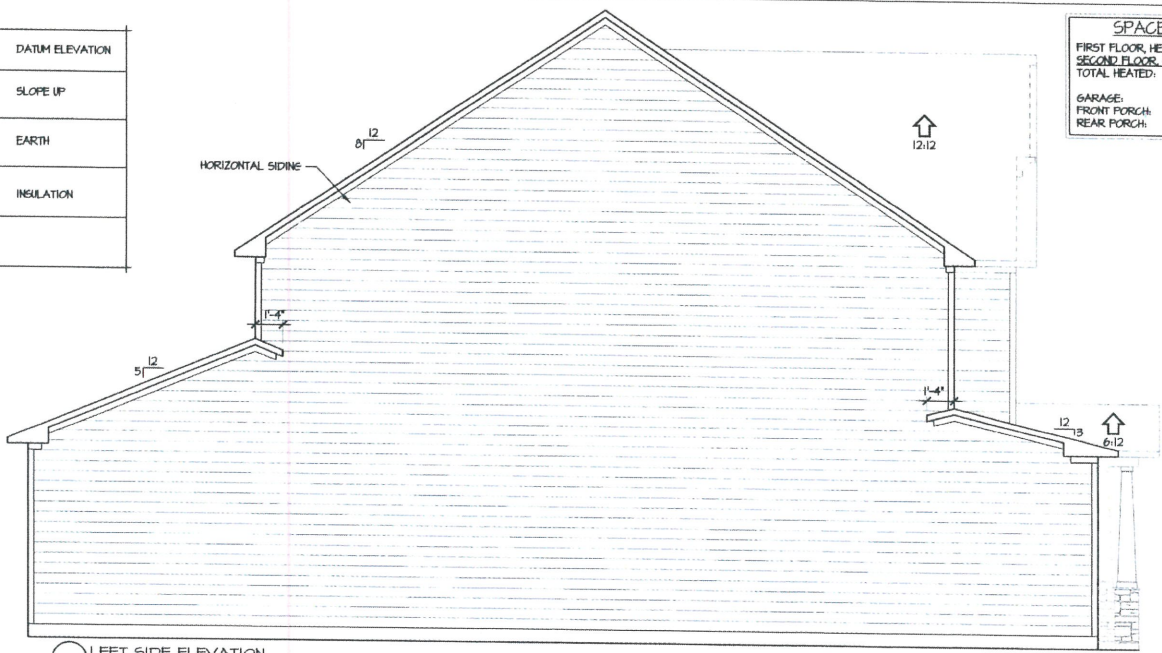
	SECTION MARK		DATUM ELEVATION
	DETAIL MARK		SLOPE UP 12:12
	TITLE MARK		EARTH
	INTERIOR BEARING WALL		INSULATION
	NUMBER OF GANS STUDS IN WALL		

**TABLE OF CONTENTS**

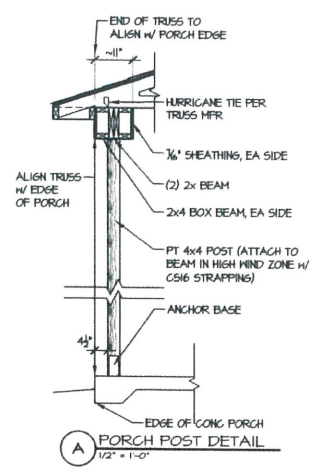
1	ELEVATIONS
2	ELEVATIONS
3	FOUNDATION PLAN
4	1st FLOOR PLAN
5	2nd FLOOR PLAN
E1	1st FLOOR ELECTRICAL PLAN
E2	2nd FLOOR ELECTRICAL PLAN

**SPACE DATA**

FIRST FLOOR, HEATED:	1444 SF
SECOND FLOOR, HEATED:	1410 SF
TOTAL HEATED:	2862 SF
GARAGE:	514 SF
FRONT PORCH:	96 SF
REAR PORCH:	154 SF

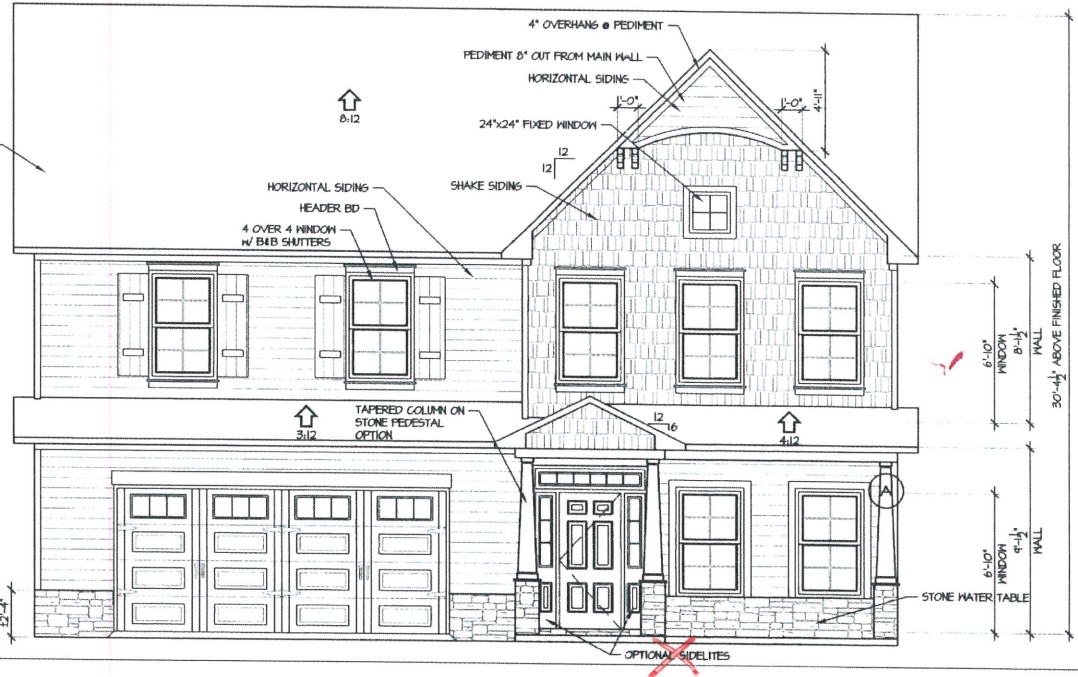


2 LEFT SIDE ELEVATION  
 1/4" = 1'-0"



A PORCH POST DETAIL  
 1/2" = 1'-0"

1 FRONT ELEVATION  
 1/4" = 1'-0"



**CRD**  
 CAROLINA RESIDENTIAL DESIGN GROUP, LLC  
 Professional Member  
 Institute of Chartered Architects  
 American Institute of Professional Design  
 Certified Professional Building Designer  
 TODD TUCKER, AIA, CPBD  
 919-435-7930

AMERICAN INSTITUTE OF BUILDING DESIGNERS  
**A I B D**

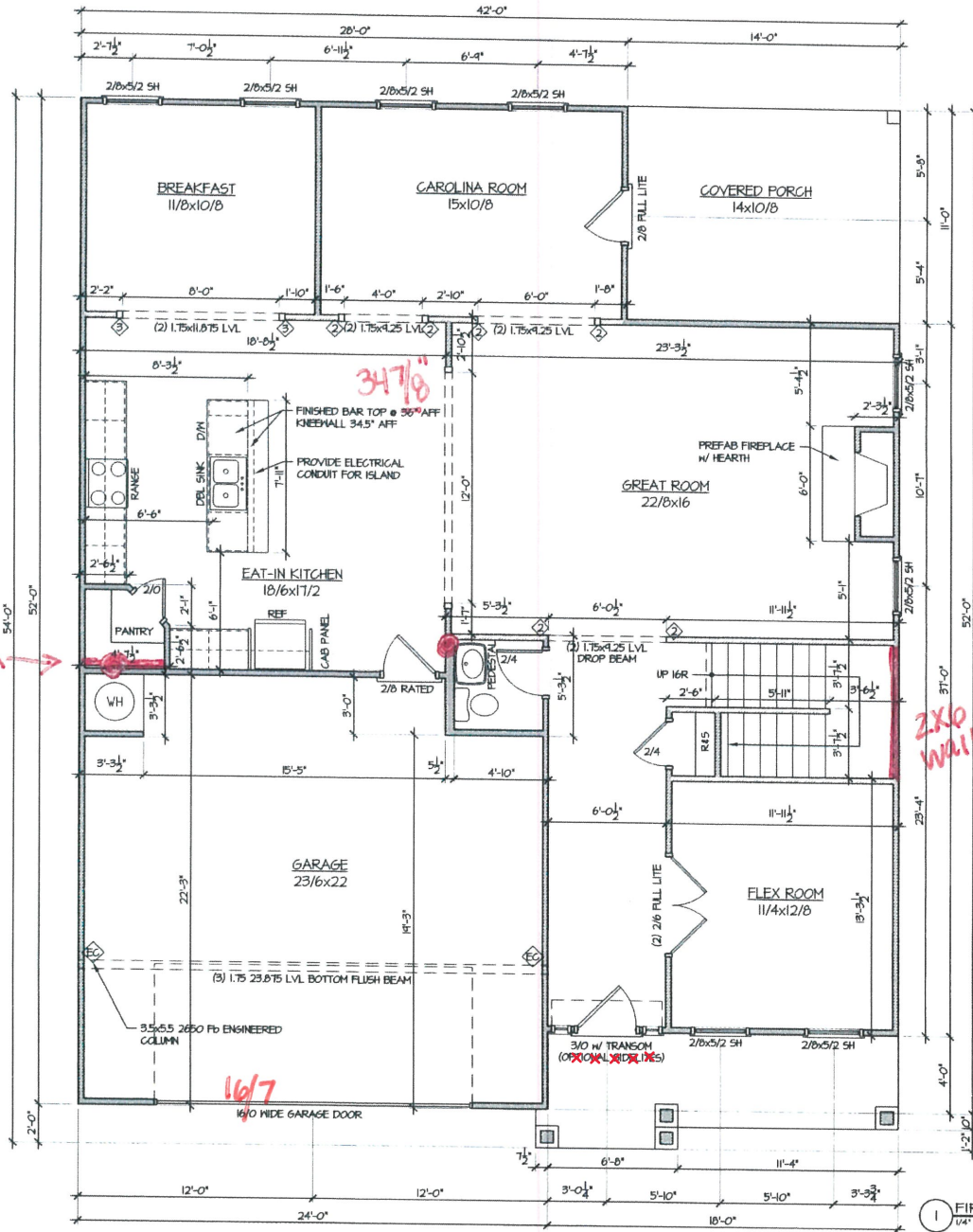
NATIONAL COUNCIL OF ARCHITECTS  
 TODD TUCKER 34 - 156

The Architectural Firm, Carolina Residential Design Group, LLC, is not responsible for any construction or other errors or omissions in this drawing or any other drawings or specifications prepared by the Architectural Firm or any other person or entity. The Architectural Firm is not responsible for any errors or omissions in this drawing or any other drawings or specifications prepared by the Architectural Firm or any other person or entity. The Architectural Firm is not responsible for any errors or omissions in this drawing or any other drawings or specifications prepared by the Architectural Firm or any other person or entity.

**Caviness Land**  
 ELEVATIONS/DETAILS  
 SHEET TITLE:

CL 2862  
 SCALE AS NOTED  
 JANUARY 2018  
 REV: 1





SPACE DATA	
FIRST FLOOR HEATED:	1444 SF
SECOND FLOOR HEATED:	1418 SF
TOTAL HEATED:	2862 SF
GARAGE:	514 SF
FRONT PORCH:	46 SF
REAR PORCH:	154 SF

**FIELD & REDLINE NOTES**

---



---



---



---



---



---



---



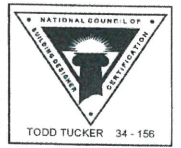
---



---



---



ALL DIMENSIONS UNLESS OTHERWISE NOTED TO BE TO FACE UNLESS OTHERWISE NOTED TO BE TO CENTERLINE. ALL DIMENSIONS TO BE TO FACE UNLESS OTHERWISE NOTED TO BE TO CENTERLINE. ALL DIMENSIONS TO BE TO FACE UNLESS OTHERWISE NOTED TO BE TO CENTERLINE. ALL DIMENSIONS TO BE TO FACE UNLESS OTHERWISE NOTED TO BE TO CENTERLINE.

**CAVINNESS LAND**

**FIRST FLOOR PLAN**

SHEET TITLE:

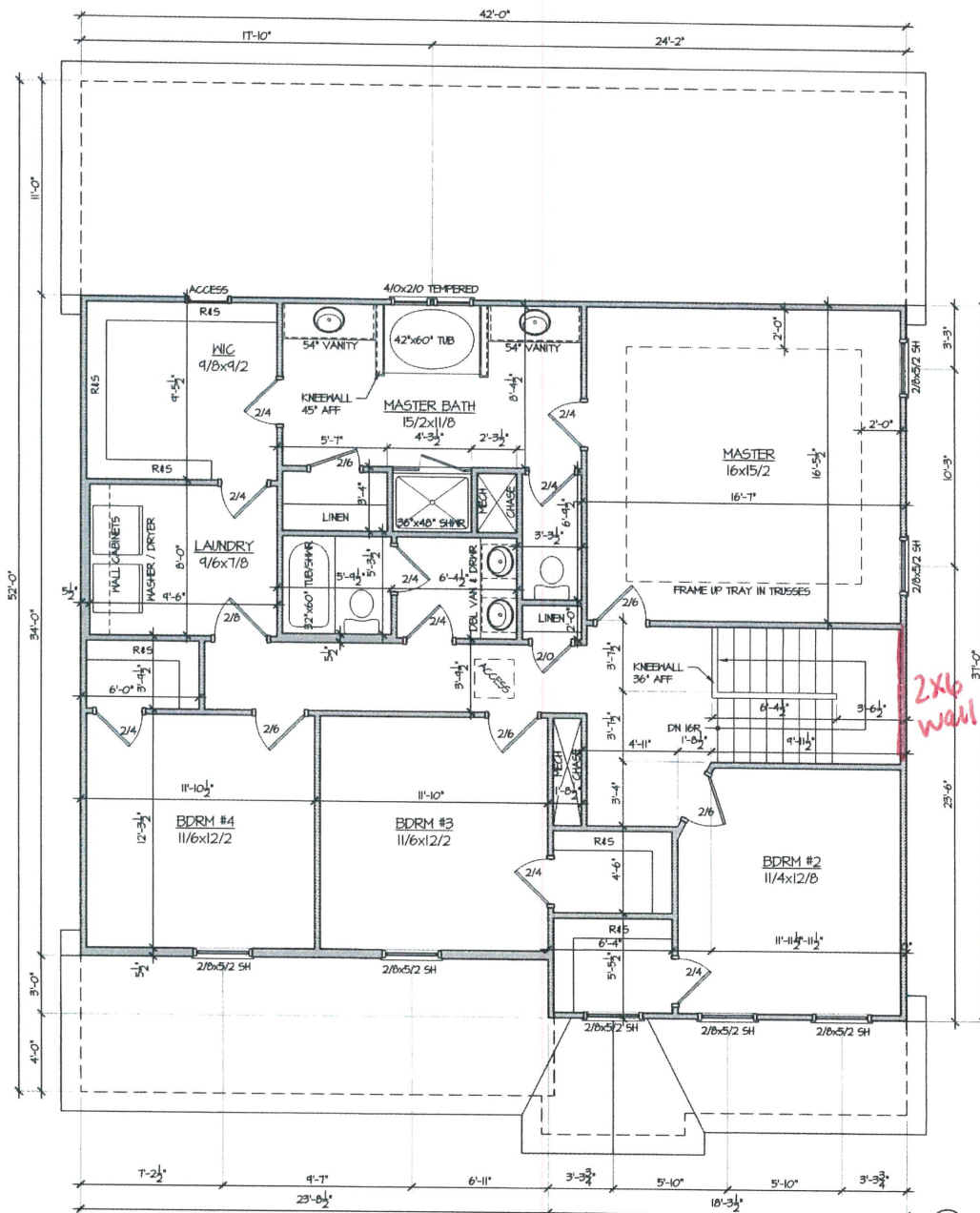
CL 2862

SCALE AS NOTED

JANUARY 2018

REV.	4

1 FIRST FLOOR PLAN  
1/4" = 1'-0"



SPACE DATA	
FIRST FLOOR HEATED	1444 SF
SECOND FLOOR HEATED	1462 SF
TOTAL HEATED	2862 SF
GARAGE	514 SF
FRONT PORCH	46 SF
REAR PORCH	154 SF

**FIELD & REDLINE NOTES**

---



---



---



---



---



---



---



---



---



---

**CAROLINA RESIDENTIAL DESIGN GROUP, LLC**  
 Professional Services  
 Institute of Class of the Architecture  
 Approved Institute of Building Design  
 Certified Professional Building Designer  
 TODD TUCKER, AIA, CPBD  
 919-425-7030

AMERICAN INSTITUTE OF ARCHITECTS

NATIONAL COUNCIL OF BUILDING EXAMINERS  
 TODD TUCKER 34 - 156

THE INFORMATION ON THIS SHEET IS THE PROPERTY OF THE ARCHITECT. IT IS TO BE USED ONLY FOR THE PROJECT AND SITE SPECIFICALLY IDENTIFIED HEREON. NO PART OF THIS SHEET IS TO BE REPRODUCED, COPIED, OR TRANSMITTED IN ANY FORM OR BY ANY MEANS, WITHOUT THE WRITTEN PERMISSION OF THE ARCHITECT. ANY REPRODUCTION, COPYING, OR TRANSMISSION OF THIS SHEET WITHOUT THE WRITTEN PERMISSION OF THE ARCHITECT IS PROHIBITED. ANY SUCH ACT SHALL BE AT THE USER'S SOLE RISK AND WITHOUT LIABILITY TO THE ARCHITECT.

**CAVINNESS Land**

SHEET TITLE: **SECOND FLOOR PLAN - 4 BDRM**

CL 2862

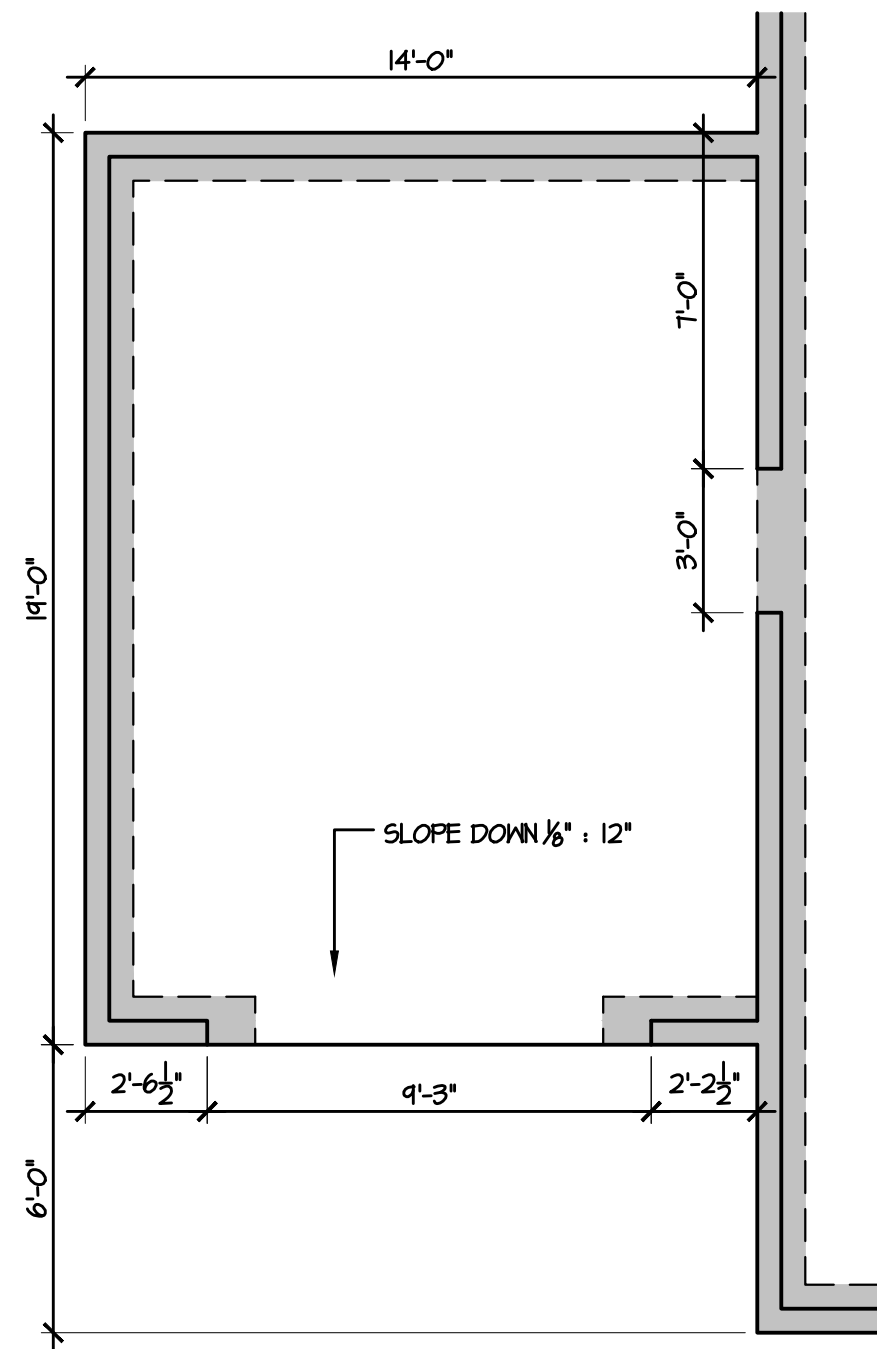
SCALE AS NOTED

JANUARY 2018

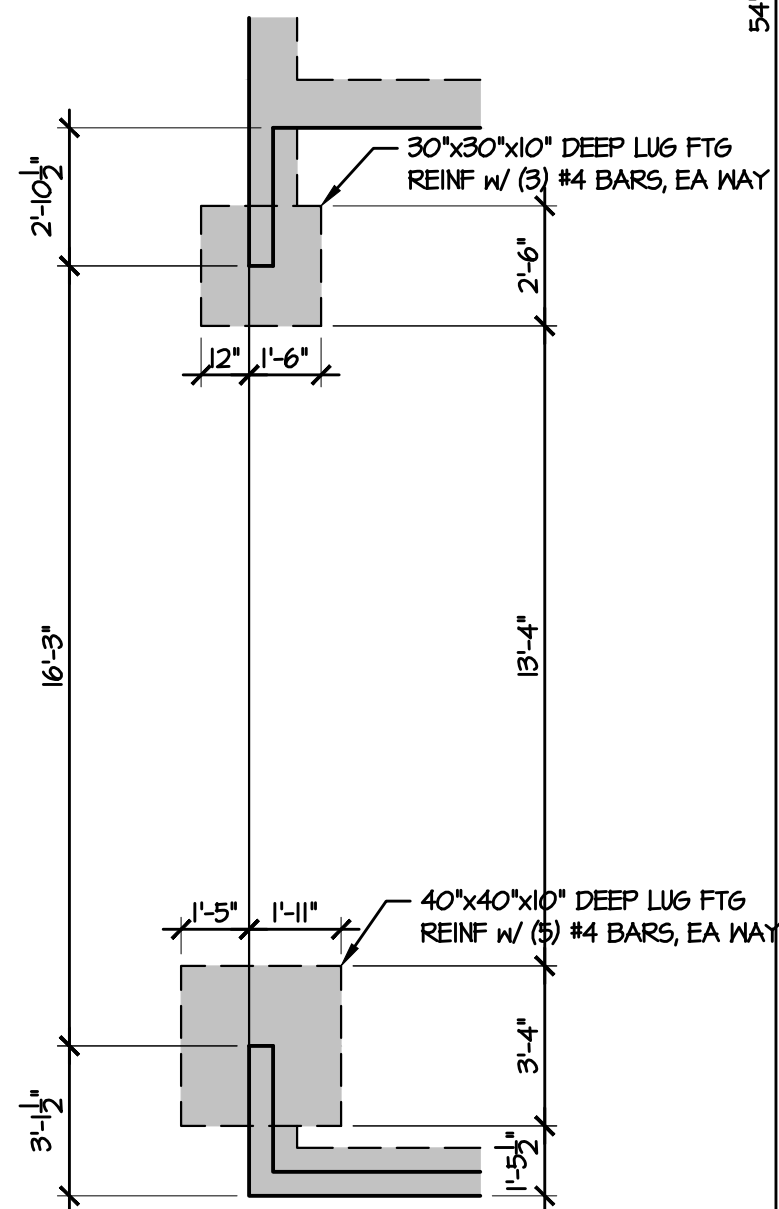
REV: **5**

**1 SECOND FLOOR PLAN**  
 1/4" = 1'-0"

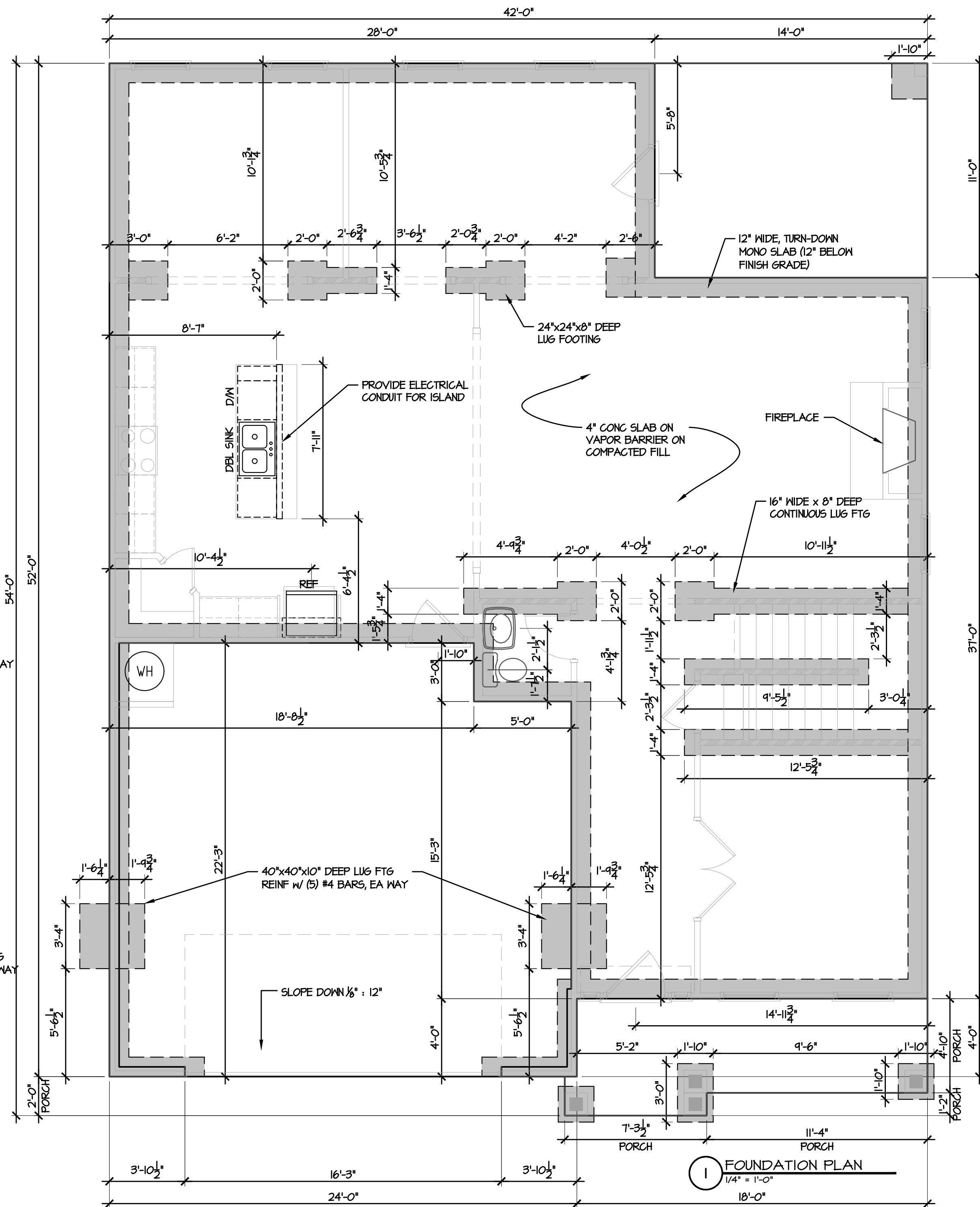
C:\Projects\Caviness Land\CL 2862\CL 2862 CL 5-3-20.dwg, 5/3/2020 10:07:22 AM



3 3rd CAR OPTION  
1/4" = 1'-0"



2 SIDE LOAD OPTION  
1/4" = 1'-0"



TODD TUCKER 34 - 156

© 2019 CavLand  
1041-B Robeson St  
Fayetteville, NC 28305  
Office: 910-339-6330  
Fax: 910-339-6333

# CL 2862

## SLAB PLAN

SCALE:  
AS NOTED

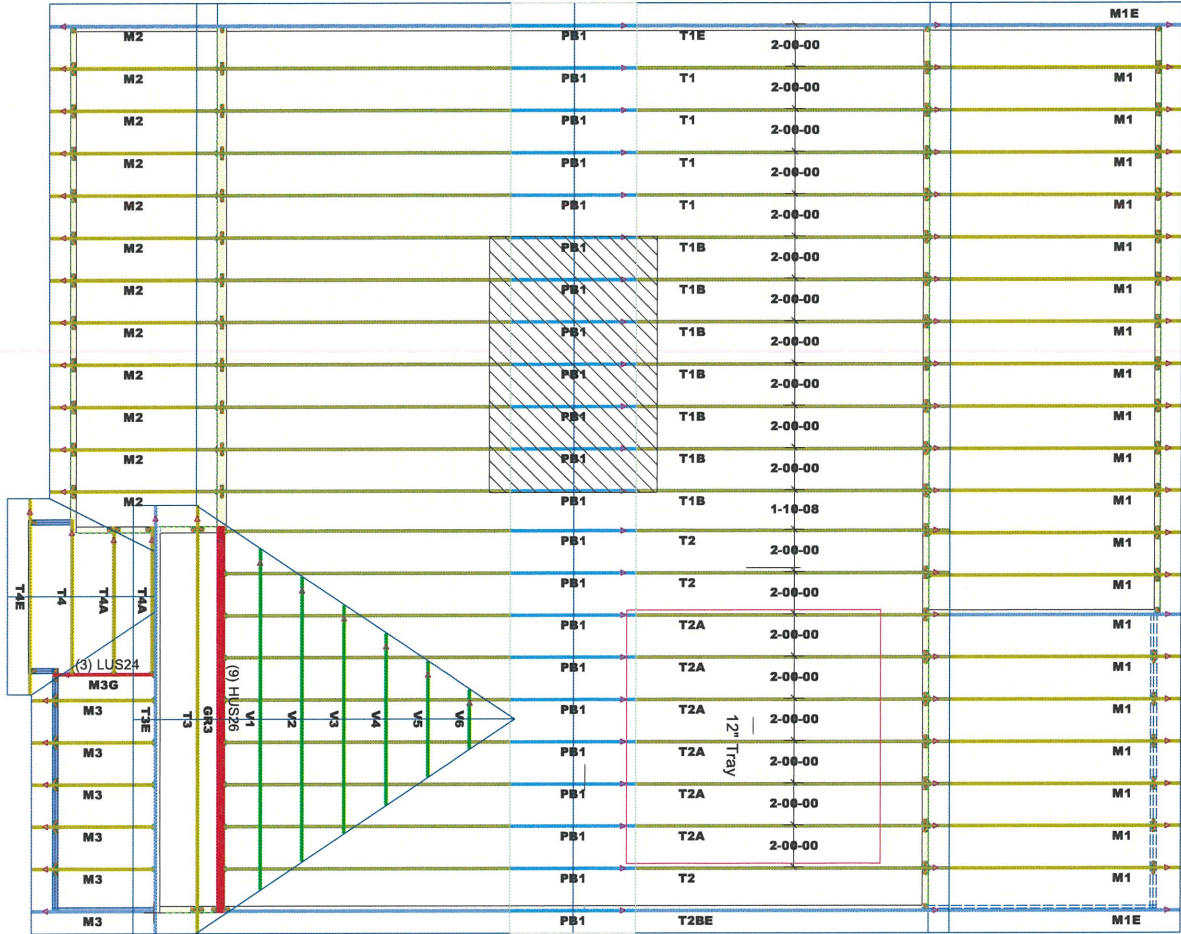
DATE:  
APRIL 2019

PLAN:  
CL 2862

LOT NO:

SHEET NO:

# 3



THIS LAYOUT IS INTENDED FOR THE PURPOSE OF TRUSS LOCATION AND PLACEMENT ONLY. REFER TO THE BUILDING PLANS FOR ACTUAL BUILDING CONSTRUCTION.

GENERAL NOTES:

- DO NOT CUT OR MODIFY TRUSSES
- TRUSSES ARE SPACED 24" ON CENTER UNLESS OTHERWISE NOTED
- REFER TO THE INDIVIDUAL TRUSS DESIGN DRAWINGS FOR THE LOCATION OF LATERAL BRACING AND MULTI-PLY CONNECTION REQUIREMENTS.
- PER ANSI TPI 1-2002 THE TRUSS ENGINEER IS RESPONSIBLE FOR TRUSS TO TRUSS CONNECTIONS AND TRUSS PLY TO PLY CONNECTIONS. THIS TRUSS LAYOUT PLAN RECOMMENDS TRUSS TO BEARING CONNECTIONS AND TRUSS TO BEAM CONNECTIONS WHICH SHALL BE REVIEWED BY THE BUILDING DESIGNER. IT IS THE RESPONSIBILITY OF THE BUILDING DESIGNER TO RESOLVE ALL ROOF FORCES ADEQUATELY TO THE FOUNDATION.

WIND SPEED: 130 mph

BOTTOM DEAD LOAD: 10.0 lb/ft<sup>2</sup>

TOP DEAD LOAD: 10.0 lb/ft<sup>2</sup>

TOP LIVE LOAD: 20.0 lb/ft<sup>2</sup>

PROJECT:

Master CL 2862 CP

CUSTOMER:

Caviness Land Development

MODEL:

CL 2862 CP

QUOTE #:

1800888

PRINT DATE:

6/14/2018

DRAWN BY:

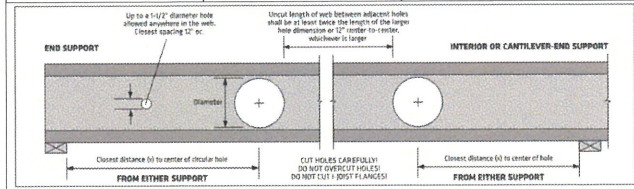
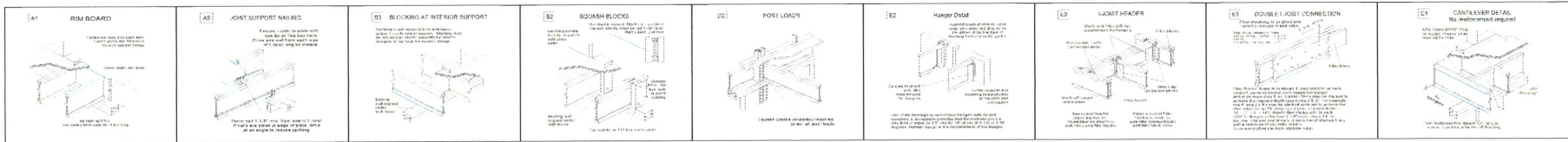
Rodney Evans

SCALE:

N.T.S

DEDICATED TO QUALITY AND EXCELLENCE  
200 EMMETT ROAD  
DUNN, NORTH CAROLINA 28334  
PHONE: 919-852-5700

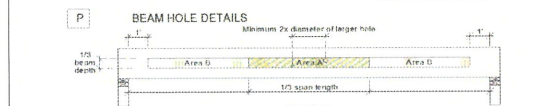




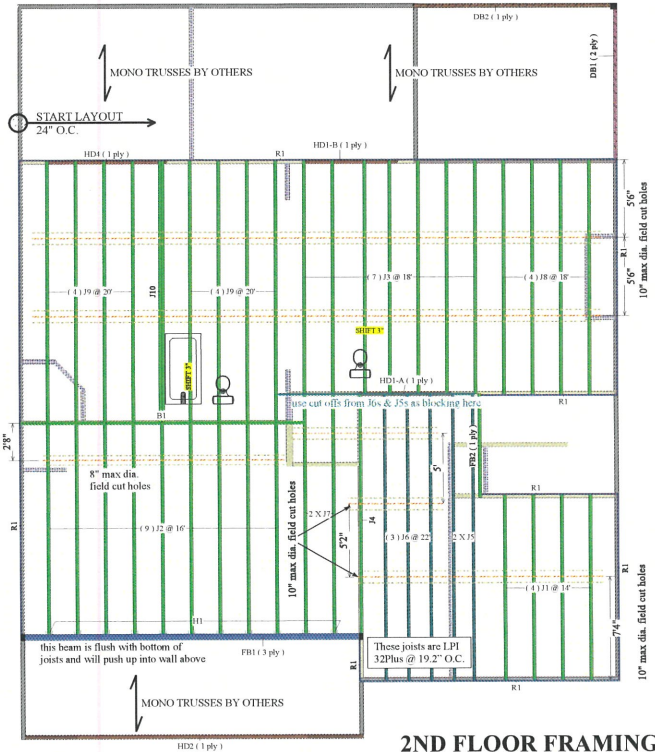
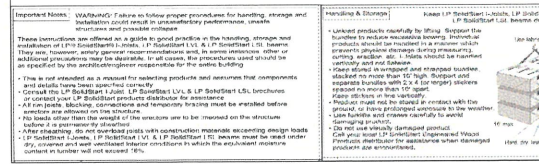
- TO USE:**
- Select the required series and depth.
  - Determine the support condition for the nearest bearing, end support or interior support (including cantilever end supports).
  - Select the row corresponding to the required Clear Span for spans between those listed, use the next largest value.
  - Select the column corresponding to the required hole diameter. For diameters between those listed, use the next largest value.
  - The intersection of the Clear Span row and Hole Diameter column gives the minimum distance from the inside face of bearing to the center of a circular hole.
  - Double check the distance to the other support using the appropriate support condition.

Depth	Clear Span (ft)	Distance from End Support					Distance from Interior or Cantilever-End Support				
		Hole Diameter	Hole Diameter	Hole Diameter	Hole Diameter	Hole Diameter	Hole Diameter	Hole Diameter	Hole Diameter	Hole Diameter	
14"	14'	1'-0"	1'-0"	1'-0"	1'-0"	2'-2"	1'-0"	1'-0"	1'-5"	2'-7"	3'-9"
	18'	1'-0"	1'-0"	1'-0"	1'-0"	4'-6"	1'-8"	2'-10"	3'-11"	5'-1"	6'-3"
	22'	1'-5"	2'-9"	4'-1"	5'-6"	7'-0"	4'-2"	5'-4"	6'-5"	7'-7"	8'-9"
	26'	3'-8"	5'-0"	6'-5"	8'-0"	9'-8"	6'-8"	7'-10"	8'-11"	10'-1"	11'-4"
16"	18'	1'-0"	1'-0"	1'-4"	2'-5"	3'-7"	4'-11"	1'-6"	2'-6"	3'-6"	4'-6"
	22'	1'-4"	2'-5"	3'-6"	4'-9"	6'-1"	7'-5"	4'-0"	5'-0"	6'-0"	7'-0"
	26'	3'-6"	4'-8"	5'-11"	7'-2"	8'-7"	10'-1"	6'-6"	7'-6"	8'-6"	9'-6"
	30'	5'-8"	7'-0"	8'-4"	9'-9"	11'-3"	12'-10"	9'-0"	10'-0"	11'-0"	12'-0"

- DESIGN ASSUMPTIONS:**
- The hole locations listed above are valid for floor joists supporting only uniform loads. The total uniform load shall not exceed 50 psf (e.g., 40 psf Live Load and 10 psf dead Load) spaced 24" o.c.
  - Hole location is measured from the inside face of bearing to the center of a circular hole from the joist's support.
  - Clear Span has not been verified for these joists, and is chosen for informational purposes only. Verify that the joist span meets all work for the span and loading conditions needed before clearing hole location.
  - The maximum hole depths for circular holes is the joist depth less 4" except the maximum hole depth is 5" for 1 1/2" LPI joists, and 8" for 2 1/2" LPI joists.
  - Joists cannot be fastened in the span unless designated " without further analysis by a design professional.



- NOTES:**
- These particulars apply to uniformly loaded beams selected from the Quick Reference Tables on the Uniform Load Tables or designed with LPI design software above both ends only. For all other applications, such as beams with concentrated loads, please contact your LPI Sales/Service Representative or LPI distributor for assistance.
  - Beams holes can be drilled anywhere in "Area A" provided that no more than four holes are drilled with the maximum spacing described in the diagram. The maximum hole size is 1 1/2" for depths up to 9' 11", and 2" for depths greater than 9' 11".
  - Rectangular holes are NOT allowed.
  - DO NOT drill holes in cantilevers without prior approval from the project designer.
  - Other hole sizes and configurations MAY be possible with further engineering analysis. For more information, contact your LPI Sales/Service Representative or LPI distributor.
  - Up to three 2 1/2" holes may be drilled in "Area B" to accommodate vents and/or water lines. These holes shall be at least 17" apart. This makes shall be located in the middle third of the depth, or a minimum of 2" from the bottom and top of the beam. For beams shall be more than 9' 11", locate holes in area depicted.
  - Protect plumbing holes from moisture.



**2ND FLOOR FRAMING**  
SCALE: 1/4" = 1'

**2nd Fir Joist (Flush)**

Label	Description	Width	Depth	Qty	Plies	Pcs	Length
FJ2	LPI 20Plus	2.5	14	1	2	2	20'-0"
FJ3	LPI 20Plus	2.5	14	1	2	2	20'-0"
FJ4	LPI 20Plus	2.5	14	1	2	2	20'-0"
FJ5	LPI 20Plus	2.5	14	1	2	2	20'-0"
FJ6	LPI 20Plus	2.5	14	1	2	2	20'-0"
FJ7	LPI 20Plus	2.5	14	1	2	2	20'-0"
FJ8	LPI 20Plus	2.5	14	1	2	2	20'-0"
FJ9	LPI 20Plus	2.5	14	1	2	2	20'-0"
FJ10	LPI 20Plus	2.5	14	1	2	2	20'-0"
FJ11	LPI 20Plus	2.5	14	1	2	2	20'-0"
FJ12	LPI 20Plus	2.5	14	1	2	2	20'-0"
FJ13	LPI 20Plus	2.5	14	1	2	2	20'-0"
FJ14	LPI 20Plus	2.5	14	1	2	2	20'-0"
FJ15	LPI 20Plus	2.5	14	1	2	2	20'-0"

**LVL SL (Flush)**

Label	Description	Width	Depth	Qty	Plies	Pcs	Length
LVL1	LPI LVL 2900B-2.0E	1.75	24	1	3	3	21'-0"

**LVL SL (Dropped)**

Label	Description	Width	Depth	Qty	Plies	Pcs	Length
LVL2	LPI LVL 1.5SE	3.5	9.25	1	1	1	16'-0"
LVL3	LPI LVL 1.5SE	3.5	9.25	1	1	1	16'-0"
LVL4	LPI LVL 1.5SE	3.5	9.25	1	1	1	16'-0"
LVL5	LPI LVL 1.5SE	3.5	11.875	1	1	1	21'-0"
LVL6	LPI LVL 1.5SE	3.5	11.875	1	1	1	16'-0"

**Beam By Others (Dropped)**

Label	Description	Width	Depth	Qty	Plies	Pcs	Length
B1	LPI LVL 2900B-2.0E	1.75	24	1	3	3	21'-0"

**Rim Board**

Label	Description	Width	Depth	Qty	Plies	Pcs	Length
R1	LPI APA Rated OSB 1.125 X 14	1.125	14	1	18	18	12'-0"

**Hanging**

Label	Description	Width	Depth	Qty	Plies	Pcs	Length
H1	LPI 20 Plus	2.5	14	1	1	1	18'-0"

**Beam Girder**

Label	Description	Skew	Slope	Fasteners	Supported Member
B1	LPI 20 Plus			12 Hd	fasteners



2160 Satellite Blvd., Suite 450  
Duluth, GA 30097  
888-613-5078



Dealer  
84 Lumber-Fayetteville #2307

Dealer Address  
620 Belt Road  
Fayetteville, NC 28301  
(910) 867-9185

Project  
CL2862 GL CP  
Created  
January 29, 2020  
Layout Name  
CL2862 GL CP

Description  
Caviness Land  
CL2862 GL CP  
Designer  
Kyle Miltzer  
Revised  
March 25, 2020

2nd Fir ASD (USA)  
IBCIRC 2015

**Floor**

Design Method	Building Code
23/32 APA Rated Strand-14 Floor <td>OSB</td>	OSB

**Fastener**

Legend	Fastener
[Symbol]	3.5" Ext Wall
[Symbol]	3.5" Int Wall
[Symbol]	5.5" Int Wall
[Symbol]	3.5" Non-Brq Wall
[Symbol]	5.5" Non-Brq Wall
[Symbol]	5.5" Ext Wall
[Symbol]	Wall Opening
[Symbol]	LPI APA Rated OSB 1.125 X 14
[Symbol]	LPI 20Plus 14
[Symbol]	LPI 32Plus 14
[Symbol]	LPI SL 1.5SE 3.5 X 9.25 (Dropped)
[Symbol]	LPI SL 1.5SE 3.5 X 11.875 (Dropped)
[Symbol]	LPI LVL 2900B-2.0E 1.75 X 24 1.3 X 9.25 (Dropped)

