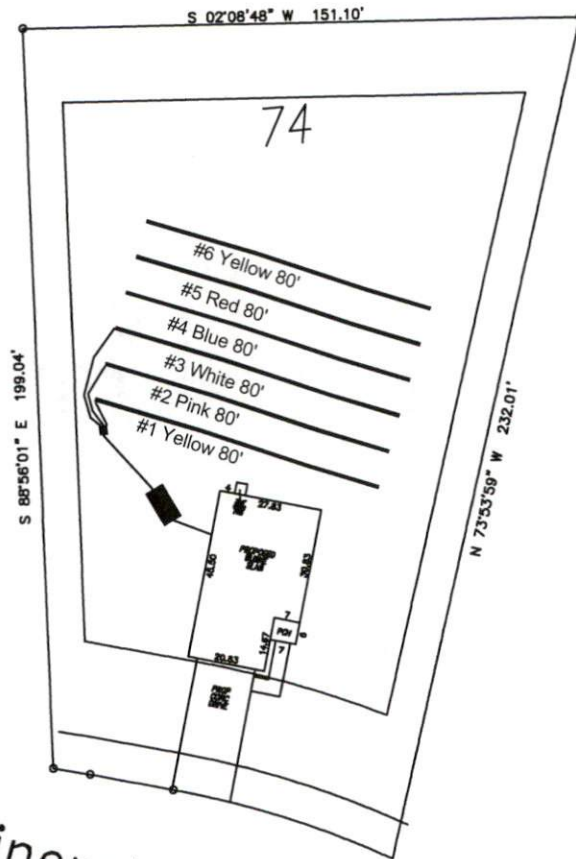


Avery Pond 3-Bedroom Septic Proposal Lot #74



Mineral Springs Way

System: Gravity to D-Box
 Lines: 1-3 (240')
 0.375 LTAR
 24" Trench Bottom
 Accepted Status System
 Repair: Gravity to D-Box
 Lines: 4-6 (240')
 0.375 LTAR
 24" Trench Bottom
 Accepted Status System

GRAPHIC SCALE
 1" = 50'



Adams
 Soil Consulting
 919-414-6761
 Job #708

Avery Pond

Lot #74

3-Bedroom Home (360 gal./day)

<u>LINE #</u>	<u>COLOR</u>	<u>BS</u>	<u>HI</u>	<u>FS</u>	<u>ELEVATION</u>	<u>LINE LENGTH</u>	<u>Design Length</u>
TBM		2.0		100.0		<u>in field</u>	<u>installation</u>
INST. 1			102.0				
1	<i>Yellow</i>			3.7	98.3	90	80
2	<i>Pink</i>			3.9	98.1	95	80
3	<i>White</i>			4.2	97.8	100	80
4	<i>Blue</i>			4.4	97.6	105	80
5	<i>Red</i>			4.6	97.4	110	80
6	<i>Yellow</i>			4.9	97.1	115	80

System

Lines 1-3

Repair

Lines 4-6

System Type

Accepted Status System

Accepted Status System

Suggested Soil LTAR

0.375

0.375

Total Line Length

240

240

Square Footage

720

720

Proposed Trench Bottom

24"

24"

Distribution Method

Gravity to D-Box

Gravity to D-Box