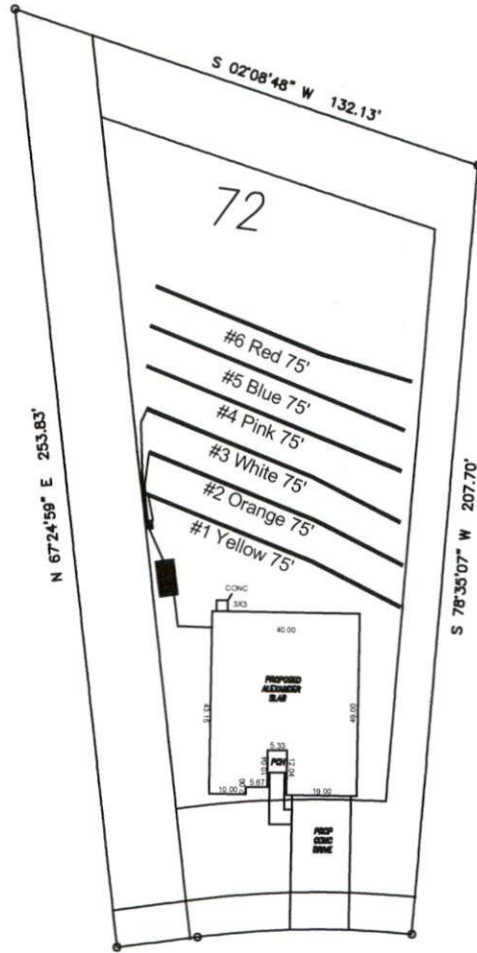


# Avery Pond 3-Bedroom Septic Proposal Lot #72



Mineral Springs Way

System: Gravity to D-Box  
 Lines: 1-3 (225')  
 0.4 LTAR  
 24" Trench Bottom  
 Accepted Status System  
 Repair: Gravity to D-Box  
 Lines: 4-6 (225')  
 0.4 LTAR  
 18" Trench Bottom  
 Accepted Status System

GRAPHIC SCALE  
 1" = 50'



Adams  
 Soil Consulting  
 919-414-6761  
 Job #708

**Avery Pond**

**Lot #72**

3-Bedroom Home (360 gal./day)

<u>LINE #</u>	<u>COLOR</u>	<u>BS</u>	<u>HI</u>	<u>FS</u>	<u>ELEVATION</u>	<u>LINE LENGTH</u>	<u>Design Length</u>
TBM		2.0		100.0		<u>in field</u>	<u>installation</u>
INST. 1			102.0				
1	<i>Yellow</i>			4.3	97.7	75	75
2	<i>Orange</i>			4.5	97.5	75	75
3	<i>White</i>			4.6	97.4	75	75
4	<i>Pink</i>			4.9	97.1	76	75
5	<i>Blue</i>			5.1	96.9	77	75
6	<i>Red</i>			5.2	96.8	78	75

**System**

Lines 1-3

**Repair**

Lines 4-6

**System Type**

Accepted Status System

Accepted Status System

Suggested Soil LTAR

0.40

0.40

**Total Line Length**

225

225

**Square Footage**

675

675

**Proposed Trench Bottom**

24"

24"

**Distribution Method**

Gravity to D-Box

Gravity to D-Box