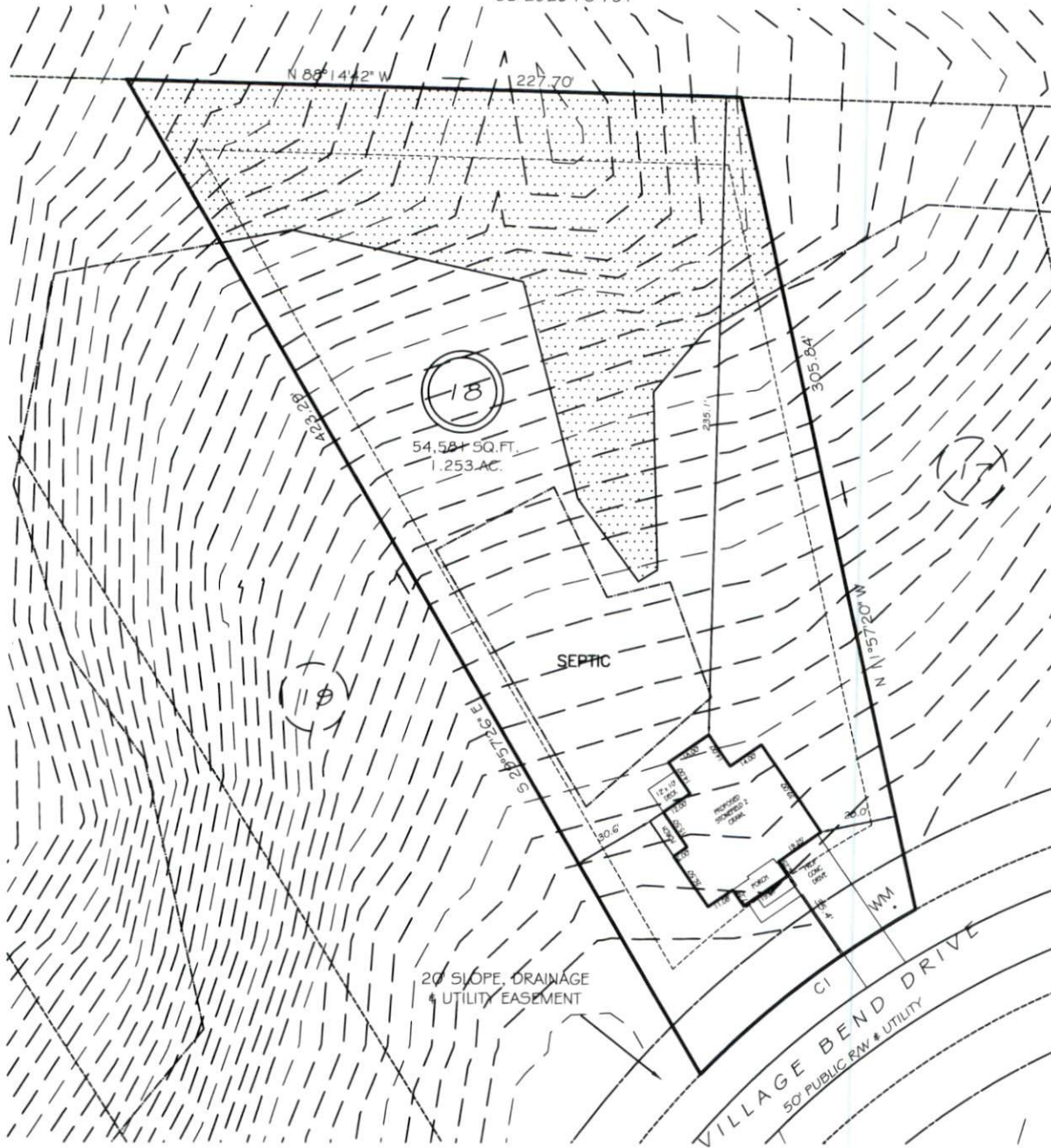


I, MICHAEL P. GRIFFIN, certify that under my direction and supervision this map was drawn from an actual field survey; that the error of closure of the survey as calculated by coordinates is 1: 10,000+; that the area shown hereon was calculated by coordinates.
 Witness my hand and seal this day of MONTH 2020.

BK 2019 PGS 421-424
 HARNETT CO. REGISTRY

JAMES T. ADAMS III
 PIN #0644-43-5956.000
 DB 2929 PG 75 I



IMPERVIOUS AREAS

HOUSE	2314 SQ. FT.
DRIVE & WALKS	804 SQ. FT.
PATIO	000 SQ. FT.
TOTAL	3118 SQ. FT.
ALLOWED	3250 SQ. FT.

REVISION: NEW PLANS 1/19/21

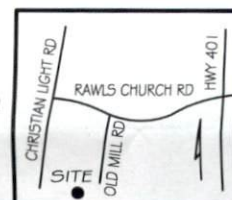
UNSUITABLE SOILS

SETBACKS

FRONT	35'
REAR	25'
SIDE	10'
CORNER SIDE	20'

LEGEND

EIP	EXISTING IRON PIPE	FES	FLARED END SECTION
IPS	IRON PIPE SET	WM	WATER METER
RW	RIGHT OF WAY	CO	CLEAN OUT
N/F	NOW OR FORMERLY	FH	FIRE HYDRANT
EIS	EXISTING IRON STAKE	CB	CATCH BASIN



PRELIMINARY
 NOT FOR RECORDATION,
 SALES OR CONVEYANCE

BLDG FOOTPRINT