

GENERAL FRAMING NOTES:

ALL LUMBER IN CONTACT WITH CONCRETE OR MASONRY SHALL BE PRESSURE TREATED.

FRAMING LUMBER SHALL BE SYP #2 GRADE AND/OR SPRUCE FINE FIR #1 AND/OR #2, KILN DRIED.

WHERE PRE-ENGINEERED JOISTS ARE USED, JOIST MANUFACTURER SHALL PROVIDE SHOP DRAWINGS, WHICH BEAR SEAL OF A N.C. ENGINEER.

STUDS AND JOISTS SHALL NOT BE CUT TO INSTALL PLUMBING OR WIRING WITHOUT ADDING METAL OR WOOD SIDE PANELS TO STRENGTHEN THE MEMBER TO ITS ORIGINAL CAPACITY.

NAIL MULTIPLE MEMBERS WITH 2 ROWS OF 16d NAILS STAGGERED 32" OC AN USE 3-16d NAILS 2" IN AT EACH END. DOUBLE ALL STUDS UNDER ROOF FOOTINGS UNO.

NAIL FLOOR JOISTS TO GILL FLATE WITH 8d TOE NAILS.

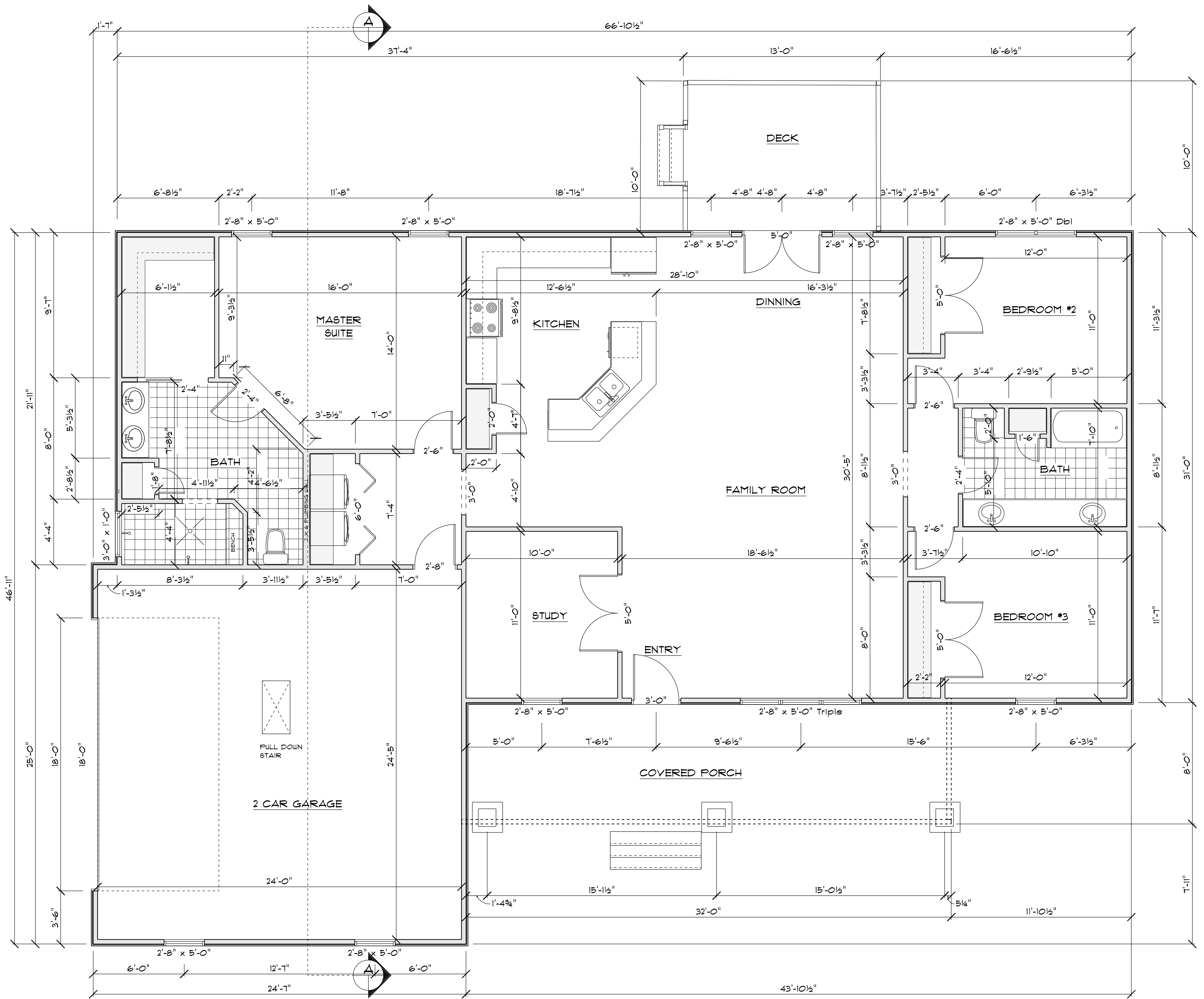
ALL EXPOSED FRAMING ON PORCHES AND DECKS SHALL BE PRESSURE TREATED. PROVIDE WATERPROOFING AND DRAINS AS REQUIRED.

ALL FRAMING TO BE 16" OC UNO. WALL FRAMING DIMENSIONS ARE BASED ON 2 X 4 STUDS UNO. DOUBLE STUDS UNDER ALL HEADERS.

LVL'S AND TJI'S TO BE SIZED BY OTHERS.

EXTERIOR WALLS IN LIVING AREAS ARE 2 X 4

| OPENING SCHEDULE | | | |
|-------------------|-------|-------|--|
| SIZE | HINGE | COUNT | LIBRARY NAME |
| 2'-8" | R | 1 | Exterior Door\Colonial |
| 5'-0" | LR | 1 | Exterior Door\French |
| 18'-0" | U | 1 | Garage |
| 6'-0" | LR | 1 | Interior Door\Bifold |
| 1'-6" | L | 1 | Interior Door\Colonial |
| 1'-8" | R | 1 | Interior Door\Colonial |
| 2'-0" | R | 1 | Interior Door\Colonial |
| 2'-4" | L | 1 | Interior Door\Colonial |
| 2'-4" | R | 1 | Interior Door\Colonial |
| 2'-6" | L | 1 | Interior Door\Colonial |
| 2'-6" | R | 2 | Interior Door\Colonial |
| 5'-0" | LR | 2 | Interior Door\Colonial |
| 5'-0" | LR | 1 | Interior Door\French |
| 2'-4" | N | 1 | Interior Door\Pocket |
| 3'-0" | L | 1 | Manufacturer\Jeld-Wen\Wood Entry\Classic\Oak |
| 2'-8" x 5'-0" | U | 1 | Window\Double Hung |
| 2'-8" x 5'-0" | U | 10 | Window\Double Hung |
| 2'-8" x 5'-0" Dbl | UU | 1 | Window\Double Hung |
| 2'-6" x 2'-6" | UU | 1 | Window\Double Hung |
| 3'-0" x 3'-0" | UU | 1 | Window\Double Hung |
| 3'-0" x 1'-0" | N | 1 | Window\Transom |



FLOOR PLAN
SCALE: 1" = 1/4"

| AREA SCHEDULE | |
|---------------------|---------------|
| NAME | AREA |
| Heated Sq Ft | 1894.1 sq ft. |
| Garage Sq Ft | 616.7 sq ft. |
| Covered Porch Sq Ft | 251.0 sq ft. |
| Treated Deck Sq Ft | 193.7 sq ft. |