

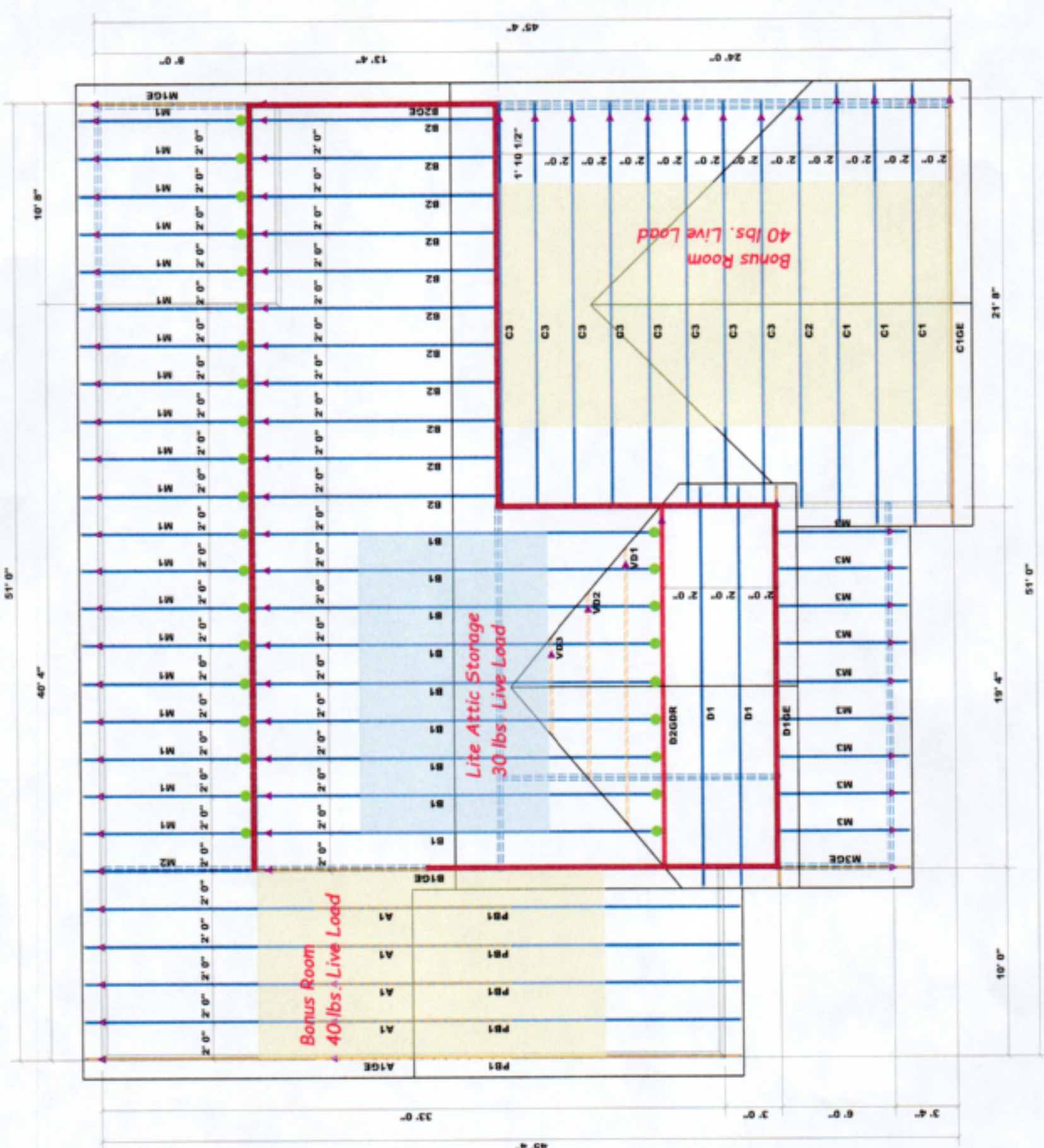
COMTECH TRUSSES & BEAMS
 CURTIS QUICK
 CURTIS QUICK

LOAD CHART FOR Z-TRUSS

SPAN (ft)	HEIGHT (ft)	WIND UPLIFT (psf)	WIND DOWN (psf)	DEAD (psf)	LIVE (psf)	MAXIMUM WEIGHT (lb)
10	10	10	10	10	10	10000
12	12	12	12	12	12	12000
14	14	14	14	14	14	14000
16	16	16	16	16	16	16000
18	18	18	18	18	18	18000
20	20	20	20	20	20	20000
22	22	22	22	22	22	22000
24	24	24	24	24	24	24000
26	26	26	26	26	26	26000
28	28	28	28	28	28	28000
30	30	30	30	30	30	30000

BUILDER	Southern Touch Homes	CITY / CO.	Rowlett Club Rd. Harnett Co. / Harnett
JOB NAME	Rowlett Club Rd.	ADDRESS	Rowlett Club Rd.
PLAN	The Reagon	MODEL	Model
SEAL DATE	10/17/18	DATE REV.	06/02/20
QUOTE #	Quote #	DRAWN BY	Curtis Quick
JOB #	J0620-2472	SALES REP.	Lenny Norris

THIS IS A TRUSS PLACEMENT DRAWING. It is not a structural drawing. It is intended to show the location of the trusses and beams in the building. It is not intended to be used for construction. The trusses and beams are shown in blue. The walls are shown in red. The floor is shown in yellow. The roof is shown in green. The trusses are shown in blue. The beams are shown in blue. The walls are shown in red. The floor is shown in yellow. The roof is shown in green.



HANGER LEGEND
 ● = USP HUS26 / Single 2x Hanger

Hatch Legend
 ■ 2nd Floor Bearing Walls @ 8' 1-1/2"
 ■ Truss Placement Plan
 SCALE: 1/4" = 1'

▲ = Denotes Left End of Truss
 (Reference Engineered Truss Drawing)
 Do Not Erect Trusses Backwards

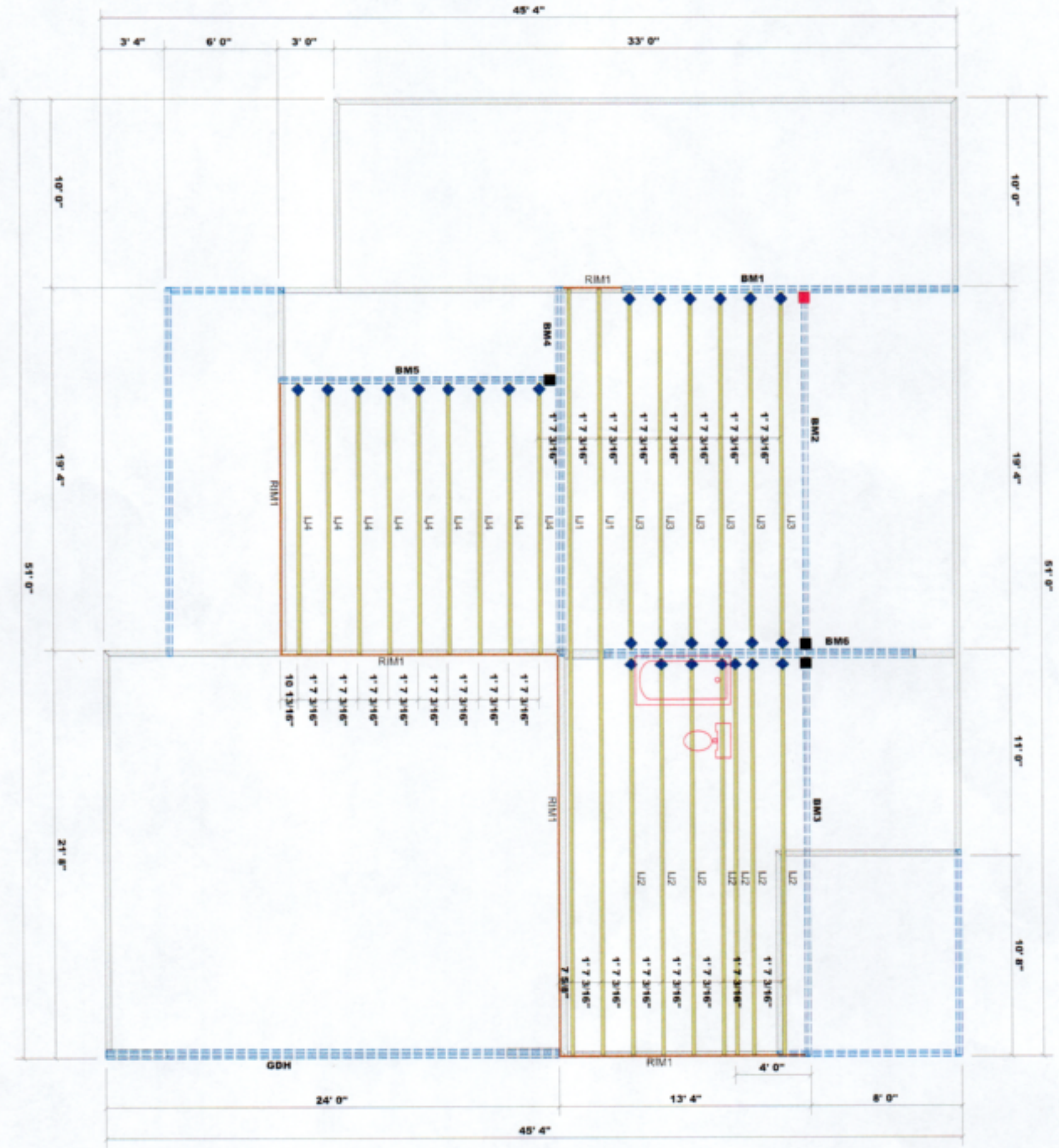
Curtis Quick
Curtis Quick
Curtis Quick

LOAD CHART FOR JACK STUDS

SPACING ON CENTERLINE OF STUD

Truss Depth	Truss Spacing	Max. Load (lb)
12' 0"	4' 0"	12,000
12' 0"	6' 0"	8,000
12' 0"	8' 0"	6,000
12' 0"	10' 0"	4,800
12' 0"	12' 0"	3,600
12' 0"	14' 0"	2,400
12' 0"	16' 0"	1,800
12' 0"	18' 0"	1,200
12' 0"	20' 0"	900
12' 0"	24' 0"	600

BUILDER	Southern Touch Homes	CITY / CO.	Harnett Co. / Harnett
JOB NAME	Rawls Club Rd.	ADDRESS	Rawls Club Rd.
PLAN	The Reagon	MODEL	Model
SEAL DATE	10/17/18	DATE REV.	06/02/20
QUOTE #	Quote #	DRAWN BY	Curtis Quick
JOB #	J0620-2473	SALES REP.	Lenny Norris



I-Joist Legend

PlotID	Length	Product	Pieces	Net Qty
IJ1	42' 0"	14" NJ-40x	1	2
IJ2	22' 0"	14" NJ-40x	1	7
IJ3	20' 0"	14" NJ-40x	1	6
IJ4	16' 0"	14" NJ-40x	1	9
RIM1	12' 0"	1 1/8" x 14" Rim Board	1	6
		Web Strengtheners (14" NJ-40x)	1	56

HANGER LEGEND

■	= USP THD410 / Double Beam Hanger
■	= USP THD412 / Heavy Double Beam Hanger

Truss Placement Plan
 SCALE: 1/4" = 1'

Beam Legend

PlotID	Length	Product	Pieces	Net Qty
BM3	22' 0"	1-3/4" x 14" LVL Kerto-S	2	2
BM2	20' 0"	1-3/4" x 14" LVL Kerto-S	2	2
BM4	20' 0"	1-3/4" x 14" LVL Kerto-S	3	3
BM1	18' 0"	1-3/4" x 14" LVL Kerto-S	2	2
BM5	15' 0"	1-3/4" x 14" LVL Kerto-S	2	2
GDH	24' 0"	1-3/4" x 18" LVL Kerto-S	3	3
BM6	17' 0"	1-3/4" x 18" LVL Kerto-S	3	3

These trusses are designed for residential use. They are not to be used for commercial or industrial use. The designer is not responsible for the proper installation of these trusses. The designer is not responsible for the proper installation of these trusses. The designer is not responsible for the proper installation of these trusses.