

MULTIPLE MEMBER CONNECTIONS FOR TOP-LOADED BEAMS (1)

1 1/2" Wide Pieces:

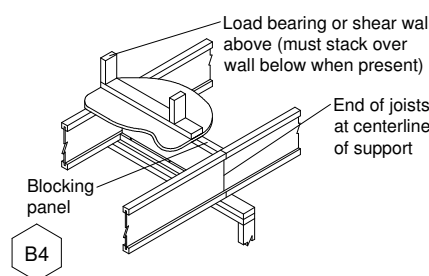
- Minimum of 2 rows (2x12 @ 12" x 21 nails at 12" o.c.
- Minimum of 4 rows (2x12 @ 12" x 21 nails at 12" o.c. and 2x12 @ 12" x 21 nails at 12" o.c.)
- Use 1/2" end blocking beams.

3 1/2" Wide Pieces:

- Minimum of 2 rows (3x12 @ 12" x 21 nails at 12" o.c. and 3x12 @ 12" x 21 nails at 12" o.c.)
- Use 1/2" end blocking beams.

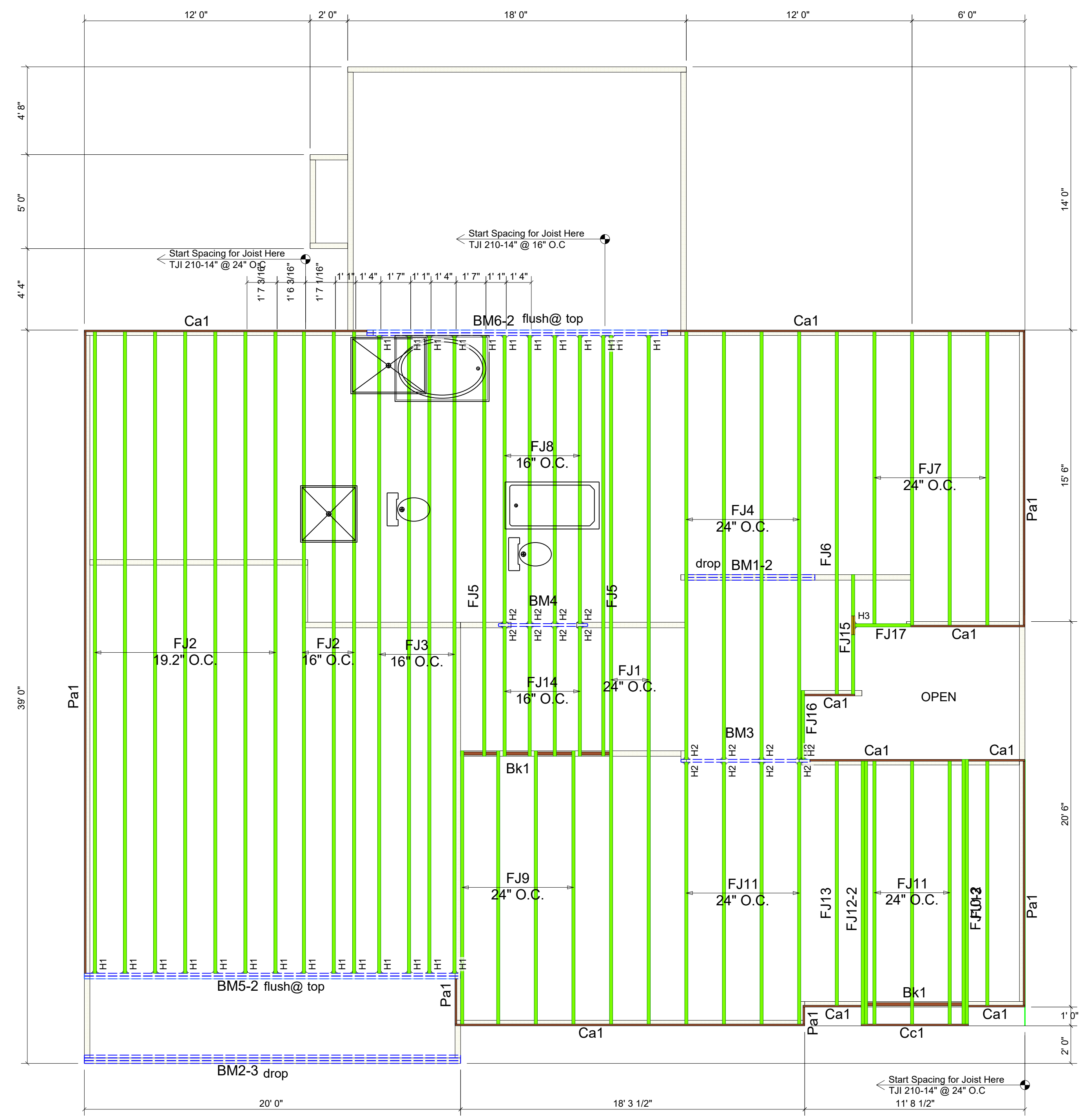
(1) Load must be applied evenly across entire beam width. Otherwise, use connections for side-loaded beams.

Additional nailing or bolting may be required with side-loaded multiple member beams. Refer to current product literature.



Blocking Panel

Part No.	Qty	Material	Notes
BK1	1	2x12	Blocking Panel
BK2	1	2x12	Blocking Panel
BK3	1	2x12	Blocking Panel
BK4	1	2x12	Blocking Panel
BK5	1	2x12	Blocking Panel
BK6	1	2x12	Blocking Panel
BK7	1	2x12	Blocking Panel
BK8	1	2x12	Blocking Panel
BK9	1	2x12	Blocking Panel
BK10	1	2x12	Blocking Panel
BK11	1	2x12	Blocking Panel
BK12	1	2x12	Blocking Panel
BK13	1	2x12	Blocking Panel
BK14	1	2x12	Blocking Panel
BK15	1	2x12	Blocking Panel
BK16	1	2x12	Blocking Panel
BK17	1	2x12	Blocking Panel
BK18	1	2x12	Blocking Panel
BK19	1	2x12	Blocking Panel
BK20	1	2x12	Blocking Panel



Products					
PlotID	Length	Product	Plies	Net Qty	Fab Type
FJ1	37' 0"	14" TJI@ 210	1	2	MFD
FJ2	34' 6"	14" TJI@ 210	1	10	MFD
FJ3	34' 0"	14" TJI@ 210	1	4	MFD
FJ4	23' 0"	14" TJI@ 210	1	4	MFD
FJ5	22' 6"	14" TJI@ 210	1	2	MFD
FJ6	19' 6"	14" TJI@ 210	1	1	MFD
FJ7	16' 0"	14" TJI@ 210	1	4	MFD
FJ8	15' 6"	14" TJI@ 210	1	4	MFD
FJ9	15' 0"	14" TJI@ 210	1	4	MFD
FJ10-2	14' 6"	14" TJI@ 210	2	2	MFD
FJ11	14' 0"	14" TJI@ 210	1	7	MFD
FJ12-2	14' 0"	14" TJI@ 210	2	2	MFD
FJ13	13' 0"	14" TJI@ 210	1	2	MFD
FJ14	7' 0"	14" TJI@ 210	1	4	MFD
FJ15	6' 6"	14" TJI@ 210	1	1	MFD
FJ16	4' 0"	14" TJI@ 210	1	1	MFD
FJ17	3' 0"	14" TJI@ 210	1	1	MFD
BM1-2	8' 0"	1 3/4" x 9 1/4" 2.0E Microllam@ LVL	2	2	FF
BM2-3	20' 0"	1 3/4" x 11 7/8" 2.0E Microllam@ LVL	3	3	FF
BM3	8' 0"	1 3/4" x 14" 2.0E Microllam@ LVL	1	1	FF
BM4	6' 0"	1 3/4" x 14" 2.0E Microllam@ LVL	1	1	FF
BM5-2	20' 0"	1 3/4" x 24" 2.0E Microllam@ LVL	2	2	FF
BM6-2	16' 0"	1 3/4" x 24" 2.0E Microllam@ LVL	2	2	FF
Ca1	16' 0"	1 1/8" x 14" TJI@ Rim Board	1	5	FF
Cc1	16' 0"	1 1/8" x 14" TJI@ Rim Board	1	1	FF
Pa1	16' 0"	1 1/8" x 14" TJI@ Rim Board	1	5	FF
Bk1	2' 0"	14" TJI@ 210	1	11	FF

Connector Summary							
PlotID	Qty	Manuf	Product	Flange	Top Nails	Web Stiff	Slope
H1	26	Simpson	ITS2.06/14	None	4-10d	No	-
H2	17	Simpson	ITS2.06/14	None	4-10dx1.5	No	-
H3	1	Simpson	ITS2.06/14	None	4-10dx1.5	No	-

Second Floor System Layout Scale: 1/4" = 1'-0"

Architectural Drawings Prepared By:
Enter Architect Info (or erase this text)

Original Plan Date: Enter Original Plan Date

Latest Revision: Enter Latest Revision Date

TECHNICAL SUPPORT
Clemmons, NC - (336) 726-2191
Raleigh, NC - (919) 838-2675
Rock Hill, SC - (803) 323-1650
Tucker, GA - (770) 492-1867

DAN RYAN

LOT 34 OLDE MILL VILLAGE

STONEFIELD

ELEVATION 7

Release Date: 12/30/2020

Job #: Enter Job #

Job #

Enter Job #

Drawn By: JASON

Misc #

Misc #

REV.	BY	DATE	COMMENTS
XXX		###/###/##	Original System Layout

SALES PRESENTATION DRAWING

This layout and associated materials list has been prepared based on project plans and/or information provided to Stock Building Supply by the builder, architect, engineer of record, or other responsible persons to review this information to assure that it is appropriate, accurate, complete and complies with applicable building codes.

Sheet 2 of 2