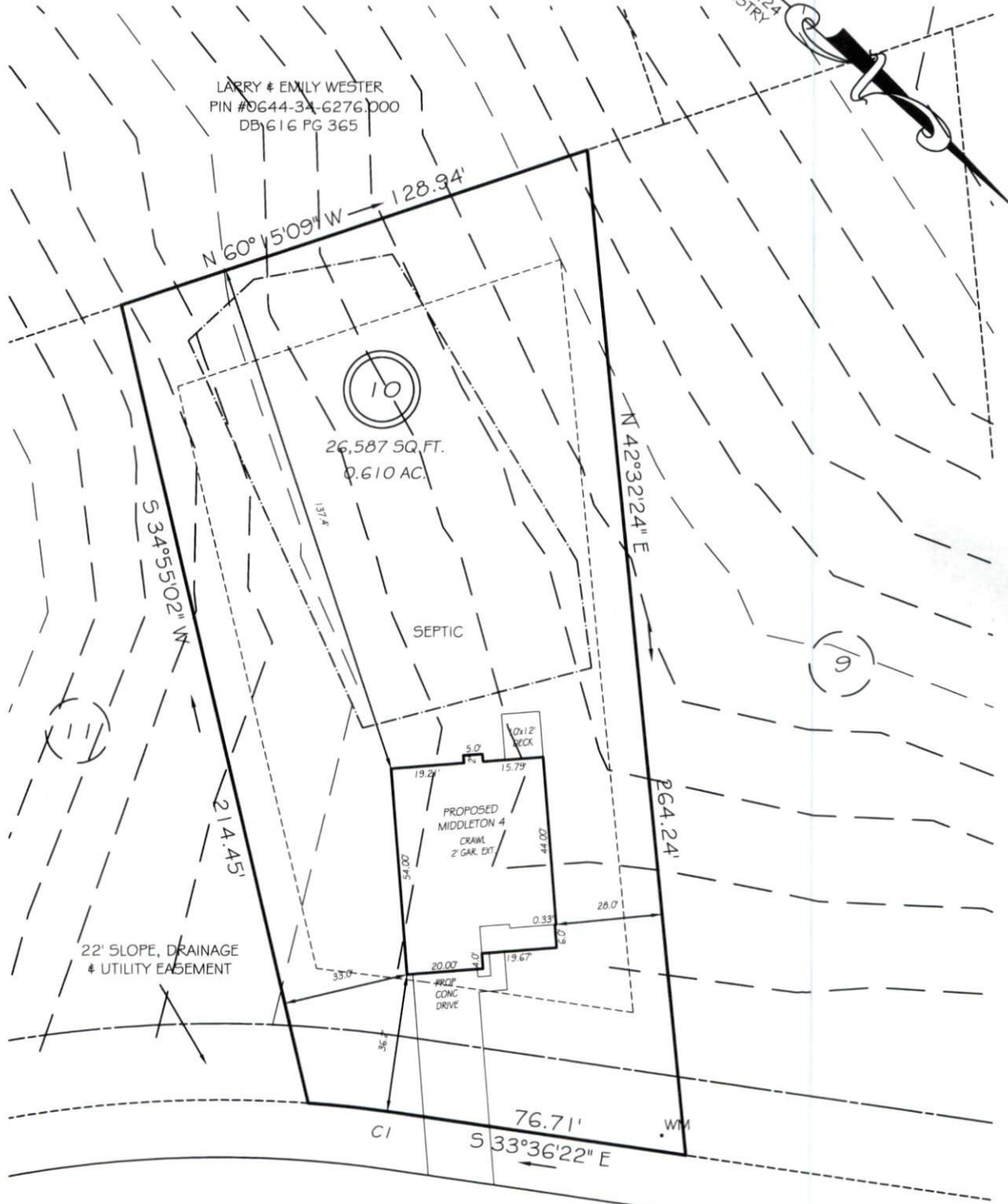


I, MICHAEL P. GRIFFIN, certify that under my direction and supervision this map was drawn from an actual field survey; that the error of closure of the survey as calculated by coordinates is 1: 10,000+; that the area shown hereon was calculated by coordinates.

Witness my hand and seal this day of MONTH 2020.

BK 2019 PGS 421-424
HARNETT CO. REGISTRY

LARRY & EMILY WESTER
PIN #0644-34-6276.000
DB# 616 PG 365



IMPERVIOUS AREAS	
HOUSE	2088 SQ. FT.
DRIVE & WALKS	723 SQ. FT.
PATIO	000 SQ. FT.
TOTAL	2811 SQ. FT.
ALLOWED	3250 SQ. FT.

SETBACKS	
FRONT	35'
REAR	25'
SIDE	10'
CORNER SIDE	20'

CI R=325.00' L=23.31' S35°39'39"E 23.31'

PRELIMINARY
NOT FOR RECORDATION,
SALES OR CONVEYANCE

LEGEND

- EIP EXISTING IRON PIPE
- IPS IRON PIPE SET
- RW RIGHT OF WAY
- N/F NOW OR FORMERLY
- EIS EXISTING IRON STAKE
- FES FLARED END SECTION
- WM WATER METER
- CO CLEAN OUT
- FH FIRE HYDRANT
- CB CATCH BASIN

