

ABBREVIATIONS

- ACC. = ACCESS
- BWL = BRACED WALL LINE
- BWP. = BRACED WALL PANEL
- C.O. = CASSED OPENING
- C.J. = CEILING JOIST
- CLOS. = CLOSET
- COL. = COLUMN
- COMP. = COMPOSITION
- CONC. = CONCRETE
- CONT. = CONTINUOUS
- C.M.A. = CARBON MONOXIDE ALARM
- C.M.U. = CONCRETE MASONRY UNIT
- D.H. = DOUBLE HUNG
- DIA. = DIAMETER
- D.J. = DOUBLE JOIST
- DN. = DOWN
- EXH. = EXHAUST
- EXT. = EXTERIOR
- FL.J. = FLOOR JOIST
- FTG. = FOOTING
- G.F.I. = GROUND FAULT INTERRUPTER
- H.B. = HOSE BIB
- LVL. = LAMINATED VENEER LUMBER
- M.O. = MASONRY OPENING
- MAS. = MASONRY
- MAX. = MAXIMUM
- M.C. = MEDICINE CABINET
- MTL. = METAL
- MIN. = MINIMUM
- O.C. = ON CENTER
- OSB = ORIENTED STRAND BOARD
- PERF. = PERFORATED
- REC. = RECESSED
- REINF. = REINFORCED
- SCR. = SCREENED
- S.D. = SMOKE DETECTOR
- SEC. = SECOND
- SHWR. = SHOWER
- S.Y.P. = SOUTHERN YELLOW PINE
- S.P.F. = SPRUCE/PINE/FIR
- SUSP. = SUSPENDED
- TYP. = TYPICAL
- U.O.N. = UNLESS OTHERWISE NOTED
- WASH. = WASHER
- W.H. = WATER HEATER
- W.P. = WEATHER PROOF
- W.W.M. = WELDED WIRE MESH
- WDW. HT. = WINDOW HEIGHT
- WD. = WOOD

SYMBOLS

- = HOSE BIB
- s = SWITCH
- 3 = 3-WAY SWITCH
- ◇ = LIGHT FIXTURE
- ⊞ = EXHAUST FAN & LIGHT
- ⊞ = SMOKE DETECTOR
- △ = SHOWER HEAD
- ◀ = TELEPHONE JACK
- ⊕ = CONVENIENCE OUTLET
- ⊕ = 220 VOLT OUTLET
- ⊕ = GROUND FAULT INTERRUPTER
- ⊕ = CEILING FAN
- ⊕ = CARBON MONOXIDE ALARM

GENERAL NOTES AND SPECIFICATIONS

COPYRIGHT

THIS PLAN IS PROTECTED UNDER THE FEDERAL COPYRIGHT ACT. REPRODUCTION IN WHOLE OR IN PART, INCLUDING DIRECT COPYING AND/OR PREPARATION OF DERIVATIVE WORKS, FOR ANY REASON WITHOUT THE PRIOR WRITTEN CONSENT FROM STANDARD HOMES PLAN SERVICE, INC. IS STRICTLY PROHIBITED.

ORIGINAL PURCHASE AGREEMENT

SEE ATTACHED CONSTRUCTION LICENSE FOR INVOICE NUMBER 13105.

BUILDING CODE INFORMATION

THIS PLAN HAS BEEN DRAWN TO CONFORM TO THE NORTH CAROLINA RESIDENTIAL CODE, 2018 EDITION (2018 INTERNATIONAL RESIDENTIAL CODE FOR ONE- AND TWO-FAMILY DWELLINGS, CURRENT EDITION) WITH AMENDMENTS UNLESS OTHERWISE NOTED. (SEE ATTACHMENTS)

PRIOR TO CONSTRUCTION

THE CONTRACTOR SHALL REVIEW THE PLAN(S) FOR THIS PARTICULAR BUILDING PROJECT TO ENSURE COMPLIANCE WITH ALL NATIONAL, STATE AND LOCAL CODES, CLIMATIC GEOGRAPHIC DESIGN CRITERIA, AND ANY OTHER PROVISIONS THAT MAY BE REQUIRED BY VA/FHA/RD.

THE CONTRACTOR SHALL VERIFY PLAN DIMENSIONS, STRUCTURAL COMPONENTS, AND GENERAL SPECIFICATIONS CONTAINED IN THIS SET OF PLANS AND REPORT ANY DISCREPANCIES TO STANDARD HOMES PLAN SERVICE, INC. FOR JUSTIFICATION OR CORRECTION BEFORE PROCEEDING WITH WORK ON HOUSE.

THE CONTRACTOR SHALL DETERMINE ROUGH OPENING SIZES FOR ALL BUILT-IN EQUIPMENT AND/OR FACILITIES AND ADJUST PLAN DIMENSIONS AS REQUIRED.

DO NOT SCALE FROM BLUEPRINTS. REFER TO THE LABELED DIMENSIONS FOR ACTUAL MEASUREMENTS.

IT SHALL BE THE RESPONSIBILITY OF THE OWNER/BUILDER TO PROVIDE FOR THE SERVICES OF A PROFESSIONAL ENGINEER IF REQUIRED BY THE BUILDING CODE OFFICIAL.

SHIPPING DATE : _____

STAMP MUST APPEAR IN RED. PLANS FOR WHICH A BUILDING PERMIT HAS NOT BEEN OBTAINED ONE YEAR FROM THE ABOVE DATE IS SUBJECT TO REVIEW BY STANDARD HOMES PLAN SERVICE, INC. A FEE MAY BE CHARGED FOR THIS SERVICE.

EXCAVATION

EXCAVATE TO UNDISTURBED SOIL. BOTTOM OF FOOTING SHALL EXTEND BELOW LOCAL FROST LINE AND TO A MINIMUM DEPTH OF 12" BELOW ADJACENT GRADE. (PRESUMED 2000 PSF SOIL BEARING CAPACITY).

EXPANSIVE, COMPRESSIVE OR SHIFTING SOILS SHALL BE REMOVED TO A DEPTH AND WIDTH SUFFICIENT TO ASSUME A STABLE MOISTURE CONTENT IN EACH ACTIVE ZONE.

FOUNDATION

PROVIDE 1/2" DIA. STEEL ANCHOR BOLTS 6'-0" O.C., 1'-0" MAX. FROM CORNERS AND 1'-0" MAX. FROM ENDS OF EACH PLATE SECTION, WITH 7" MIN. EMBEDMENT.

PROVIDE FOUNDATION WATERPROOFING AND DRAIN WITH POSITIVE SLOPE TO OUTLET AS REQUIRED BY SITE CONDITIONS.

SLOPE GRADE AWAY FROM FOUNDATION WALLS 6" MINIMUM WITHIN THE FIRST 10 FEET.

PROVIDE PRESSURE TREATED LUMBER FOR SILLS, PLATES, BANDS AND ANY LUMBER IN CONTACT WITH MASONRY.

PROVIDE APPROVED AND BONDED CHEMICAL SOIL TREATMENT AGAINST FUNGUS, TERMITES AND OTHER HARMFUL INSECTS.

CRAWL SPACE

ALL GIRDER JOINTS AND ENDS OF GIRDERS SHALL REST ON SOLID BEARINGS. FILL CORES OF HOLLOW MASONRY TO FOOTING WITH CONCRETE. FILL TOP COURSE CORES OF EXTERIOR FOUNDATION WALL WITH CONCRETE.

FOOTINGS SHALL EXTEND 6" AND SHALL BE 12" THICK UNDER GIRDER PIERS.

CHIMNEY FOOTING SHALL EXTEND 12" MINIMUM BEYOND EACH SIDE AND SHALL BE AT LEAST 12" THICK.

BASEMENT

ALL GIRDER JOINTS SHALL BREAK ON COLUMN CENTER LINES (STAGGERED) AND ENDS OF GIRDERS SHALL REST ON SOLID MASONRY.

DOUBLE SILL AND USE LEDGER OVER ALL BASEMENT OPENINGS.

ALL BASE. SASH SHALL BE 18/20 2-LT. 3'-3 7/8" X 1'-11 15/16" 3420 HB.

FRAMING

ALL FLOOR JOISTS, CEILING JOISTS, RAFTERS, GIRDERS, HEADERS, SILLS AND BEAMS SHALL BE NO. 2 SPRUCE/PINE/FIR (S.P.F.) UNLESS OTHERWISE INDICATED.

ALL LOAD BEARING WALLS SHALL BE STUD GRADE SPRUCE/PINE/FIR (S.P.F.) UNLESS OTHERWISE INDICATED.

DESIGN SPECIFICATIONS FOR LAMINATED VENEER LUMBER (LVL)

BEAMS AND HEADERS : GRADE : 2950F-2.0E
BENDING Fb : 2950
MOE : 2.0 X 10⁶
SHEAR Fv : 290

SUPPORT FOR HEADERS:

HEADERS SHALL BE SUPPORTED ON EACH END WITH ONE OR MORE JACK STUDS OR WITH APPROVED FRAMING ANCHORS IN ACCORDANCE WITH BUILDING CODE (SEE PLAN). THE FULL-HEIGHT STUD ADJACENT TO EACH END OF THE HEADER SHALL BE END NAILED TO EACH END OF THE HEADER WITH FOUR-160 NAILS. SEE TABLE BELOW.

MINIMUM NUMBER OF FULL HEIGHT STUDS AT EACH END OF HEADERS IN EXTERIOR WALLS:

| HEADER SPAN (FEET) | MAXIMUM STUD SPACING (INCHES) | |
|--------------------|-------------------------------|----|
| | 16 | 24 |
| 3 FEET OR LESS | 1 | 1 |
| 4 FT. | 2 | 1 |
| 8 FT. | 3 | 2 |
| 12 FT. | 5 | 3 |
| 16 FT. | 6 | 4 |

CLIMATIC AND GEOGRAPHICAL DESIGN CRITERIA

ROOF LIVE LOAD (POUNDS PER SQUARE FOOT) : 20 PSF
ULTIMATE DESIGN WIND SPEED (MILES PER HOUR) : 120 MPH
NOMINAL DESIGN WIND SPEED : 93 MPH
EXPOSURE CATEGORY "B" UNLESS OTHERWISE NOTED
WINDOW DESIGN PRESSURE RATING : DP 25
COMPONENT AND CLADDING LOADS FOR A BUILDING WITH A MEAN ROOF HEIGHT OF 30 FEET OR LESS:

| PRESSURE ZONE | ULTIMATE DESIGN WIND SPEED (MPH) | | | |
|---------------|----------------------------------|-------------|-------------|-------------|
| | 115 | 120 | 130 | 140 |
| ZONE 1 | 13.1, -14.0 | 14.2, -15.0 | 16.7, -18.0 | 19.4, -21.0 |
| ZONE 2 | 13.1, -18.0 | 14.2, -18.0 | 16.7, -21.0 | 19.4, -24.0 |
| ZONE 3 | 13.1, -18.0 | 14.2, -18.0 | 16.7, -21.0 | 19.4, -24.0 |
| ZONE 4 | 14.3, -18.0 | 15.5, -16.0 | 18.2, -19.0 | 21.2, -22.0 |
| ZONE 5 | 14.3, -19.0 | 15.5, -20.0 | 18.2, -24.0 | 21.2, -28.0 |

ASSUMED MEAN ROOF HEIGHT: 17'-6"

SEISMIC CONDITION BY ZONE : ZONES A AND B

SUBJECT TO DAMAGE FROM WEATHERING : MODERATE

CLIMATE ZONES (UNLESS OTHERWISE NOTED): ZONES 3 AND 4

MINIMUM VALUES FOR ENERGY COMPLIANCE:
CEILING R-38; EXTERIOR WALLS R-15; CRAWL WALL R-10
WINDOW U-FACTOR ≤ 0.35; RECOMMENDED SHGC ≤ 0.30

MISCELLANEOUS

LOCATE ALL CONVENIENCE OUTLETS ABOVE KITCHEN BASE CABINETS 42" ABOVE FINISHED FLOOR.

EMERGENCY EGRESS REQUIREMENTS

IT SHALL BE THE RESPONSIBILITY OF THE OWNER/BUILDER TO VERIFY CONFORMITY WITH EGRESS REQUIREMENTS BASED ON SPECIFICATIONS PROVIDED BY WINDOW MANUFACTURER.

2018 NORTH CAROLINA RESIDENTIAL CODE

THE REQUIRED EGRESS WINDOW FROM EVERY SLEEPING ROOM SHALL HAVE A SILL HEIGHT OF NOT MORE THAN 44 INCHES ABOVE FINISHED FLOOR. THE NET CLEAR OPENING SHALL NOT BE LESS THAN 4.0 SQUARE FEET WHERE THE NET CLEAR OPENING HEIGHT SHALL BE AT LEAST 22 INCHES AND THE NET CLEAR OPENING WIDTH SHALL BE AT LEAST 20 INCHES. IN ADDITION THE MINIMUM TOTAL GLASS AREA SHALL NOT BE LESS THAN 5.0 SQUARE FEET IN THE CASE OF A GROUND STORY WINDOW AND NOT LESS THAN 5.7 SQUARE FEET IN THE CASE OF A SECOND STORY WINDOW.

2015 INTERNATIONAL RESIDENTIAL CODE

THE REQUIRED EGRESS WINDOW FROM EVERY SLEEPING ROOM SHALL HAVE A SILL HEIGHT OF NOT MORE THAN 44 INCHES ABOVE FINISHED FLOOR. ALL EMERGENCY ESCAPE AND RESCUE OPENINGS SHALL HAVE A MINIMUM NET CLEAR OPENING OF 5.7 SQUARE FEET EXCEPT GRADE FLOOR OPENINGS SHALL HAVE A MINIMUM NET OPENING OF 5 SQUARE FEET. THE MINIMUM NET CLEAR OPENING HEIGHT SHALL BE 24 INCHES. THE MINIMUM NET CLEAR OPENING WIDTH SHALL BE 20 INCHES

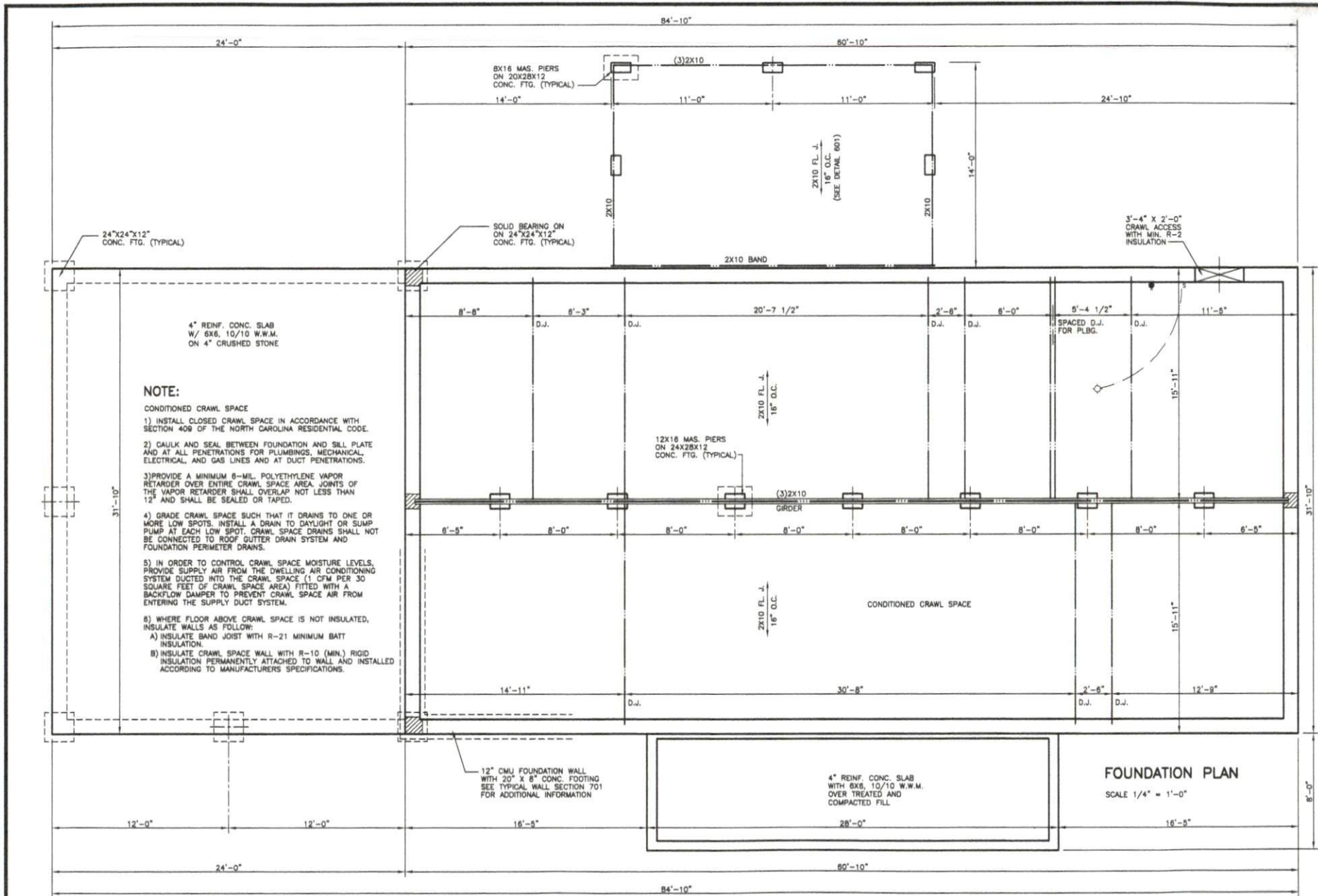
TRUSS CONSTRUCTION
REVISED 10-24-22

Standard Homes Plan Service, Inc.

2700 SUNSET LAKE ROAD FUQUAY-VARINA, NC 27526 (919)552-5677

SEE HOME DESIGN PREVIEWS ONLINE AT WWW.STANDARHHOMES.COM

| DESIGNED FOR | PLAN | NO. | MAT'L. | SHOWN | SH |
|-----------------------|-------|-----|--------|-------|-----|
| LINDA AND ELTON MOORE | SCOTT | 2 | B.V. | | 1 G |



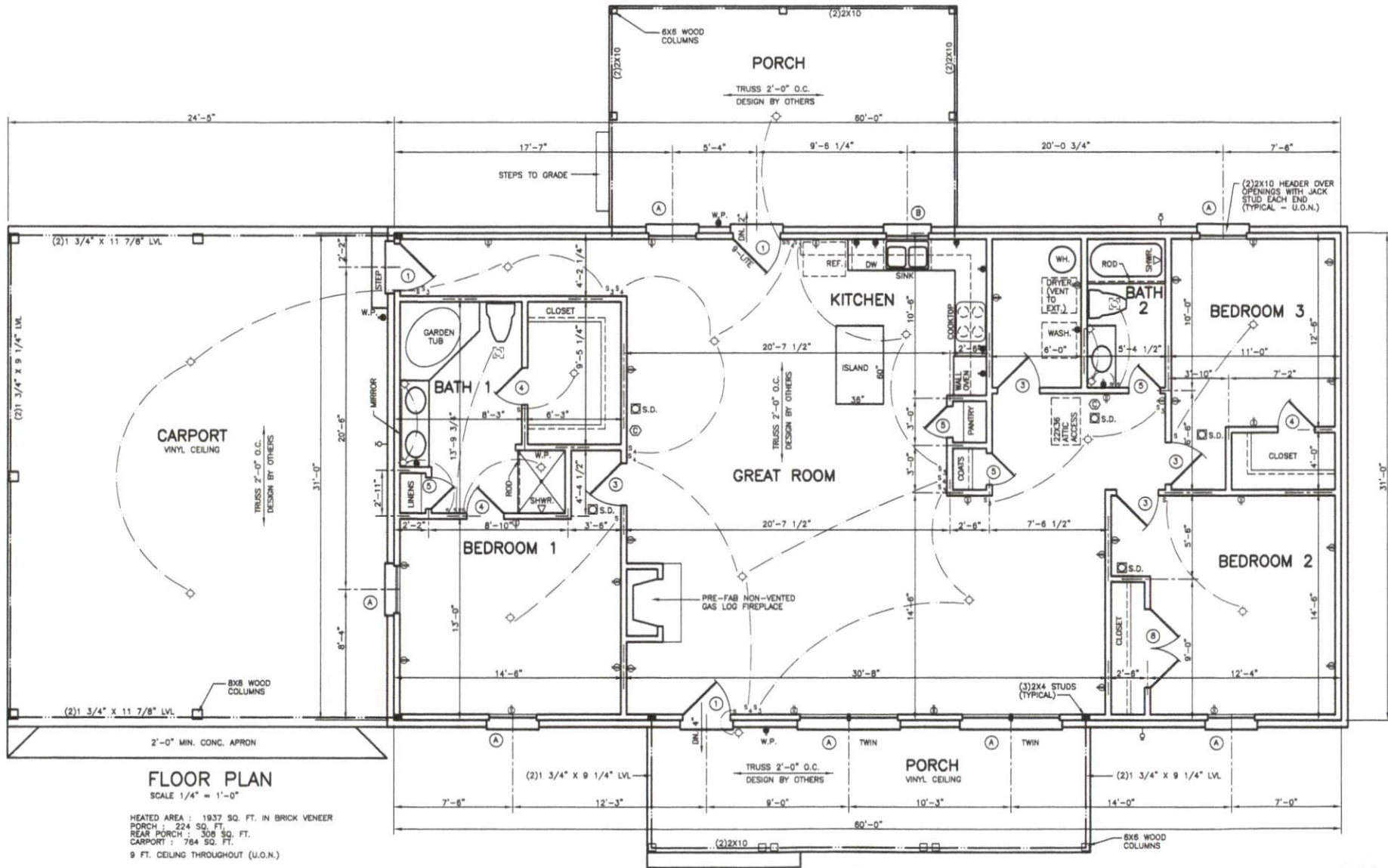
FOUNDATION PLAN
 SCALE 1/4" = 1'-0"

TRUSS CONSTRUCTION
 REVISED 10-24-22

Standard Homes Plan Service, Inc.

7200 SUNSET LAKE ROAD FUQUAY-VARINA, NC 27526 (919)552-5677
 SEE HOME DESIGN PREVIEWS ONLINE AT WWW.STANDARHHOMES.COM

| DESIGNED FOR | PLAN | NO. | MAT'L. | SHOWN | SH |
|-----------------------|-------|-----|--------|-------|-----|
| LINDA AND ELTON MOORE | SCOTT | 2 | B.V. | | 2 c |



FLOOR PLAN
SCALE 1/4" = 1'-0"

HEATED AREA : 1937 SQ. FT. IN BRICK VENEER
 PORCH : 224 SQ. FT.
 REAR PORCH : 306 SQ. FT.
 CARPORT : 764 SQ. FT.
 9 FT. CEILING THROUGHOUT (U.O.N.)

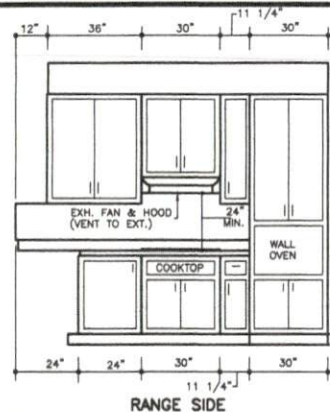
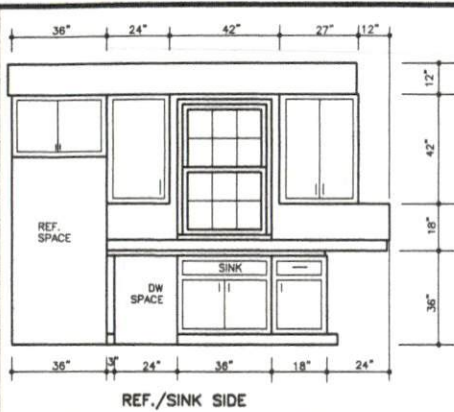
WINDOW SCHEDULE

| | | | | | | |
|---|------------------------|---|--|---|--|---|
| A | 3'-0" x 5'-2" WD. D.H. | D | | G | | L |
| B | 2'-8" x 4'-2" WD. D.H. | E | | H | | M |
| C | | F | | K | | N |

DOOR SCHEDULE

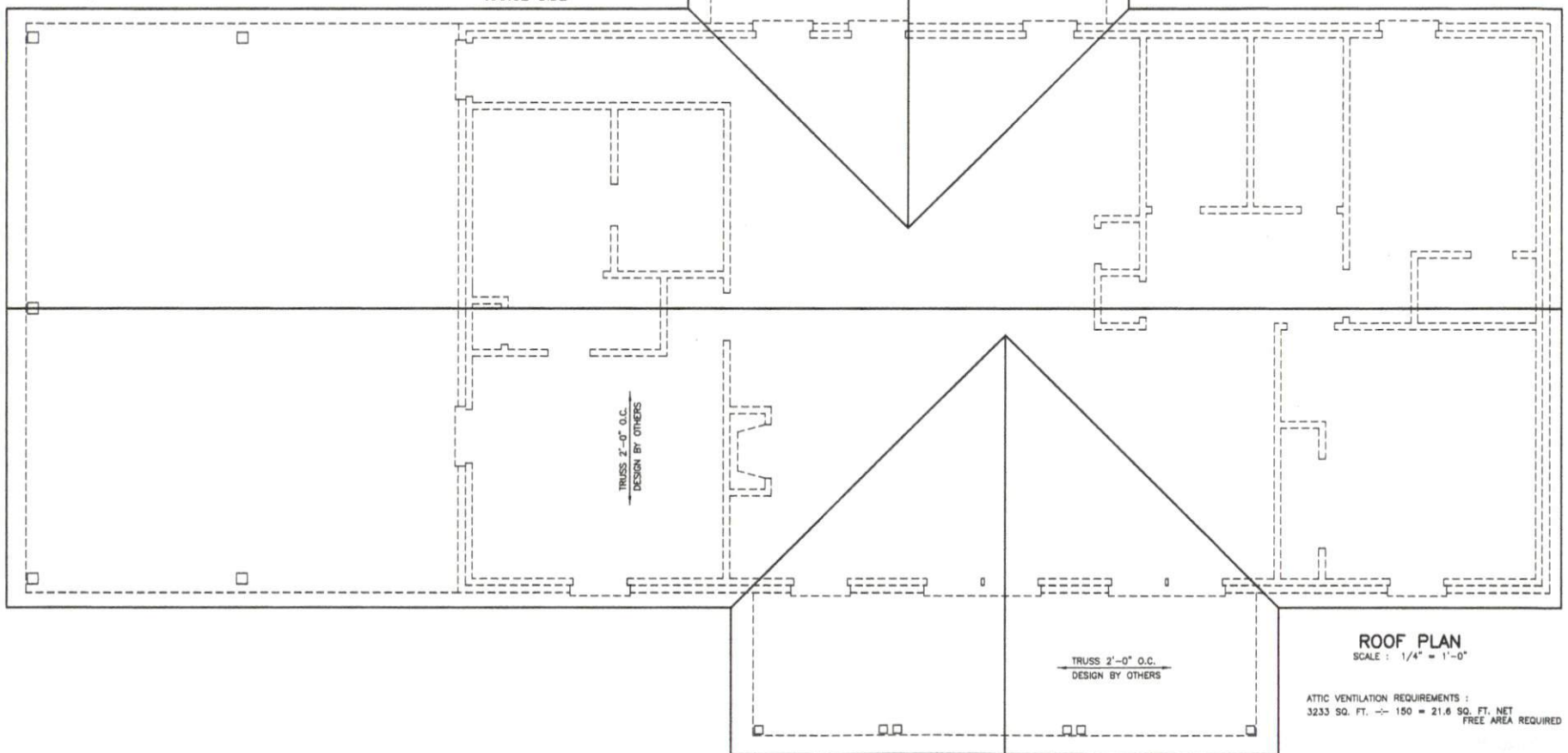
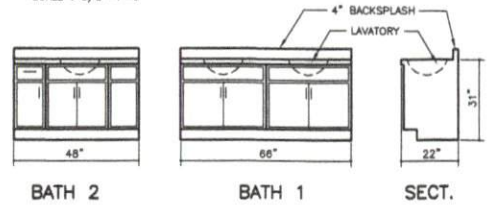
| | | | | | | | |
|---|------------------------|---|------------------------|---|--|----|--|
| 1 | 3'-0" x 6'-8" x 1 3/4" | 4 | 2'-4" x 6'-8" x 1 3/8" | 7 | BIFOLD 5'-0" x 6'-8" x 1 3/8" | 10 | |
| 2 | 2'-8" x 6'-8" x 1 3/4" | 5 | 2'-0" x 6'-8" x 1 3/8" | 8 | DOUBLE OPENING 5'-0" x 6'-8" x 1 3/8" | 11 | |
| 3 | 2'-8" x 6'-8" x 1 3/8" | 6 | 1'-8" x 6'-8" x 1 3/8" | 9 | | 12 | |

Standard Homes Plan Service, I
 7200 SUNSET LAKE ROAD FUYQUAY-VARINA, N.C. 27528 (919)552-
 DESIGNED FOR LINDA AND ELTON MOORE
 PLAN **SCOTT** NO. **2** MATERIAL **B.V.** 3 of 3
 © 2019 STANDARD HOMES PLAN INC.



KITCHEN CABINET ELEVATIONS
SCALE : 3/8"=1'-0"
FOR SECTION THRU CABINETS, SEE DETAIL ON COVER SHEET.

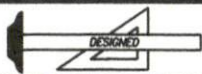
VANITY DETAILS
SCALE : 3/8"=1'-0"



ROOF PLAN
SCALE : 1/4" = 1'-0"

ATTIC VENTILATION REQUIREMENTS :
3233 SQ. FT. → 150 = 21.6 SQ. FT. NET
FREE AREA REQUIRED

TRUSS CONSTR
REVISED 10-24-

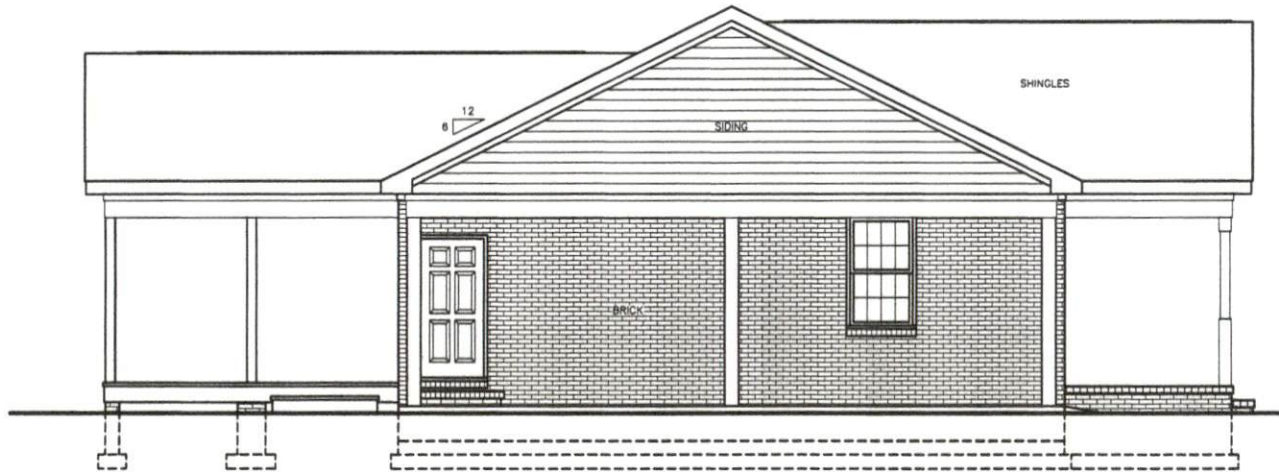


Standard Homes Plan Service, Inc.

7200 SUNSET LAKE ROAD FUQUAY-VARINA, NC 27526 (919)552-5677
SEE HOME DESIGN PREVIEWS ONLINE AT WWW.STANDARDHOMES.COM

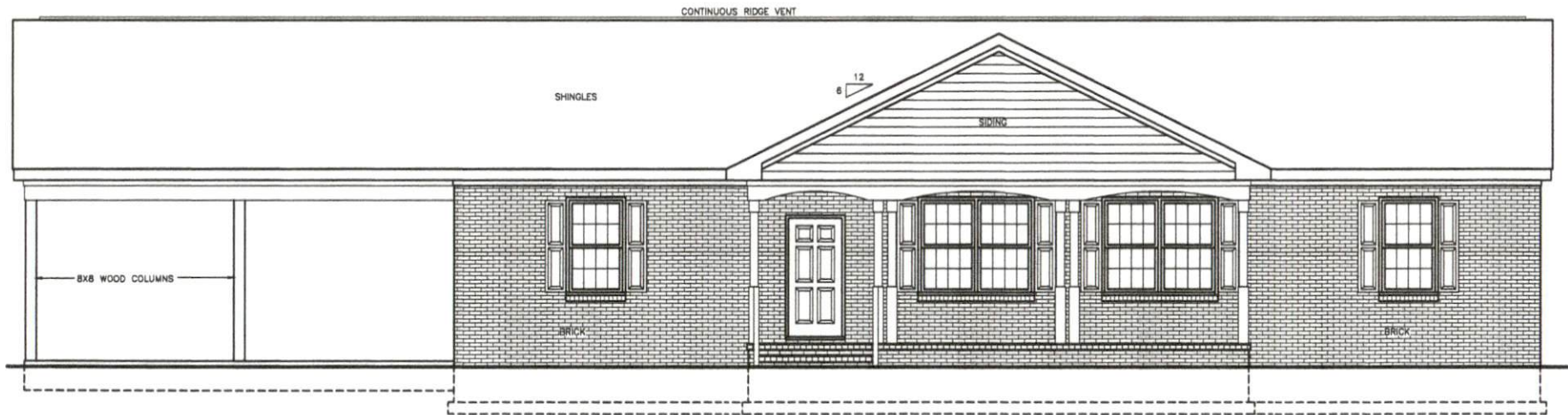


| DESIGNED FOR | PLAN | NO. | MAT'L | SHOWN | SH |
|-----------------------|-------|-----|-------|-------|-----|
| LINDA AND ELTON MOORE | SCOTT | 2 | B.V. | | 4.C |



PROVIDE GUTTERS, DOWNSPOUTS AND SPLASHPADS
 ACCORDING TO LOCAL CODE AND RAINFALL CONDITIONS.
 ALL SPLASHPADS SHALL CARRY WATER 60"
 FROM BUILDING.

LEFT SIDE ELEVATION



FRONT ELEVATION

SCALE 1/4" = 1'-0"

TRUES CONSTRUCTION
 REVISED 10-24-22

Standard Homes Plan Service, Inc.

7200 SUNSET LAKE ROAD FUQUAY-VARINA, NC 27526 (919)552-5677

SEE HOME DESIGN PREVIEWS ONLINE AT WWW.STANDARDHOMES.COM

DESIGNED FOR

LINDA AND ELTON MOORE

PLAN

SCOTT

NO.

2

MAT'L.

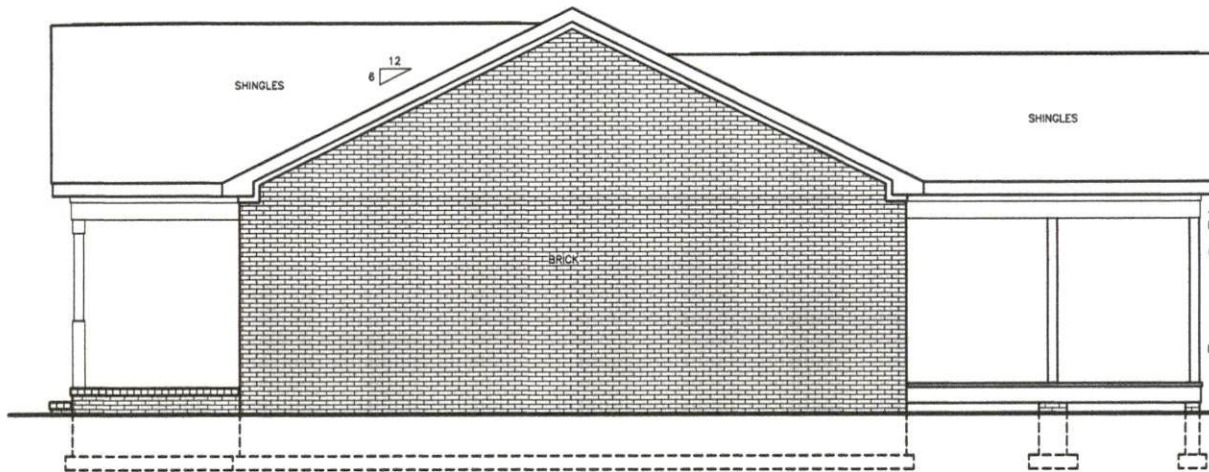
B.V.

SHOWN

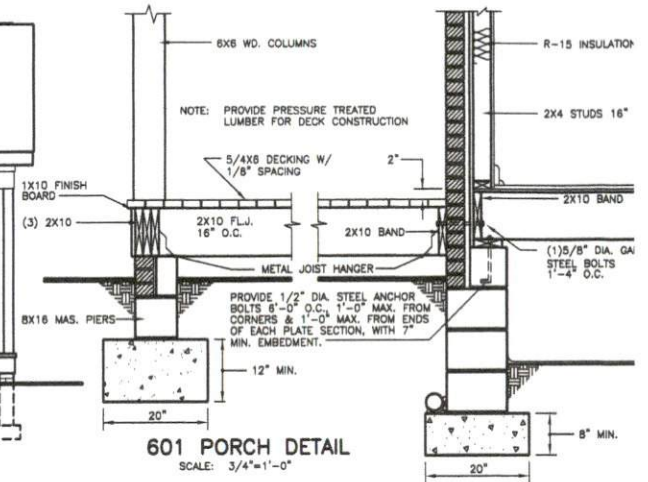
5 c

SH

© 2019 STANDARD HOMES PLAN



RIGHT SIDE ELEVATION



REAR ELEVATION
SCALE 1/4" = 1'-0"

TRUSS CONSTRUCT
REVISED 10-24-2

Standard Homes Plan Service, Inc.

7200 SUNSET LAKE ROAD FUQUAY-VARINA, NC 27526 (919)552-5677

SEE HOME DESIGN PREVIEWS ONLINE AT WWW.STANDARDHOMES.COM

DESIGNED FOR

LINDA AND ELTON MOORE

PLAN

SCOTT

NO.

2

MAT'L.

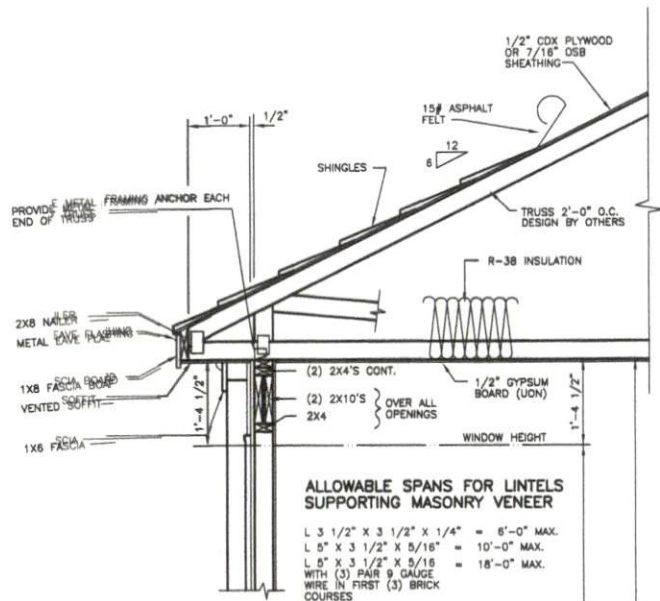
B.V.

SHOWN

SH

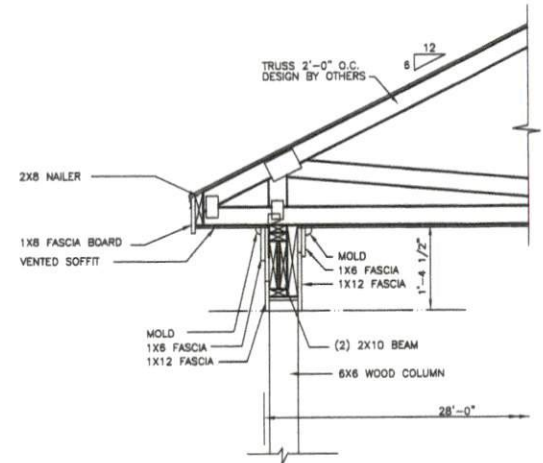
6 c

© 2018 STANDARD HOMES PLAN 58

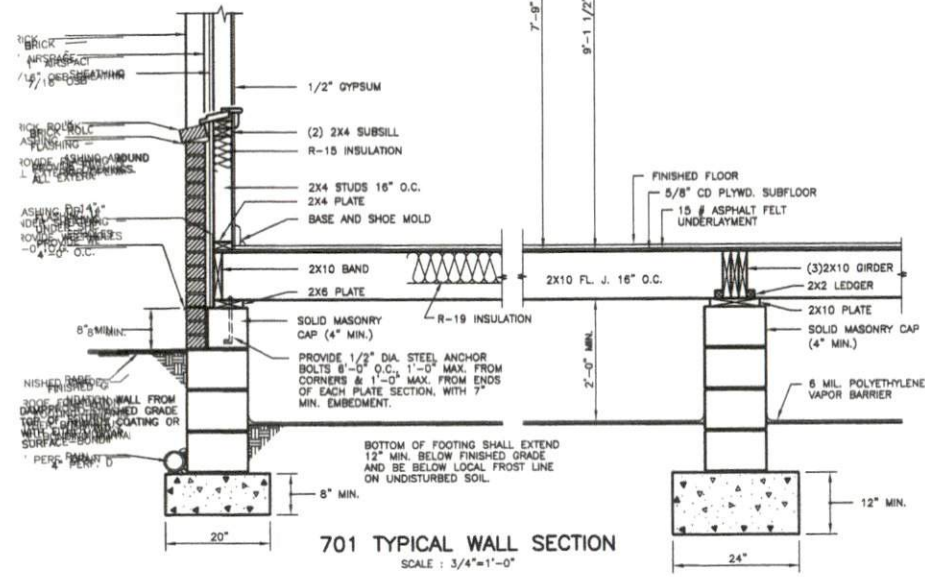


ALLOWABLE SPANS FOR LINTELS SUPPORTING MASONRY VENEER

L 3 1/2" X 3 1/2" X 1/4" = 6'-0" MAX.
 L 5" X 3 1/2" X 5/16" = 10'-0" MAX.
 L 5" X 3 1/2" X 9/16" = 18'-0" MAX.
 WITH (3) PAIR 9 GAUGE WIRE IN FIRST (3) BRICK COURSES



702 SECTION THRU FRONT PORCH
 SCALE: 3/4" = 1'-0"



701 TYPICAL WALL SECTION
 SCALE: 3/4" = 1'-0"

TRUSS CONSTRUCTION
 REVISED 10-24-22

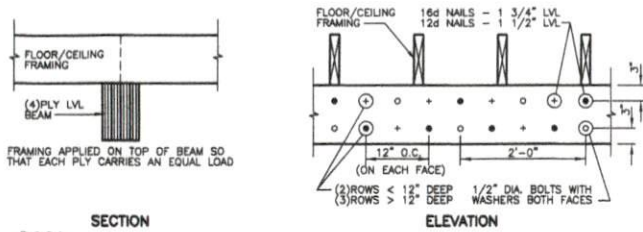
Standard Homes Plan Service, Inc.
 7200 SUNSET LAKE ROAD FUQUAY-VARINA, NC 27526 (919)552-5677



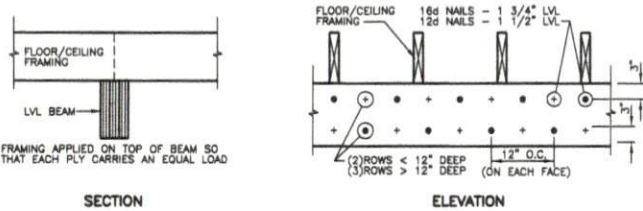
| DESIGNED FOR | PLAN | NO. | MAT'L. | SHOWN | SH |
|-----------------------|-------|-----|--------|-------|----|
| LINDA AND ELTON MOORE | SCOTT | 2 | B.V. | | 7c |

CONNECTION OF MULTIPLE PLY BEAMS

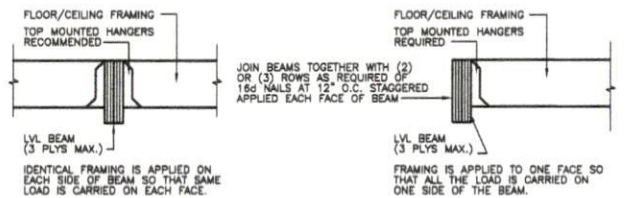
(INSTALLATION & CONNECTION OF BEAMS SHALL BE ACCORDING TO MANUFACTURERS SPECIFICATIONS)



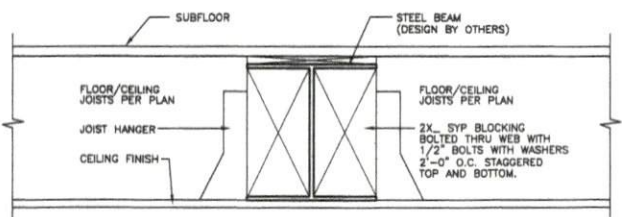
SECTION
D001
TOP LOADED (4 PILES)



SECTION
D002
TOP LOADED (3 PILES MAXIMUM)



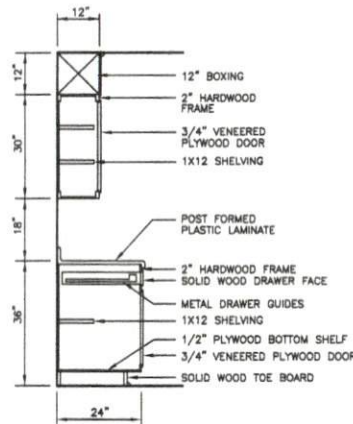
D003
SIDE LOADED



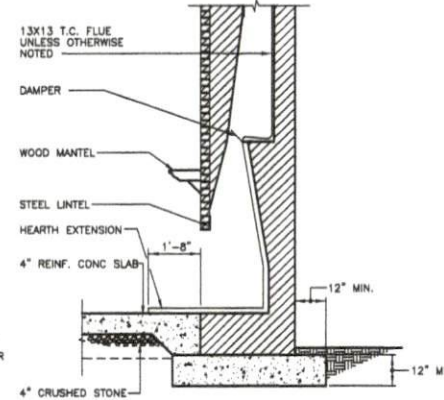
D004
SECTION THRU STEEL BEAM

| MINIMUM UNIFORMLY DISTRIBUTED LIVE LOADS (PSF) | |
|--|-----------|
| USE | LIVE LOAD |
| UNINHABITABLE ATTICS WITHOUT STORAGE | 10 |
| UNINHABITABLE ATTICS WITH LIMITED STORAGE | 20 |
| HABITABLE ATTICS AND ATTICS SERVED WITH FIXED STAIRS | 30 |
| BALCONIES AND DECKS | 40 |
| ROOMS OTHER THAN SLEEPING ROOMS | 40 |
| SLEEPING ROOMS | 30 |
| STAIRS | 40 |
| FIRE ESCAPES | 40 |
| GUARDS AND HANDRAILS | 200 |
| GUARD IN-FILL COMPONENTS | 50 |
| PASSENGER VEHICLE GARAGES | 50 |

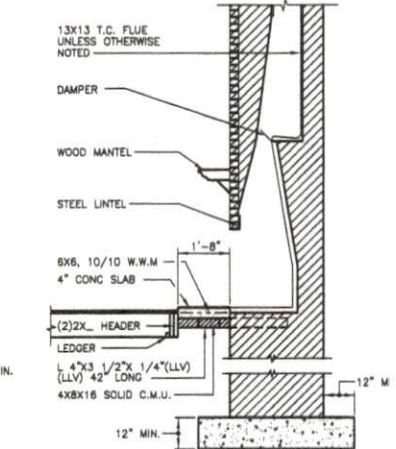
| ALLOWABLE DEFLECTION OF STRUCTURAL MEMBERS | |
|---|----------------------|
| (NOTE : L = SPAN LENGTH ; H = SPAN HEIGHT) | |
| STRUCTURAL MEMBER | ALLOWABLE DEFLECTION |
| RAFTERS HAVING SLOPES GREATER THAN 3:12 WITH FINISHED CEILING NOT ATTACHED TO RAFTERS | L/180 |
| FLOORS | L/360 |
| CEILING WITH BRITTLE FINISHES (INCLUDING PLASTER AND STUCCO) | L/360 |
| CEILING WITH FLEXIBLE FINISHES (INCLUDING GYPSUM BOARD) | L/240 |
| ALL OTHER STRUCTURAL MEMBERS | L/240 |
| LINTELS SUPPORTING MASONRY VENEER WALLS | L/600 |
| INTERIOR WALLS AND PARTITIONS | H/180 |
| EXTERIOR WALLS - WIND LOADS WITH PLASTER OR STUCCO FINISH | H/360 |
| EXTERIOR WALLS - WIND LOADS WITH OTHER BRITTLE FINISHES | H/240 |
| EXTERIOR WALLS - WIND LOADS WITH FLEXIBLE FINISHES | H/120 |



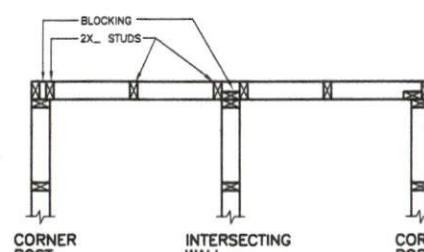
SECTION THRU
KITCHEN CABINETS



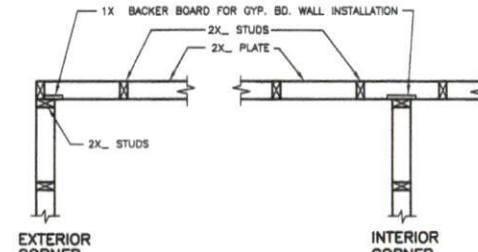
D005
SECT. THRU FIREPLACE ON CONCRETE SLAB



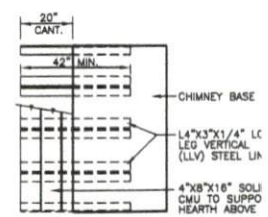
D006
SECT. THRU FIREPLACE ON WOOD FLOOR



D007
DETAIL BASIC WALL FRAMING



D008
DETAIL ADVANCED WALL FRAMING



PLAN VIEW
OF SUSPENDED HEARTH

Standard Homes Plan Service, Inc.

7200 SUNSET LAKE ROAD FUQUAY-VARINA, NC 27526 (919)552-5677

SEE HOME DESIGN PREVIEWS ONLINE AT WWW.STANDARHHOMES.COM

STANDARD CONSTRUCTION DETAILS