

Graphical Illustration - Not To Scale
 Member Cut Length - 34'- 9 7/16"
 MemberPitch - 0/12

Design Information:

Building Code:	IRC2015	Floor Dead Load:	10.0 lb/ft ²	Roof Dead Load:	10.0 lb/ft ²	Ground Snow Load:	0.0 lb/ft ²
Design Methodology:	ASD	Floor Live Load:	40.0 lb/ft ²	Roof Live Load:	20.0 lb/ft ²		
		Unbraced Length Top:	0'	Bottom:	17'- 5 5/8"		

Design Results:

	Location	Design	Control	Result	LDF	Load Combination	
Critical Moment (Pos)	7'- 11 7/16"	2255.86 lb ft	3755.02 lb ft	Passed - 60%	1.00	D + L	
Critical Moment (Neg)	18'- 1 1/2"	-2889.27 lb ft	3755.02 lb ft	Passed - 77%	1.00	D + L	
Critical Shear	17'- 11 11/16"	858.53 lb	1485.00 lb	Passed - 58%	1.00	D + L	
Live Load Deflection	8'- 9 3/16"	0'- 1/4"	0'- 3/4" (L/480)	Passed - L/786	-	L	
Total Load Deflection	8'- 7 13/16"	0'- 5/16"	0'- 1" (L/240)	Passed - L/654	-	D + L	
Max. Reaction			<u>Supported Mt/</u> <u>Supporting Mt/</u>				
	0'- 5 1/8"	643.84 lb	1160.00 lb	6507.80 lb	Passed - 56%	1.00	D + L
	18'- 1 1/2"	1697.26 lb	2330.20 lb	6562.44 lb	Passed - 73%	1.00	D + L
	34'- 4 5/16"	594.01 lb	1160.00 lb	6507.78 lb	Passed - 51%	1.00	D + L

Loading:

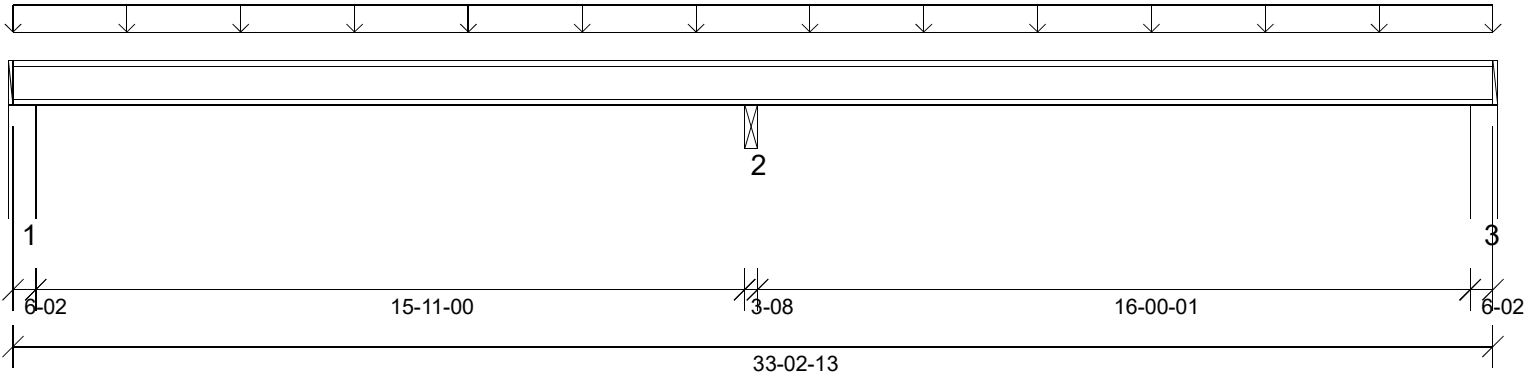
Type	Start	End	Source	Maximum Load Magnitudes			
				Dead	Floor Live	Roof Live	Snow
Uniform	0'	34'- 9 7/16"	FC1 Floor Material	16 lb/ft	64 lb/ft	-	-

Support Information:

Support	Start	End	Source	Maximum Analysis Reactions			
				Dead	Floor Live	Roof Live	Snow
1	0'	0'- 6 1/8"	W15(i15)	117.00 lb	526.00/-57.00 lb	-	-
2	17'- 11 3/4"	18'- 3 1/4"	DBM1(i633)	339.00 lb	1358.00 lb	-	-
3	34'- 3 5/16"	34'- 9 7/16"	W4(i6)	103.00 lb	491.00/-80.00 lb	-	-

Errors, Warnings & Notes:

- * The dead loads used in the design of this member were applied to the structure as projected dead loads.
- * The member graphic, dimensions, and locations shown on this report are based on the centerline of the member.
- * Analysis and Design has been performed using precision loading from actual modeled conditions. Some loads may have been modified to simplify reporting.



Graphical Illustration - Not To Scale
 Member Cut Length - 33'- 2 13/16"
 MemberPitch - 0/12

Design Information:

Building Code:	IRC2015	Floor Dead Load:	10.0 lb/ft ²	Roof Dead Load:	10.0 lb/ft ²	Ground Snow Load:	0.0 lb/ft ²
Design Methodology:	ASD	Floor Live Load:	40.0 lb/ft ²	Roof Live Load:	20.0 lb/ft ²		
		Unbraced Length	Top: 0'	Bottom:	16'- 1/16"		

Design Results:

	Location	Design	Control	Result	LDF	Load Combination	
Critical Moment (Pos)	25'- 10 3/4"	1899.05 lb ft	3755.02 lb ft	Passed - 51%	1.00	D + L	
Critical Moment (Neg)	16'- 6 7/8"	-2615.70 lb ft	3755.02 lb ft	Passed - 70%	1.00	D + L	
Critical Shear	16'- 8 11/16"	797.71 lb	1485.00 lb	Passed - 54%	1.00	D + L	
Live Load Deflection	25'- 1 5/8"	0'- 3/16"	0'- 3/4" (L/480)	Passed - L/989	-	L	
Total Load Deflection	25'- 3 1/16"	0'- 1/4"	0'- 1" (L/240)	Passed - L/826	-	D + L	
Max. Reaction			<u>Supported Mt</u>	<u>Supporting Mt</u>			
	0'- 5 1/8"	591.47 lb	1160.00 lb	6507.83 lb	Passed - 51%	1.00	D + L
	16'- 6 7/8"	1616.98 lb	2330.20 lb	6562.53 lb	Passed - 69%	1.00	D + L
	32'- 9 11/16"	594.41 lb	1160.00 lb	6507.78 lb	Passed - 51%	1.00	D + L

Loading:

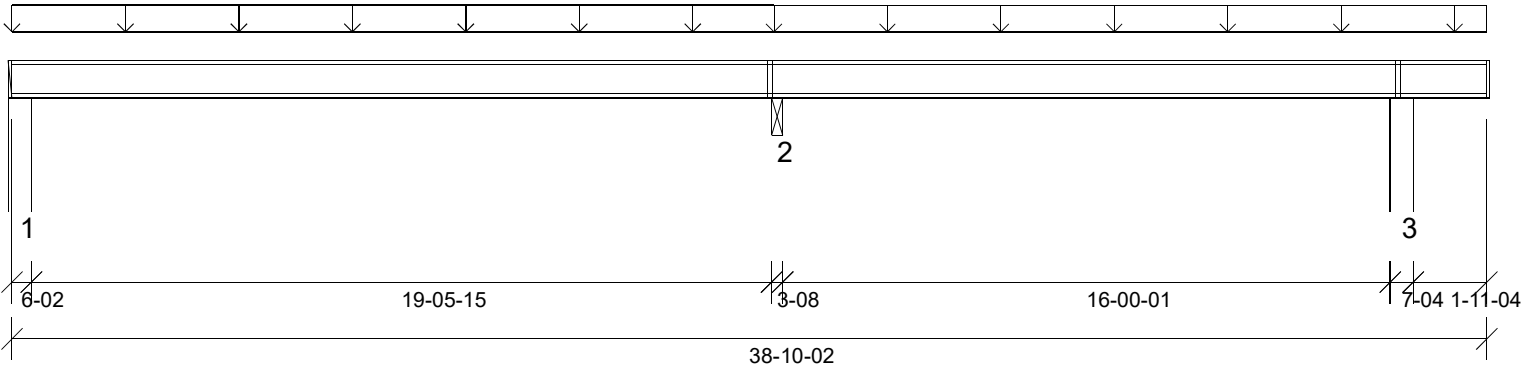
Type	Start	End	Source	Maximum Load Magnitudes			
				Dead	Floor Live	Roof Live	Snow
Uniform	0'	33'- 2 13/16"	FC1 Floor Material	16 lb/ft	64 lb/ft	-	-

Support Information:

Support	Start	End	Source	Maximum Analysis Reactions			
				Dead	Floor Live	Roof Live	Snow
1	0'	0'- 6 1/8"	W13(i12)	105.00 lb	486.00/-65.00 lb	-	-
2	16'- 5 1/8"	16'- 8 5/8"	DBM1(i633)	323.00 lb	1294.00 lb	-	-
3	32'- 8 11/16"	33'- 2 13/16"	W4(i6)	106.00 lb	488.00/-64.00 lb	-	-

Errors, Warnings & Notes:

- * The dead loads used in the design of this member were applied to the structure as projected dead loads.
- * The member graphic, dimensions, and locations shown on this report are based on the centerline of the member.
- * Analysis and Design has been performed using precision loading from actual modeled conditions. Some loads may have been modified to simplify reporting.



Graphical Illustration - Not To Scale
 Member Cut Length - 38'- 10 1/8"
 MemberPitch - 0/12

Design Information:

Building Code: IRC2015	Floor Dead Load: 10.0 lb/ft ²	Roof Dead Load: 10.0 lb/ft ²	Ground Snow Load: 0.0 lb/ft ²
Design Methodology: ASD	Floor Live Load: 40.0 lb/ft ²	Roof Live Load: 20.0 lb/ft ²	
	Unbraced Length Top: 0'	Bottom: 19'- 5 7/16"	

Design Results:

	Location	Design	Control	Result	LDF	Load Combination
Critical Moment (Pos)	8'- 10 3/16"	2825.76 lb ft	3755.02 lb ft	Passed - 75%	1.00	D + L
Critical Moment (Neg)	20'- 1 13/16"	-3160.32 lb ft	3755.02 lb ft	Passed - 84%	1.00	D + L
Critical Shear	20'	936.63 lb	1485.00 lb	Passed - 63%	1.00	D + L
Live Load Deflection	9'- 8 3/8"	0'- 3/8"	0'- 3/4" (L/480)	Passed - L/582	-	L
Total Load Deflection	9'- 7 3/8"	0'- 1/2"	0'- 1" (L/240)	Passed - L/479	-	D + L
Max. Reaction			<u>Supported Mt!</u> <u>Supporting Mt!</u>			
	0'- 5 1/8"	715.31 lb	1160.00 lb 6507.92 lb	Passed - 62%	1.00	D + L
	20'- 1 13/16"	1686.19 lb	2330.20 lb 6562.53 lb	Passed - 72%	1.00	D + L
	36'- 7 1/4"	645.10 lb	2595.00 lb 7703.19 lb	Passed - 25%	1.00	D + L

Design Notes:

* The deflection at the cantilever for either live and/or total loads is less than 3/8" and therefore has been excluded from the deflection ratio considerations.

Loading:

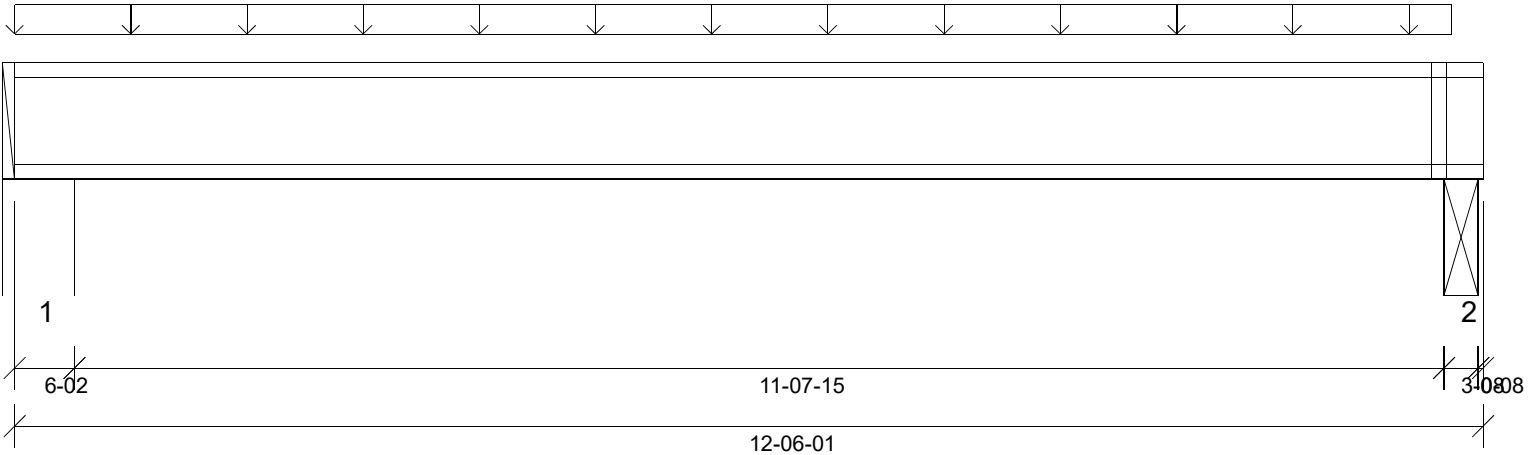
Type	Start	End	Source	Maximum Load Magnitudes			
				Dead	Floor Live	Roof Live	Snow
Uniform	0'	20'- 13/16"	FC1 Floor Material	16 lb/ft	64 lb/ft	-	-
Uniform	20'- 13/16"	38'- 10 1/8"	FC1 Floor Material	14 lb/ft	55 lb/ft	-	-

Support Information:

Support	Start	End	Source	Maximum Analysis Reactions			
				Dead	Floor Live	Roof Live	Snow
1	0'	0'- 6 1/8"	W11(i9)	134.00 lb	578.00/-43.00 lb	-	-
2	20'- 1/16"	20'- 3 9/16"	DBM1(i633)	337.00 lb	1362.00 lb	-	-
3	36'- 3 5/8"	36'- 10 7/8"	W4(i6)	109.00 lb	537.00 lb	-	-

Errors, Warnings & Notes:

- * The dead loads used in the design of this member were applied to the structure as projected dead loads.
- * The member graphic, dimensions, and locations shown on this report are based on the centerline of the member.
- * Analysis and Design has been performed using precision loading from actual modeled conditions. Some loads may have been modified to simplify reporting.



Graphical Illustration - Not To Scale
 Member Cut Length - 12'- 6 1/16"
 MemberPitch - 0/12

Design Information:

Building Code: IRC2015	Floor Dead Load: 10.0 lb/ft ²	Roof Dead Load: 10.0 lb/ft ²	Ground Snow Load: 0.0 lb/ft ²
Design Methodology: ASD	Floor Live Load: 40.0 lb/ft ²	Roof Live Load: 20.0 lb/ft ²	
	Unbraced Length Top: 0'	Bottom: 11'- 7 7/16"	

Design Results:

	Location	Design	Control	Result	LDF	Load Combination
Critical Moment (Pos)	6'- 4 5/8"	1761.28 lb ft	3755.02 lb ft	Passed - 47%	1.00	D + L
Critical Moment (Neg)	0'- 5 1/8"	-13.12 lb ft	3755.02 lb ft	Passed - 0%	1.00	D + L
Critical Shear	0'- 6 3/16"	586.86 lb	1485.00 lb	Passed - 40%	1.00	D + L
Live Load Deflection	6'- 4 1/2"	0'- 1/8"	0'- 3/4" (L/480)	Passed - L/999	-	L
Total Load Deflection	6'- 4 1/2"	0'- 1/8"	0'- 1" (L/240)	Passed - L/981	-	D + L
Max. Reaction			Supported Mt/ Supporting Mt/			
	0'- 5 1/8"	647.80 lb	1160.00 lb 6507.80 lb	Passed - 56%	1.00	D + L
	12'- 3 13/16"	585.23 lb	1121.99 lb 6562.36 lb	Passed - 52%	1.00	D + L

Loading:

Type	Start	End	Source	Dead	Maximum Load Magnitudes		
					Floor Live	Roof Live	Snow
Uniform	0'	12'- 2 13/16"	FC1 Floor Material	20 lb/ft	80 lb/ft	-	-

Support Information:

Support	Start	End	Source	Dead	Maximum Analysis Reactions		
					Floor Live	Roof Live	Snow
1	0'	0'- 6 1/8"	W8(i8)	129.00 lb	515.00 lb	-	-
2	12'- 2 1/16"	12'- 5 9/16"	DBM2(i628)	118.00 lb	471.00 lb	-	-

Errors, Warnings & Notes:

- * The dead loads used in the design of this member were applied to the structure as projected dead loads.
- * The member graphic, dimensions, and locations shown on this report are based on the centerline of the member.
- * Analysis and Design has been performed using precision loading from actual modeled conditions. Some loads may have been modified to simplify reporting.