

THIS LAYOUT IS TO BE USED AS A TRUSS PLACEMENT GUIDE ONLY.  
PLEASE REFER TO BUILDING PLANS FOR BUILDING CONSTRUCTION AND DETAILS,  
SUCH AS PLUMBING OR DUCT DROPS.

PROPOSED DESIGN-  
NOT FOR  
CONSTRUCTION

Job #  
Q-2002150

HB 2000 V2

- Notes:
- Exterior dimensions shown are assumed to be:
    - Out-to-out of stud
    - Out-to-out of sheathing
  - Adjust truss locations as needed for plumbing and mechanical clearance. Unless otherwise noted, trusses may be shifted as long as O.C. spacing shown is not exceeded.
  - Do not cut, drill, or otherwise damage any part of any truss without prior approval from Peak Truss.
  - Do not approve drawings if any information herein is unclear. Once ordered trusses will be fabricated as approved.
  - Please contact Peak Truss Builders with any questions. We are available to help any way we can. We can be reached at 919-545-5555 or sales@peaktruss.com

Roof Truss Loading per  
2018 NC Residential Code

Top Chord Live Load 20# PSF  
Top Chord Dead Load 10# PSF  
Bottom Chord Live Load 0# PSF  
Bottom Chord Dead Load 10# PSF

Trusses are designed for additional storage load wherever a 42"x24" box will fit between the webs.

- △ - This symbol denotes left end of truss as shown on truss drawings
- - Approximate location of toilet drop. Builder please confirm.

Truss connections by others:

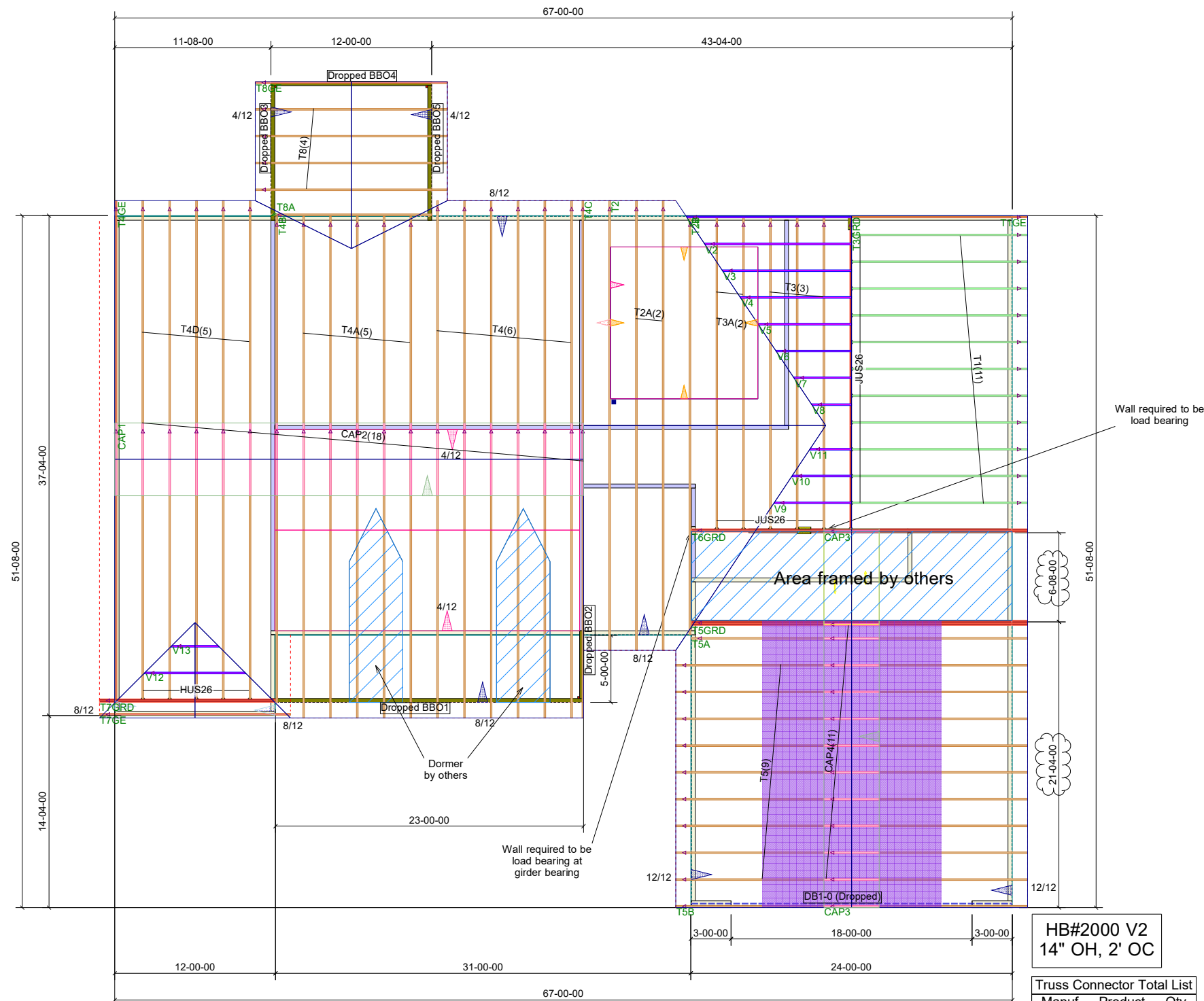
- ⊕ - Nailed
- ⊖ - Ledger

Date Quoted:

Designer:  
Aron Meeks

Herring Construction

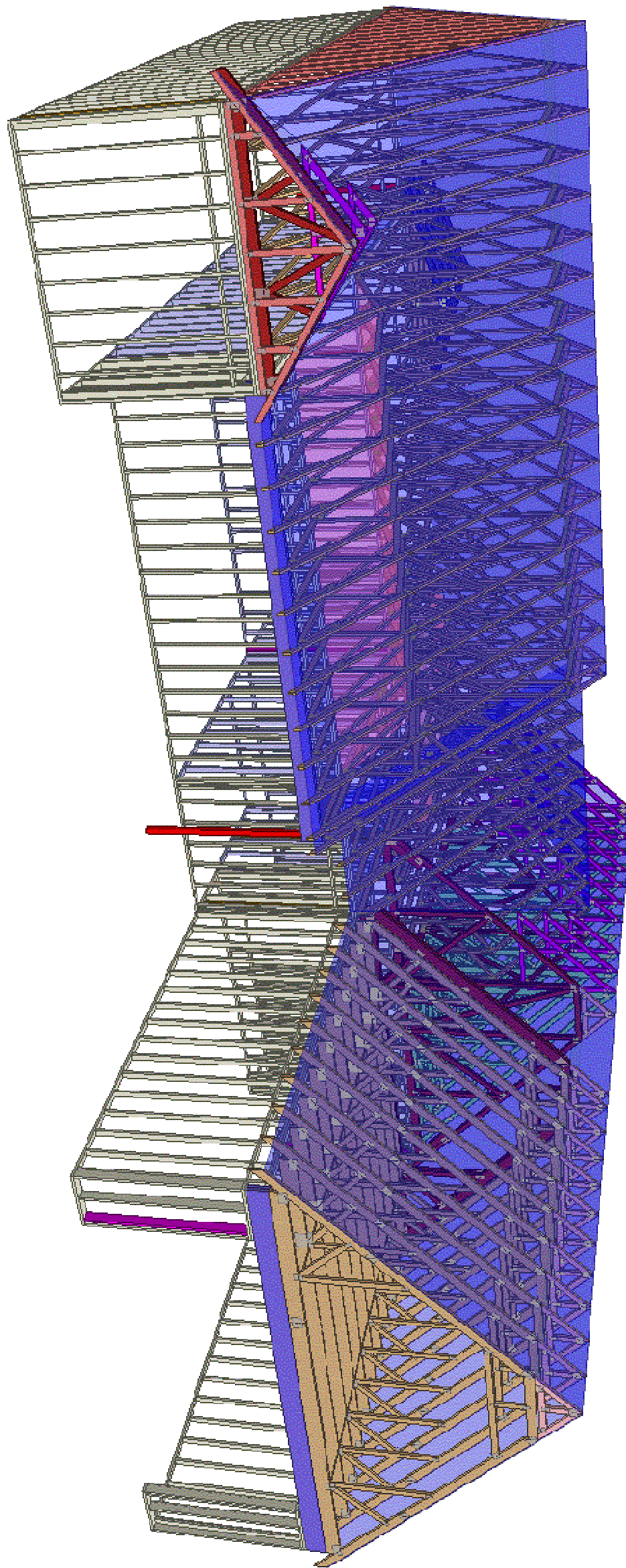
Peak Truss  
Builders, LLC  
PO Box 340, New Hill, NC 27562



HB#2000 V2  
14" OH, 2' OC

Truss Connector Total List		
Manuf	Product	Qty
USP	HUS26	6
USP	JUS26	16

Products					
PlotID	Length	Product	Plies	Net Qty	Fab Type
DB1-0 (Dropped)	24-00-00	1-3/4X11-7/8 LP-LVL 2900Fb-2.0E	2	2	MFD



**Peak Truss  
Builders, LLC**

PO Box 340, New Hill, NC 27562

Herring Construction

Date Quoted:

Designer:

**Aron Meeks**

HB 2000 V2

Job #

**Q-2002150**