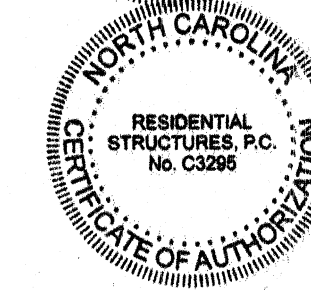
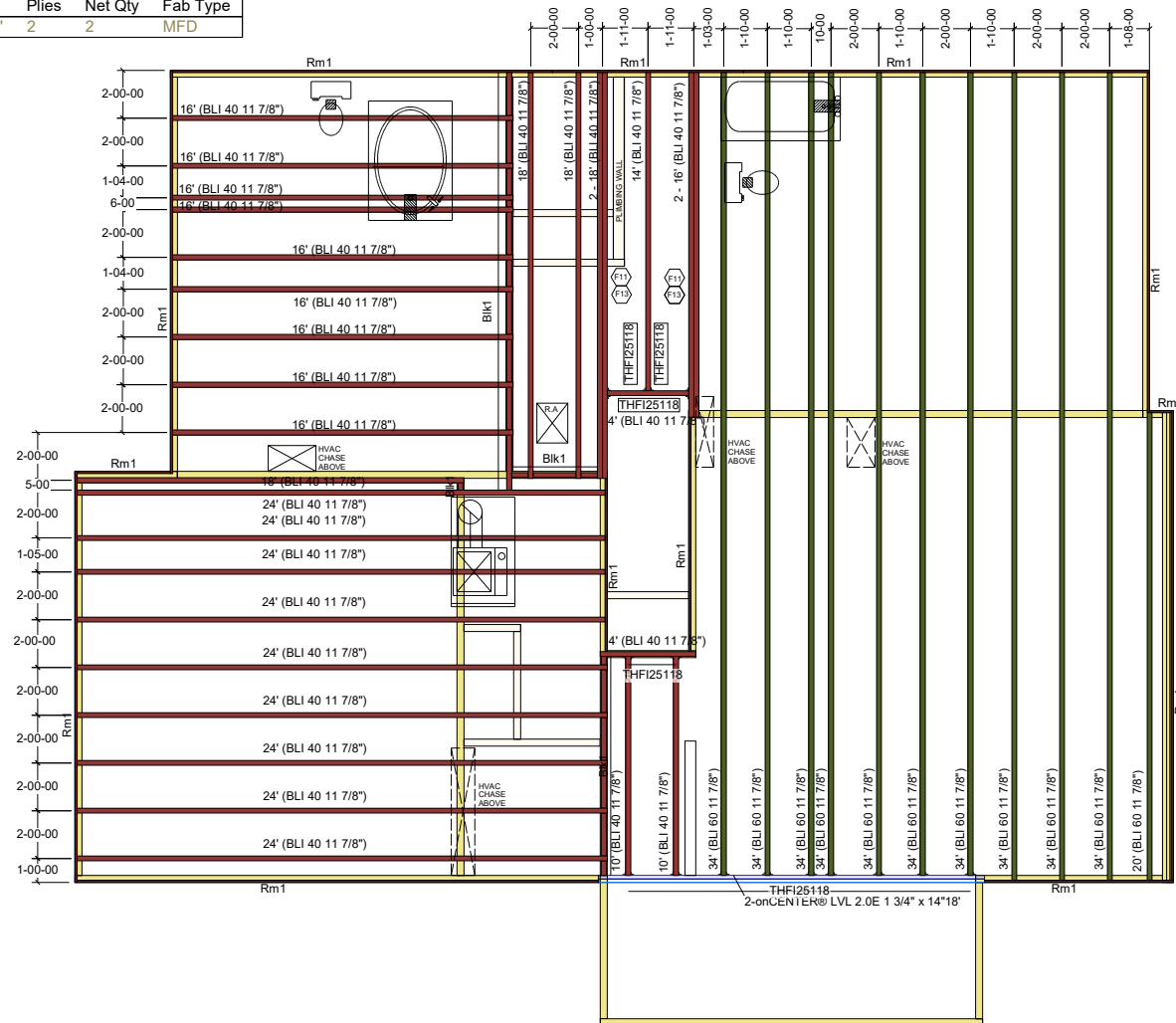


THE LENOX
SECOND FLOOR NOF-11

PlotID	Length	Product	Plies	Net Qty	Fab Type
24' (BLI 40 11 7/8")	24-00-00	BLI 40 11 7/8"	1	9	MFD
18' (BLI 40 11 7/8")	18-00-00	BLI 40 11 7/8"	1	3	MFD
2 - 18' (BLI 40 11 7/8")	18-00-00	BLI 40 11 7/8"	2	2	FF
16' (BLI 40 11 7/8")	16-00-00	BLI 40 11 7/8"	1	9	MFD
2 - 16' (BLI 40 11 7/8")	16-00-00	BLI 40 11 7/8"	2	2	FF
14' (BLI 40 11 7/8")	14-00-00	BLI 40 11 7/8"	1	1	MFD
10' (BLI 40 11 7/8")	10-00-00	BLI 40 11 7/8"	1	2	MFD
4' (BLI 40 11 7/8")	4-00-00	BLI 40 11 7/8"	1	2	FF
34' (BLI 60 11 7/8")	34-00-00	BLI 60 11 7/8"	1	10	MFD
20' (BLI 60 11 7/8")	20-00-00	BLI 60 11 7/8"	1	1	MFD
2-onCENTER@ LVL 2.0E 1 3/4" x 14"18'	18-00-00	onCENTER@ LVL 2.0E 1 3/4" x 14"	2	2	MFD
Rm1	12-00-00	onCENTER@ Rim SE 1 1/8" x 11 7/8"	1	14	FF
Blk1	28-00-00	BLI 40 11 7/8"	1	1	MFD
Sheathing for DBL*		5/8" 4x8 square edge OSB	1	1	FF
2x8 for DBL joist*	16-00-00	2x8 #2 SYP	1	1	FF
2x8 for DBL jois*	18-00-00	2x8 #2 SYP	1	1	FF

Wall Framing					
PlotID	Length	Product	Plies	Net Qty	Fab Type
Hdr1	20-00-00	onCENTER@ LVL 2.0E 1 3/4" x 11 7/8"	2	2	MFD

Connector Summary					
Qty	Manuf	Product	Flange	Skew	Slope
14		THFI25118	None	-	-



RESIDENTIAL STRUCTURES, P.C.
3410 N. Davidson St.
Charlotte, N.C. 28205
Seal For Structural Only

NOTES:

1. For all layouts based on plans that have been sealed by an engineer:

This is a placement plan only. This layout is to be used in congruence with the plans sealed by the engineer of record. TBC is not responsible for the design of the floor system indicated. Please see the engineer's plans for all structural information, bolts/screw/nail pattern, connections, hardware, loading information, etc..

2. For all layouts based on plans not sealed by an engineer:

This design is intended to meet NCBC based on the design loadings indicated or not indicated, based on the minimum required loadings per code. All EWP designs are to be reviewed and approved by a structural engineer of record or the general contractor of record prior to installation. It is recommended that all designs are to be reviewed and stamped by a local engineer prior to shipment. Please refer to the Blulinx Installation Guide for all connections, Solid blocking, web filling information, etc. All concentrated loads bearing through the roof and floor systems must be solid blocked in order to avoid any crushing of EWP material.

3. General Installation Notes:

I-Joists require 1 3/4" minimum bearing and should be nailed to the bearing plate with one sinker nail on each side.

I-Joist Rim and onCenter Rimboard should be nailed to the bearing plate with 8d nails @ 6" OC.

Side Loaded Double I-Joists shall be packed solid and connected with 2 rows of 10d nails @ 12" OC.

The Building Center
Engineered Wood Division

2nd Floor Placement Plan

Plan: **20-754**
2478 The Lenox

Job: **True Homes**
Norris Farm #11

Date: 7/17/2020 Scale: 1/8"=1'-0"

Designed By: **BG**

Checked By: **RR** Revised By:

Sheet: **1 of 1**