

OAKHAVEN DRIVE

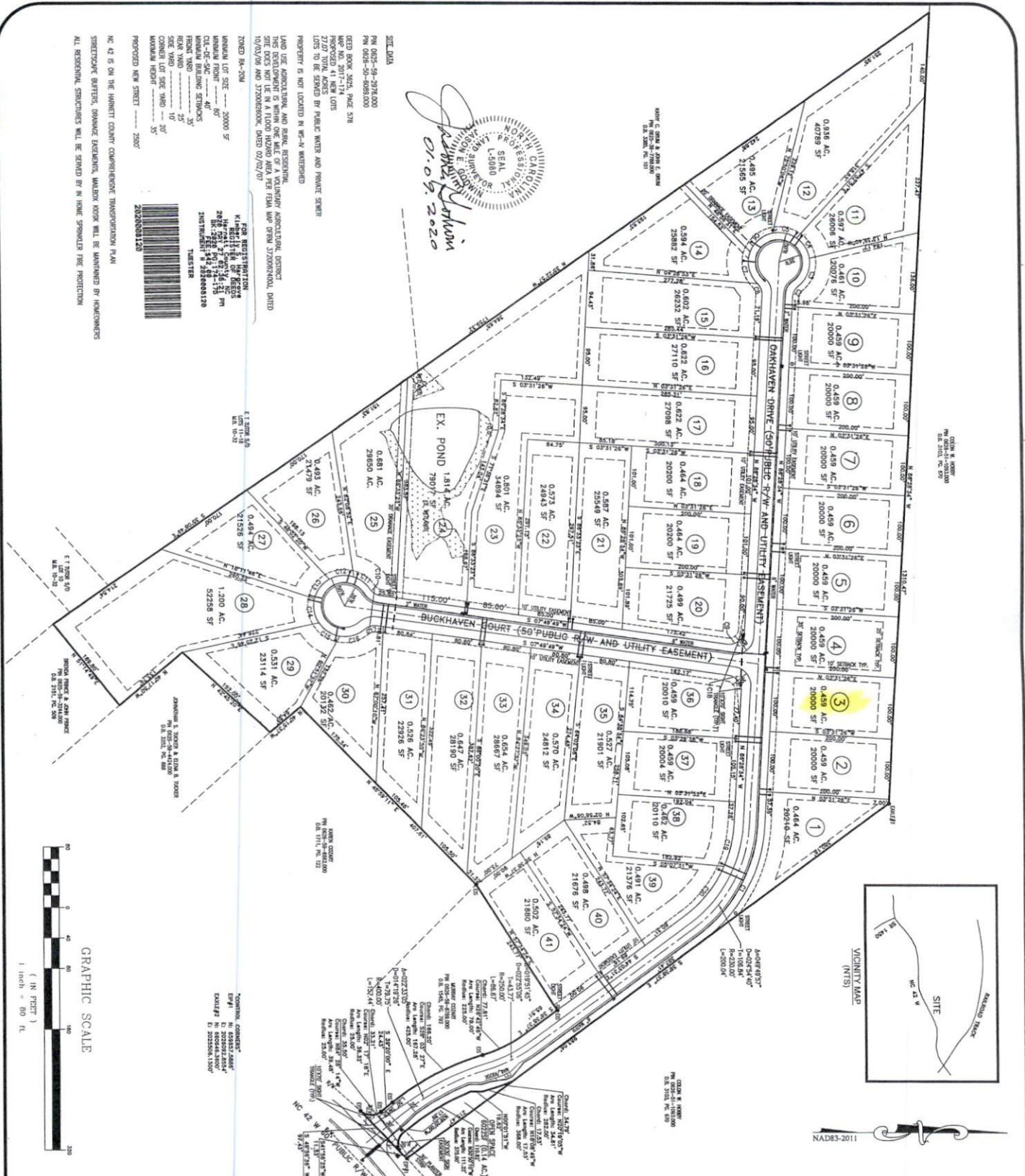
CUMBERLAND HOMES, INC.
 THE MORGAN II W/ 3RD CAR GARAGE
 LOT # 3 OAK HAVEN
 SCALE: 1"=40'

SITE PLAN APPROVAL

DISTRICT RAZOM USE 62x48 ^{SFD}

#BEDROOMS 4

7-22-20 N.A.G.
 ZONING ADMINISTRATOR



SITE DATA
 PLAN DATE: 01-09-2020
 PLAN NUMBER: 4934-01-000000
 SHEET: 1 OF 2

DEED BOOK: 2022, PAGE: 578
 77.07 TOTAL ACRES
 PROPOSED 41 NEW LOTS
 LOTS TO BE SERVED BY PUBLIC WATER AND SEWER
 PROPERTY IS NOT LOCATED IN WS-V WATERSHED

LAND USE: AGRICULTURAL AND BARN, RESIDENTIAL
 THIS DEVELOPMENT IS WITHIN ONE MILE OF A VOLUNTARY AGRICULTURAL DISTRICT
 10/20/2019 AND 3/20/2020. DATED 02/27/20

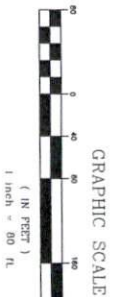
ZONED: R4-20H

MINIMUM LOT SIZE: 20000 SF
 MINIMUM FRONT SETBACK: 30'
 MINIMUM SIDE SETBACK: 10'
 MINIMUM REAR SETBACK: 10'
 MINIMUM FRONT YARD SETBACK: 10'
 MINIMUM REAR YARD SETBACK: 10'
 MINIMUM SIDE YARD SETBACK: 10'
 MINIMUM HEIGHT: 35'

FOR REGISTRATION:
 W/RECORDING OF DEEDS
 2878 WEST 17TH STREET, SUITE 101
 RALEIGH, NC 27603
 INSTRUMENT NUMBER: 2020003120
 TRUSTEE

BARCODE: 2020003120

WE 42 IS ON THE HARNETT COUNTY COMPENSATORY TRANSPORTATION PLAN
 STREETSCAPE ARTISTS, DRAINAGE ENGINEERS, WATERBOX WORK WILL BE MAINTAINED BY HOMEOWNERS
 ALL REMOVAL, STRUCTURES WILL BE SERVED BY HOME SPRINKLER FIRE PROTECTION



EE PROJECT: 4934
 SHEET: 1 OF 2
S-1

**SUBDIVISION MAP
 FOR
 OAKHAVEN SUBDIVISION**

LOCATION:
 NC HIGHWAY 42
 BUCKHORN TOWNSHIP
 HARNETT COUNTY, NC

PROPERTY OWNER(S):
 PN DEVELOPMENT, LLC
 108 COMMERCE DRIVE
 DUNN, NC 28335

PLAN INFORMATION:	
DESIGNED BY: EE, PA	HORIZONTAL SCALE: 1" = 100'
DRAWN BY: EE, PA	VERTICAL SCALE: 1" = 100'
CHECKED BY: JEG	DATE CREATED: 01-09-2020
REVISION:	

Enoch
Engineers, P.A.
 CONSULTING ENGINEERS & SURVEYORS
 1403 NC Highway 50 South - Benson, NC 27504
 Phone: (919) 894-7765 Fax: (919) 894-8190
 E-mail: general@enochengineers.com
 N.C. Firm License #C-2061

NOTE: This document, in physical or electronic form, contains subject matter considered confidential to ENOCH ENGINEERS, P.A. and its clients. ENOCH ENGINEERS, P.A. has no liability for reproduction, distribution, or use of this document in any form without the written permission of ENOCH ENGINEERS, P.A.