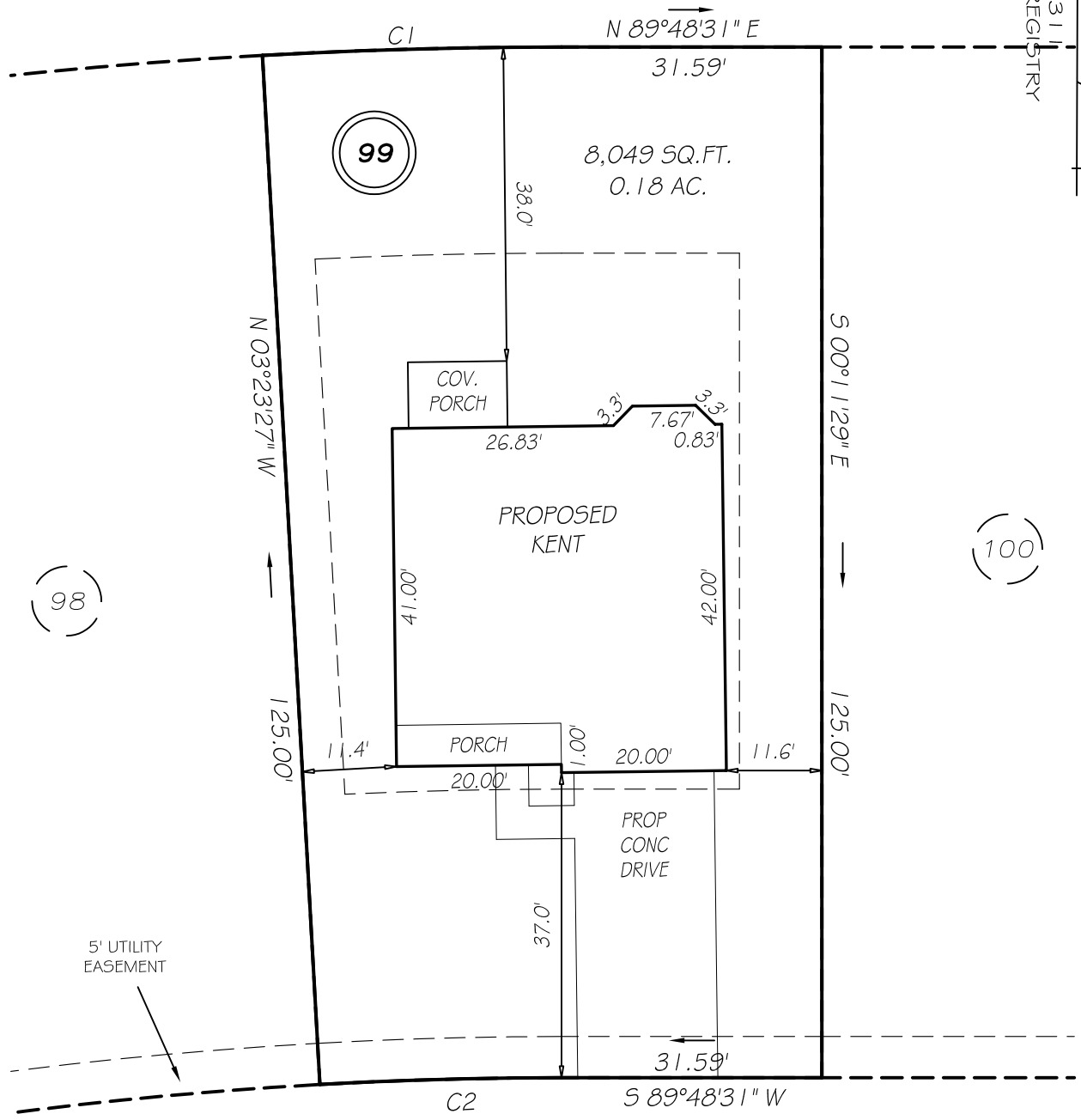


I, MICHAEL P. GRIFFIN, certify that under my direction and supervision this map was drawn from an actual field survey; that the error of closure of the survey as calculated by coordinates is 1: 10,000+; that the area shown hereon was calculated by coordinates.

Witness my hand and seal this day of MONTH 2020.

ANDERSON CREEK PARTNERS, LP
 PIN 0505-86-8897
 DB 1346 PG 98

MAP 2019 PG 311
 HARNETT CO. REGISTRY



FALLS CREEK DRIVE

PRIVATE & UTILITY 50' RW

SETBACKS

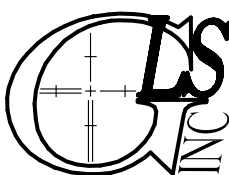
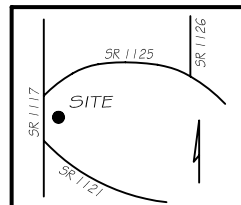
FRONT	35'
REAR	25'
SIDE	5'
OTHER SIDE	10'
CORNER SIDE	20'

C1 R=650.00' L=36.30' S88°12'32"W 36.30'
 C2 R=525.00' L=29.32' S88°12'32"W 29.32'

PRELIMINARY
 NOT FOR RECORDATION,
 SALES OR CONVEYANCE

LEGEND

EIP	EXISTING IRON PIPE	FES	FLARED END SECTION
IPS	IRON PIPE SET	WM	WATER METER
R/W	RIGHT OF WAY	CO	CLEAN OUT
N/F	NOW OR FORMERLY	FH	FIRE HYDRANT
EIS	EXISTING IRON STAKE	CB	CATCH BASIN



GRIFFIN LAND SURVEYING, INC.

P. O. BOX 148
 FUQUAY-VARINA, NC 27526
 (919) - 567 - 1963

PLOT PLAN

FOR

H & H HOMES

ANDERSON CREEK CLUB

LOT 99

FALLS CREEK DRIVE

NORTH CAROLINA

HARNETT COUNTY ANDERSON CREEK TOWNSHIP

DRAWN BY **NMF**

DATE _____

CHECKED BY **MPG**

SCALE **1" = 20'**