

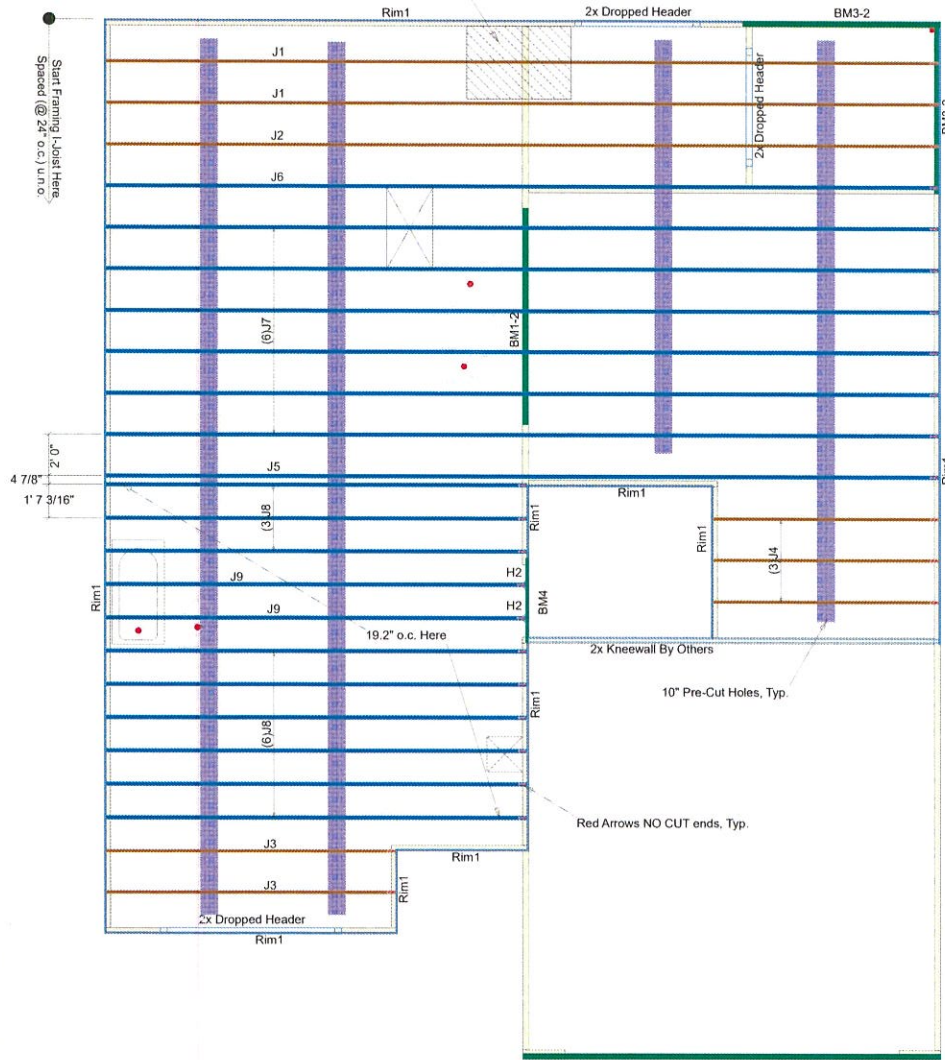
Note: Refer to current Boise Cascade Installation Guide for details not shown.

General Notes:

- 1.) "READ" Boise Installation Guide before installation of products.
- 2.) All I-Joist, LVL beams, and Rim Board must be field cut to length.
- 3.) Contractor must verify and approve the material list.
- 4.) I-Joist may be moved 3" out of its own o.c. spacing, up to 19.2" o.c., to allow for plumbing drops.
- 5.) This layout, is a placement plan and, was designed in accordance with the original design of the structure (unless otherwise noted). See original plans for additional structural notes.
- 6.) Ceramic tile floors should be supported per APA standards. Additional joists may be required.
- 7.) HVAC & PLUMBER, "Review" Boise Installation Guide (Joist Hole Location & Sizing) Chart "BEFORE" cutting the I-joist product.
- 8.) "Blocking", are Random Length I-joist, Labeled as such.

We Recommend Locating Plumbing Drops & Moving Joist Accordingly Before Installation

Garden Tub, Locate Drain as Needed



I-Joist Plot ID # & Length on Top of Flange

2nd FLOOR LAYOUT

DN01 DO NOT cut, notch or drill flanges

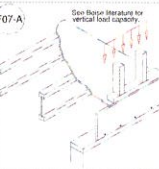
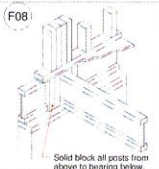
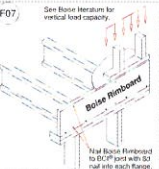
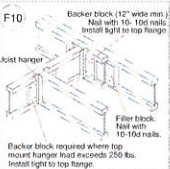
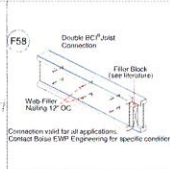
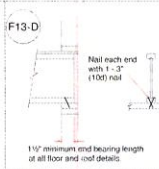
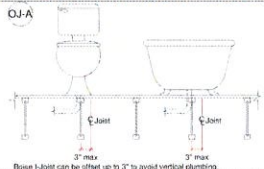


Connector Summary

PlotID	Qty	Manuf	Product	Flange
H2	2	Simpson	IUS 2.37/14	None

Products

PlotID	Length	Product	Plies	Net Qty
J1	40' 0"	14" BCI@ 4500s-1.8	1	2
J2	40' 0"	14" BCI@ 4500s-1.8	1	1
J3	14' 0"	14" BCI@ 4500s-1.8	1	2
J4	11' 0"	14" BCI@ 4500s-1.8	1	3
J5	40' 0"	14" BCI@ 6000s-1.8	1	1
J6	40' 0"	14" BCI@ 6000s-1.8	1	1
J7	40' 0"	14" BCI@ 6000s-1.8	1	6
J8	21' 0"	14" BCI@ 6000s-1.8	1	9
J9	21' 0"	14" BCI@ 6000s-1.8	1	2
BM2-2	20' 0"	1-3/4" x 11-7/8" VERSA-LAM@ 2.0 3100 SP	2	2
BM1-2	12' 0"	1-3/4" x 11-7/8" VERSA-LAM@ 2.0 3100 SP	2	2
BM3-2	10' 0"	1-3/4" x 14" VERSA-LAM@ 2.0 3100 SP	2	4
BM4	6' 0"	1-3/4" x 14" VERSA-LAM@ 2.0 3100 SP	1	1
Rim1	12' 0"	1" x 14" BC RIM BOARD OSB	1	14

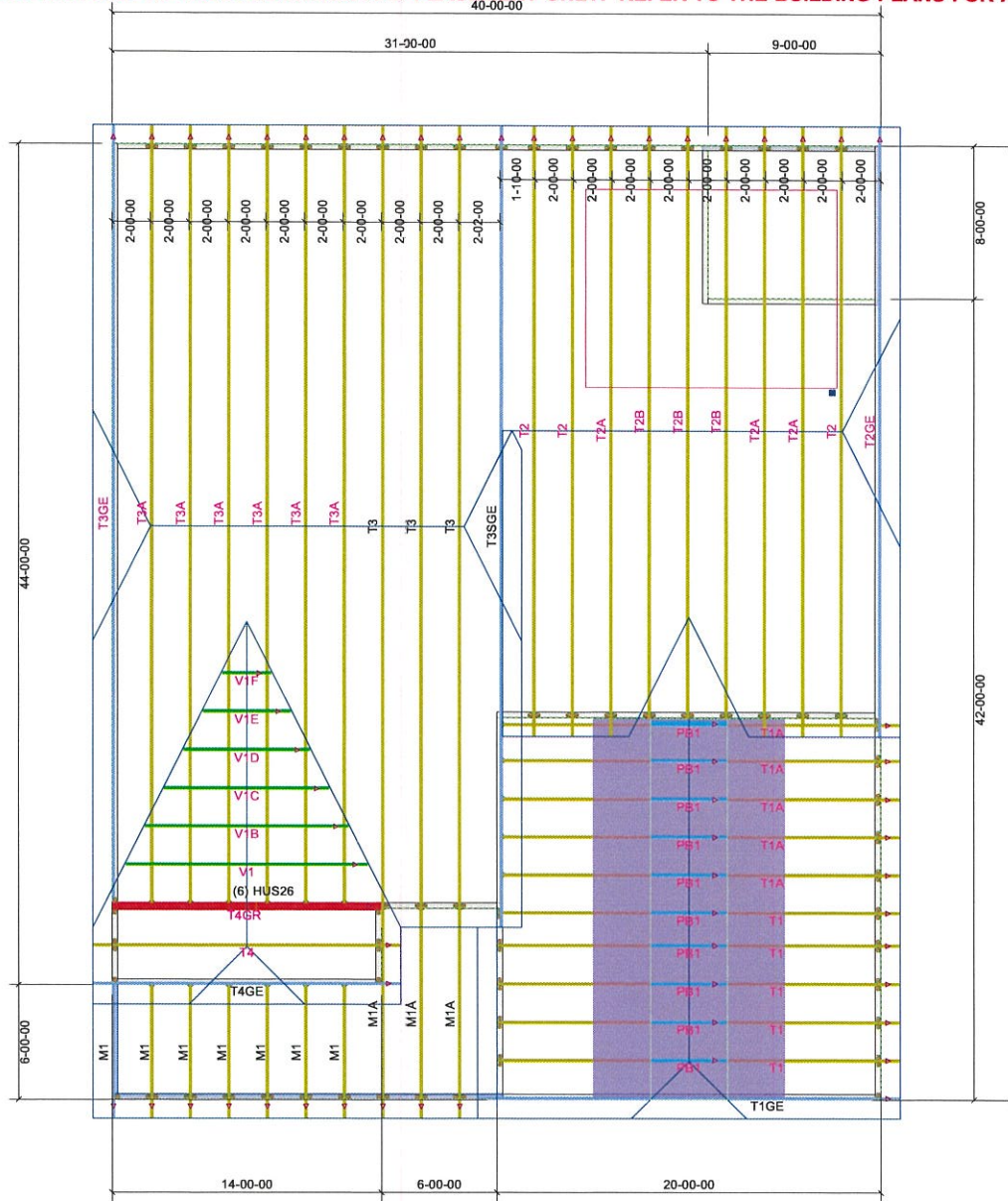


200 Emmett Drive, Dunn, N.C. 28534 (910) 892 + 8400

Cav-Land Development
CL 3067 CP GOR
Plan CL-3067
w/CP (GR)

Scale: NTS
Date: 11-7-2019
By: CMM
DWG:
Sheet: 2 of 2

THIS LAYOUT IS INTENDED FOR THE PURPOSE OF TRUSS LOCATION AND PLACEMENT ONLY. REFER TO THE BUILDING PLANS FOR ACTUAL BUILDING CONSTRUCTION.



1st Level Roof Area 793.86	2nd Level Roof Area 1891.79
-------------------------------	--------------------------------



DEDICATED TO QUALITY AND EXCELLENCE
200 EMMETT ROAD
DUNN, NORTH CAROLINA 28334
PHONE: 910-892-8400

PROJECT: Caviness Land New CL 3067	CUSTOMER: Caviness Land Development	MODEL: New CL-3067	QUOTE #: 1800483	PRINT DATE: 2/28/2018	DRAWN BY: Rodney Evans	SCALE: N.T.S
--	---	------------------------------	----------------------------	---------------------------------	----------------------------------	------------------------

TOP LIVE LOAD: 20.0 lb/ft ²
TOP DEAD LOAD: 10.0 lb/ft ²
BOTTOM DEAD LOAD: 10.0 lb/ft ²
WIND SPEED: 115 mph

GENERAL NOTES:

- DO NOT CUT OR MODIFY TRUSSES
- TRUSSES ARE SPACED 24" ON CENTER UNLESS OTHERWISE NOTED
- REFER TO THE INDIVIDUAL TRUSS DESIGN DRAWINGS FOR THE LOCATION OF LATERAL BRACING AND MULTI-PLY CONNECTION REQUIREMENTS.
- PER ANSI TPI 1-2002 THE TRUSS ENGINEER IS RESPONSIBLE FOR TRUSS TO TRUSS CONNECTIONS AND TRUSS PLY TO PLY CONNECTIONS. THIS DRAWING IS NOT TO BE USED FOR CONNECTIONS TO BEAM OR COLUMN AND TRUSS TO BEAM CONNECTIONS WHICH SHALL BE REVIEWED BY THE BUILDING DESIGNER. IT IS THE RESPONSIBILITY OF THE BUILDING DESIGNER TO RESOLVE ALL ROOF FORCES ADEQUATELY TO THE FOUNDATION.