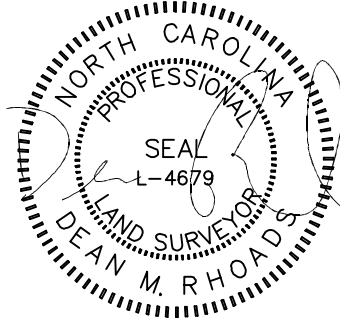


VICINITY MAP
Not To Scale



IMPERVIOUS SURFACE AREA	
DESCRIPTION	AREA (S.F.)
LOT AREA TO B/C	35,606
HOUSE	1,654
DRIVE TO R/W	879
DRIVE APRON	304
PATIO	120
LEAD WALK	40
PUBLIC WALK	0
TOTAL PROPOSED	2,997
% IMPERVIOUS AREA	=8.4%
SOD/SEEDING	
TYPE	S.F.
SOD	7,294
SEED & STRAW	2,059

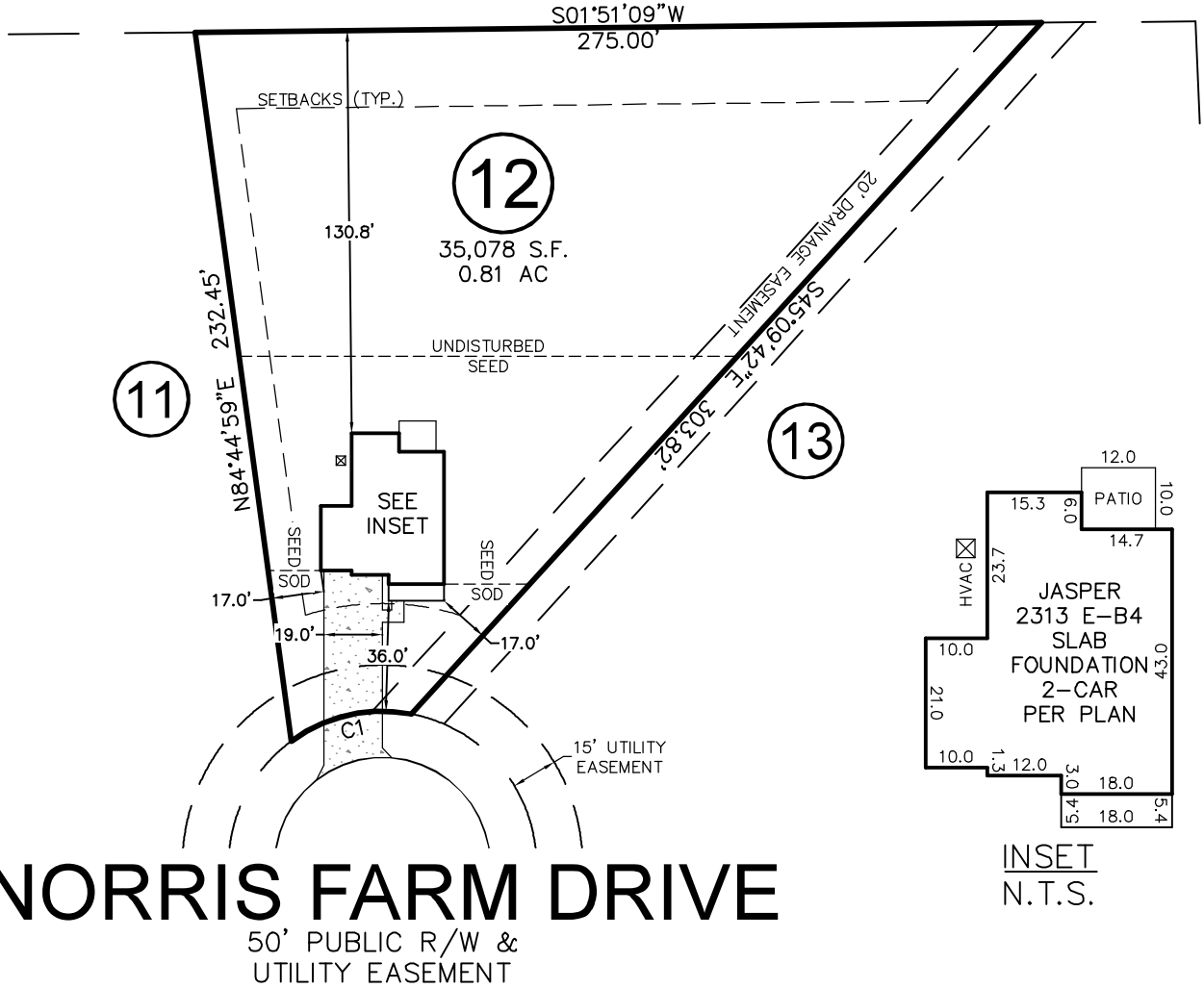
PB 2019, PG 291-293



SETBACKS: (PB 2019 PG 291)

FRONT - 35'
SIDE - 10'
REAR - 25'
CORNER - 20'

N/F
SENER-MATTHEWS LLC
D.B. 3107, PG. 750



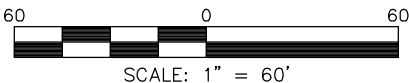
NORRIS FARM DRIVE
50' PUBLIC R/W & UTILITY EASEMENT

CURVE	RADIUS	ARC LENGTH	CH LENGTH	CH BEARING
C1	50.00	41.15	40.00	N 10°16'51\"/>

THIS PROPERTY MAY BE SUBJECT TO ANY AND ALL APPLICABLE DEED RESTRICTIONS, EASEMENTS, RIGHT-OF-WAY, UTILITIES AND RESTRICTIVE COVENANTS WHICH MAY BE OF RECORD OR IMPLIED

THIS DRAWING DOES NOT REFLECT AS-BUILT INFORMATION

PRELIMINARY PLAT
NOT FOR RECORDATION, CONVEYANCES, OR SALES.



RESIDENTIAL LAND SERVICES, PLLC.

1917 Evans Road
Cary, North Carolina 27513
Phone (919) 378-9316
Firm License # P-0873

HOUSE LOCATION PLOT PLAN

FOR
#219 NORRIS FARM DRIVE

LOT 12, NORRIS FARM SUBDIVISION

Black River Township, Harnett County, North Carolina

PROPERTY OF: TRUE HOMES

MAP BOOK 2019 PAGE 291-293 DEED REFERENCE

DRAWN BY: ADP

DATE: JULY 8, 2020