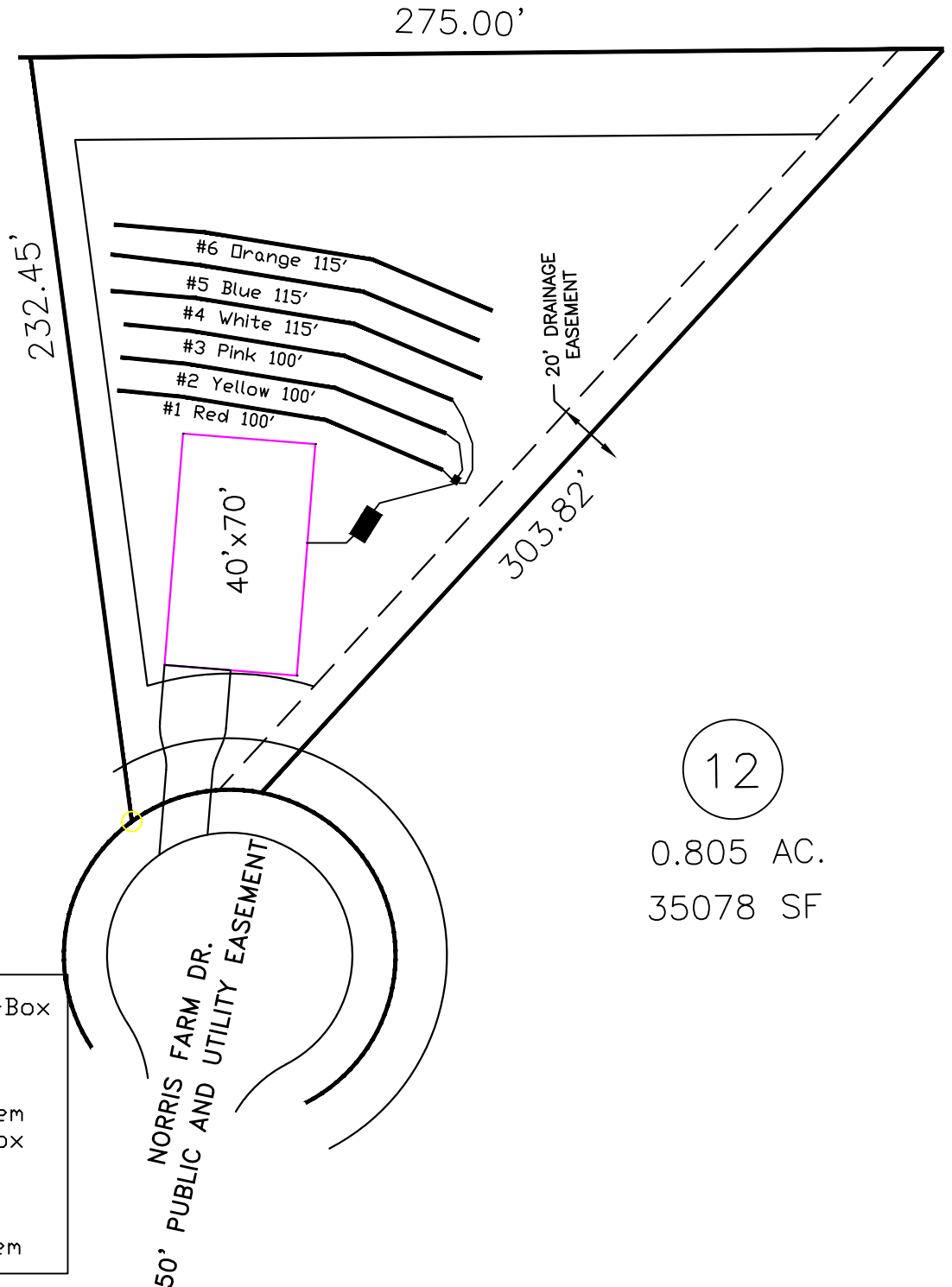


# Norris Farm 4-Bedroom Septic Proposal Lot #12



12

0.805 AC.  
35078 SF

System: Gravity to D-Box  
 Lines: 1-3 (300')  
 0.4 LTAR  
 24" Trench Bottom  
 Accepted Status System  
 Repair: Gravity to D-Box  
 Lines: 4-6 (345')  
 0.35 LTAR  
 24" Trench Bottom  
 Accepted Status System

GRAPHIC SCALE  
1" = 50'



Adams  
 Soil Consulting  
 919-414-6761  
 Job #574