

General Notes:

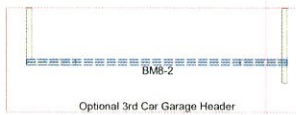
- 1.) "READ" Boise Installation Guide before installation of products.
- 2.) All I-Joist, LVL beams, and Rim Board must be field cut to length.
- 3.) Contractor must verify and approve the material list.
- 4.) I-Joist may be moved 3" out of its own o.c. spacing, up to 19.2" o.c., to allow for plumbing drops.
- 5.) This layout, is a placement plan and, was designed in accordance with the original design of the structure (unless otherwise noted). See original plans for additional structural notes.
- 6.) Ceramic tile floors should be supported per APA standards. Additional joists may be required.
- 7.) HVAC & PLUMBER, "Review" Boise Installation Guide (Joist Hole Location & Sizing) Chart "BEFORE" cutting the I-joist product.
- 8.) "Blocking", are Random Length I-joist, Labeled as such.

Connector Summary				
PlotID	Qty	Manuf	Product	Flange
H1	1	Simpson	HUS 1.81/10	None
H2	2	Simpson	IUS 1.81/14	None
H3	4	Simpson	IUS 2.06/14	None
H4	1	Simpson	MIU 3.56/14	None

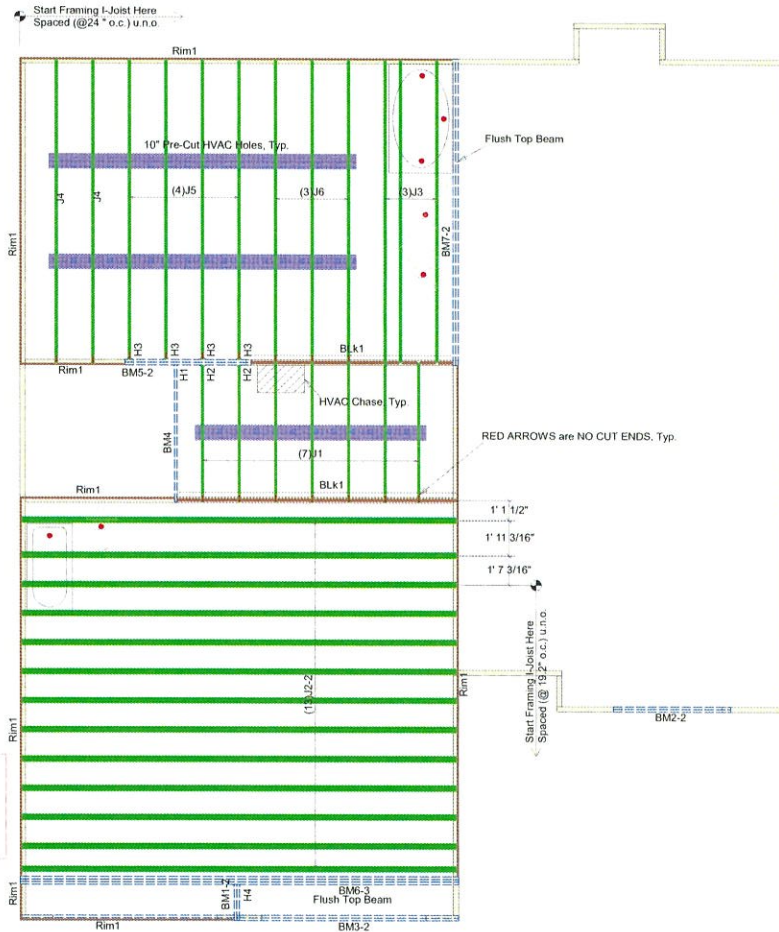
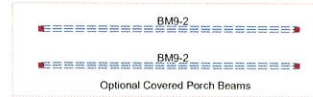
Optional 3rd Car Garage Header				
PlotID	Length	Product	Plies	Net Qty
BM8-2	16' 0"	1-3/4" x 9-1/4" VERSA-LAM@ 2.0 3100 SP	2	2

Optional Covered Porch Beams				
PlotID	Length	Product	Plies	Net Qty
BM9-2	14' 0"	1-3/4" x 9-1/4" VERSA-LAM@ 2.0 3100 SP	2	4

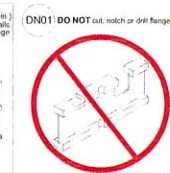
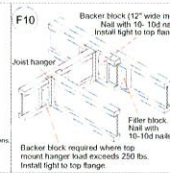
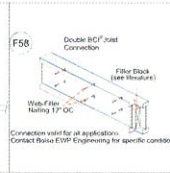
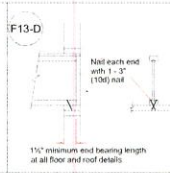
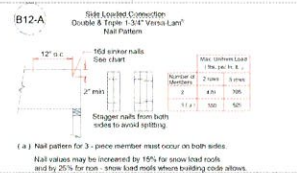
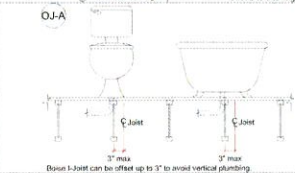
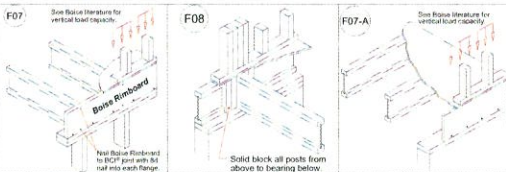
Products				
PlotID	Length	Product	Plies	Net Qty
J1	8' 0"	14" BCI@ 4500s-1.8	1	7
J2-2	24' 0"	14" BCI@ 5000s-1.8	2	26
J3	17' 0"	14" BCI@ 5000s-1.8	1	3
J4	17' 0"	14" BCI@ 5000s-1.8	1	2
J5	17' 0"	14" BCI@ 5000s-1.8	1	4
J6	17' 0"	14" BCI@ 5000s-1.8	1	3
BM1-2	2' 0"	14" BCI@ 4500s-1.8	2	2
BM2-2	8' 0"	1-3/4" x 9-1/4" VERSA-LAM@ 2.0 3100 SP	2	2
BM3-2	24' 0"	1-3/4" x 11-7/8" VERSA-LAM@ 2.0 3100 SP	2	2
BM4	8' 0"	1-3/4" x 14" VERSA-LAM@ 2.0 3100 SP	1	1
BM5-2	8' 0"	1-3/4" x 14" VERSA-LAM@ 2.0 3100 SP	2	2
BM6-3	24' 0"	1-3/4" x 16" VERSA-LAM@ 2.0 3100 SP	3	3
BM7-2	18' 0"	1-3/4" x 24" VERSA-LAM@ 2.0 3100 SP	2	2
Rim1	12' 0"	1" x 14" BC RIM BOARD OSB	1	10
BLK1	26' 0"	14" BCI@ 4500s-1.8	1	1



I-Joist Plot ID # & Length on Top of Flange



Note: Refer to current Boise Cascade Installation Guide for details not shown.



2ND FLOOR LAYOUT



Caviness Land Development
Master Plan Left
CL-2344 & Options

Scale: 1/4" = 1'-0"
Date: 6-15-17
By: L.LITTLETON
DWG:
Sheet: 1 of 1

200 Emmett Drive, Dunn, N.C. 28334 (910) 892 + 8400

GENERAL NOTES:

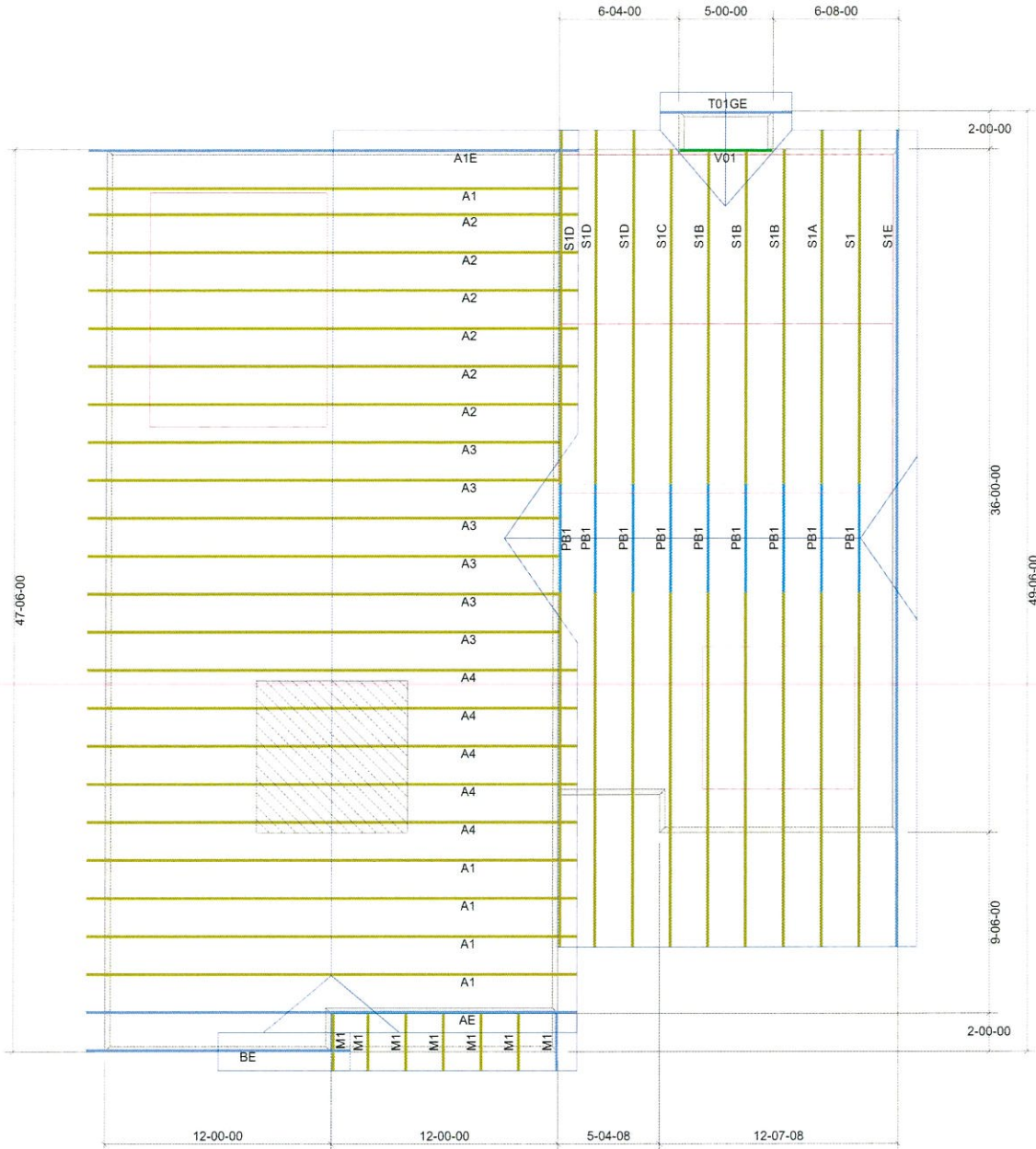
DO NOT CUT OR MODIFY TRUSSES.
 TRUSSES ARE SPACED 24" ON CENTER UNLESS NOTED OTHERWISE.
 REFER TO THE INDIVIDUAL TRUSS DESIGN DRAWINGS FOR THE LOCATION OF LATERAL BRACING AND MULTI-PLY CONNECTION REQUIREMENTS.
 PER ANSI TPI 1-2002 THE TRUSS ENGINEER IS RESPONSIBLE FOR TRUSS TO TRUSS CONNECTIONS AND TRUSS PLY TO PLY CONNECTIONS. THIS TRUSS PLACEMENT PLAN RECOMMENDS TRUSS TO BEARING CONNECTIONS AND TRUSS TO BEAM CONNECTIONS WHICH SHALL BE REVIEWED BY THE BUILDING DESIGNER. IT IS THE RESPONSIBILITY OF THE BUILDING DESIGNER TO RESOLVE ALL ROOF FORCES ADEQUATELY TO THE FOUNDATION.

Hardware List:

A	-	-	-
B	-	-	-
C	-	-	-
D	-	-	-
	-	-	-
	-	-	-
	-	-	-
	-	-	-

ORDER: **Order #**

THIS LAYOUT IS INTENDED FOR THE PURPOSE OF TRUSS LOCATION AND PLACEMENT ONLY. REFER TO THE BUILDING PLANS FOR ACTUAL BUILDING CONSTRUCTION.



DEDICATED TO QUALITY AND EXCELLENCE
 200 EMMETT ROAD
 DUNN, NORTH CAROLINA 28334
 PHONE: 910-892-8400

ROOF LOADING:
 TOP LIVE: 20 PSF
 TOP DEAD: 10 PSF
 BOTTOM DEAD: 10 PSF
 Wind Speed: 130 MPH

PROJECT	LOT Lot		
CUSTOMER	Caviness Land		
MODEL	CL-2344 CP GOL		
SCALE: N T S	DRAWN BY: User designed roof truss	P.O. NUMBER: PO #	ORDER: Order #
PRINT DATE: Approved	REV: datetime	SHIP DATE: Schd Delivery Date	