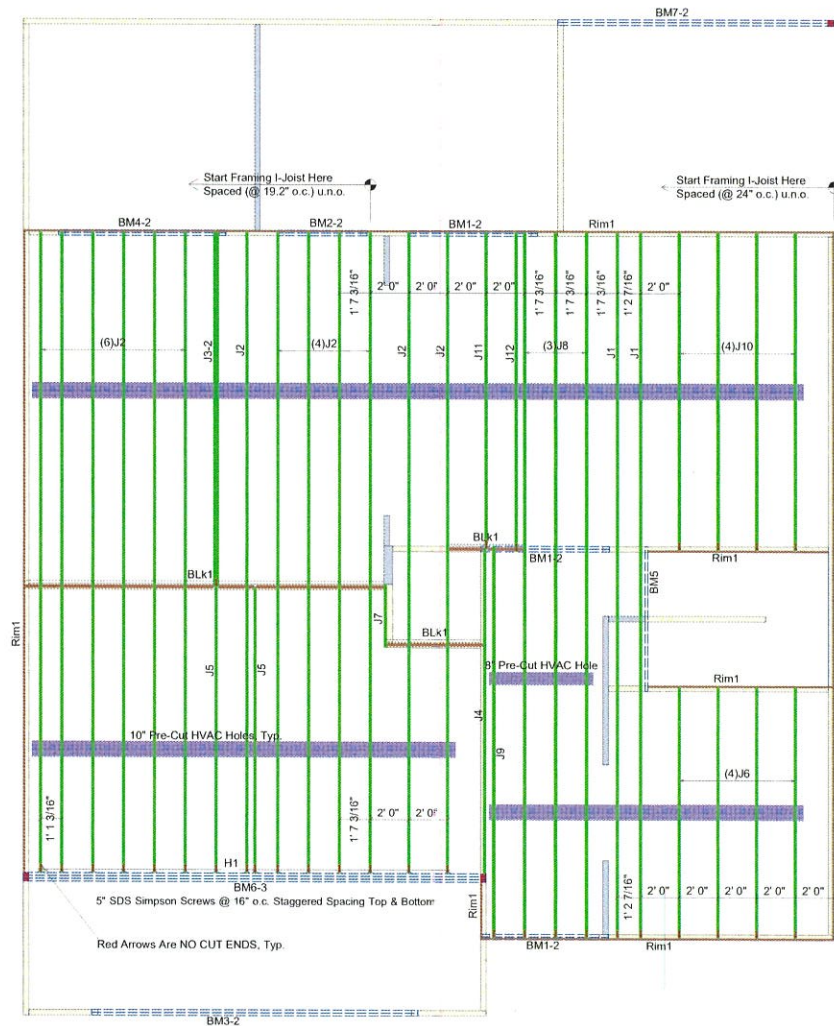


General Notes:

- 1.) "READ" Boise Installation Guide before installation of products.
- 2.) All, I-Joist, LVL beams, and Rim Board must be field cut to length.
- 3.) Contractor must verify and approve the material list.
- 4.) I-Joist may be moved 3" out of its own o.c. spacing, up to 19.2" o.c., to allow for plumbing drops.
- 5.) This layout, is a placement plan and, was designed in accordance with the original design of the structure (unless otherwise noted). See original plans for additional structural notes.
- 6.) Ceramic tile floors should be supported per APA standards. Additional joists may be required.
- 7.) HVAC & PLUMBER, "Review" Boise Installation Guide (Joist Hole Location & Sizing) Chart "BEFORE" cutting the I-Joist product.
- 8.) "Blocking", are Random Length I-joist, Labeled as such.

We Recommend Locating Plumbing Drops & Moving Joist Accordingly Before Installation

Connector Summary				
PlotID	Qty	Manuf	Product	Flange
H1	15	Simpson	IUS 1.81/14	None
5" Screws*	38	Simpson	SDS 5" Screws*	None
Option Screened Porch				
PlotID	Length	Product	Plies	Net Qty
BM7-2	16' 0"	1-3/4" x 11-7/8" VERSA-LAM@ 2.0 3100 SP	2	2
Products				
PlotID	Length	Product	Plies	Net Qty
J1	37' 0"	14" BCI@ 4500s-1.8	1	2
J2	34' 0"	14" BCI@ 4500s-1.8	1	13
J3-2	19' 0"	14" BCI@ 4500s-1.8	2	2
J4	18' 0"	14" BCI@ 4500s-1.8	1	1
J5	16' 0"	14" BCI@ 4500s-1.8	1	2
J6	14' 0"	14" BCI@ 4500s-1.8	1	4
J7	4' 0"	14" BCI@ 4500s-1.8	1	1
J8	37' 0"	14" BCI@ 5000s-1.8	1	3
J9	21' 0"	14" BCI@ 5000s-1.8	1	1
J10	17' 0"	14" BCI@ 5000s-1.8	1	4
J11	17' 0"	14" BCI@ 5000s-1.8	1	1
J12	17' 0"	14" BCI@ 5000s-1.8	1	1
BM1-2	8' 0"	1-3/4" x 9-1/4" VERSA-LAM@ 2.0 3100 SP	2	6
BM2-2	6' 0"	1-3/4" x 9-1/4" VERSA-LAM@ 2.0 3100 SP	2	2
BM3-2	18' 0"	1-3/4" x 11-7/8" VERSA-LAM@ 2.0 3100 SP	2	2
BM4-2	10' 0"	1-3/4" x 11-7/8" VERSA-LAM@ 2.0 3100 SP	2	2
BM5	8' 0"	1-3/4" x 14" VERSA-LAM@ 2.0 3100 SP	1	1
BM6-3	24' 0"	1-3/4" x 24" VERSA-LAM@ 2.0 3100 SP	3	3
Rim1	12' 0"	1" x 14" BC RIM BOARD OSB	1	13
BLK1	25' 0"	14" BCI@ 4500s-1.8	1	1



DN01 DO NOT cut, notch or drill flanges.



Note: Refer to current Boise Cascade Installation Guide for details not shown.

I-Joist Plot ID # & Length on Top of Flange

2nd FLOOR LAYOUT

OJA

Boise I-joist can be offset up to 3" to avoid vertical plumbing.

B12-A

Side Lashed Connection Double End Plate 1/2" x 3/8" Versa-Lam[®] Nail Pattern

12" o.c. 16d anchor nails See chart

Min. Vertical Load (lb per in. L) 2000 3000 4000 5000 6000

Min. Vertical Spacing (in) 24 36 48 60 72

(a) Nail pattern for 3+ piece member must occur on both sides. Nail values may be increased by 15% for snow load roofs, and by 20% for non-snow load roofs where trussing roofs apply.

F13-D

Nail each end with 1/2" x 3/8" (15d) nail

15" minimum end bearing length of all floor and roof details

F5B

Double ICF[®] Joist Connection Filler Block (see literature)

Web/Flange Nailing 17" o.c.

Connections valid for all applications. Contact Boise EWP Engineering for specific conditions.

F10

Backer block (12" wide min) Nail with 1/2" x 3/8" Versa-Lam Install tight to top flange

Joint hanger

Filler block Nail with 16d nails

Backer block required where top mount hanger load exceeds 250 lbs. Install tight to top flange.

F07

See Boise literature for vertical load capacity.

Boise Rimboard

Nail Boise Rimboard to RCP[®] post with 3d nail over each flange.

F08

Solid block all posts from above to bearing below.

F07-A

See Boise literature for vertical load capacity.

Cav-Land Development
CL-2862 (GL)

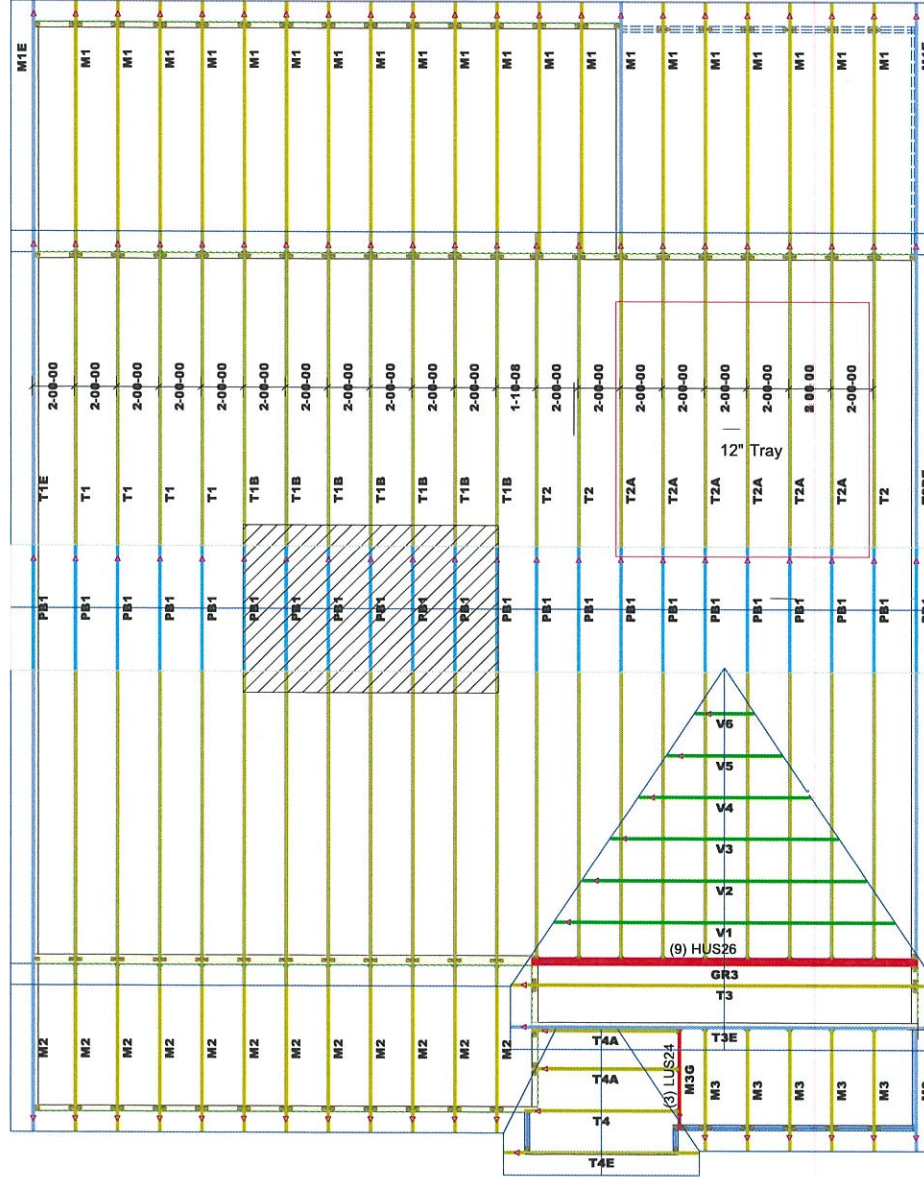
Scale: NTS
Date: 02.12.2018
By: J. Ciferni
DWG:
Sheet: 1 of 1

Boise Cascade

84 LUMBER
Build on what we know.[™]

200 Emmett Drive, Dunn, N.C. 28334 (910) 892 + 8400

THIS LAYOUT IS INTENDED FOR THE PURPOSE OF TRUSS LOCATION AND PLACEMENT ONLY. REFER TO THE BUILDING PLANS FOR ACTUAL BUILDING CONSTRUCTION.



1st Level Roof Area
910.01

2nd Level Roof Area
0



DEDICATED TO QUALITY AND EXCELLENCE
200 EMMETT ROAD
DUNN, NORTH CAROLINA 28334
PHONE: 910-892-8400

PROJECT:	Master CL 2862 CP		
CUSTOMER:	Caviness Land Development		
MODEL:	CL 2862 CP		
QUOTE #:	1800888	PRINT DATE:	6/14/2018
		DRAWN BY:	Rodney Evans
		SCALE:	N.T.S

TOP LIVE LOAD:	20.0 lb/ft ²
TOP DEAD LOAD:	10.0 lb/ft ²
BOTTOM DEAD LOAD:	10.0 lb/ft ²
WIND SPEED:	130 mph

GENERAL NOTES:

- DO NOT CUT OR MODIFY TRUSSES
- TRUSSES ARE SPACED 24" ON CENTER UNLESS OTHERWISE NOTED
- REFER TO THE STRUCTURAL TRUSS DESIGN DRAWINGS FOR THE LOCATION OF LATERAL BRACING AND MULTIPLY CONNECTION REQUIREMENTS.
- PERMISSIBLE CONNECTIONS TRUSS DESIGNER IS RESPONSIBLE FOR TRUSS AND TRUSS TO BEAM CONNECTIONS WHICH SHALL BE REVIEWED BY THE DESIGNER TO RESOLVE ALL ROOF FORCES ADEQUATELY TO THE FOUNDATION.