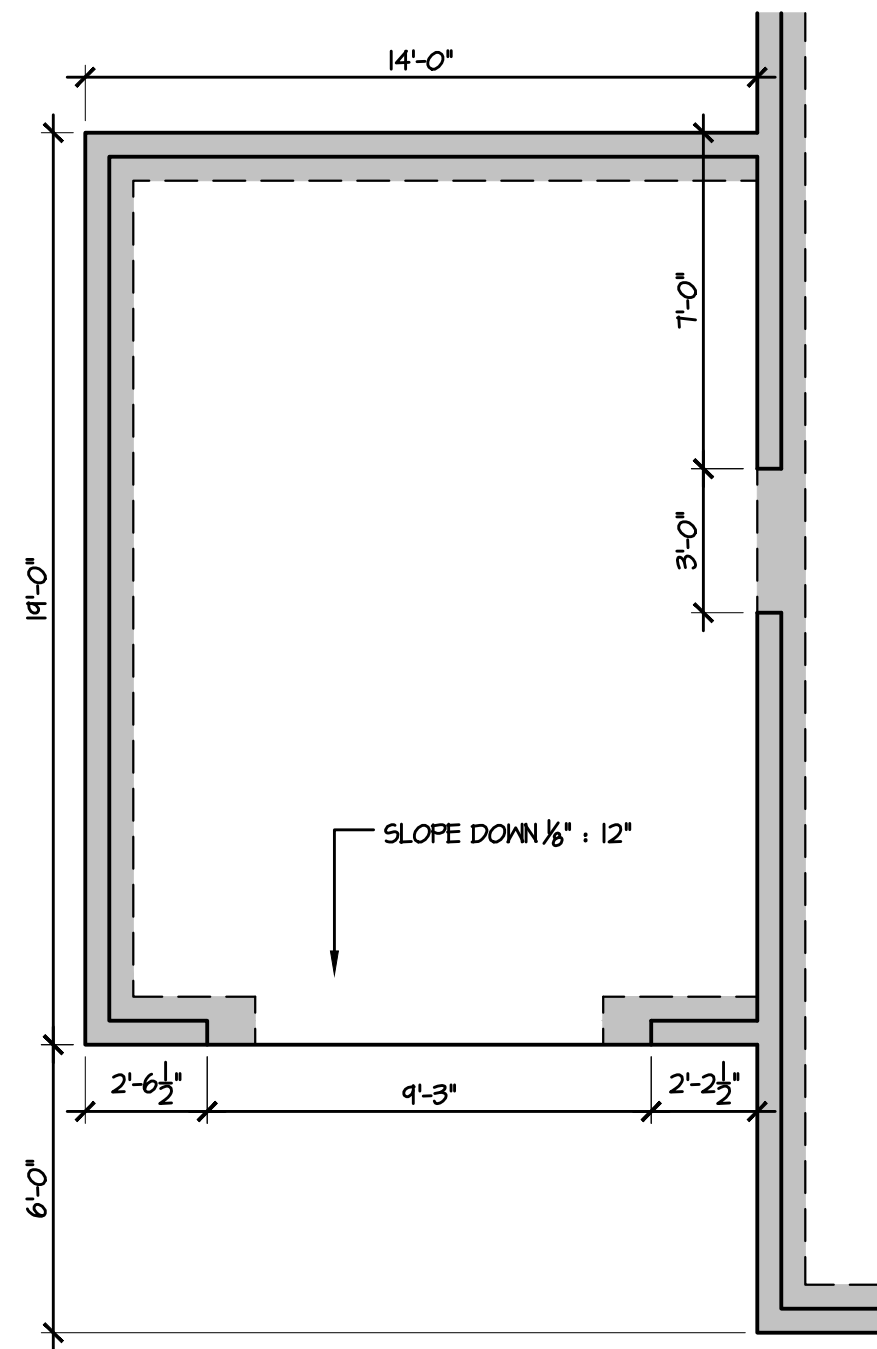
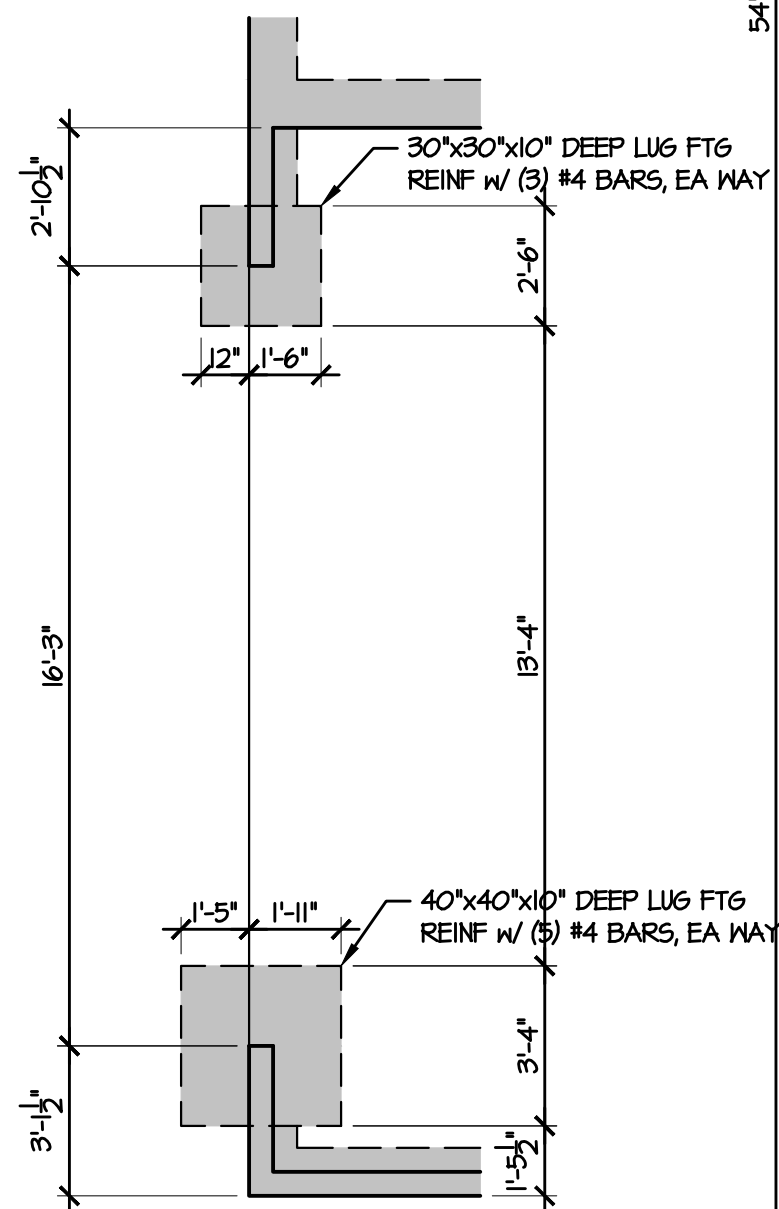


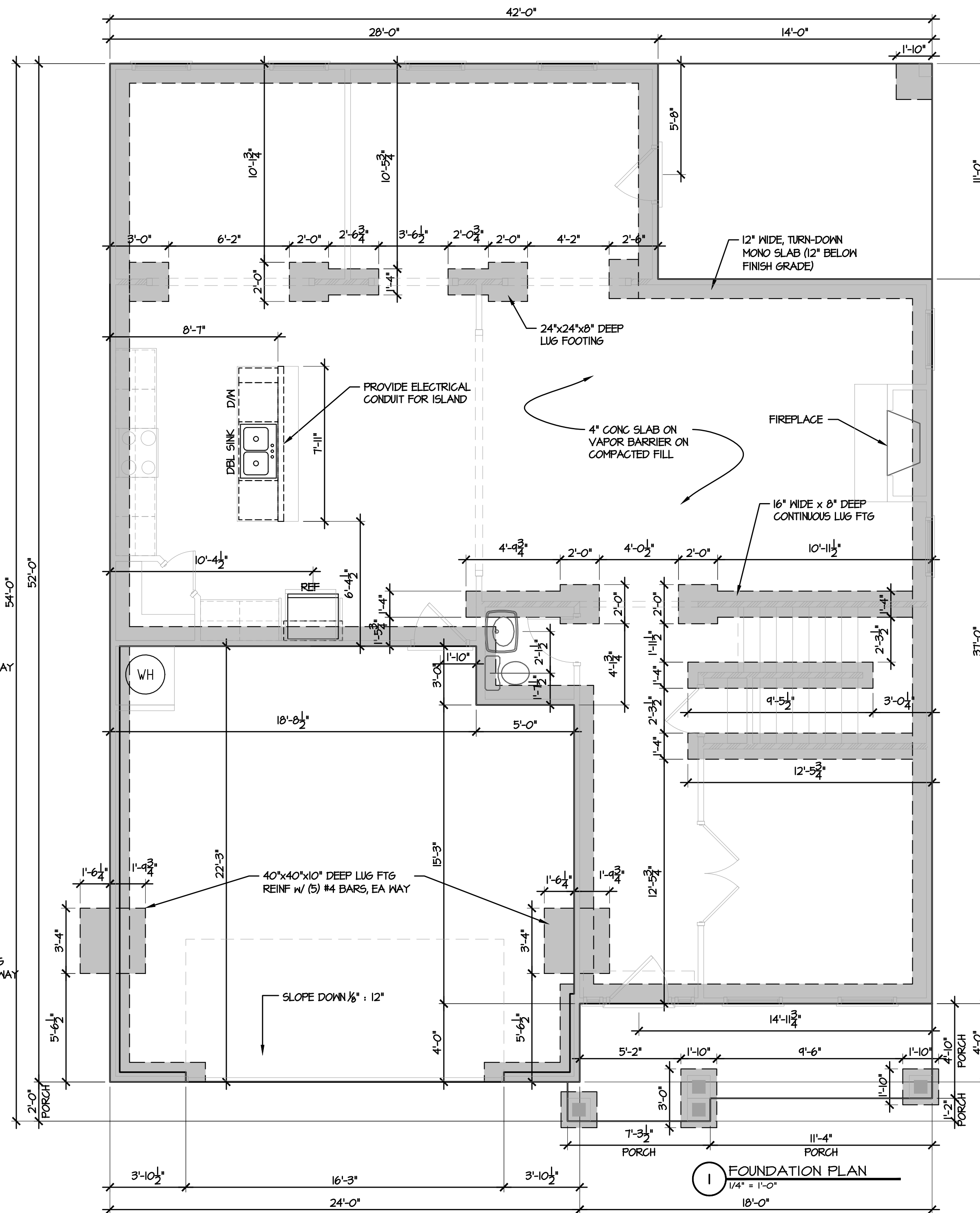
C:\Projects\Caviness Land\CL 2862\CL 2862 CL 5-3-20.dwg, 5/3/2020 10:07:22 AM



3 3rd CAR OPTION
1/4" = 1'-0"



2 SIDE LOAD OPTION
1/4" = 1'-0"



1 FOUNDATION PLAN
1/4" = 1'-0"



TODD TUCKER 34 - 156

© 2019 CavLand
1041-B Robeson St
Fayetteville, NC 28305
Office: 910-339-6330
Fax: 910-339-6333

CL 2862

SLAB PLAN

SCALE:
AS NOTED

DATE:
APRIL 2019

PLAN:
CL 2862

LOT NO:

SHEET NO:

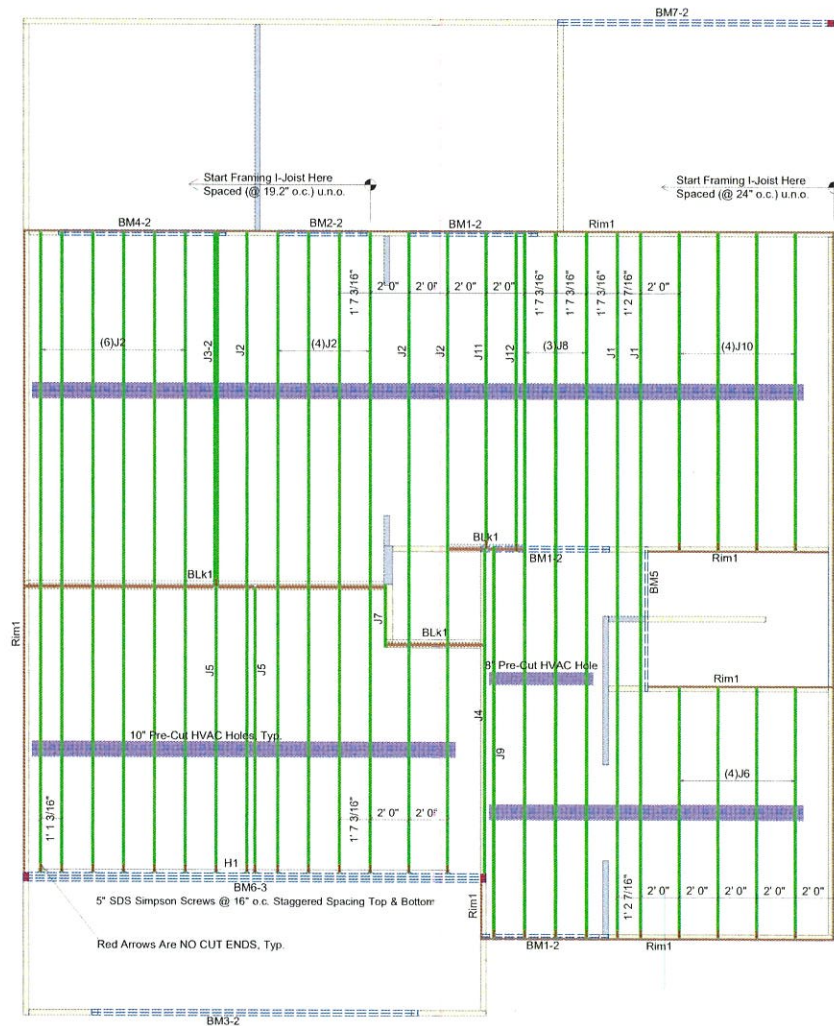
3

General Notes:

- 1.) "READ" Boise Installation Guide before installation of products.
- 2.) All, I-Joist, LVL beams, and Rim Board must be field cut to length.
- 3.) Contractor must verify and approve the material list.
- 4.) I-Joist may be moved 3" out of its own o.c. spacing, up to 19.2" o.c., to allow for plumbing drops.
- 5.) This layout, is a placement plan and, was designed in accordance with the original design of the structure (unless otherwise noted). See original plans for additional structural notes.
- 6.) Ceramic tile floors should be supported per APA standards. Additional joists may be required.
- 7.) HVAC & PLUMBER, "Review" Boise Installation Guide (Joist Hole Location & Sizing) Chart "BEFORE" cutting the I-Joist product.
- 8.) "Blocking", are Random Length I-joist, Labeled as such.

We Recommend Locating Plumbing Drops & Moving Joist Accordingly Before Installation

Connector Summary				
PlotID	Qty	Manuf	Product	Flange
H1	15	Simpson	IUS 1.81/14	None
5" Screws*	38	Simpson	SDS 5" Screws*	None
Option Screened Porch				
PlotID	Length	Product	Plies	Net Qty
BM7-2	16' 0"	1-3/4" x 11-7/8" VERSA-LAM@ 2.0 3100 SP	2	2
Products				
PlotID	Length	Product	Plies	Net Qty
J1	37' 0"	14" BCI@ 4500s-1.8	1	2
J2	34' 0"	14" BCI@ 4500s-1.8	1	13
J3-2	19' 0"	14" BCI@ 4500s-1.8	2	2
J4	18' 0"	14" BCI@ 4500s-1.8	1	1
J5	16' 0"	14" BCI@ 4500s-1.8	1	2
J6	14' 0"	14" BCI@ 4500s-1.8	1	4
J7	4' 0"	14" BCI@ 4500s-1.8	1	1
J8	37' 0"	14" BCI@ 5000s-1.8	1	3
J9	21' 0"	14" BCI@ 5000s-1.8	1	1
J10	17' 0"	14" BCI@ 5000s-1.8	1	4
J11	17' 0"	14" BCI@ 5000s-1.8	1	1
J12	17' 0"	14" BCI@ 5000s-1.8	1	1
BM1-2	8' 0"	1-3/4" x 9-1/4" VERSA-LAM@ 2.0 3100 SP	2	6
BM2-2	6' 0"	1-3/4" x 9-1/4" VERSA-LAM@ 2.0 3100 SP	2	2
BM3-2	18' 0"	1-3/4" x 11-7/8" VERSA-LAM@ 2.0 3100 SP	2	2
BM4-2	10' 0"	1-3/4" x 11-7/8" VERSA-LAM@ 2.0 3100 SP	2	2
BM5	8' 0"	1-3/4" x 14" VERSA-LAM@ 2.0 3100 SP	1	1
BM6-3	24' 0"	1-3/4" x 24" VERSA-LAM@ 2.0 3100 SP	3	3
Rim1	12' 0"	1" x 14" BC RIM BOARD OSB	1	13
BLK1	25' 0"	14" BCI@ 4500s-1.8	1	1



DN01 DO NOT cut, notch or drill flanges.



Note: Refer to current Boise Cascade Installation Guide for details not shown.

I-Joist Plot ID # & Length on Top of Flange

2nd FLOOR LAYOUT

OJA

Boise I-joist can be offset up to 3" to avoid vertical plumbing.

B12-A

Side Lapped Connection
Double End Plate 1.5x Versa-Lam[®]
Nail Pattern

12" o.c.
16d anchor nails
See chart

Max. Uniform Load (see section 4.1)

Span (ft)

Depth (in)

1. (a) Nail pattern for 3-ply member must occur on both sides.
Nail values may be increased by 15% for snow load roofs, and by 20% for roof snow load roofs where trussing roofs apply.

F13-D

Nail each end with 1-3/4" (10d) nail

15d minimum end bearing length of all floor and roof details

F58

Double ICF[®] Joist Connection

Filler Block (see literature)

Web/Flange Nailing 17" o.c.

Connections valid for all applications. Contact Boise EWP Engineering for specific conditions.

F10

Backer block (12" wide min)
Nail with top 1/2" nails
Install tight to top flange

Joint hanger

Filler block
Nail with 16d nails

Backer block required where top moment hanger load exceeds 250 lbs. Install tight to top flange.

F07

See Boise literature for vertical load capacity.

Boise Rimboard

Nail Boise Rimboard to RCP post with 3x nail on each flange.

F08

Solid block, all posts from above to bearing below.

F07-A

See Boise literature for vertical load capacity.

Cav-Land Development
CL-2862 (GL)

Scale: NTS
Date: 02.12.2018
By: J. Ciferni
DWG:
Sheet: 1 of 1

Boise Cascade

84 LUMBER
Build on what we know.

200 Emmett Drive, Dunn, N.C. 28334 (910) 892 + 8400

