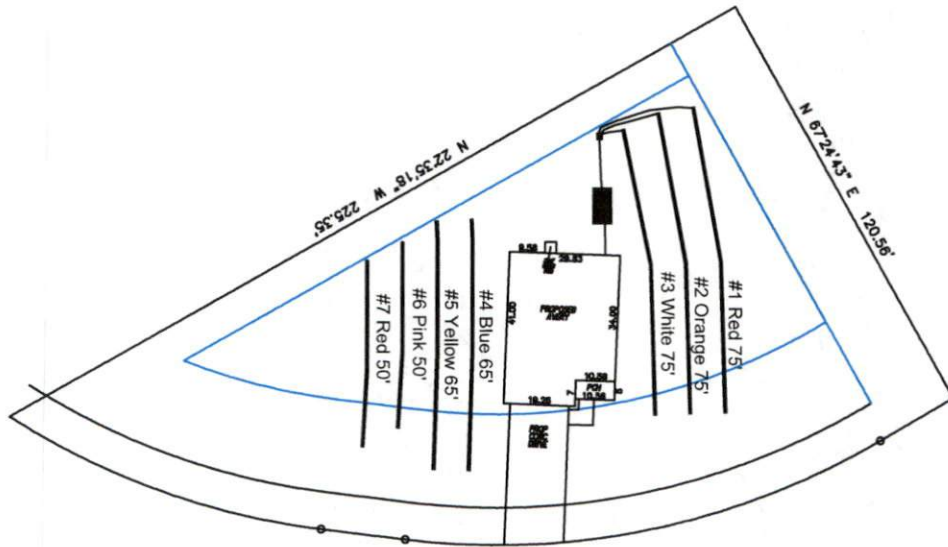


Avery Pond 3-Bedroom Septic Proposal Lot #200



Mineral Spring Ln

System: Gravity to D-Box
 Lines: 1-3 (225')
 0.4 LTAR
 18-24" Trench Bottom
 Accepted Status System
 Repair: Gravity to Serial Dist.
 Lines: 4-7 (230')
 0.4 LTAR
 18-24" Trench Bottom
 Accepted Status System

GRAPHIC SCALE
 1" = 50'



Adams
 Soil Consulting
 919-414-6761
 Job #708

Avery Pond
Lot #200

3-Bedroom Home (360 gal./day)

<u>LINE #</u>	<u>COLOR</u>	<u>BS</u>	<u>HI</u>	<u>FS</u>	<u>ELEVATION</u>	<u>LINE LENGTH</u>	<u>Design Length</u>
TBM		2.0		100.0		<u>in field</u>	<u>installation</u>
INST. 1			102.0				
1	Red			2.9	99.1	80	75
2	Orange			2.9	99.1	80	75
3	White			2.9	99.1	80	75
4	Blue			3.4	98.6	70	65
5	Yellow			3.5	98.5	65	65
6	Pink			3.6	98.4	59	50
7	Red			3.7	98.3	55	50
Total							

	<u>System</u>	<u>Repair</u>
	Lines 1-3	Lines 4-7
System Type	Accepted Status System EZ-FLOW	Accepted Status System EZ-FLOW
Suggested Soil LTAR	0.375	0.38
Total Line Length	225	230
Square Footage	675	690
Proposed Trench Bottom	18-24"	18-24"
Distribution Method	Gravity to D-Box	Gravity to Serial Dist.