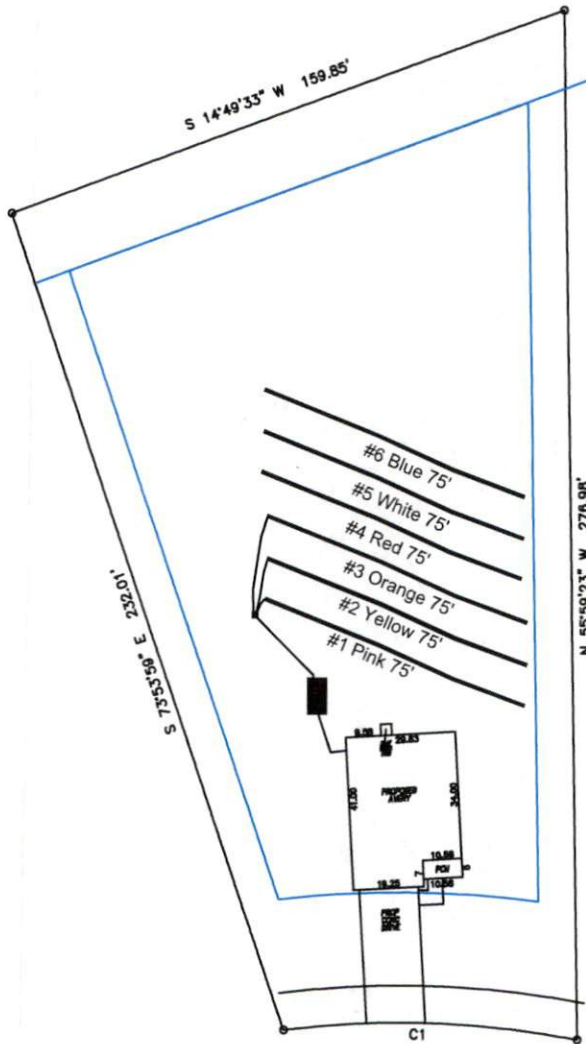


Avery Pond 3-Bedroom Septic Proposal Lot #75



Mineral Spring Ln

System: Gravity to D-Box Lines: 1-4 (225') 0.4 LTAR 24" Trench Bottom Accepted Status System Repair: Gravity to D-Box Lines: 4-6 (225') 0.4 LTAR 24" Trench Bottom Accepted Status System
--

GRAPHIC SCALE
1" = 50'



Adams Soil Consulting 919-414-6761 Job #708
--

Avery Pond
Lot #75

3-Bedroom Home (360 gal./day)

<u>LINE #</u>	<u>COLOR</u>	<u>BS</u>	<u>HI</u>	<u>FS</u>	<u>ELEVATION</u>	<u>LINE LENGTH</u>	<u>Design Length</u>
TBM		2.0		100.0		<u>in field</u>	<u>installation</u>
INST. 1			102.0				
1	Pink			4.0	98	80	75
2	Yellow			4.1	97.9	80	75
3	Orange			4.3	97.7	80	75
4	Red			4.4	97.6	80	75
5	White			4.6	97.4	80	75
6	Blue			4.8	97.2	80	75
Total							

	<u>System</u> Lines 1-3	<u>Repair</u> Lines 4-6
System Type	Accepted Status System EZ-FLOW	Accepted Status System EZ-FLOW
Suggested Soil LTAR	0.375	0.38
Total Line Length	225	225
Square Footage	675	675
Proposed Trench Bottom	24"	24"
Distribution Method	Gravity to D-Box	Gravity to D-Box