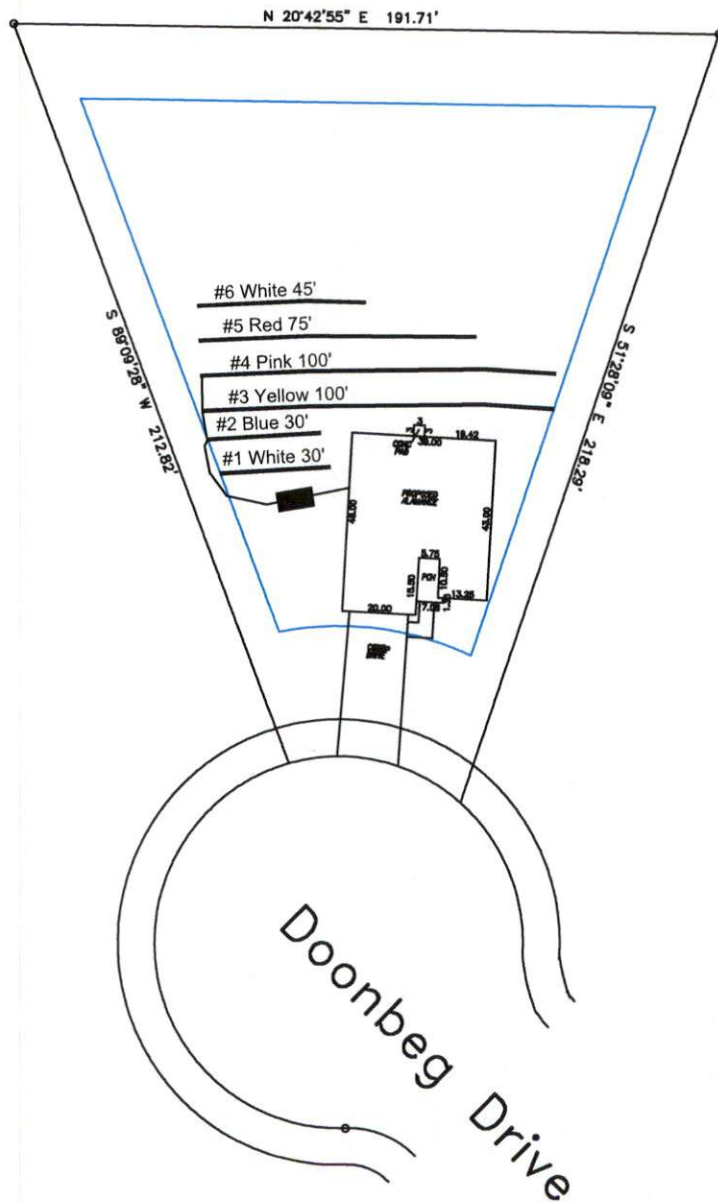


Avery Pond 3-Bedroom Septic Proposal Lot #161



System: Gravity to Serial Dist
 Lines: 2-4 (225')
 0.4LTAR
 18-24" Trench Bottom
 Accepted Status System
 Repair: Pressure Manifold
 Lines: 1, 5-6 (150')
 0.4 LTAR
 18" Trench Bottom
 T&J Panel 50% Reduction System

GRAPHIC SCALE
 1" = 50'



Adams
 Soil Consulting
 919-414-6761
 Job #708

Avery Pond
Lot #161

3-Bedroom Home (360 gal./day)

<u>LINE #</u>	<u>COLOR</u>	<u>BS</u>	<u>HI</u>	<u>FS</u>	<u>ELEVATION</u>	<u>LINE LENGTH</u>	<u>Design Length</u>
TBM		2.0		100.0		<u>in field</u>	<u>installation</u>
INST. 1			102.0				
1	White			5.7	96.3	30	30
2	Blue			6.1	95.9	30	30
3	Yellow			6.6	95.4	100	100
4	Pink			7	95	110	100
5	Red			7.4	94.6	75	75
6	White			7.7	94.3	45	45

Total

	<u>System</u>	<u>Repair</u>
	Lines 2-4	Lines 1, 5-6
System Type	Accepted Status System EZ-FLOW	50% Reduction System T&J Panel
Suggested Soil LTAR	0.40	0.40
Total Line Length	230	150
Square Footage	690	450
Proposed Trench Bottom	24"	24"
Distribution Method	Gravity to Serial Dist.	Pressure Manifold to T& J Panel System