

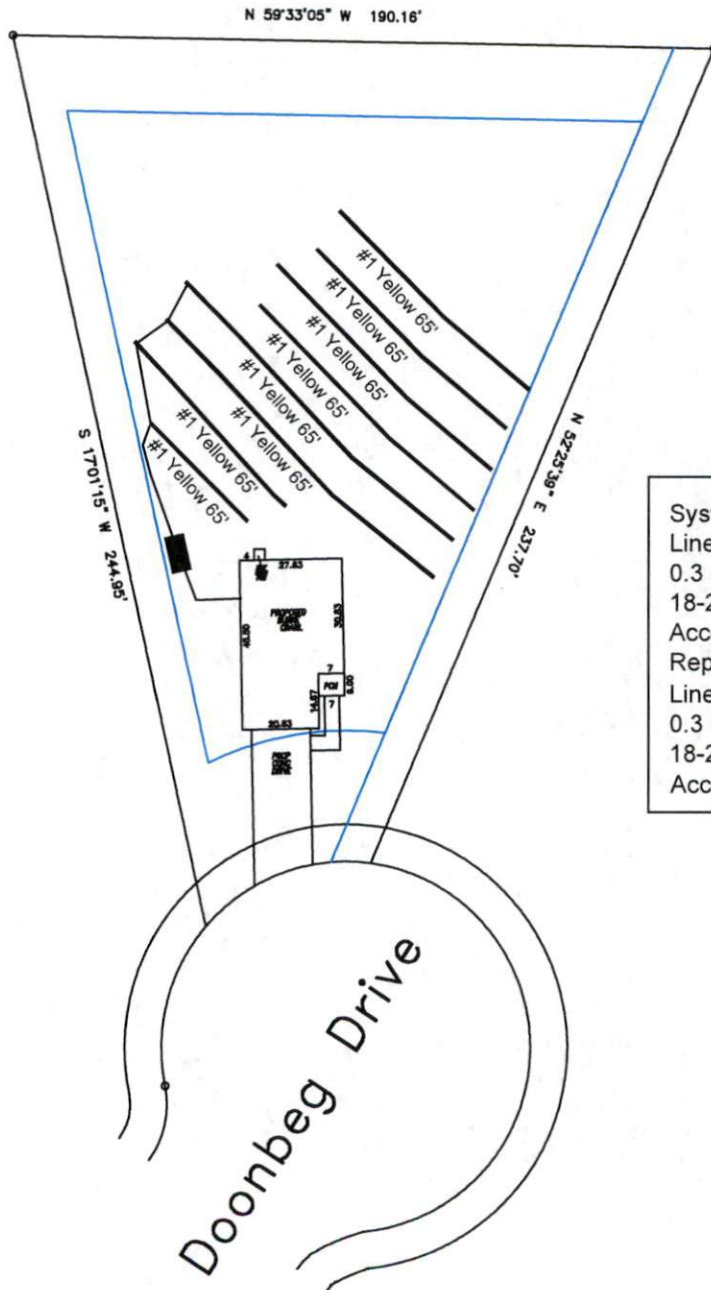
**Avery Pond**  
**Lot #159**

3-Bedroom Home (360 gal./day)

<u>LINE #</u>	<u>COLOR</u>	<u>BS</u>	<u>HI</u>	<u>FS</u>	<u>ELEVATION</u>	<u>LINE LENGTH</u>	<u>Design Length</u>
TBM		2.0		100.0		<u>in field</u>	<u>installation</u>
INST. 1			102.0				
1	Yellow			4.8	97.2	40	40
2	Red			5.8	96.2	68	60
3	White			6.8	95.2	110	100
4	Blue			7.8	94.2	100	100
5	Pink			8.7	93.3	90	80
6	Orange			9.7		85	80
7	Yellow			10.5		75	70
8	Red			11.3		70	70
Total							

	<u>System</u>	<u>Repair</u>
	Lines 1-4	Lines 5-8
<b>System Type</b>	Accepted Status System	Accepted Status System
	EZ-FLOW	EZ-FLOW
Suggested Soil LTAR	0.30	0.30
<b>Total Line Length</b>	255	260
<b>Square Footage</b>	765	780
<b>Proposed Trench Bottom</b>	18"	18"
<b>Distribution Method</b>	Gravity to Serial Dist.	Gravity to Serial Dist.

# Avery Pond 3-Bedroom Septic Proposal Lot #159



System: Gravity to Serial Dist
Lines: 1-4 (300')
0.3 LTAR
18-24" Trench Bottom
Accepted Status System
Repair: Gravity to Serial Dist
Lines: 5-8 (300')
0.3 LTAR
18-24" Trench Bottom
Accepted Status System

GRAPHIC SCALE  
1" = 50'



Adams Soil Consulting 919-414-6761 Job #708
--