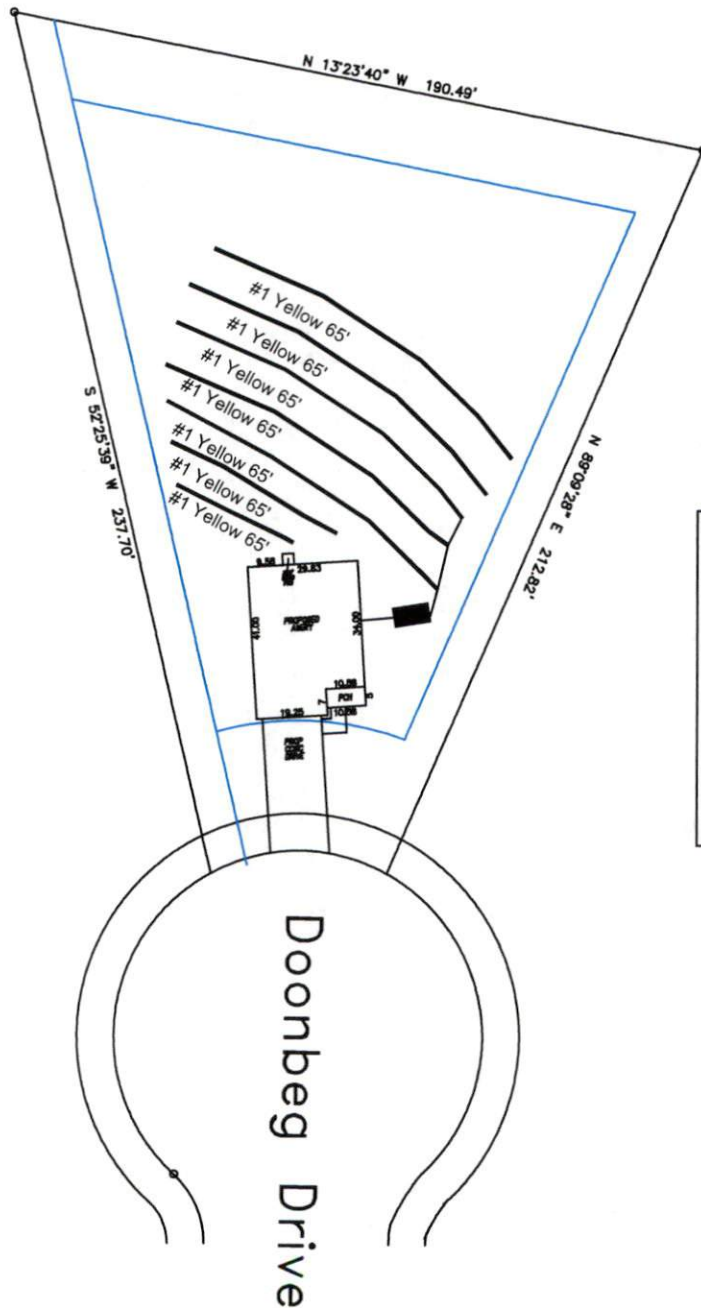


Avery Pond 3-Bedroom Septic Proposal Lot #160



System: Gravity to Serial Dist
 Lines: 3-5 (270')
 0.35 LTAR
 18-24" Trench Bottom
 Accepted Status System
 Repair: Pressure Manifold
 Lines: 1-2, 6-8 (280')
 0.35 LTAR
 12" Trench Bottom
 Accepted Status System

GRAPHIC SCALE
 1" = 50'



Adams
 Soil Consulting
 919-414-6761
 Job #708

Avery Pond
Lot #160

3-Bedroom Home (360 gal./day)

<u>LINE #</u>	<u>COLOR</u>	<u>BS</u>	<u>HI</u>	<u>FS</u>	<u>ELEVATION</u>	<u>LINE LENGTH</u>	<u>Design Length</u>
TBM		2.0		100.0		<u>in field</u>	<u>installation</u>
INST. 1			102.0				
1	Yellow			4.5	97.5	35	30
2	Orange			5.3	96.7	50	50
3	Pink			6.1	95.9	100	90
4	Yellow			6.9	95.1	100	90
5	Orange			7.9	94.1	100	90
6	Pink			9.1	92.9	100	100
7	Yellow			10.3	91.7	100	100
Total							

	<u>System</u>	<u>Repair</u>
	Lines 3-5	Lines 1-2, 6-7
System Type	Accepted Status System	Accepted Status System
	EZ-FLOW	EZ-FLOW
Suggested Soil LTAR	0.35	0.35
Total Line Length	270	280
Square Footage	810	840
Proposed Trench Bottom	18"	12"
Distribution Method	Gravity to Serial Dist.	Gravity to Serial Dist.