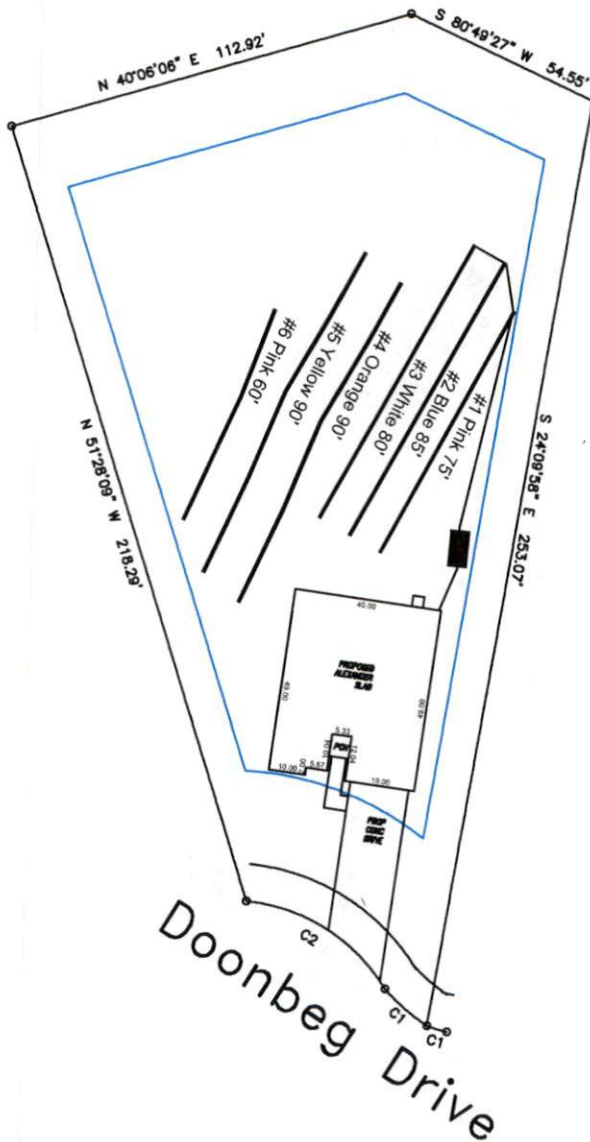


Avery Pond 3-Bedroom Septic Proposal Lot #162



System: Gravity to Serial Dist
 Lines: 1-3 (240')
 0.375 LTAR
 18-24" Trench Bottom
 Accepted Status System
 Repair: Gravity to Serial Dist.
 Lines: 4-6(240')
 0.375 LTAR
 18-24" Trench Bottom
 Accepted Status System

Doonbeg Drive
 C2
 C1
 C3

GRAPHIC SCALE
 1" = 50'



Adams
 Soil Consulting
 919-414-6761
 Job #708

Avery Pond
Lot #162

3-Bedroom Home (360 gal./day)

<u>LINE #</u>	<u>COLOR</u>	<u>BS</u>	<u>HI</u>	<u>FS</u>	<u>ELEVATION</u>	<u>LINE LENGTH</u>	<u>Design Length</u>
TBM		2.0		100.0		<u>in field</u>	<u>installation</u>
INST. 1			102.0				
1	Pink			4.5	97.5	75	75
2	Blue			5.3	96.7	90	85
3	White			6.1	95.9	80	80
4	Orange			6.9	95.1	105	90
5	Yellow			7.9	94.1	91	90
6	Pink			9.1	92.9	65	60
7	Red			10.3	91.7	40	not used
Total							

	<u>System</u>	<u>Repair</u>
	Lines 1-3	Lines 4-7
System Type	Accepted Status System EZ-FLOW	Accepted Status System EZ-FLOW
Suggested Soil LTAR	0.375	0.38
Total Line Length	240	240
Square Footage	720	720
Proposed Trench Bottom	18-24"	18"
Distribution Method	Gravity to Serial Dist.	Gravity to Serial Dist.