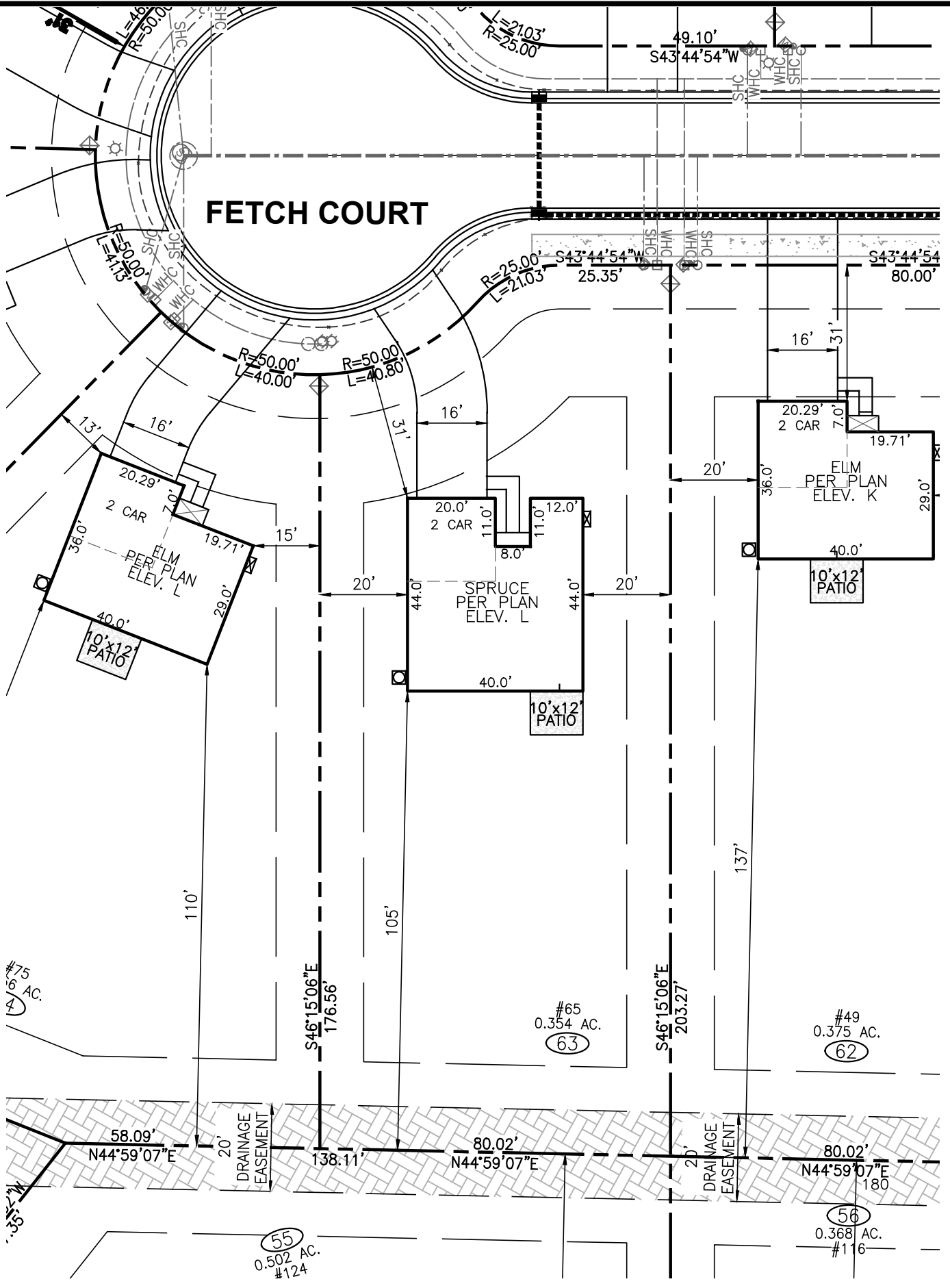


FETCH COURT



#75
0.16 AC.
#4

#65
0.354 AC.
#63

#49
0.375 AC.
#62

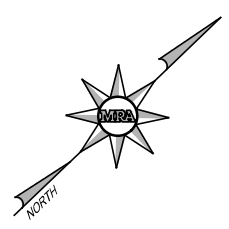
#55
0.502 AC.
#124

#56
0.368 AC.
#116

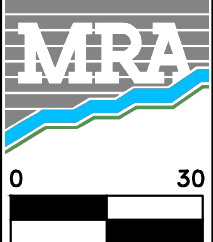
| | |
|------------|-----------------------|
| FRONT | 30' MIN. |
| SIDE | 10' MIN. (20' CORNER) |
| REAR | 20' MIN. |
| IMPERVIOUS | 2,861 S.F. (19%) |

| | |
|-------------|-----------|
| DRIVEWAY | 796 SF |
| LEADWALK | 52 SF |
| PUBLIC WALK | 158 SF |
| SOD | 12,943 SF |
| WHC | 31 LF |
| SHC | 32 LF |
| PATIO | 120 SF |
| HSE FACING | N. WEST |

- LEGEND**
- ⊗ ELEC. METER
 - ⊙ A/C UNIT



BUILDER
 RYAN HOMES
 5734 TRINITY ROAD, SUITE 200
 RALEIGH, NC 27607
 PHONE: 919-233-0793



MORRIS & RITCHIE ASSOCIATES OF NC, PC
 ENGINEERS, ARCHITECTS, PLANNERS, SURVEYORS AND LANDSCAPE ARCHITECTS
 5605 CHAPEL HILL ROAD, SUITE 112
 RALEIGH, NC 27607 PHONE:
 984-200-2103
 FIRM LICENSES C-4182 & G-492
 www.mragta.com

SITE PLAN
 FOR
QUAIL GLEN
 PHASE 4A
LOT 63 #65 FETCH COURT
 BLACK RIVER TOWNSHIP
 HARNETT COUNTY NORTH CAROLINA

SCALE: 1"=30' DATE: JUNE 18, 2020 DRAWN BY: M.H. DESIGN BY: M.H. REVIEW BY: D.AL. JOB NO.: 20314