

Takla Engineering, PLLC



Alfred A. Takla, PE
 AlfredTakla@TaklaEngr.com
 NC PE License # 047507

Andy A. Takla, PE
 AndyTakla@TaklaEngr.com
 NC PE License # 050695

**Consulting.
 Design.
 Efficiency.**

NC Firm License # P-1952

PO Box 71298 Durham, NC 27722
 Office@TaklaEngr.com 919-258-2648



Project: Quail Glen Lot 55

Location: Angier, NC

Company: NVR

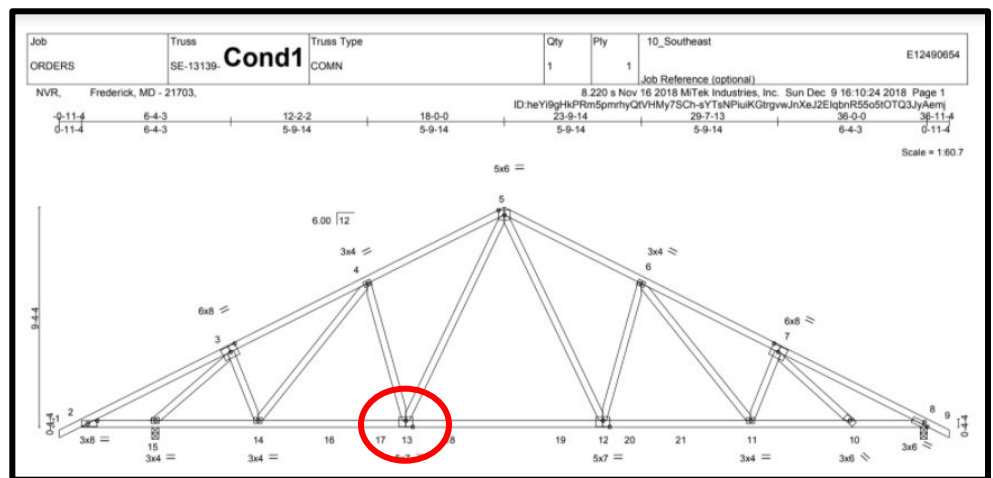
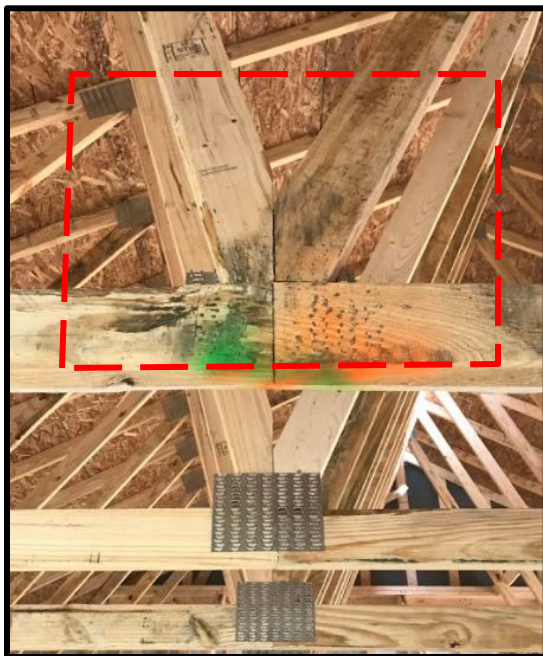
Care Of: Tim Collins

Subject: Roof Truss Repairs

As requested, Andy A. Takla, PE prepared this report on August 18th, 2020 to provide a repair the missing/damaged mending plate at one side of roof truss SE 13139 at bottom chord joint 13. See pictures below for reference.

Based on evaluations and our experiences with similar conditions we recommend the following:

- 1) Install a 30"x30"x7/16" OSB gusset plate to the one side of the roof truss joint which lacks the mending plate.
- 2) Center the gusset plate horizontally on the joint with the bottom edge of gusset plate flush with bottom edge of bottom chord.
- 3) Attach using (2) 10d 1.5" long nails at 4" on center to all adjoining truss members.



Limitations of Inspection: Services provided are in accordance with the standard of practice for structural engineering, the North Carolina Residential Code (2018 edition) and within the limits imposed by scope, schedule and budget. The determinations contained in this report are based on conditions observed at the time of the evaluation. No guarantees or warranties, expressed or implied, under this Agreement or otherwise, shall be construed in connection with services provided. Sequencing, shoring, means and methods of construction are considered beyond the scope of this report. All information used to form decisions and recommendations provided to engineer are taken as truthful. Takla Engineering assumes no responsibility for untruthful statements provided by any party. Lastly, while every effort has been made to ensure accuracy in the preparation of these documents, the maker cannot guarantee against human error nor evaluations of structural elements which are concealed from visual inspection.

