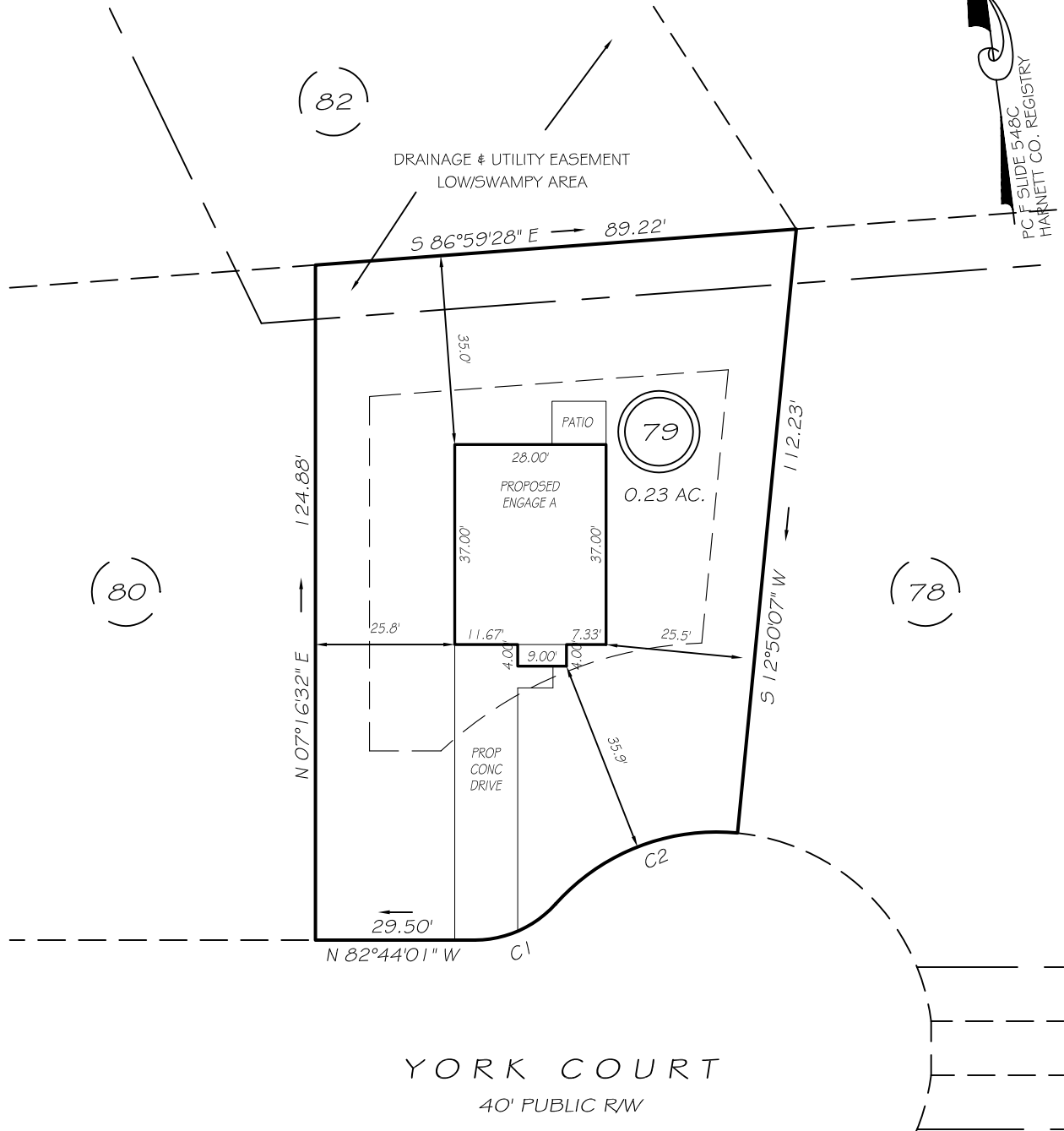


I, MICHAEL P. GRIFFIN, certify that under my direction and supervision this map was drawn from an actual field survey; that the error of closure of the survey as calculated by coordinates is 1: 10,000+; that the area shown hereon was calculated by coordinates.
 Witness my hand and seal this day of MONTH 2020.



PC F SLIDE 548C.
 HARNETT CO. REGISTRY

REVISION: REMOVE SETBACKS PER COVENANTS 7/8/20
 REVISION: NEW SETBACKS 7/7/20
 C1 R=20.00' L=16.82' N73°10'51"E 16.33'
 C2 R=40.00' L=37.52' S75°57'38"W 36.16'

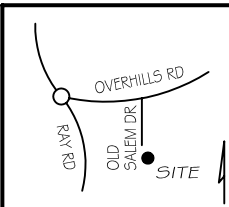
EASEMENTS ARE HEREBY RESERVED BY THE DEVELOPER ON, OVER, UNDER, ABOVE AND THROUGH A STRIP OF LAND TEN FEET IN WIDTH ALONG EACH SIDE LOT LINE AND FIFTEEN FEET IN WIDTH ALONG EACH REAR LOT LINE AND FRONT LOT LINE FOR DRAINAGE, WATER AND SEWAGE INSTALLATION AND MAINTENANCE AND FOR OTHER UTILITY PURPOSES.

SETBACKS

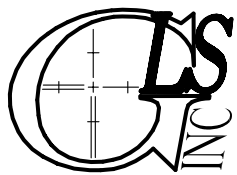
FRONT	35'
REAR	25'
SIDE	10'

LEGEND

EIP	EXISTING IRON PIPE	FES	FLARED END SECTION
IPS	IRON PIPE SET	WM	WATER METER
RAW	RIGHT OF WAY	CO	CLEAN OUT
N/F	NOW OR FORMERLY	FH	FIRE HYDRANT
EIS	EXISTING IRON STAKE	CB	CATCH BASIN



PRELIMINARY
 NOT FOR RECORDATION,
 SALES OR CONVEYANCE



GRIFFIN LAND SURVEYING, INC.
 P. O. BOX 148
 FUQUAY-VARINA, NC 27526
 (919) - 567 - 1963

PLOT PLAN
 FOR
H & H HOMES
COUNTRY SQUIRE ESTATES
LOT 79
 YORK COURT
 NORTH CAROLINA
 HARNETT CO. ANDERSON CREEK TWSP

DRAWN BY NMF	DATE 5/19/20
CHECKED BY MPG	SCALE 1" = 30'