

**Avery Pond**

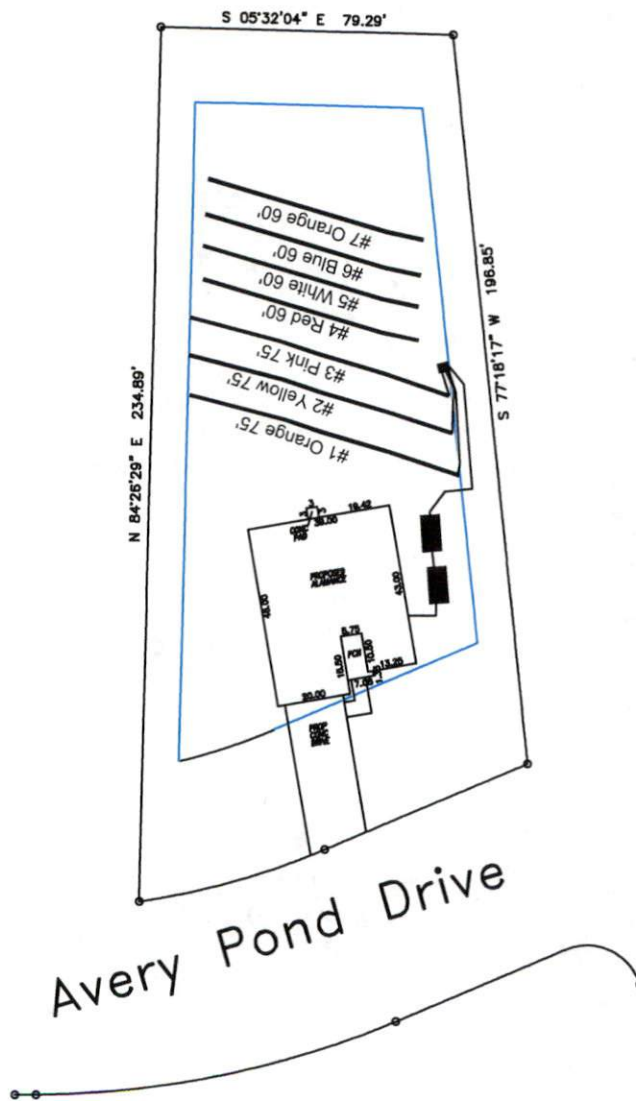
**Lot #111**

3-Bedroom Home (360 gal./day)

<u>LINE #</u>	<u>COLOR</u>	<u>BS</u>	<u>HI</u>	<u>FS</u>	<u>ELEVATION</u>	<u>LINE LENGTH</u>	<u>Design Length</u>
TBM		2.0		100.0		<u>in field</u>	<u>installation</u>
INST. 1			102.0				
1	Yellow			1.4	100.6	75	75
2	Orange			1.7	100.3	75	75
3	Blue			2	100	75	75
4	White			2.3	99.7	70	60
5	Red			2.5	99.5	70	60
6	Pink			2.7	99.3	70	60
7	Yellow			2.9	99.1	70	60
8	Orange			3.1	98.9	70	not used
Total							

	<u>System</u>	<u>Repair</u>
	Lines 1-3	Lines 4-7
<b>System Type</b>	Accepted Status System EZ-FLOW	Accepted Status System EZ-FLOW
Suggested Soil LTAR	0.400	0.400
<b>Total Line Length</b>	225	240
<b>Square Footage</b>	675	720
<b>Proposed Trench Bottom</b>	24"	24"
<b>Distribution Method</b>	Pump to D-Box	Pump to D-Box

# Avery Pond 3-Bedroom Septic Proposal Lot #111



System: Pump to D-Box  
 Lines: 1-3 (225')  
 0.4 LTAR  
 24" Trench Bottom  
 Accepted Status System  
 Repair: Pump to D-Box  
 Lines: 4-7 (240')  
 0.4 LTAR  
 24" Trench Bottom  
 Accepted Status System

Avery Pond Drive

GRAPHIC SCALE  
 1" = 50'



Adams  
 Soil Consulting  
 919-414-6761  
 Job #708