

Avery Pond

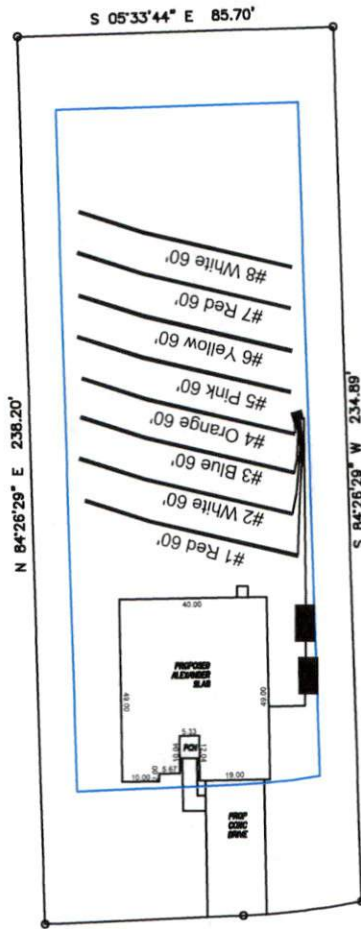
Lot #110

3-Bedroom Home (360 gal./day)

| <u>LINE #</u> | <u>COLOR</u> | <u>BS</u> | <u>HI</u> | <u>FS</u> | <u>ELEVATION</u> | <u>LINE LENGTH</u> | <u>Design Length</u> |
|---------------|--------------|-----------|-----------|-----------|------------------|--------------------|----------------------|
| TBM | | 2.0 | | 100.0 | | <u>in field</u> | <u>installation</u> |
| INST. 1 | | | 102.0 | | | | |
| 1 | Red | | | 4.5 | 97.5 | 60 | 60 |
| 2 | White | | | 4.2 | 97.8 | 60 | 60 |
| 3 | Blue | | | 3.9 | 98.1 | 60 | 60 |
| 4 | Orange | | | 3.6 | 98.4 | 60 | 60 |
| 5 | Pink | | | 3.3 | 98.7 | 60 | 60 |
| 6 | Yellow | | | 3 | 99 | 60 | 60 |
| 7 | Red | | | 2.7 | 99.3 | 60 | 60 |
| 8 | White | | | 2.5 | 99.5 | 60 | 60 |
| Total | | | | | | | |

| | <u>System</u> | <u>Repair</u> |
|-------------------------------|-----------------------------------|-----------------------------------|
| | Lines 1-4 | Lines 5-8 |
| System Type | Accepted Status System EZ-FLOW | Accepted Status System EZ-FLOW |
| Suggested Soil LTAR | 0.400 | 0.400 |
| Total Line Length | 240 | 240 |
| Square Footage | 720 | 720 |
| Proposed Trench Bottom | 24" | 24" |
| Distribution Method | Pump to D-Box | Pump to D-Box |

Avery Pond 3-Bedroom Septic Proposal Lot #110



System: Pump to D-Box
 Lines: 1-4 (240')
 0.4 LTAR
 24" Trench Bottom
 Accepted Status System
 Repair: Pump to D-Box
 Lines: 5-8 (240')
 0.4 LTAR
 24" Trench Bottom
 Accepted Status System

Avery Pond Drive

GRAPHIC SCALE
 1" = 50'



Adams
 Soil Consulting
 919-414-6761
 Job #708