

Avery Pond

Lot #112

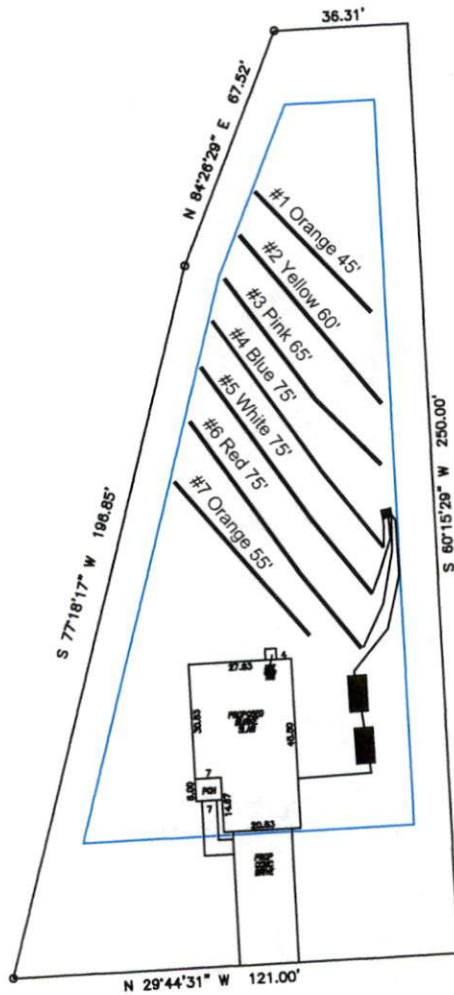
3-Bedroom Home (360 gal./day)

<u>LINE #</u>	<u>COLOR</u>	<u>BS</u>	<u>HI</u>	<u>FS</u>	<u>ELEVATION</u>	<u>LINE LENGTH</u>	<u>Design Length</u>
TBM		2.0		100.0		<u>in field</u>	<u>installation</u>
INST. 1			102.0				
1	Orange			4.6	97.4	45	45
2	Yellow			4.9	97.1	60	60
3	Pink			5.2	96.8	65	65
4	Blue			5.6	96.4	75	75
5	White			6	96	75	75
6	Red			6.3	95.7	75	75
7	Orange			6.6	95.4	55	55
8	Yellow			6.9	95.1	45	not used
9	Pink			7.3	94.7	32	not used

Total

	<u>System</u>	<u>Repair</u>
	Lines 4-6	Lines 1-3, 7
System Type	Accepted Status System EZ-FLOW	Accepted Status System EZ-FLOW
Suggested Soil LTAR	0.400	0.400
Total Line Length	225	225
Square Footage	675	675
Proposed Trench Bottom	18-24"	18-24"
Distribution Method	Pump to D-Box	Pump to serial dist.

Avery Pond 3-Bedroom Septic Proposal Lot #112



System: Pump to D-Box
Lines: 4-6 (225')
0.4 LTAR
18-24" Trench Bottom
Accepted Status System
Repair: Pump to serial dist.
Lines: 1-3, 7 (225')
0.4 LTAR
18-24" Trench Bottom
Accepted Status System

Avery Pond Drive

GRAPHIC SCALE
1" = 50'



Adams Soil Consulting 919-414-6761 Job #708
--