

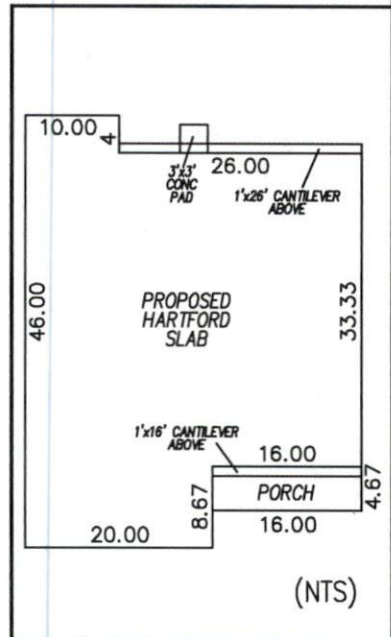
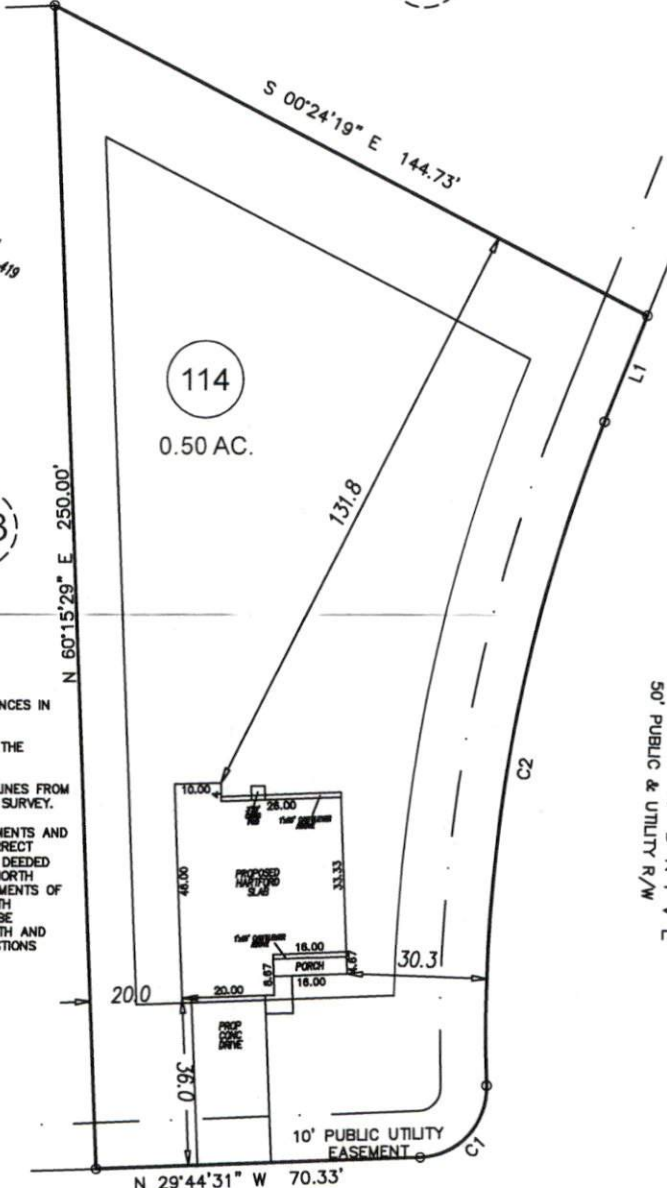
VICINITY MAP (NTS)

- LEGEND**
- PO=PORCH
 - P=PATIO
 - SW=SIDEWALK
 - DW=CONC DRIVEWAY
 - EB=ELECTRIC BOX
 - SCO=CLEANOUT
 - TP=TELEPHONE PEDESTAL
 - WM=WATER METER
 - AC=AIR CONDITIONING UNIT
 - BOC=BACK OF CURB
 - EOP=EDGE OF PAVEMENT
 - IRON PIPE FOUND
 - ⊙ IRON PIPE SET
 - NAIL SET

THIS SURVEY IS OF AN EXISTING PARCEL OR PARCELS OF LAND AND DOES NOT CREATE A NEW STREET OR CHANGE AN EXISTING STREET.

SHAWN T. RUMBERGER, PLS L-4909 DATE

THIS MAP IS ONLY INTENDED FOR THE PARTIES AND PURPOSES SHOWN. THIS MAP IS NOT FOR RECORDATION. NO TITLE REPORT PROVIDED.



HOUSE	1,488	SQ.FT.
DRIVE TO R/W	578	SQ.FT.
WALK	40	SQ.FT.
CONCRETE PAD	9	SQ.FT.
TOTAL	2,115	SQ.FT.
MAX. ALLOW	2,850	SQ.FT.

GENERAL NOTES:

1. ALL DISTANCES ARE HORIZONTAL GROUND DISTANCES IN U.S. SURVEY FEET UNLESS OTHERWISE NOTED.
2. AREAS SHOWN HEREON WERE COMPUTED USING THE COORDINATE METHOD.
3. LINES NOT SURVEYED ARE SHOWN AS DASHED LINES FROM INFORMATION REFERENCED ON THE FACE OF THIS SURVEY.
4. PROPERTY MAY BE SUBJECT TO ANY/ALL EASEMENTS AND RESTRICTIONS OF RECORD. THIS SURVEY IS A CORRECT REPRESENTATION OF THE LAND PLATTED AND/OR DEEDED AND HAS BEEN PREPARED IN CONFORMITY WITH NORTH CAROLINA STANDARDS, G.S. 47-30, AND REQUIREMENTS OF LAW, BUT WITHOUT A FULL TITLE REPORT. A NORTH CAROLINA LICENSED ATTORNEY-AT-LAW SHOULD BE CONSULTED REGARDING CORRECT OWNERSHIP, WIDTH AND LOCATION OF EASEMENTS, AND OTHER TITLE QUESTIONS REVEALED BY TITLE EXAMINATION.
5. DRIVEWAY IMPERVIOUS CALCULATED TO R/W

GRAPHIC SCALE



1 inch = 40 ft.

SETBACKS

FRONT	35'
SIDE	10'
REAR	20'
SIDE STREET	20'

IMPERVIOUS AREA

HOUSE	1,488	SQ.FT.
DRIVE TO R/W	578	SQ.FT.
WALK	40	SQ.FT.
CONCRETE PAD	9	SQ.FT.
TOTAL	2,115	SQ.FT.
MAX. ALLOW	2,850	SQ.FT.

AVERY POND DRIVE
50' PUBLIC & UTILITY R/W

**PRELIMINARY
PLOT PLAN**

LAHINCH DRIVE
50' PUBLIC & UTILITY R/W

PROJECT:	18-003 AVERY POND
DRAWN BY:	AMW
SCALE:	1"=40'
DATE:	3-15-2020

FOR
LGI HOMES
AVERY POND DRIVE
LOT 114 AVERY POND SUBDIVISION; PHASE IIIA
HECTOR'S CREEK TWP., HARNETT CO., NC
P.B. 2019, PG. 417-419

ECLS
GLOBAL, INC.
U.S. VETERAN-OWNED
19 N MCKINLEY ST
COATS, NC 27521
910.897.3257 ECLSGLOBALINC.COM
910.897.2329 (FAX) CO#C-4175