

Avery Pond
Lot #154

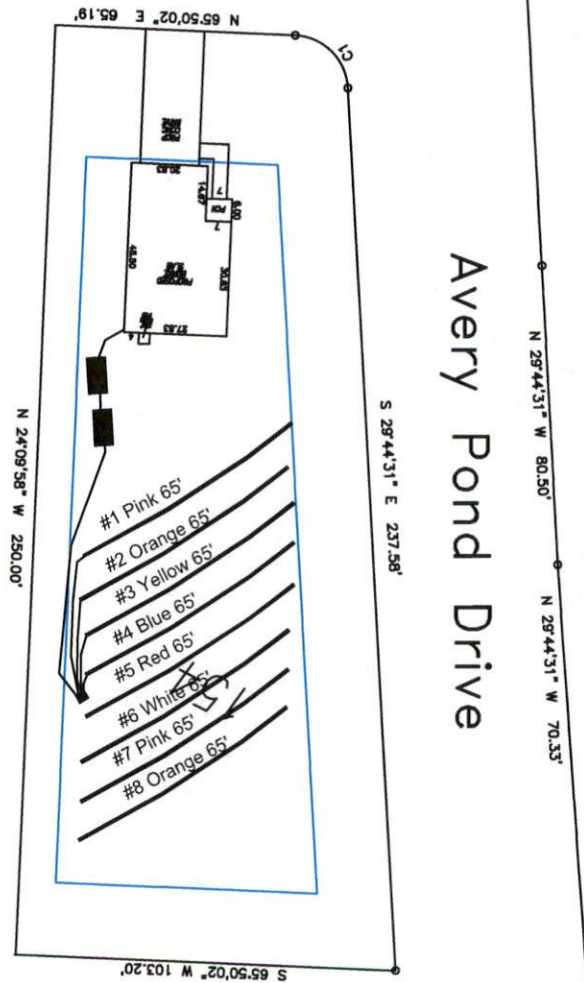
3-Bedroom Home (360 gal./day)

<u>LINE #</u>	<u>COLOR</u>	<u>BS</u>	<u>HI</u>	<u>FS</u>	<u>ELEVATION</u>	<u>LINE LENGTH</u>	<u>Design Length</u>
TBM		2.0		100.0		<u>in field</u>	<u>installation</u>
INST. 1			102.0				
1	Pink			5.3	96.7	70	65
2	Orange			4.9	97.1	70	65
3	Yellow			4.5	97.5	70	65
4	Blue			4.1	97.9	70	65
5	Red			3.9	98.1	70	65
6	White			3.8	98.2	70	65
7	Pink			3.7	98.3	70	65
8	Orange			3.6	98.4	70	65
Total							

	<u>System</u>	<u>Repair</u>
	Lines 1-4	Lines 5-8
System Type	Accepted Status System EZ-FLOW	Accepted Status System EZ-FLOW
Suggested Soil LTAR	0.350	0.350
Total Line Length	260	260
Square Footage	780	780
Proposed Trench Bottom	18-24"	18-24"
Distribution Method	Pump to D-Box	Pump to D-Box

Avery Pond 3-Bedroom Septic Proposal Lot #154

Doonbeg Drive



System: Pump to D-Box
 Lines: 1-4 (260')
 0.35 LTAR
 18-24" Trench Bottom
 Accepted Status System
 Repair: Pump to D-Box
 Lines: 5-8 (260')
 0.35 LTAR
 18-24" Trench Bottom
 Accepted Status System

GRAPHIC SCALE
 1" = 50'



Adams
 Soil Consulting
 919-414-6761
 Job #708