

Avery Pond
Lot #155

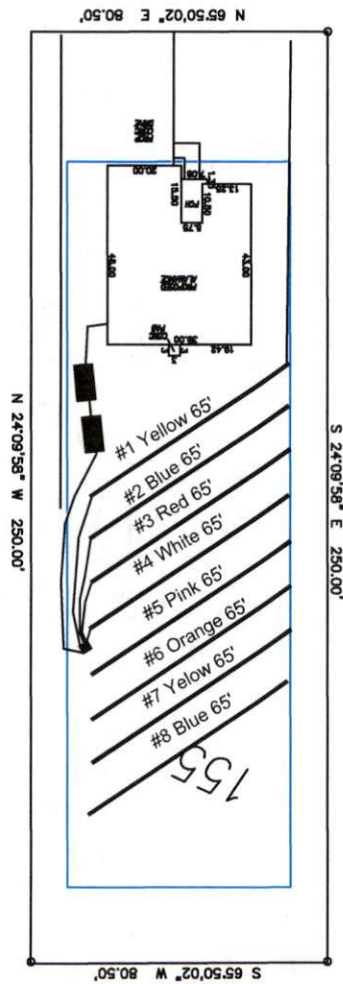
3-Bedroom Home (360 gal./day)

<u>LINE #</u>	<u>COLOR</u>	<u>BS</u>	<u>HI</u>	<u>FS</u>	<u>ELEVATION</u>	<u>LINE LENGTH</u>	<u>Design Length</u>
TBM		2.0		100.0		<u>in field</u>	<u>installation</u>
INST. 1			102.0				
1	Yellow			5.3	96.7	72	65
2	Blue			4.9	97.1	72	65
3	Red			4.5	97.5	71	65
4	White			4.1	97.9	70	65
5	Pink			3.9	98.1	70	65
6	Orange			3.8	98.2	70	65
7	Yellow			3.7	98.3	68	65
8	Blue			3.6	98.4	67	65
Total							

	<u>System</u>	<u>Repair</u>
	Lines 1-4	Lines 5-8
System Type	Accepted Status System EZ-FLOW	Accepted Status System EZ-FLOW
Suggested Soil LTAR	0.350	0.350
Total Line Length	260	260
Square Footage	780	780
Proposed Trench Bottom	18-24"	18-24"
Distribution Method	Pump to D-Box	Pump to D-Box

Avery Pond 3-Bedroom Septic Proposal Lot #155

Doonbeg Drive



System: Pump to D-Box
Lines: 1-4 (260')
0.35 LTAR
18-24" Trench Bottom
Accepted Status System
Repair: Pump to D-Box
Lines: 5-8 (260')
0.35 LTAR
18-24" Trench Bottom
Accepted Status System

GRAPHIC SCALE
1" = 50'



Adams Soil Consulting 919-414-6761 Job #708
--