

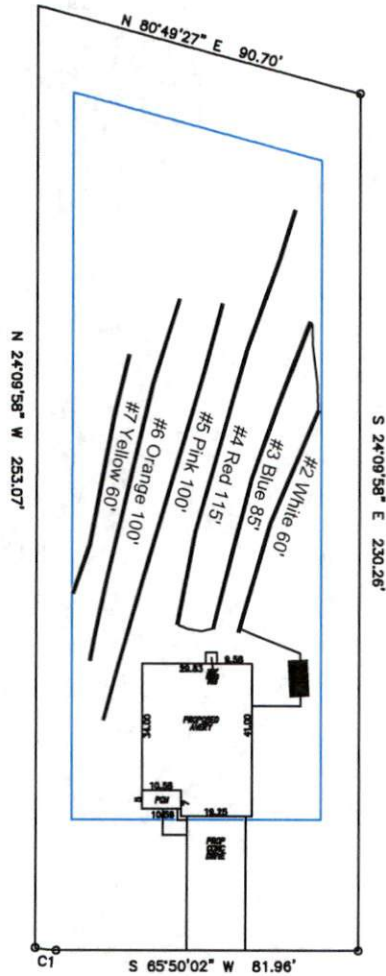
Avery Pond
Lot #163

3-Bedroom Home (360 gal./day)

<u>LINE #</u>	<u>COLOR</u>	<u>BS</u>	<u>HI</u>	<u>FS</u>	<u>ELEVATION</u>	<u>LINE LENGTH</u>	<u>Design Length</u>
TBM		2.0		100.0		<u>in field</u>	<u>installation</u>
INST. 1			102.0				
1	Yellow			3.0	99	40	not used
2	White			3.4	98.6	60	60
3	Blue			4	98	85	85
4	Red			4.8	97.2	115	115
5	Pink			5.5	96.5	135	100
6	Orange			6.2	95.8	100	100
7	Yellow			7	95	70	60
Total							

	<u>System</u>	<u>Repair</u>
	Lines 2-4	Lines 5-7
System Type	Accepted Status System	Accepted Status System
	EZ-FLOW	EZ-FLOW
Suggested Soil LTAR	0.350	0.350
Total Line Length	260	260
Square Footage	780	780
Proposed Trench Bottom	18-24"	18-24"
Distribution Method	Gravity to Serial Dist.	Serial Dist.

Avery Pond 3-Bedroom Septic Proposal Lot #163



Doonbeg Drive

System: Gravity to Serial Dist.
 Lines: 2-4 (260')
 0.35 LTAR
 18-24" Trench Bottom
 Accepted Status System
 Repair: Gravity to Serial Dist.
 Lines: 5-7 (260')
 0.35 LTAR
 18-24" Trench Bottom
 Accepted Status System

GRAPHIC SCALE
 1" = 50'



Adams
 Soil Consulting
 919-414-6761
 Job #708