

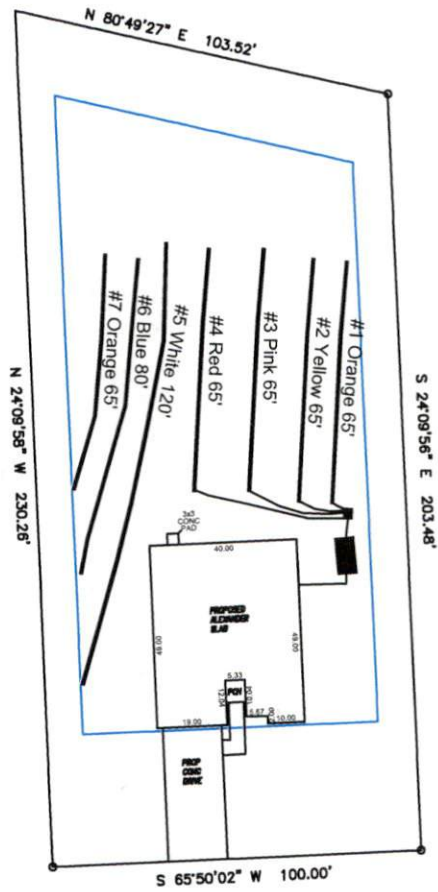
**Avery Pond**  
**Lot #164**

3-Bedroom Home (360 gal./day)

| <u>LINE #</u> | <u>COLOR</u> | <u>BS</u> | <u>HI</u> | <u>FS</u> | <u>ELEVATION</u> | <u>LINE LENGTH</u> | <u>Design Length</u> |
|---------------|--------------|-----------|-----------|-----------|------------------|--------------------|----------------------|
| TBM           |              | 2.0       |           | 100.0     |                  | <u>in field</u>    | <u>installation</u>  |
| INST. 1       |              |           | 102.0     |           |                  |                    |                      |
| 1             | Orange       |           |           | 2.4       | 99.6             | 110                | 65                   |
| 2             | Yellow       |           |           | 2.9       | 99.1             | 65                 | 65                   |
| 3             | Pink         |           |           | 3.9       | 98.1             | 65                 | 65                   |
| 4             | Red          |           |           | 4.9       | 97.1             | 65                 | 65                   |
| 5             | White        |           |           | 5.9       | 96.1             | 120                | 120                  |
| 6             | Blue         |           |           | 6.9       | 95.1             | 80                 | 80                   |
| 7             | Orange       |           |           | 7.9       | 94.1             | 65                 | 60                   |
| Total         |              |           |           |           |                  |                    |                      |

|                               | <u>System</u>                     | <u>Repair</u>                     |
|-------------------------------|-----------------------------------|-----------------------------------|
|                               | Lines 1-4                         | Lines 5-7                         |
| <b>System Type</b>            | Accepted Status System<br>EZ-FLOW | Accepted Status System<br>EZ-FLOW |
| Suggested Soil LTAR           | 0.350                             | 0.350                             |
| <b>Total Line Length</b>      | 260                               | 260                               |
| <b>Square Footage</b>         | 780                               | 780                               |
| <b>Proposed Trench Bottom</b> | 18-24"                            | 18-24"                            |
| <b>Distribution Method</b>    | Gravity to D-Box                  | Serial Dist.                      |

# Avery Pond 3-Bedroom Septic Proposal Lot #164



System: Pump to D-Box  
 Lines: 1-4 (260')  
 0.35 LTAR  
 18-24" Trench Bottom  
 Accepted Status System  
 Repair: Pump to Serial Dist.  
 Lines: 5-7 (265')  
 0.35 LTAR  
 18-24" Trench Bottom  
 Accepted Status System

Doonbeg Drive

---

GRAPHIC SCALE  
 1" = 50'



Adams  
 Soil Consulting  
 919-414-6761  
 Job #708