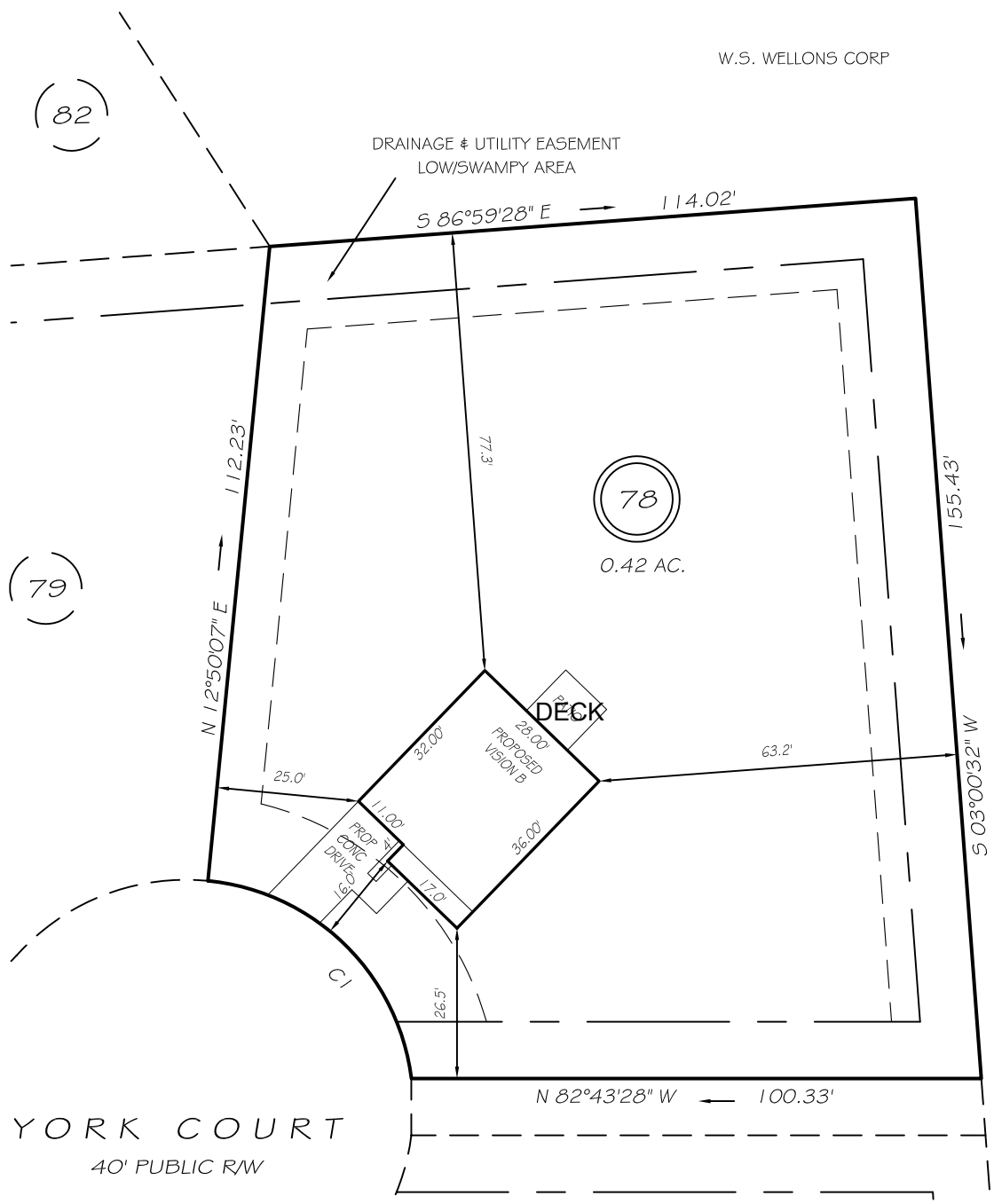


I, MICHAEL P. GRIFFIN, certify that under my direction and supervision this map was drawn from an actual field survey; that the error of closure of the survey as calculated by coordinates is 1: 10,000+; that the area shown hereon was calculated by coordinates.

Witness my hand and seal this day of MONTH 2020.

PC F SLIDE 548C  
 HARNETT CO. REGISTRY



CI R=40.00' L=53.93' N38°32'06"W 49.94'

EASEMENTS ARE HEREBY RESERVED BY THE DEVELOPER ON, OVER, UNDER, ABOVE AND THROUGH A STRIP OF LAND TEN FEET IN WIDTH ALONG EACH SIDE LOT LINE AND FIFTEEN FEET IN WIDTH ALONG EACH REAR LOT LINE AND FRONT LOT LINE FOR DRAINAGE, WATER AND SEWAGE INSTALLATION AND MAINTENANCE AND FOR OTHER UTILITY PURPOSES.

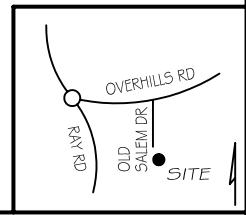
PER COVENANTS  
SETBACKS

FRONT	15'
REAR	15'
SIDE	8'

**P R E L I M I N A R Y**  
NOT FOR RECORDATION,  
SALES OR CONVEYANCE

LEGEND

EIP	EXISTING IRON PIPE	FES	FLARED END SECTION
IPS	IRON PIPE SET	WM	WATER METER
RAW	RIGHT OF WAY	CO	CLEAN OUT
N/F	NOW OR FORMERLY	FH	FIRE HYDRANT
EIS	EXISTING IRON STAKE	CB	CATCH BASIN



GRIFFIN LAND SURVEYING, INC.

P. O. BOX 148  
FUQUAY-VARINA, NC 27526  
(919) - 567-1963

PLOT PLAN

FOR

**H & H HOMES**

COUNTRY SQUIRE ESTATES

LOT 78

YORK COURT

NORTH CAROLINA

HARNETT CO. ANDERSON CREEK TWSP

DRAWN BY NMF

DATE 5/19/20

CHECKED BY MPG

SCALE 1" = 30'