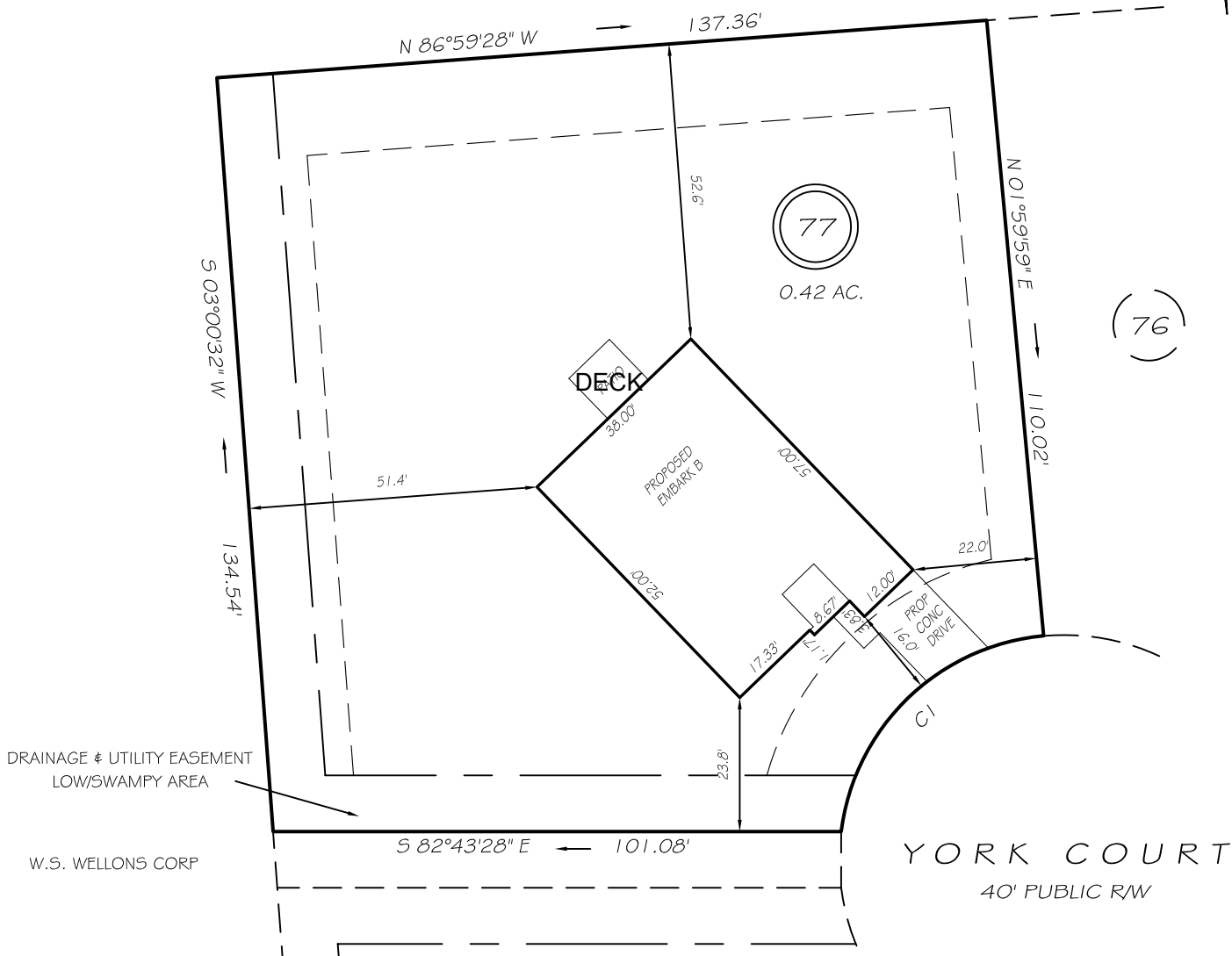


I, MICHAEL P. GRIFFIN, certify that under my direction and supervision this map was drawn from an actual field survey; that the error of closure of the survey as calculated by coordinates is 1: 10,000+; that the area shown hereon was calculated by coordinates.

Witness my hand and seal this day of MONTH 2020.

PC F SLIDE 548C
HARNETT CO. REGISTRY

TRINITY FULL GOSPEL
NON DENOMIN CH
PIN 0514-15-9194.000



DRAINAGE & UTILITY EASEMENT
LOW/SWAMPY AREA

W.S. WELLONS CORP

YORK COURT
40' PUBLIC R/W

$CI R=40.00' L=54.14' N53^{\circ}13'41'' E 50.10'$

EASEMENTS ARE HEREBY RESERVED BY THE DEVELOPER ON, OVER, UNDER, ABOVE AND THROUGH A STRIP OF LAND TEN FEET IN WIDTH ALONG EACH SIDE LOT LINE AND FIFTEEN FEET IN WIDTH ALONG EACH REAR LOT LINE AND FRONT LOT LINE FOR DRAINAGE, WATER AND SEWAGE INSTALLATION AND MAINTENANCE AND FOR OTHER UTILITY PURPOSES.

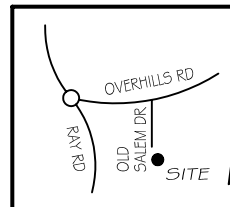
PER COVENANTS
SETBACKS

FRONT 15'
REAR 15'
SIDE 8'

P R E L I M I N A R Y
NOT FOR RECORDATION,
SALES OR CONVEYANCE

LEGEND

EIP	EXISTING IRON PIPE	FES	FLARED END SECTION
IPS	IRON PIPE SET	WM	WATER METER
RAW	RIGHT OF WAY	CO	CLEAN OUT
N/F	NOW OR FORMERLY	FH	FIRE HYDRANT
EIS	EXISTING IRON STAKE	CB	CATCH BASIN



GLS GRIFFIN LAND SURVEYING, INC.
P. O. BOX 148
FUQUAY-VARINA, NC 27526
(919) - 567 - 1963

PLOT PLAN
FOR
H & H HOMES
COUNTRY SQUIRE ESTATES
LOT 77
YORK COURT
NORTH CAROLINA
HARNETT CO. ANDERSON CREEK TWSP

DRAWN BY NMF	DATE 5/19/20
CHECKED BY MPG	SCALE 1" = 30'