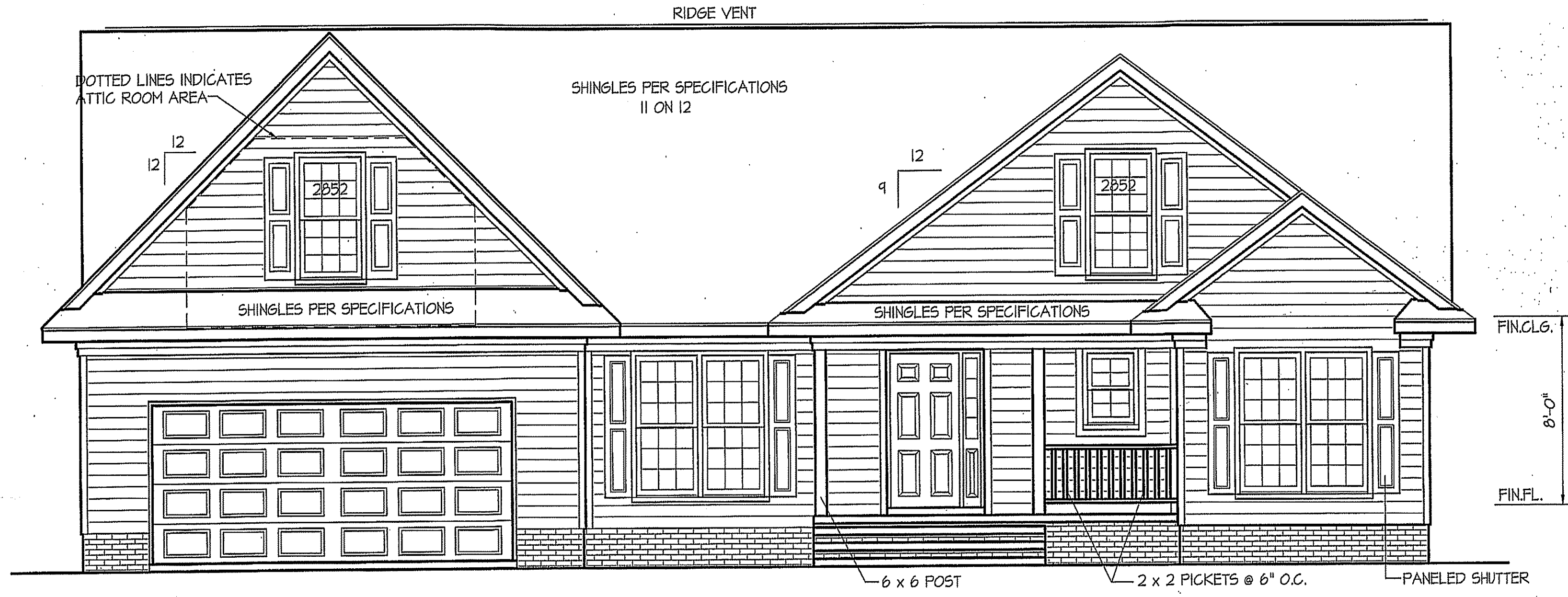


THIS PLAN IS DESIGNED TO MEET THE REQUIREMENTS OF THE NORTH CAROLINA RESIDENTIAL CODE 2018 EDITION

DATE:
FEB. 26, 2019



FRONT ELEVATION
SCALE: 1/4" = 1'-0"

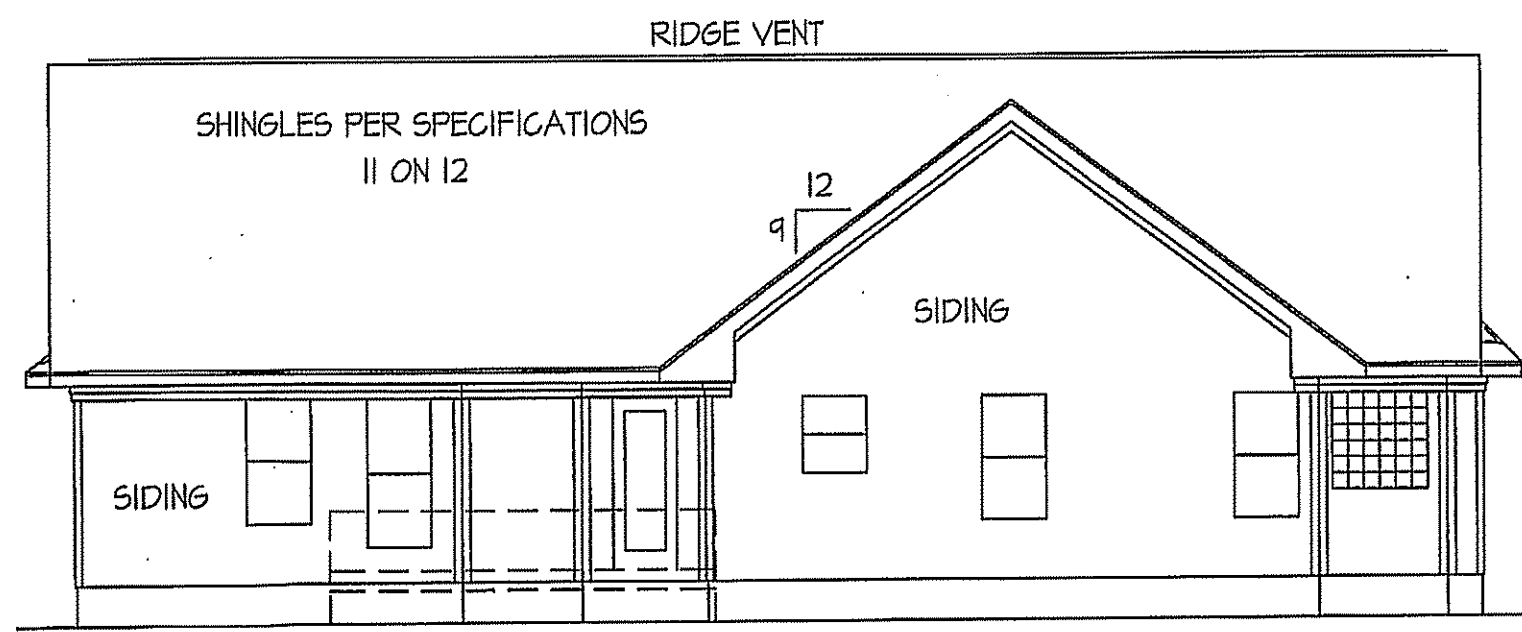
WIND ZONES (PER TABLE R301.2(4))

COUNTY	MPH
HARNETT	120
JOHNSTON	120
SAMPSON	130
WAKE	115

INSULATION and FENESTRATION REQUIREMENTS

CLIMATE ZONE	ZONE-3	ZONE-4
FENESTRATION U-FACTOR	0.35	0.35
GLAZED FENESTRATION SHGC	0.30	0.30
MINIMUM CEILING R-VALUE	R-30	R-30
MINIMUM WALL R-VALUE	R-15, 13+2.5	R-15, 13+2.5
MINIMUM FLOOR R-VALUE	R-19	R-19
MIN. CRAWL SPACE WALL R-VALUE	5/13	10/15
MIN. SLAB R-VALUE	0	R-10

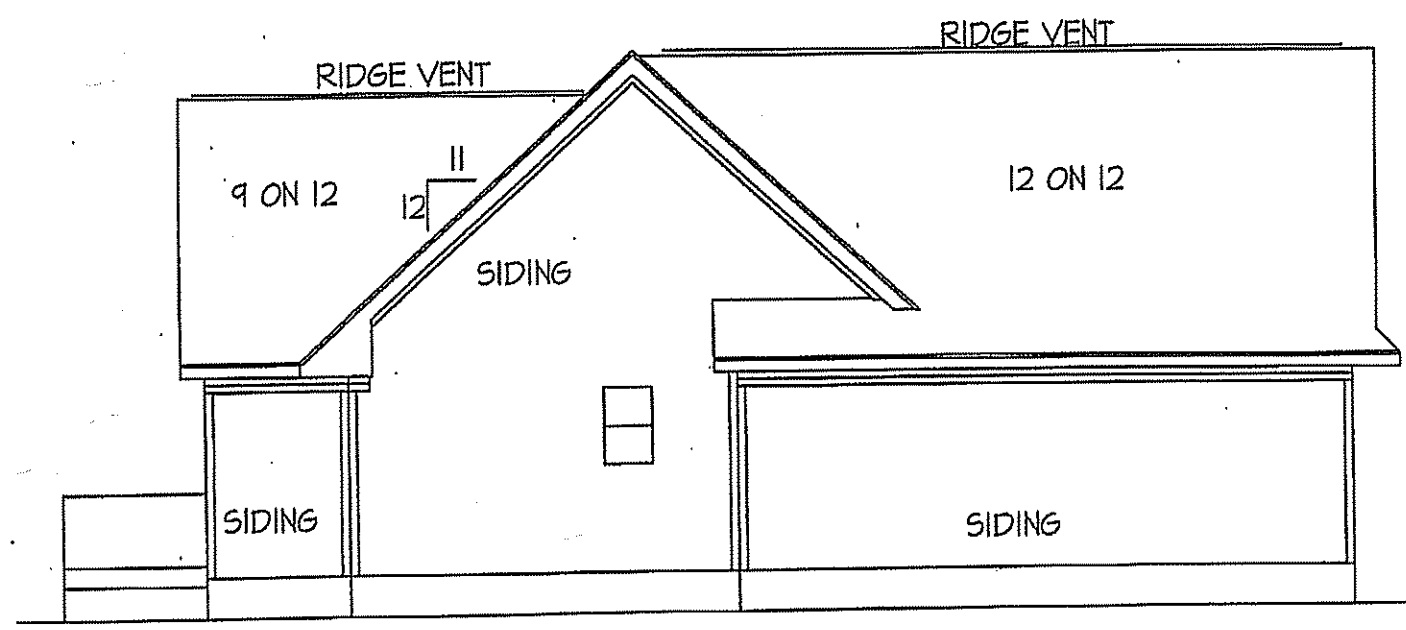
PROVIDE STEPS AS REQUIRED
GRADE MAY VARY - BUILDER TO VERIFY



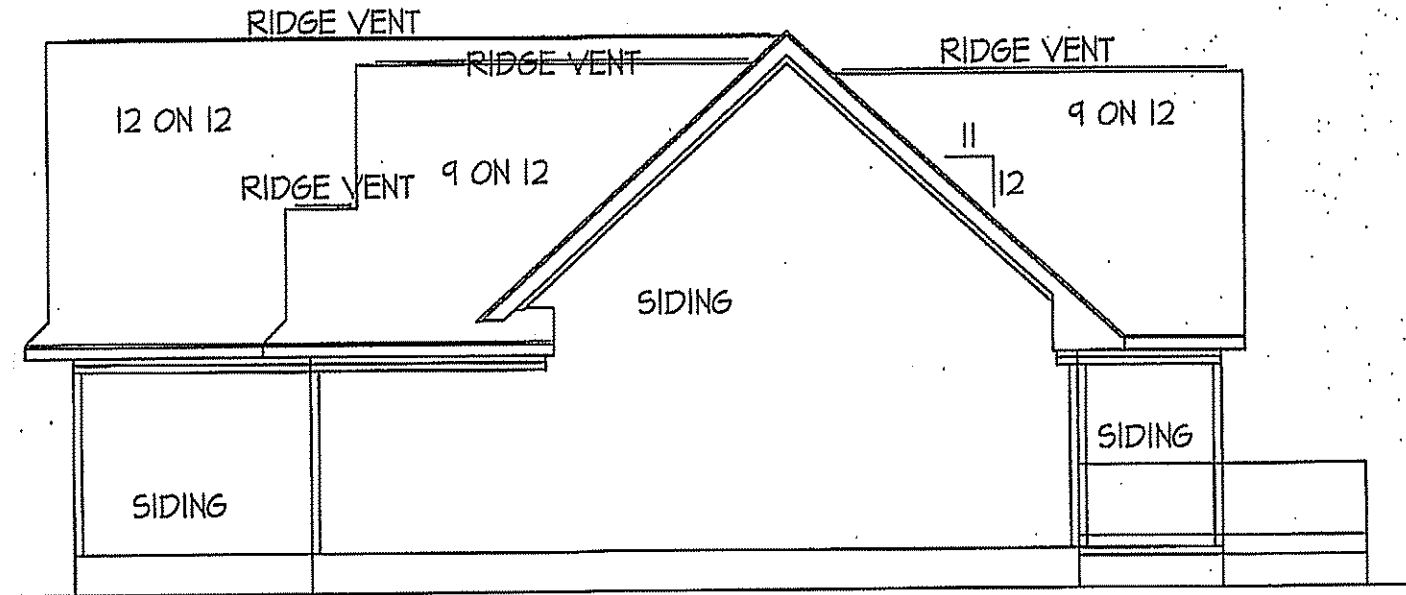
REAR ELEVATION
SCALE: 1/8" = 1'-0"

PROVIDE STEPS AS REQ'D.
BUILDER TO VERIFY GRADE
FN'D. VENTS NOT SHOWN (SEE SHEET #3)

ROOF VENTILATION REQ'MTS.
2099 ATTIC SQ. FT. / 300 = 7.0
PROVIDED ON PLAN
120 L.F. RIDGE VENT = 22.5
163 L.F. SOFFIT VENT = 8.9
TOTAL = 31.40 S.F. FREE NET AREA

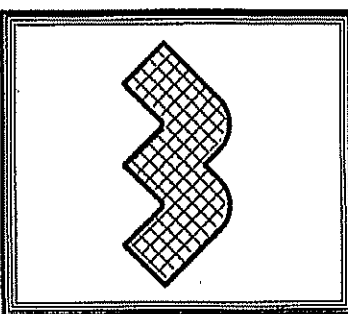


LEFT ELEVATION
SCALE: 1/8" = 1'-0"



RIGHT ELEVATION
SCALE: 1/8" = 1'-0"

WELLONS HOMES
P.O. BOX 730
DUNN, N.C. - 28335
O: (910) 892-3123 FAX: (910) 892-5032
© 2002, WELLONS HOMES



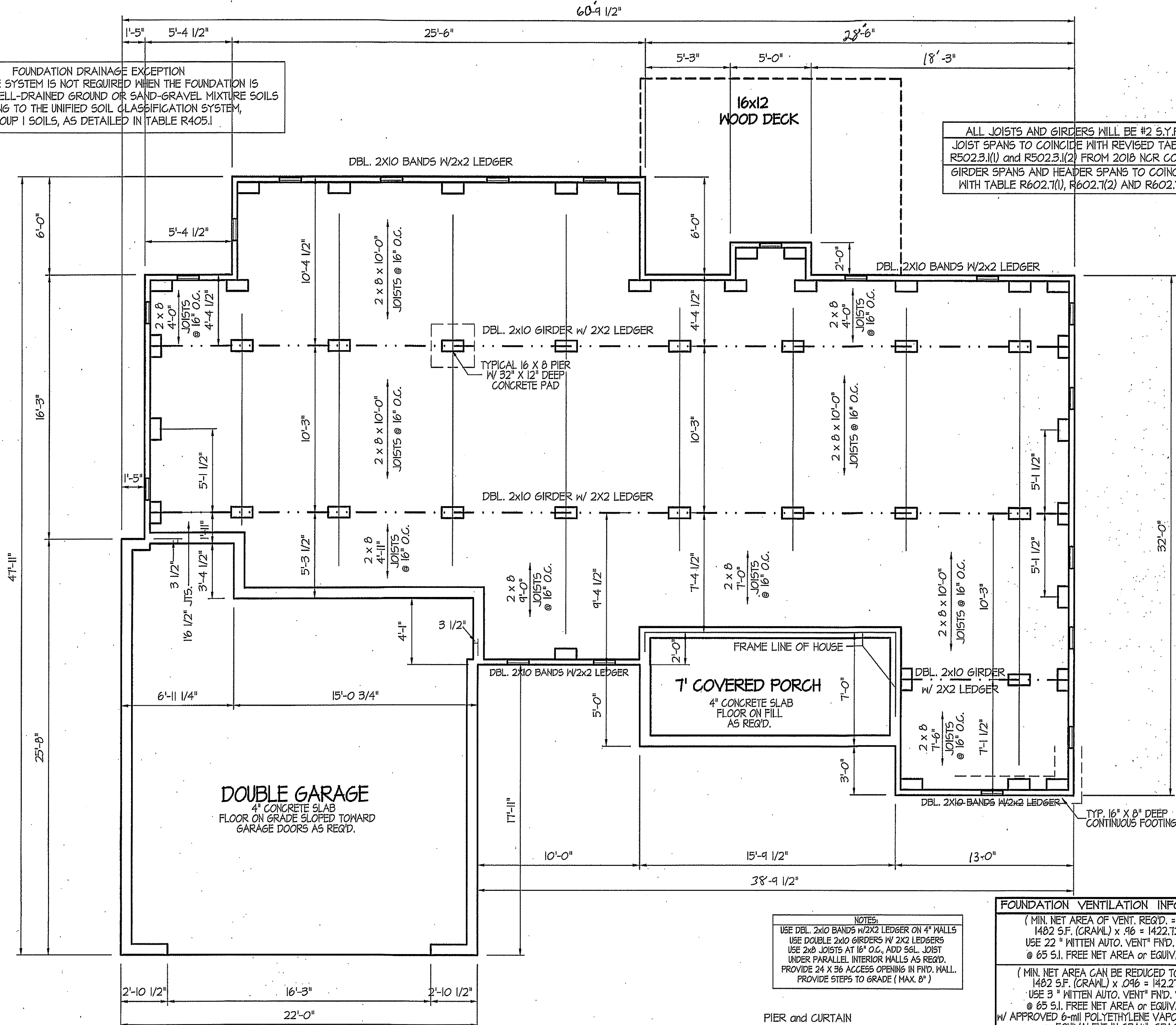
EXCLUSIVE PLAN FOR
WELLONS HOMES
WATERFORD COLLECTION SERIES
HUNTINGTON - A

SHEET NO.
1

COMPUTER FILE - WELLONS 2014 PLANS

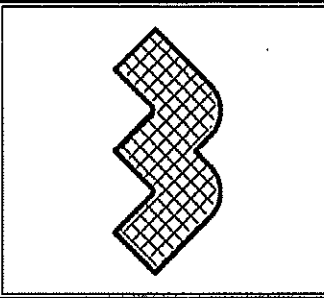
FOUNDATION DRAINAGE EXCEPTION
 A DRAINAGE SYSTEM IS NOT REQUIRED WHEN THE FOUNDATION IS INSTALLED ON WELL-DRAINED GROUND OR SAND-GRAVEL MIXTURE SOILS ACCORDING TO THE UNIFIED SOIL CLASSIFICATION SYSTEM, GROUP I SOILS, AS DETAILED IN TABLE R405.1

ALL JOISTS AND GIRDERS WILL BE #2 S.Y.P.
 JOIST SPANS TO COINCIDE WITH REVISED TABLES R502.3.1(1) AND R502.3.1(2) FROM 2018 NCR CODES
 GIRDER SPANS AND HEADER SPANS TO COINCIDE WITH TABLE R602.7(1), R602.7(2) AND R602.7(3).



DATE:
 FEB. 26, 2019

WELLONS HOMES
 P.O. BOX 730
 DUNN, N.C. - 28335
 O: (910) 892-3123 FAX: (910) 892-5032
 © 2002, WELLONS HOMES



EXCLUSIVE PLAN FOR
WELLONS HOMES
 WATERFORD COLLECTION SERIES
HUNTINGTON - A

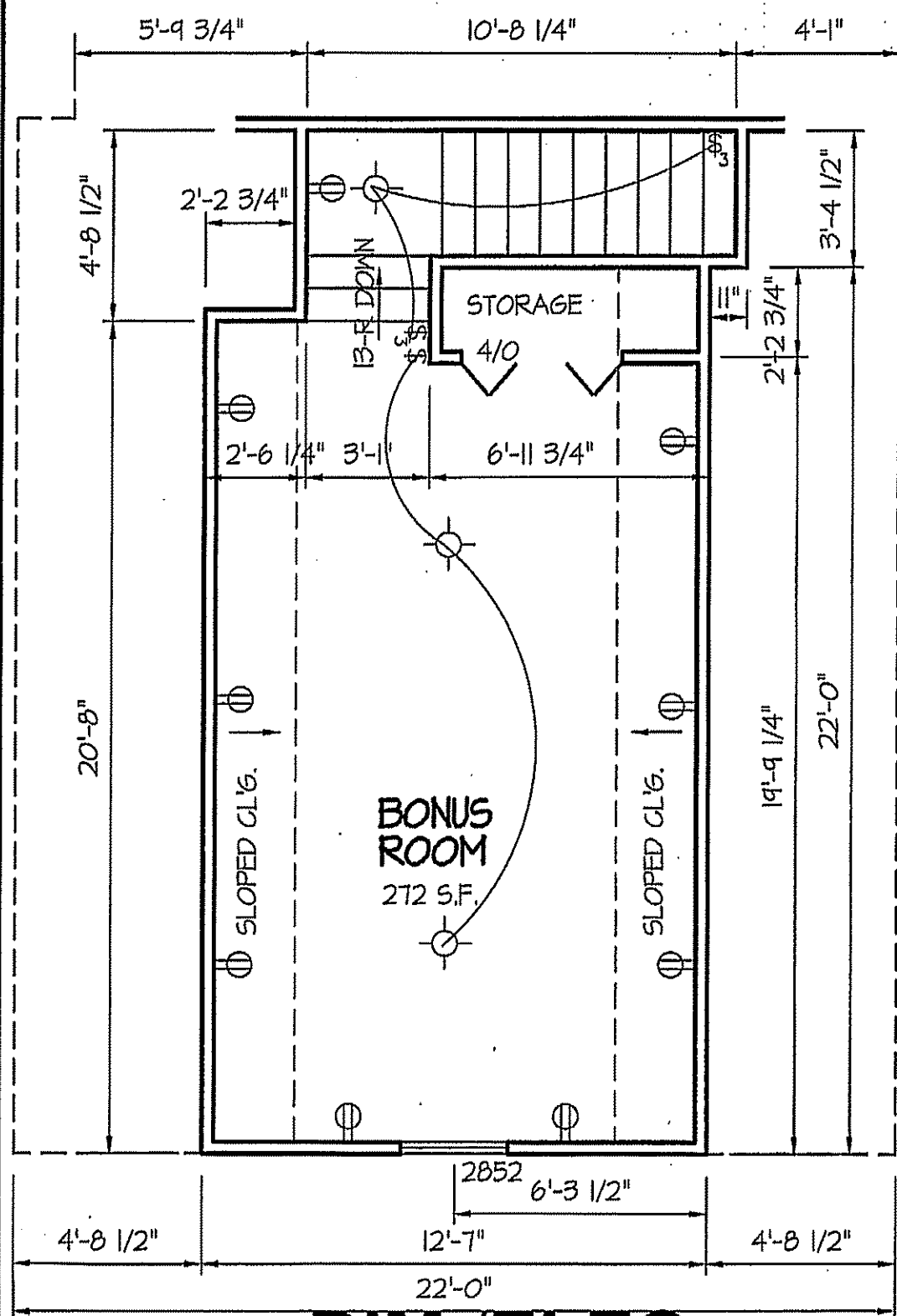
PLAN:
 SHEET NO.
3

NOTES:
 USE DBL. 2x10 BANDS W/2X2 LEDGER ON 4" WALLS
 USE DOUBLE 2x10 GIRDERS W/ 2X2 LEDGERS
 USE 2x8 JOISTS AT 16" O.C., ADD 5/8" JOIST UNDER PARALLEL INTERIOR WALLS AS REQ'D.
 PROVIDE 24 X 36 ACCESS OPENING IN FIN. HALL.
 PROVIDE STEPS TO GRADE (MAX. 8")

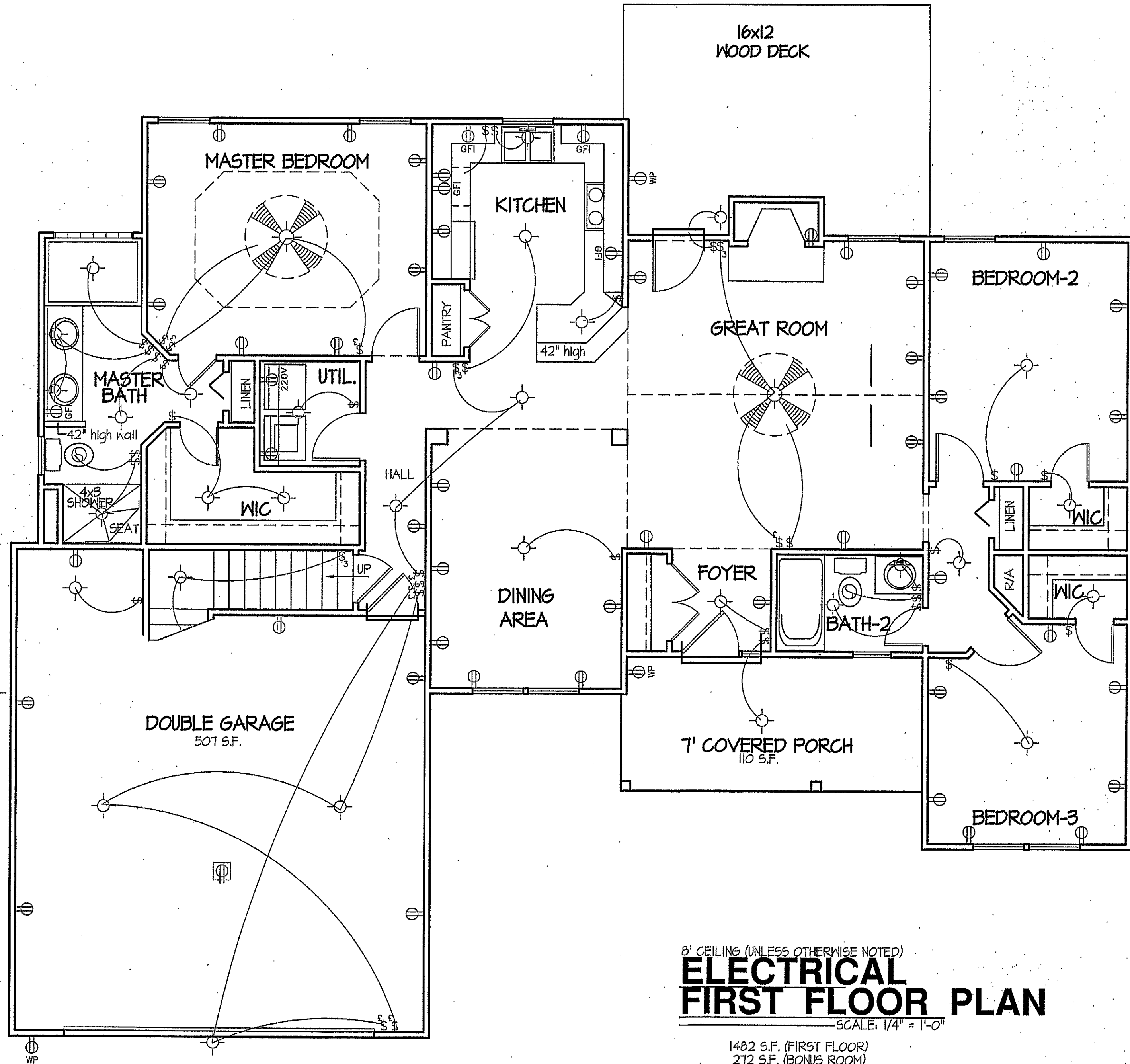
FOUNDATION VENTILATION INFORMATION
 (MIN. NET AREA OF VENT. REQ'D. = 1/150)
 1482 S.F. (CRAWL) x .96 = 1422.72 S.I.
 USE 22" WITTEN AUTO. VENT" FND. VENTS @ 65 S.I. FREE NET AREA or EQUIVALENT.
 (MIN. NET AREA CAN BE REDUCED TO 1/1500)
 1482 S.F. (CRAWL) x .096 = 142.272 S.I.
 USE 3" WITTEN AUTO. VENT" FND. VENTS @ 65 S.I. FREE NET AREA or EQUIVALENT.
 w/ APPROVED 6-mil POLYETHYLENE VAPOR RETARDER or EQUIVALENT IN CRAWL SPACE.
 REQUIRED VENTS ARE TO BE PLACED SO AS TO PROVIDE CROSS-VENTILATION OF THE CRAWL SPACE.

PIER and CURTAIN
FOUNDATION PLAN
 SCALE: 1/4" = 1'-0"

COMPUTER FILE - WELLONS 2019 PLANS



**DIM./ELEC.
BONUS ROOM**
SCALE: 1/4" = 1'-0"

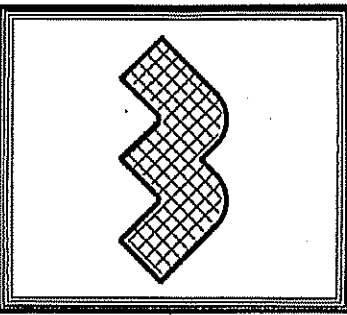


8' CEILING (UNLESS OTHERWISE NOTED)
**ELECTRICAL
FIRST FLOOR PLAN**
SCALE: 1/4" = 1'-0"

1482 S.F. (FIRST FLOOR)
272 S.F. (BONUS ROOM)
1754 S.F. (TOTAL)

DATE:
FEB. 26, 2019

WELLONS HOMES
P.O. BOX 730
DUNN, N.C. - 28335
O: (910) 892-3123 FAX: (910) 892-5032
© 2002, WELLONS HOMES

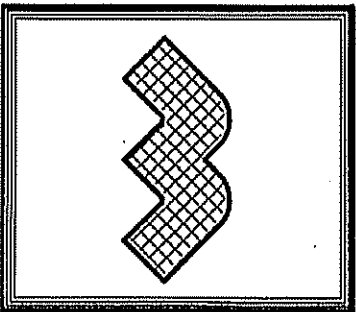


EXCLUSIVE PLAN FOR
WELLONS HOMES
WATERFORD COLLECTION SERIES
HUNTINGTON - A
PLAN:

SHEET NO.
4

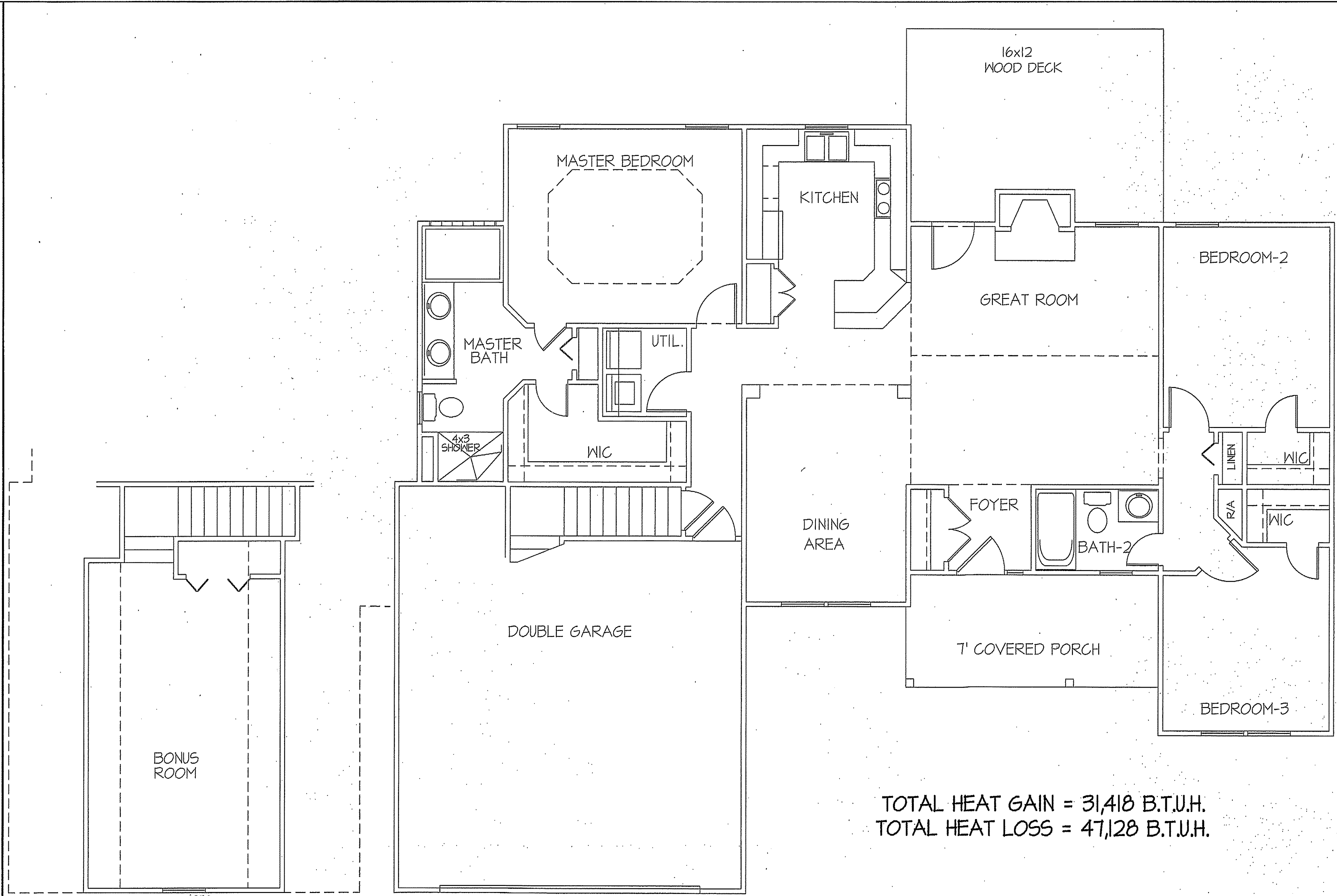
DATE:
FEB. 26, 2019

WELLONS HOMES
P.O. BOX 730
DUNN, N.C. - 28335
O: (910) 892-3123 FAX: (910) 892-5032
© 2002, WELLONS HOMES



EXCLUSIVE PLAN FOR
WELLONS HOMES
WATERFORD COLLECTION SERIES
HUNTINGTON - A

PLAN:
SHEET NO.
5



2052
TOTAL HEAT GAIN = 5,740 B.T.U.H.
TOTAL HEAT LOSS = 8,622 B.T.U.H.

**HVAC
BONUS ROOM**
SCALE: 1/4" = 1'-0"

NOTE:
HVAC CONTRACTOR TO PROVIDE OWNERS AND BUILDERS
UNIT INFORMATION, BTUH REQUIREMENTS, AND
DUCT LAYOUTS BEFORE CONSTRUCTION BEGINS.

TOTAL HEAT GAIN = 31,418 B.T.U.H.
TOTAL HEAT LOSS = 47,128 B.T.U.H.

8' CEILING (UNLESS OTHERWISE NOTED)
**HVAC
FIRST FLOOR PLAN**
SCALE: 1/4" = 1'-0"
1482 S.F. (FIRST FLOOR)
272 S.F. (BONUS ROOM)
1754 S.F. (TOTAL)

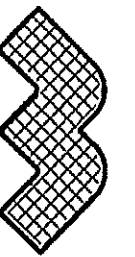
COMPUTER FILE - WELLONS 2019 PLANS

DATE:

FEB. 26, 2019

WELLONS HOMES

P.O. BOX 730
DUNN, N.C. - 28335
O: (910) 892-3123 FAX: (910) 892-5032
© 2002, WELLONS HOMES

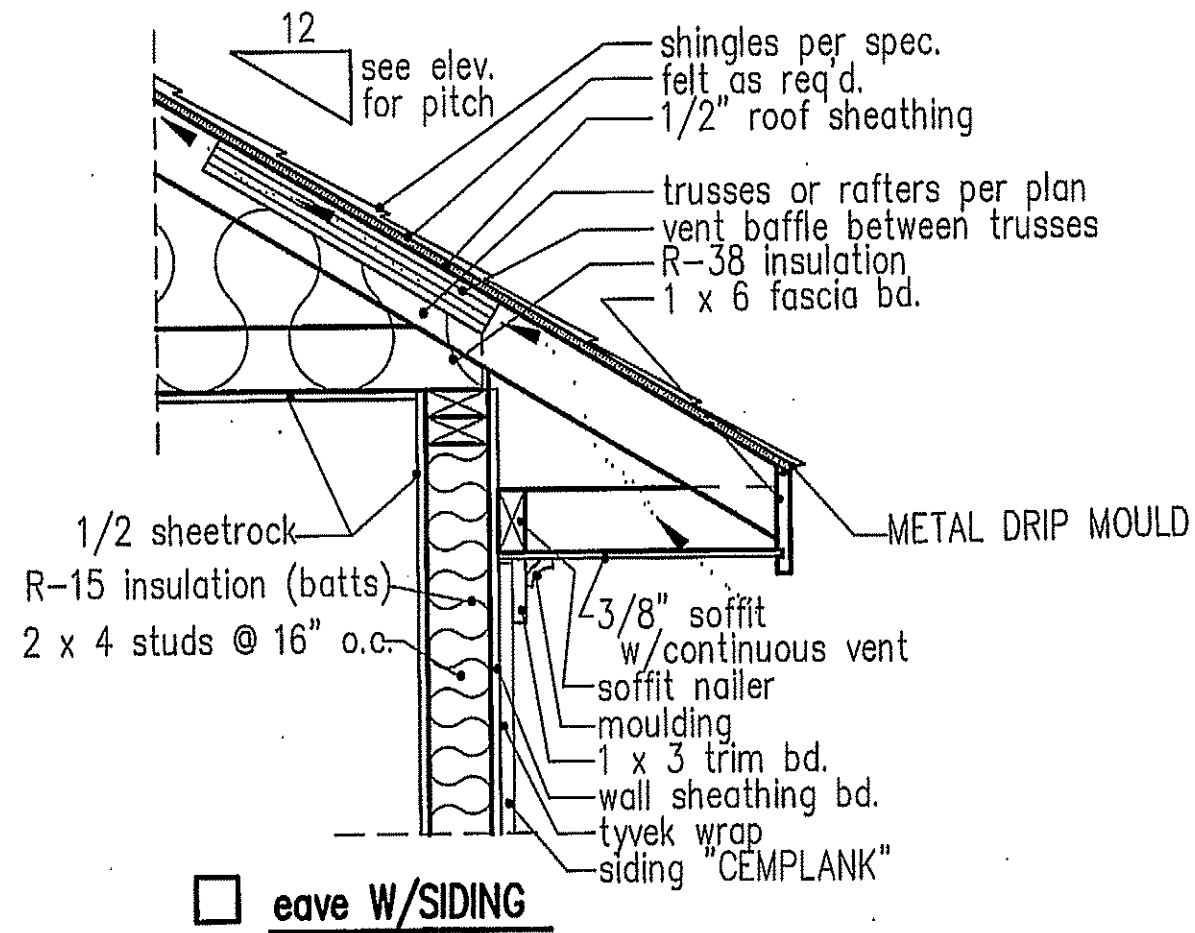


EXCLUSIVE PLAN FOR
WELLONS HOMES
WATERFORD COLLECTION SERIES
HUNTINGTON - A

PLAN:

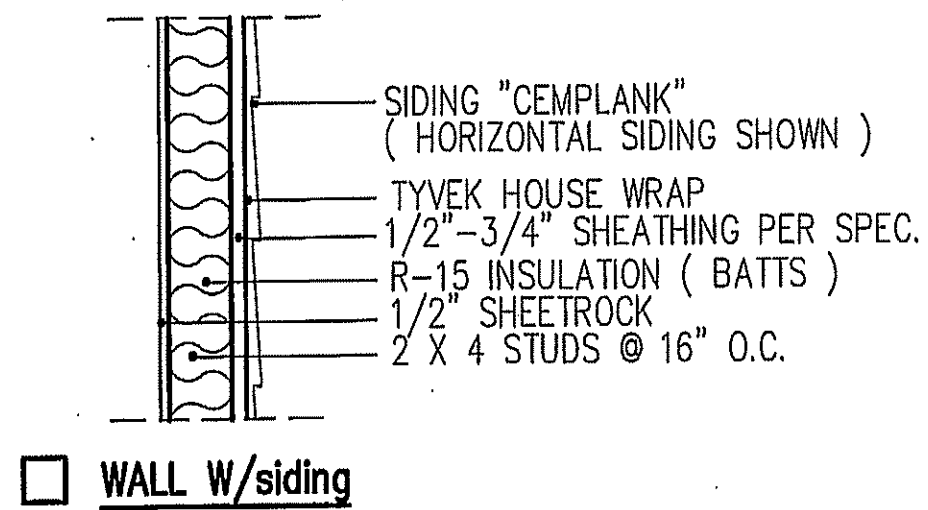
SHEET NO.

6

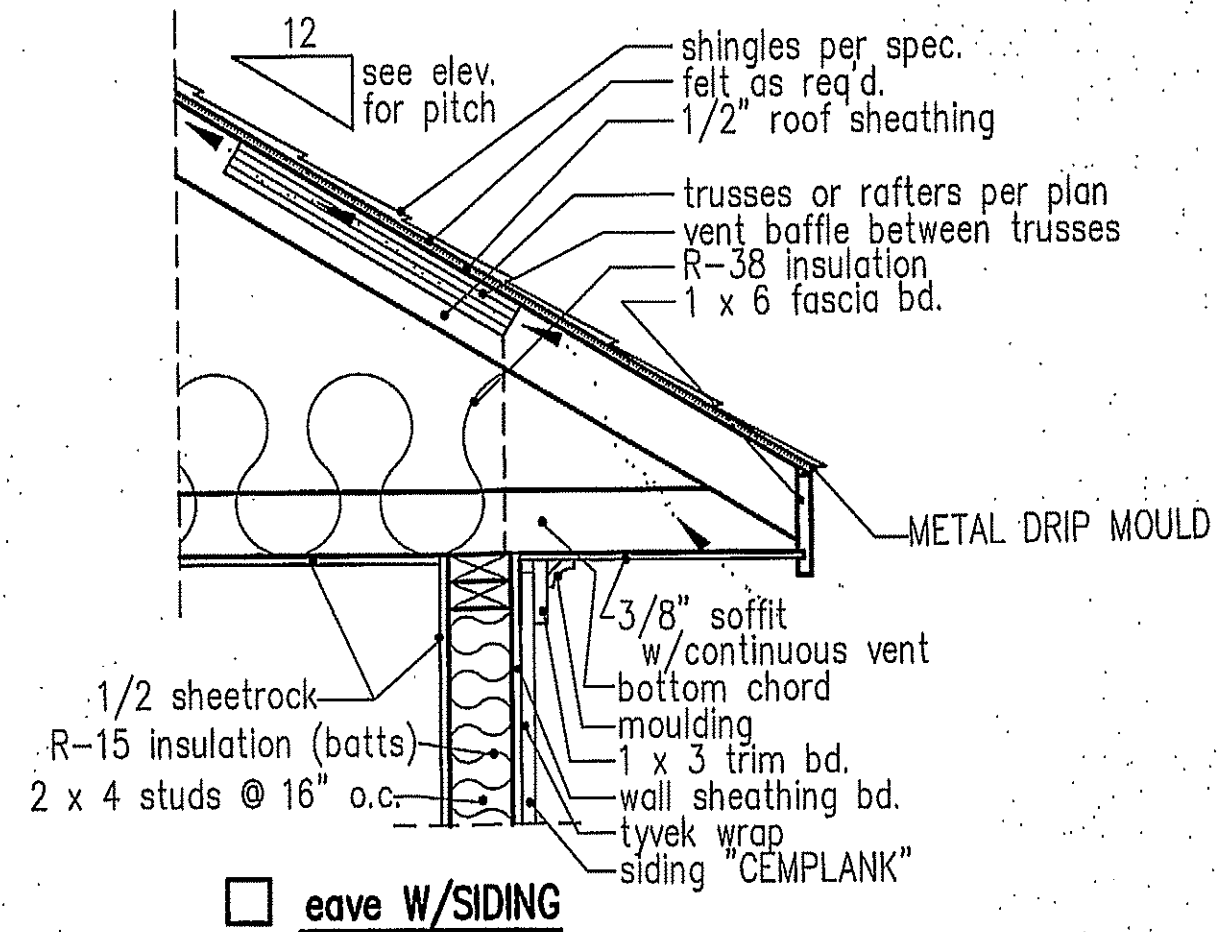
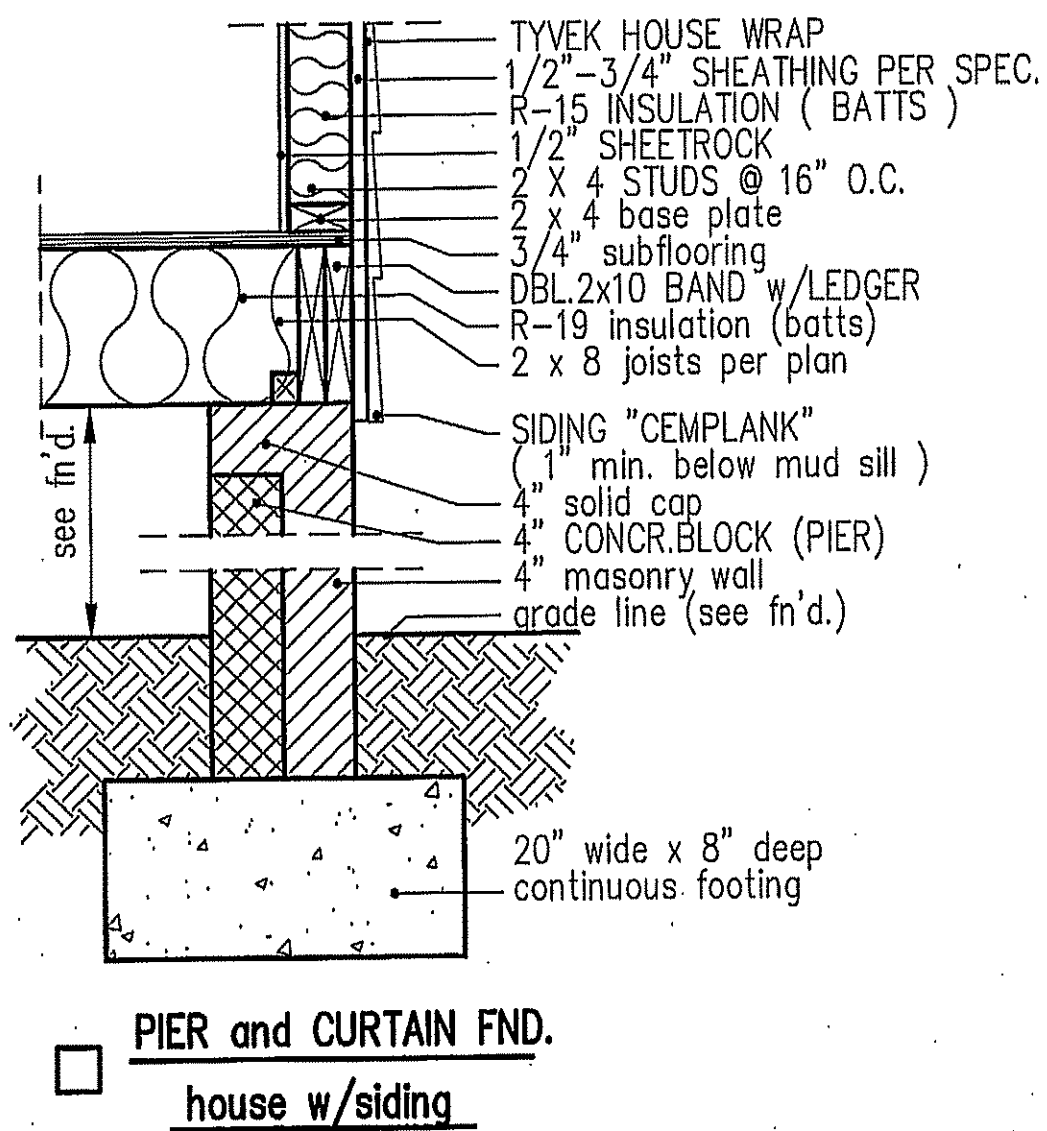


NOTE: OVERHANG DISTANCE NOTED ON ELEVATION SHEET IS ALWAYS MEASURED FROM FRAME LINE

standard eave details

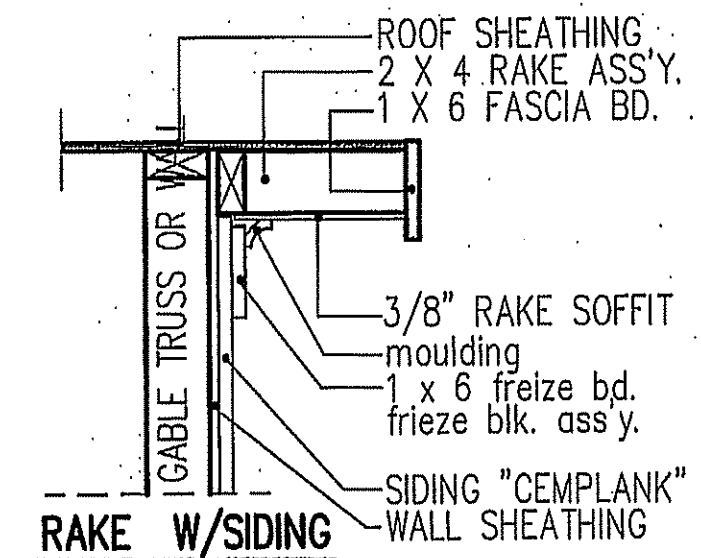
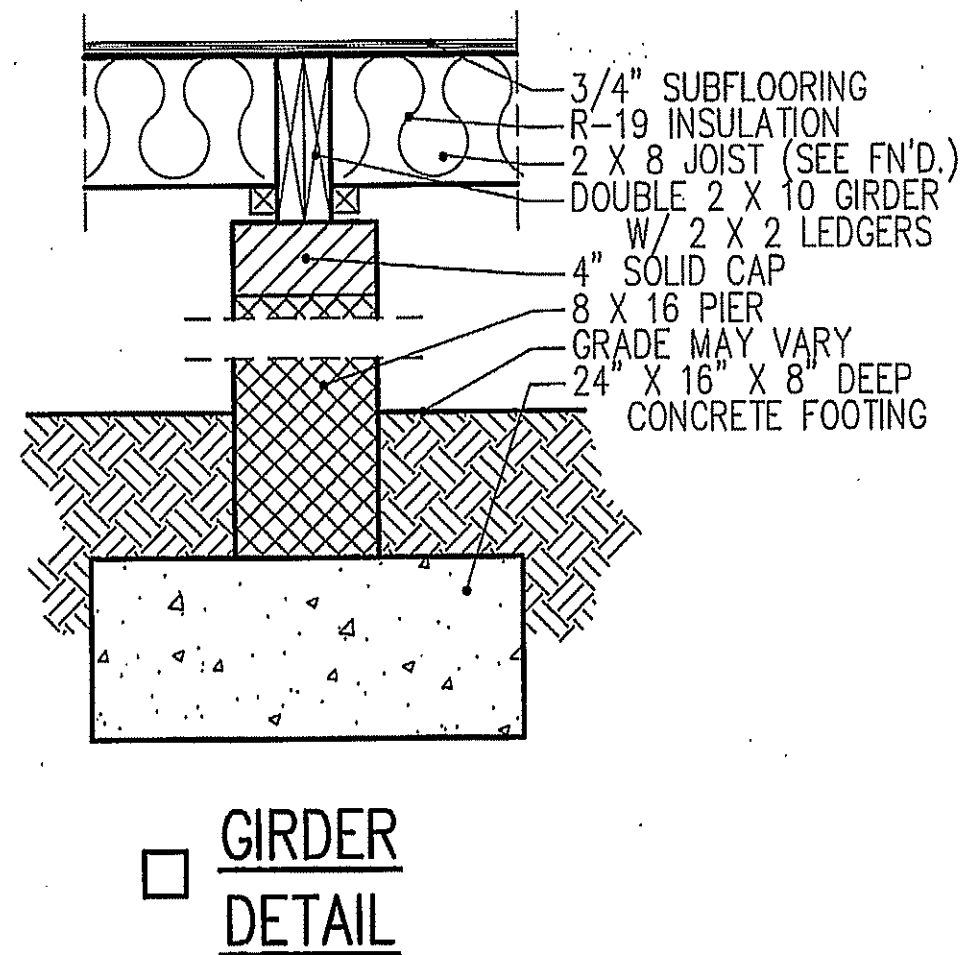


intermediate wall details



NOTE: OVERHANG DISTANCE NOTED ON ELEVATION SHEET IS ALWAYS MEASURED FROM FRAME LINE

cantilevered eave details



NOTE: OVERHANG DISTANCE NOTED ON ELEVATION SHEET IS ALWAYS MEASURED FROM FRAME LINE