

NOTICE TO CONTRACTOR
All construction must comply with current NC Building Codes and is subject to field inspection and verification.

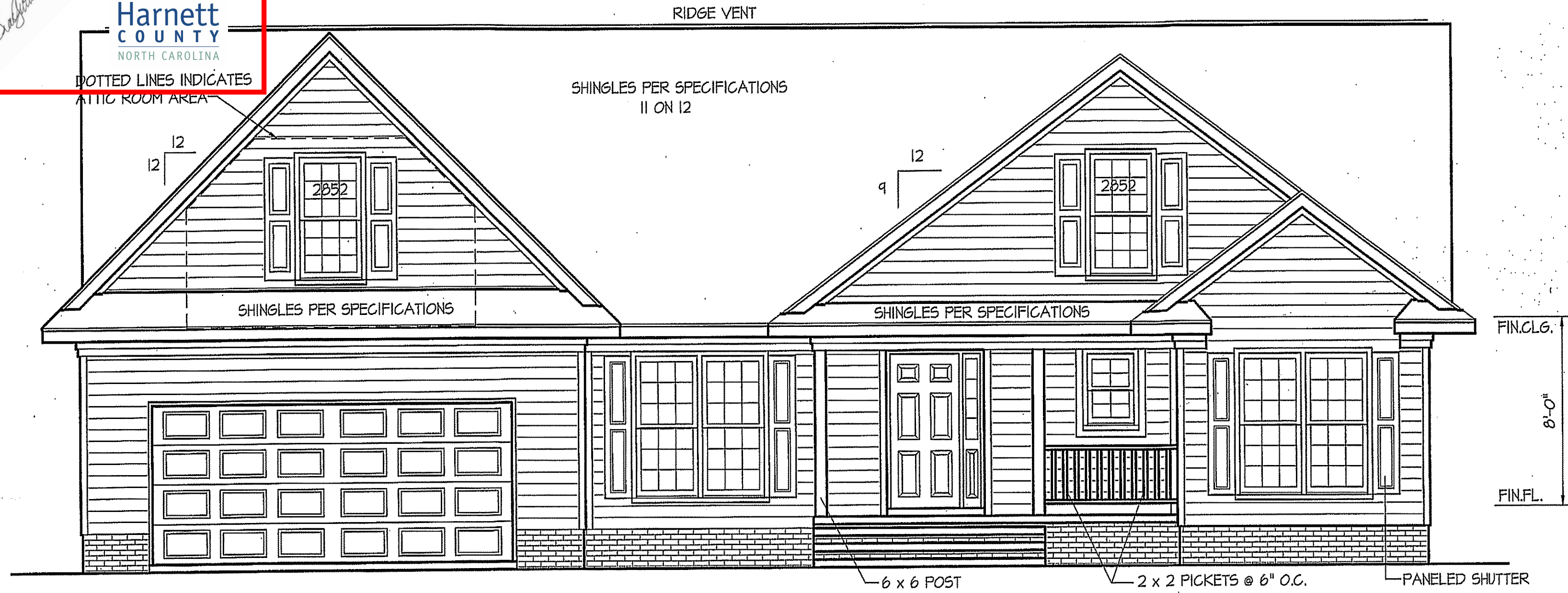
APPROVED
Limited building only review
Permit holder responsible for full compliance with the code

06/19/2020

Boyer



PLAN IS DESIGNED TO MEET THE REQUIREMENTS OF THE NORTH CAROLINA RESIDENTIAL CODE 2018 EDITION



FRONT ELEVATION

SCALE: 1/4" = 1'-0"

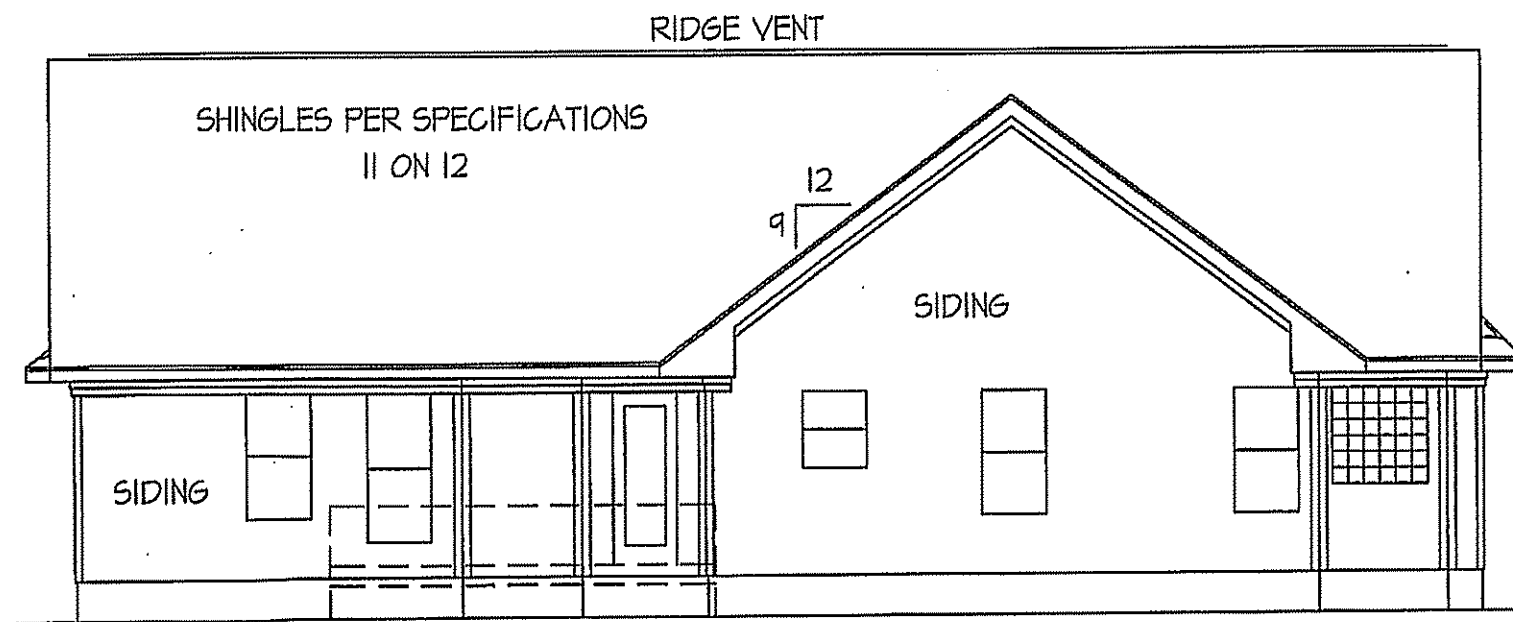
WIND ZONES (PER TABLE R301.2(4))

COUNTY	MPH
HARNETT	120
JOHNSTON	120
SAMPSON	130
WAKE	115

INSULATION and FENESTRATION REQUIREMENTS

CLIMATE ZONE	ZONE-3	ZONE-4
FENESTRATION U-FACTOR	0.35	0.35
GLAZED FENESTRATION SHGC	0.30	0.30
MINIMUM CEILING R-VALUE	R-30	R-30
MINIMUM WALL R-VALUE	R-15, 13+2.5	R-15, 13+2.5
MINIMUM FLOOR R-VALUE	R-19	R-19
MIN. CRAWL SPACE WALL R-VALUE	5/13	10/15
MIN. SLAB R-VALUE	0	R-10

PROVIDE STEPS AS REQUIRED
GRADE MAY VARY - BUILDER TO VERIFY



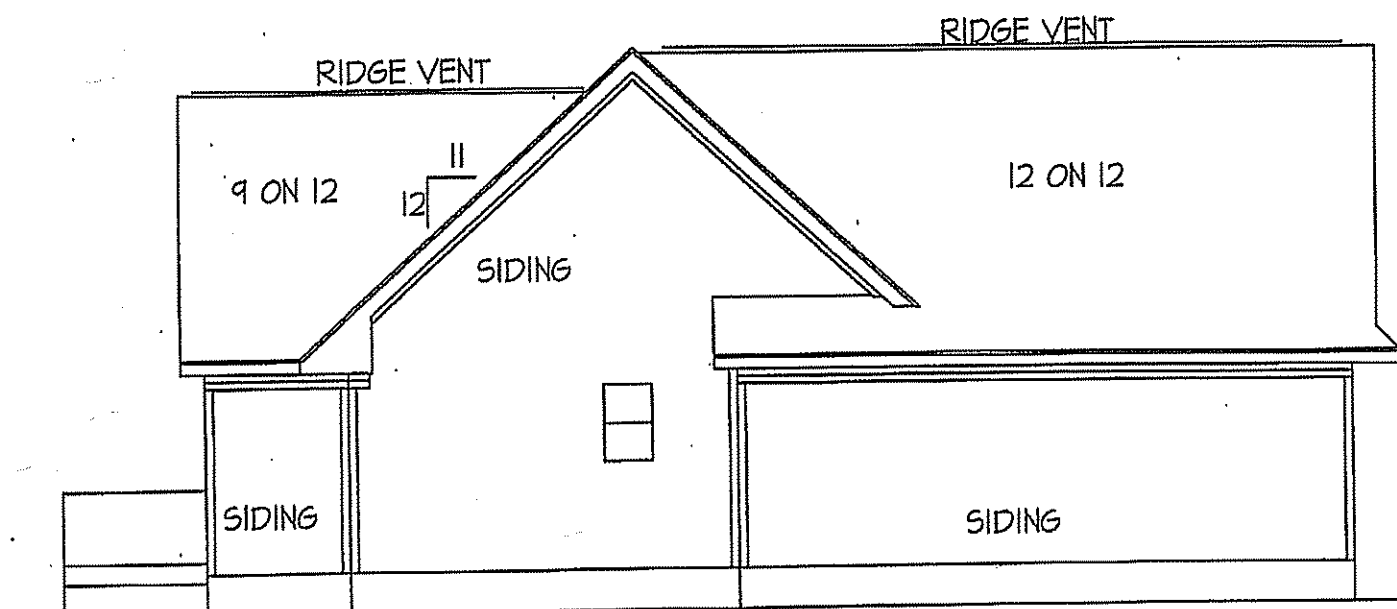
REAR ELEVATION

SCALE: 1/8" = 1'-0"

PROVIDE STEPS AS REQ'D.
BUILDER TO VERIFY GRADE
FN'D. VENTS NOT SHOWN (SEE SHEET #3)

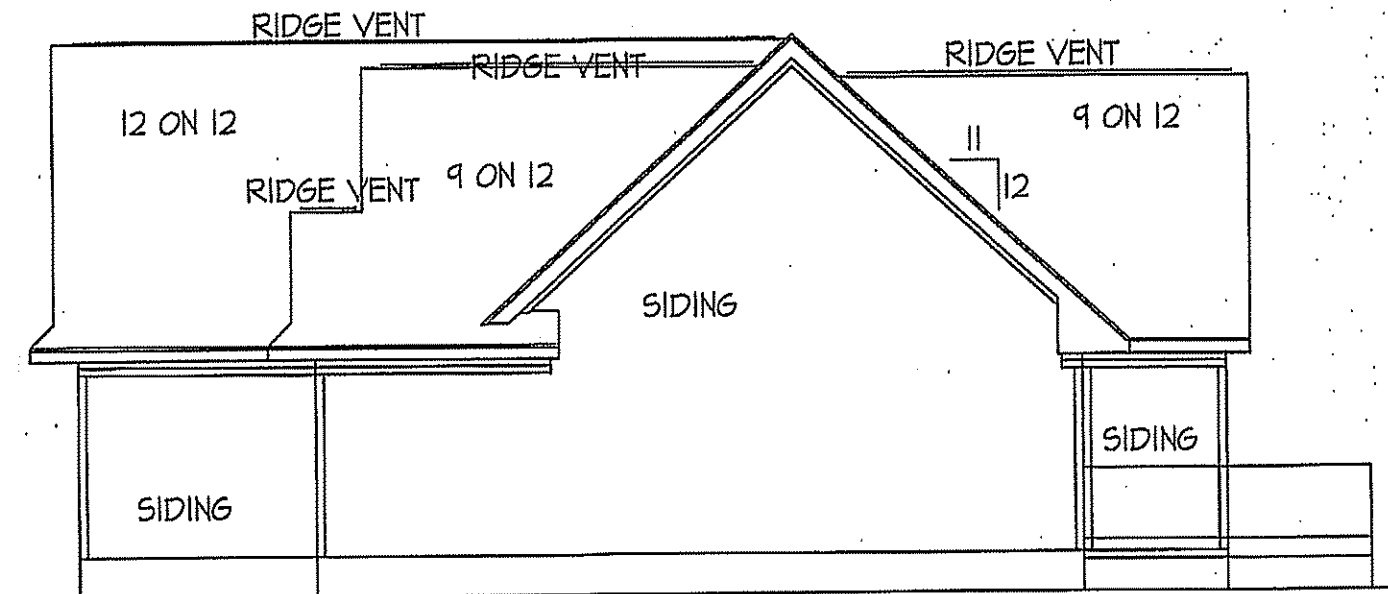
ROOF VENTILATION REQ'MTS.
2099 ATTIC SQ. FT. / 300 = 7.0

PROVIDED ON PLAN
120 L.F. RIDGE VENT = 22.5
163 L.F. SOFFIT VENT = 8.9
TOTAL = 31.40 S.F. FREE NET AREA



LEFT ELEVATION

SCALE: 1/8" = 1'-0"



RIGHT ELEVATION

SCALE: 1/8" = 1'-0"

DATE:

FEB. 26, 2019

WELLONS HOMES

P.O. BOX 730
DUNN, N.C. - 28335
O: (910) 892-3123 FAX: (910) 892-5032
© 2002, WELLONS HOMES



EXCLUSIVE PLAN FOR

WELLONS HOMES
WATERFORD COLLECTION SERIES
HUNTINGTON - A

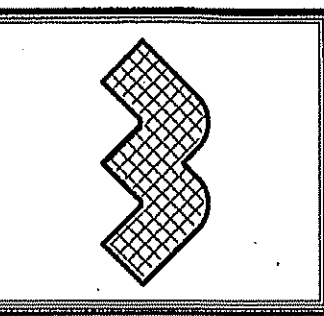
SHEET NO.

1

HEADER SCHEDULE		
SYMBOL #	SIZE	JACKS
H-1	(2) 2x10	1
H-2	(2) 2x10	2
H-3	(2) 2x8	2
H-4	(2) 2x12	2
H-5	(2) 1.75 x 9.25 LVL	3

DATE:
FEB. 26, 2019

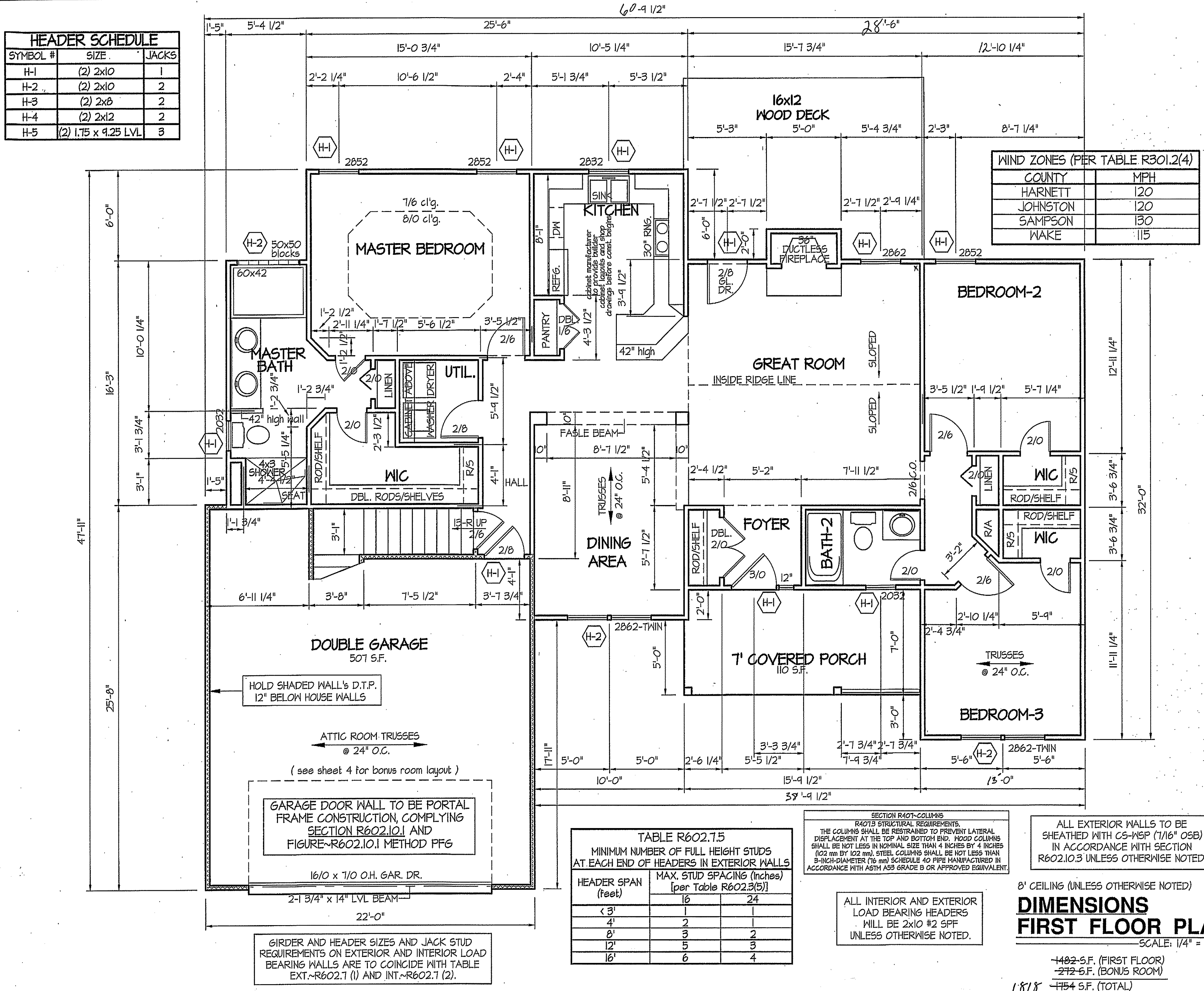
WELLONS HOMES
P.O. BOX 730
DUNN, N.C. - 28335
O: (910) 892-3123 FAX: (910) 892-5032
© 2002, WELLONS HOMES



EXCLUSIVE PLAN FOR
WELLONS HOMES
WATERFORD COLLECTION SERIES
HUNTINGTON - A

PLAN:
SHEET NO.
2

WIND ZONES (PER TABLE R301.2(4))	
COUNTY	MPH
HARNETT	120
JOHNSTON	120
SAMPSON	130
WAKE	115



HOLD SHADED WALL'S D.T.P.
12" BELOW HOUSE WALLS

ATTIC ROOM TRUSSES
@ 24" O.C.
(see sheet 4 for bonus room layout)

GARAGE DOOR WALL TO BE PORTAL
FRAME CONSTRUCTION, COMPLYING
SECTION R602.10.1 AND
FIGURE R602.10.1 METHOD PFG

16/0 x 7/0 O.H. GAR. DR.
2-1 3/4" x 14" LVL BEAM
22'-0"

GIRDER AND HEADER SIZES AND JACK STUD
REQUIREMENTS ON EXTERIOR AND INTERIOR LOAD
BEARING WALLS ARE TO COINCIDE WITH TABLE
EXT.-R602.7 (1) AND INT.-R602.7 (2).

TABLE R602.7.5
MINIMUM NUMBER OF FULL HEIGHT STUDS
AT EACH END OF HEADERS IN EXTERIOR WALLS

HEADER SPAN (feet)	MAX. STUD SPACING (Inches) [per Table R602.3(5)]	
< 3'	16	24
4'	2	1
8'	3	2
12'	5	3
16'	6	4

SECTION R407-COLUMNS
R407.3 STRUCTURAL REQUIREMENTS.
THE COLUMNS SHALL BE RESTRAINED TO PREVENT LATERAL
DISPLACEMENT AT THE TOP AND BOTTOM END. ROOF COLUMNS
SHALL BE NOT LESS IN NOMINAL SIZE THAN 4 INCHES BY 4 INCHES
(102 mm BY 102 mm). STEEL COLUMNS SHALL BE NOT LESS THAN
8-INCH-DIAMETER (16 mm) SCHEDULE 40 PIPE MANUFACTURED IN
ACCORDANCE WITH ASTM A53 GRADE B OR APPROVED EQUIVALENT.

ALL EXTERIOR WALLS TO BE
SHEATHED WITH CS-NSP (7/16" OSB)
IN ACCORDANCE WITH SECTION
R602.10.3 UNLESS OTHERWISE NOTED.

ALL INTERIOR AND EXTERIOR
LOAD BEARING HEADERS
WILL BE 2x10 #2 SPF
UNLESS OTHERWISE NOTED.

8' CEILING (UNLESS OTHERWISE NOTED)

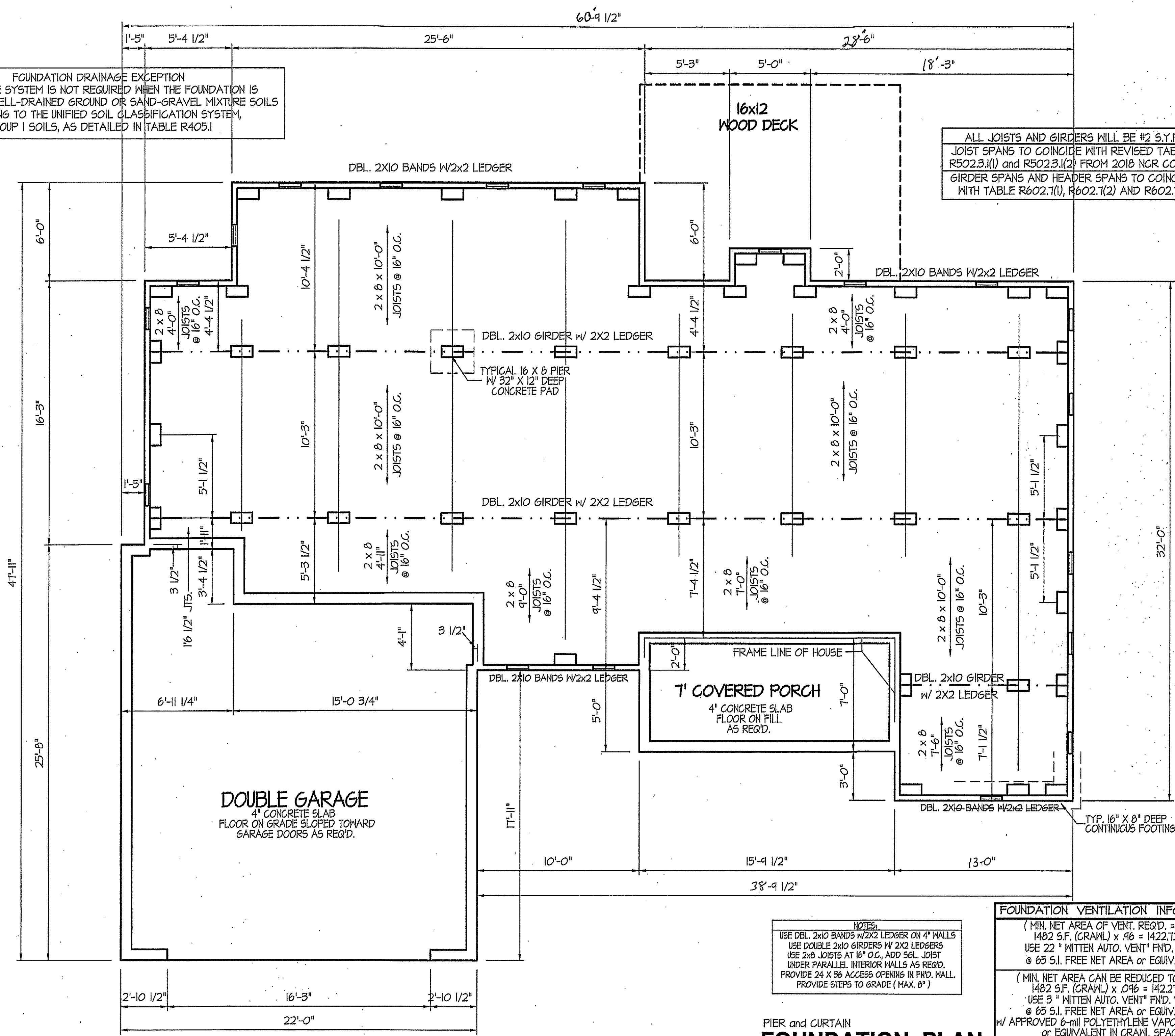
DIMENSIONS
FIRST FLOOR PLAN
SCALE: 1/4" = 1'-0"

1482-S.F. (FIRST FLOOR)
272-S.F. (BONUS ROOM)

1818 1754 S.F. (TOTAL)

FOUNDATION DRAINAGE EXCEPTION
 A DRAINAGE SYSTEM IS NOT REQUIRED WHEN THE FOUNDATION IS
 INSTALLED ON WELL-DRAINED GROUND OR SAND-GRAVEL MIXTURE SOILS
 ACCORDING TO THE UNIFIED SOIL CLASSIFICATION SYSTEM,
 GROUP I SOILS, AS DETAILED IN TABLE R405.1

ALL JOISTS AND GIRDERS WILL BE #2 S.Y.P.
 JOIST SPANS TO COINCIDE WITH REVISED TABLES
 R502.3.1(1) AND R502.3.1(2) FROM 2018 NCR CODES
 GIRDER SPANS AND HEADER SPANS TO COINCIDE
 WITH TABLE R602.7(1), R602.7(2) AND R602.7(3).



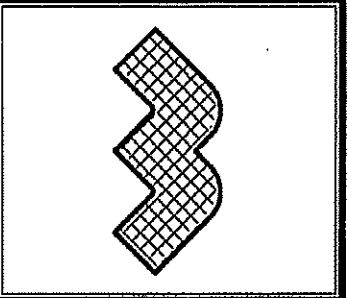
NOTES:
 USE DBL. 2x10 BANDS W/2X2 LEDGER ON 4\"/>

FOUNDATION VENTILATION INFORMATION
 (MIN. NET AREA OF VENT. REQ'D. = 1/150)
 1482 S.F. (CRAWL) x .96 = 1422.72 S.I.
 USE 22\"/>

PIER and CURTAIN
FOUNDATION PLAN
 SCALE: 1/4\"/>

DATE:
 FEB. 26, 2019

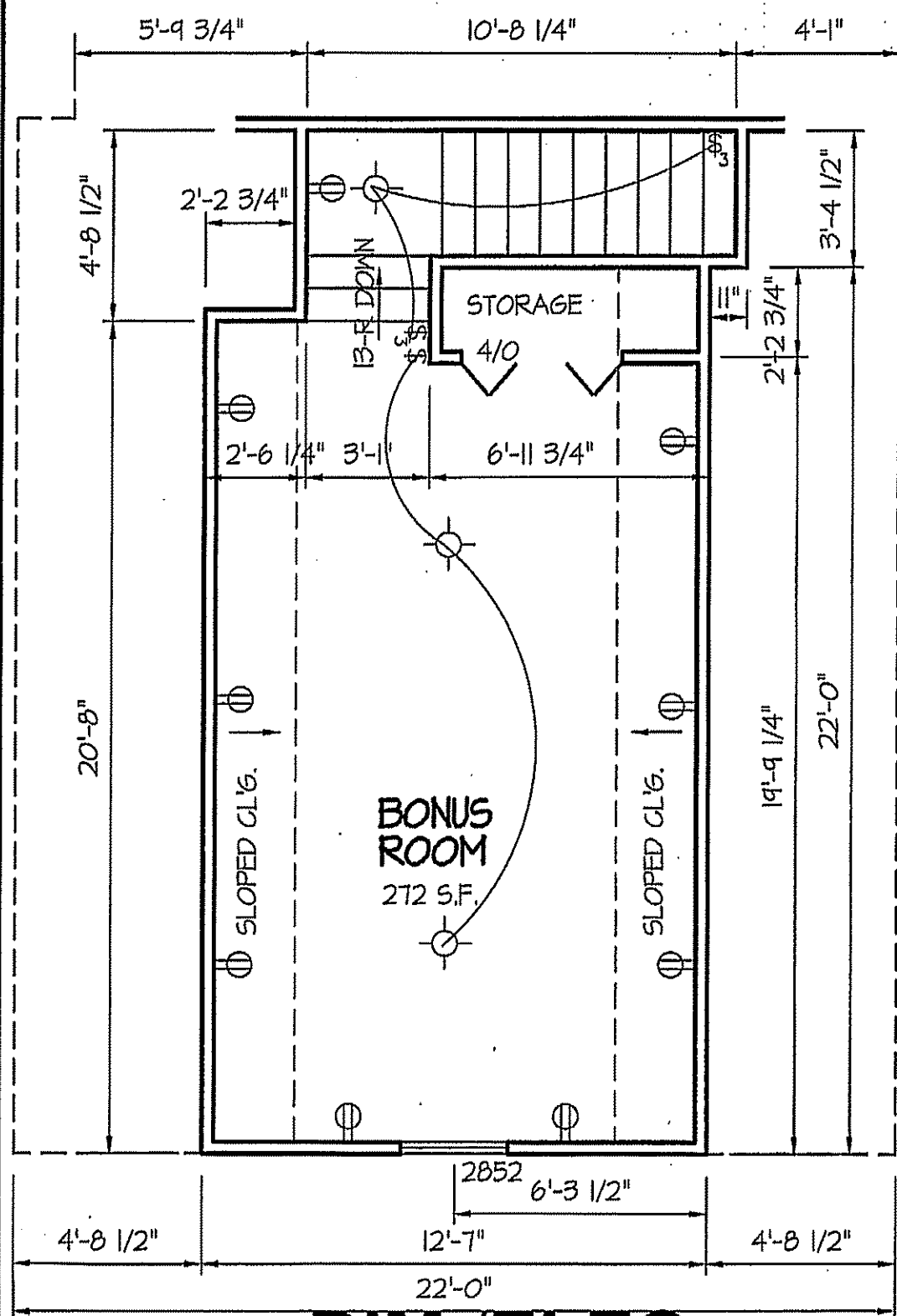
WELLONS HOMES
 P.O. BOX 730
 DUNN, N.C. - 28335
 O: (910) 892-3123 FAX: (910) 892-5032
 © 2002, WELLONS HOMES



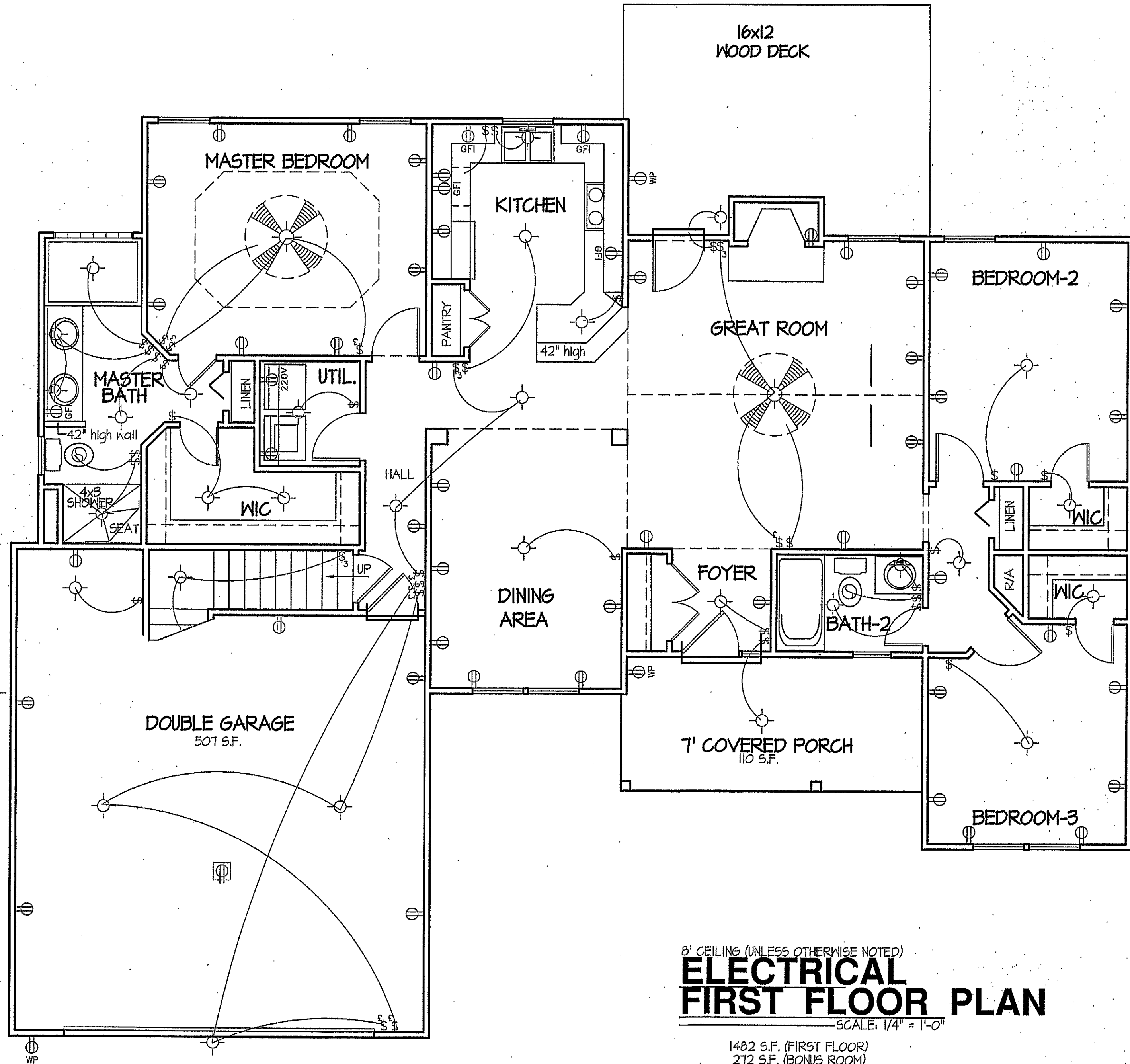
EXCLUSIVE PLAN FOR
WELLONS HOMES
 WATERFORD COLLECTION SERIES
HUNTINGTON - A

PLAN:
 SHEET NO.
3

COMPUTER FILE - WELLONS 2019 PLANS



**DIM./ELEC.
BONUS ROOM**
SCALE: 1/4" = 1'-0"

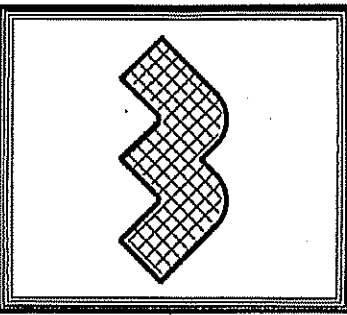


8' CEILING (UNLESS OTHERWISE NOTED)
**ELECTRICAL
FIRST FLOOR PLAN**
SCALE: 1/4" = 1'-0"

1482 S.F. (FIRST FLOOR)
272 S.F. (BONUS ROOM)
1754 S.F. (TOTAL)

DATE:
FEB. 26, 2019

WELLONS HOMES
P.O. BOX 730
DUNN, N.C. - 28335
O: (910) 892-3123 FAX: (910) 892-5032
© 2002, WELLONS HOMES

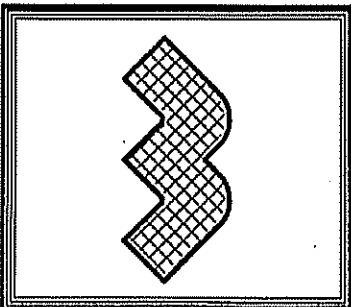


EXCLUSIVE PLAN FOR
WELLONS HOMES
WATERFORD COLLECTION SERIES
HUNTINGTON - A
PLAN:

SHEET NO.
4

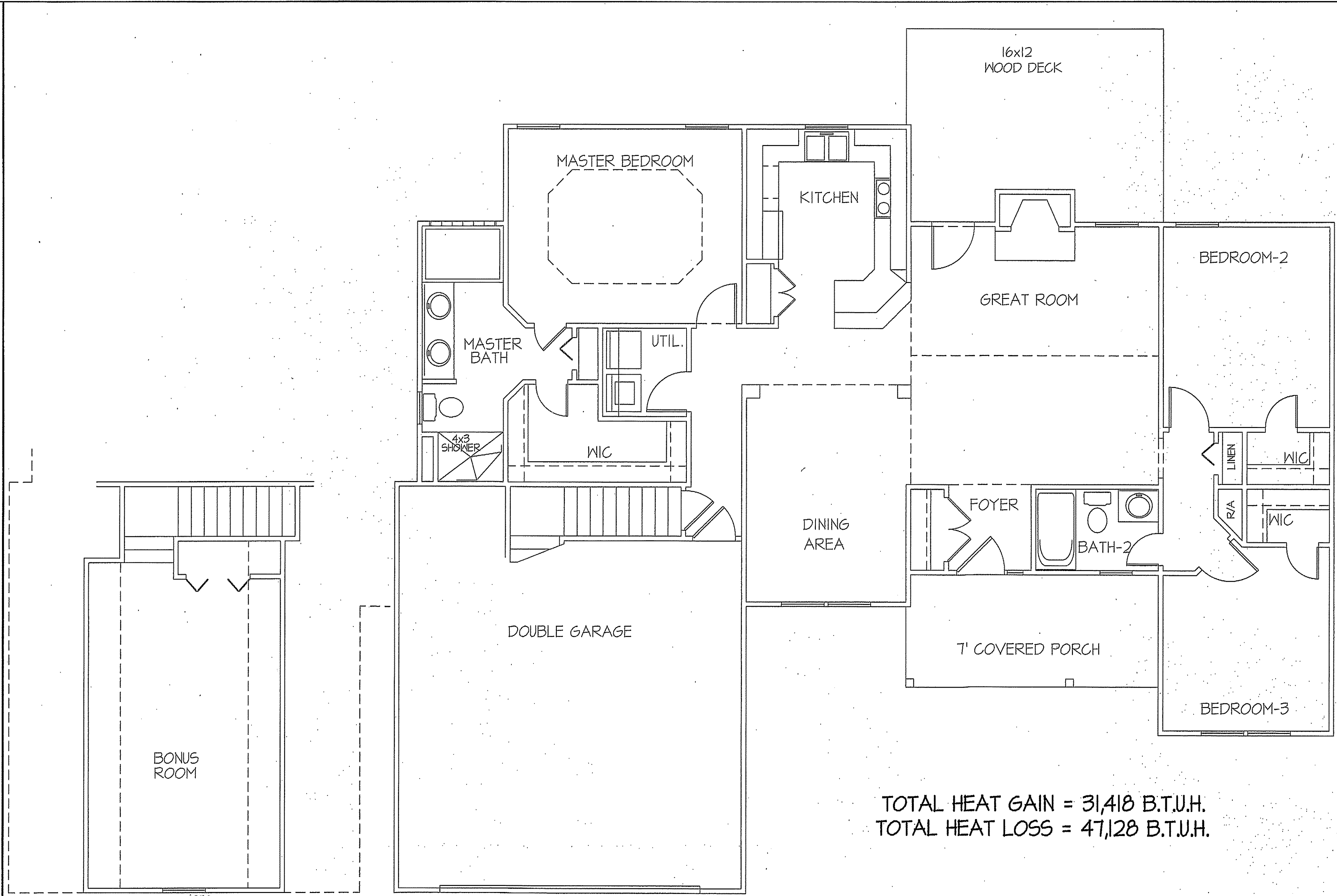
DATE:
FEB. 26, 2019

WELLONS HOMES
P.O. BOX 730
DUNN, N.C. - 28335
O: (910) 892-3123 FAX: (910) 892-5032
© 2002, WELLONS HOMES



EXCLUSIVE PLAN FOR
WELLONS HOMES
WATERFORD COLLECTION SERIES
HUNTINGTON - A

PLAN:
SHEET NO.
5



2052
TOTAL HEAT GAIN = 5,740 B.T.U.H.
TOTAL HEAT LOSS = 8,622 B.T.U.H.

**HVAC
BONUS ROOM**
SCALE: 1/4" = 1'-0"

NOTE:
HVAC CONTRACTOR TO PROVIDE OWNERS AND BUILDERS
UNIT INFORMATION, BTUH REQUIREMENTS, AND
DUCT LAYOUTS BEFORE CONSTRUCTION BEGINS.

TOTAL HEAT GAIN = 31,418 B.T.U.H.
TOTAL HEAT LOSS = 47,128 B.T.U.H.

8' CEILING (UNLESS OTHERWISE NOTED)
**HVAC
FIRST FLOOR PLAN**
SCALE: 1/4" = 1'-0"
1482 S.F. (FIRST FLOOR)
272 S.F. (BONUS ROOM)
1754 S.F. (TOTAL)

COMPUTER FILE - WELLONS 2019 PLANS

DATE:

FEB. 26, 2019

WELLONS HOMES

P.O. BOX 730
DUNN, N.C. - 28335
O: (910) 892-3123 FAX: (910) 892-5032
© 2002, WELLONS HOMES



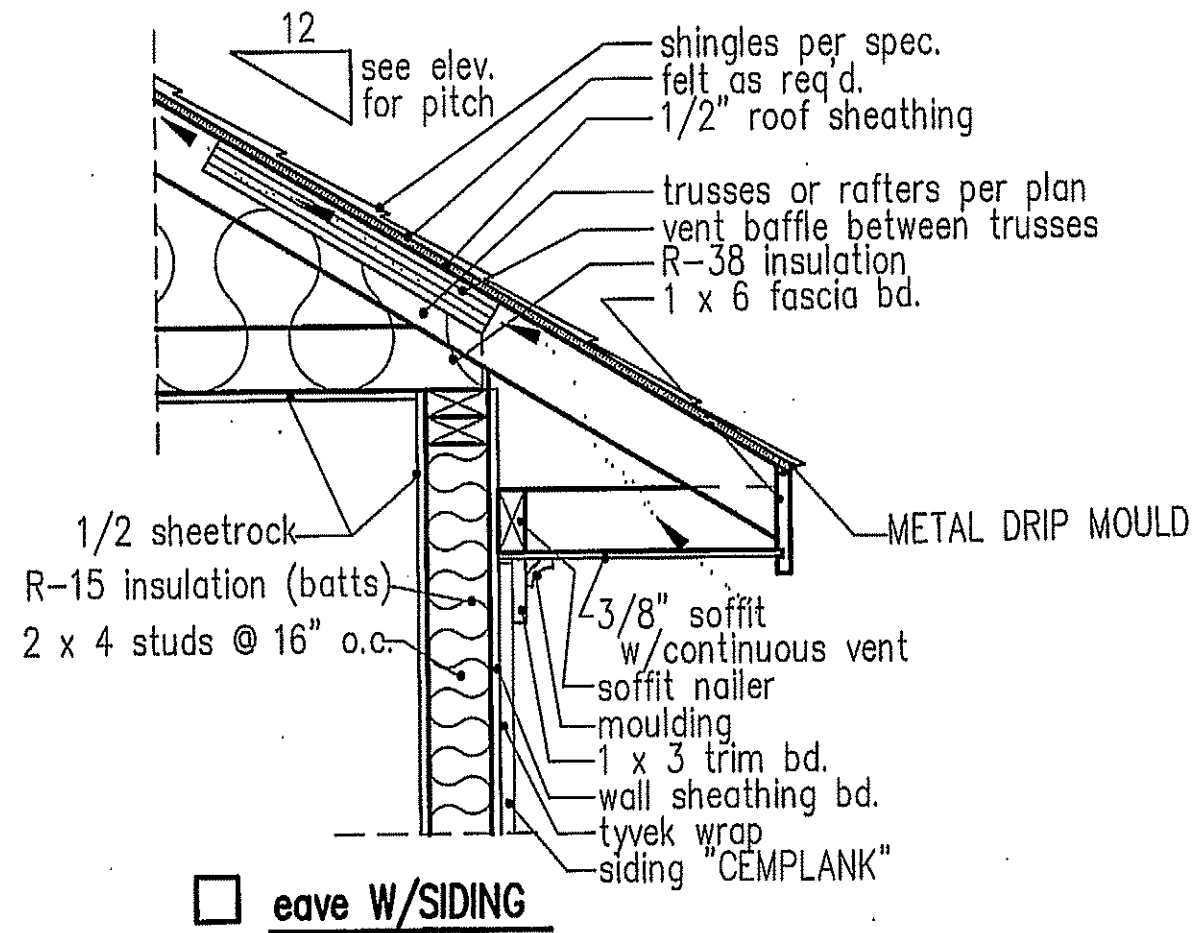
EXCLUSIVE PLAN FOR
WELLONS HOMES

WATERFORD COLLECTION SERIES
HUNTINGTON - A

PLAN:

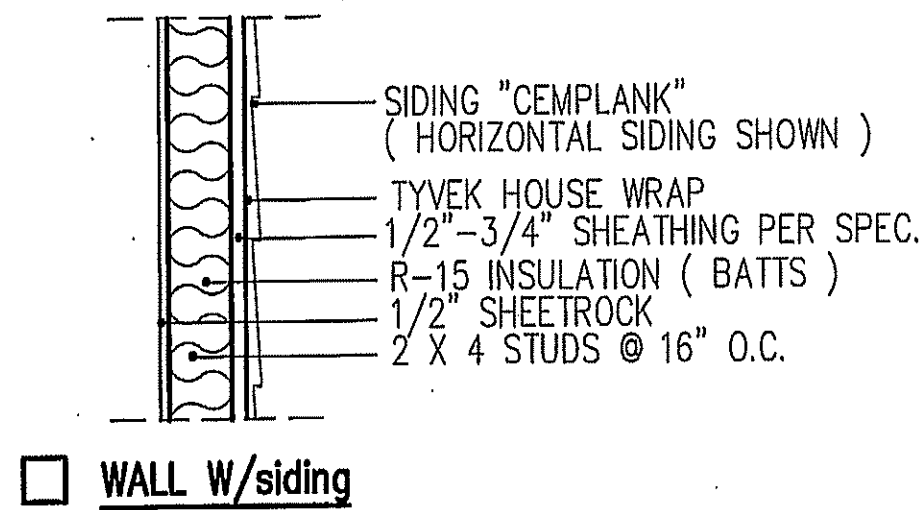
SHEET NO.

6

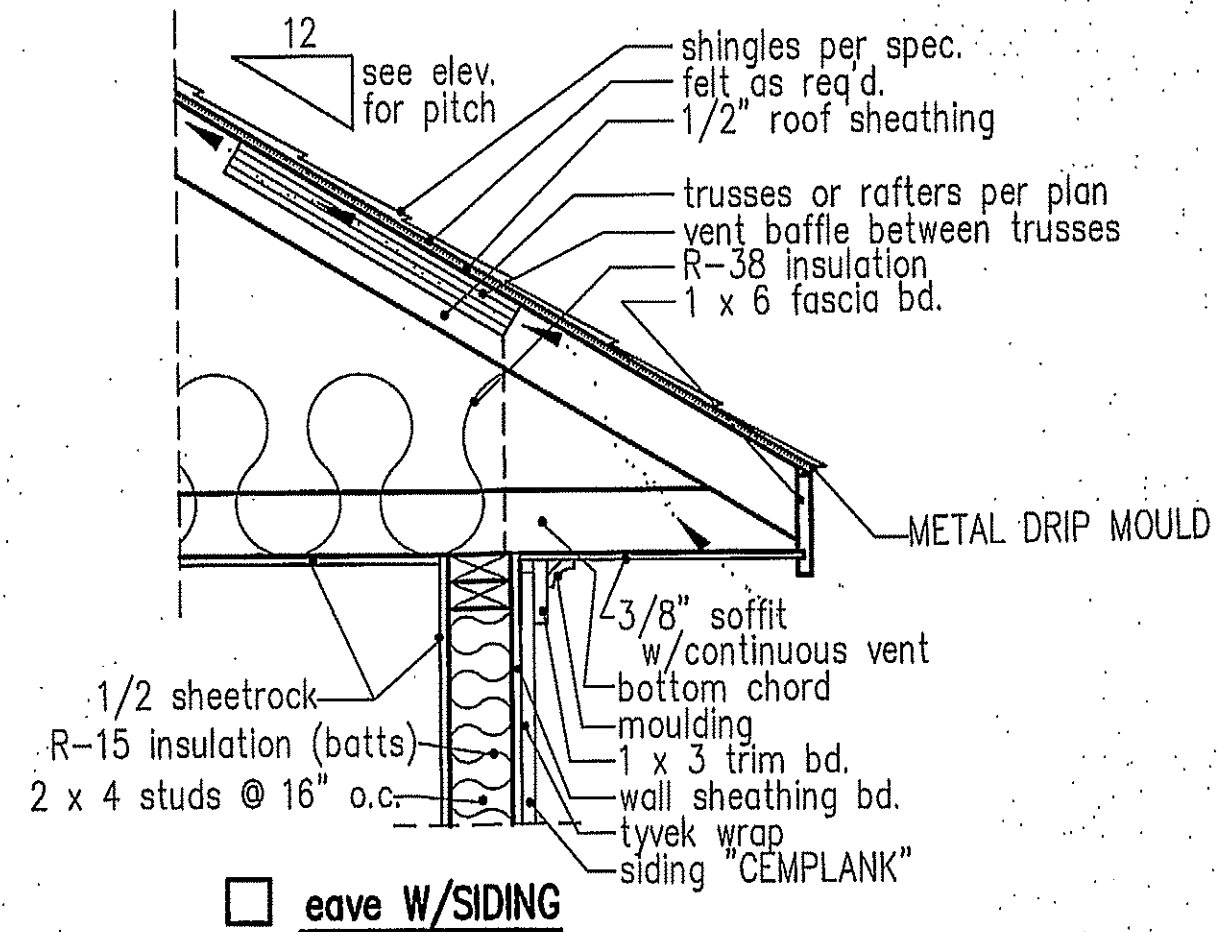
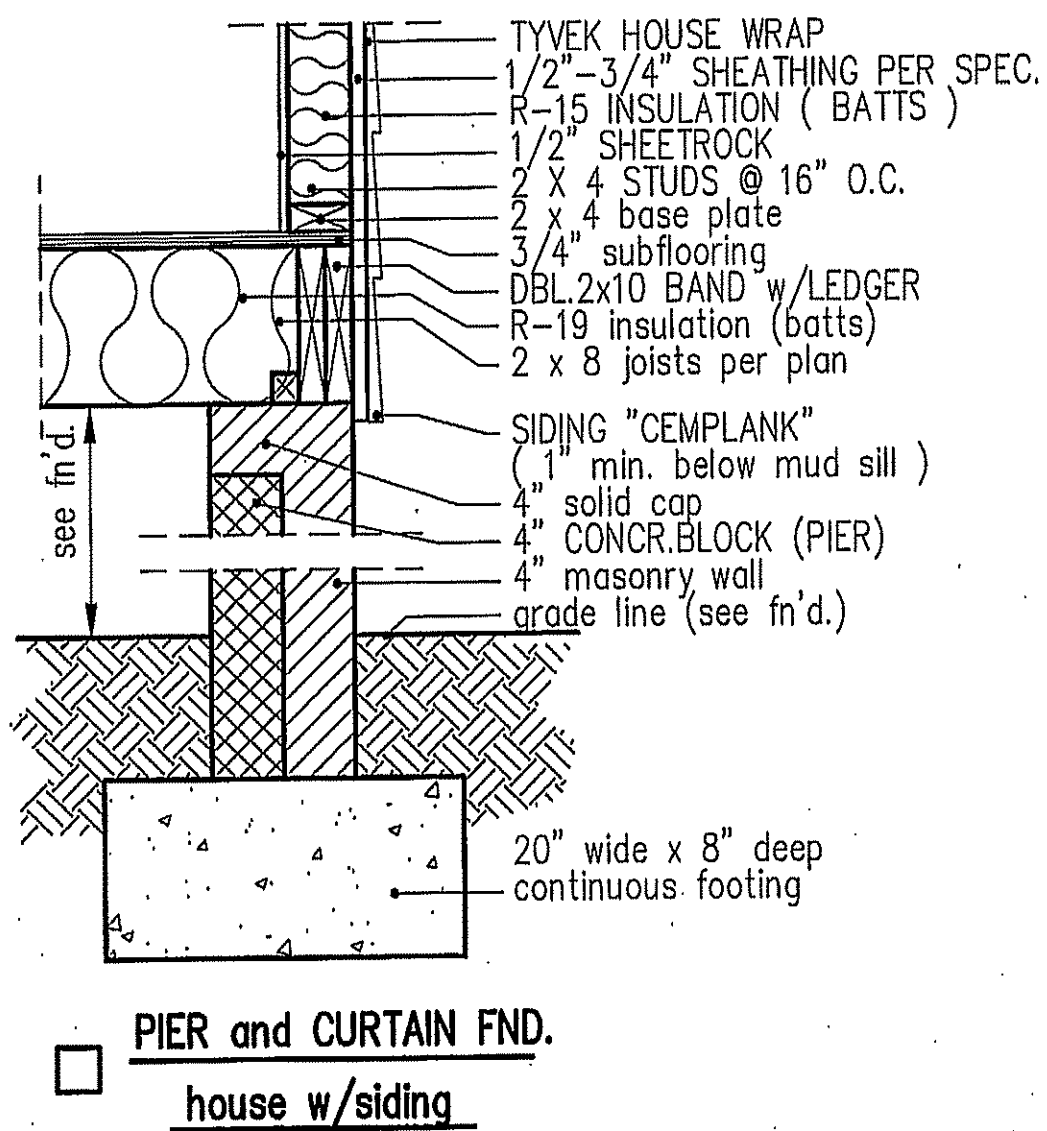


NOTE: OVERHANG DISTANCE NOTED ON ELEVATION SHEET IS ALWAYS MEASURED FROM FRAME LINE

standard eave details

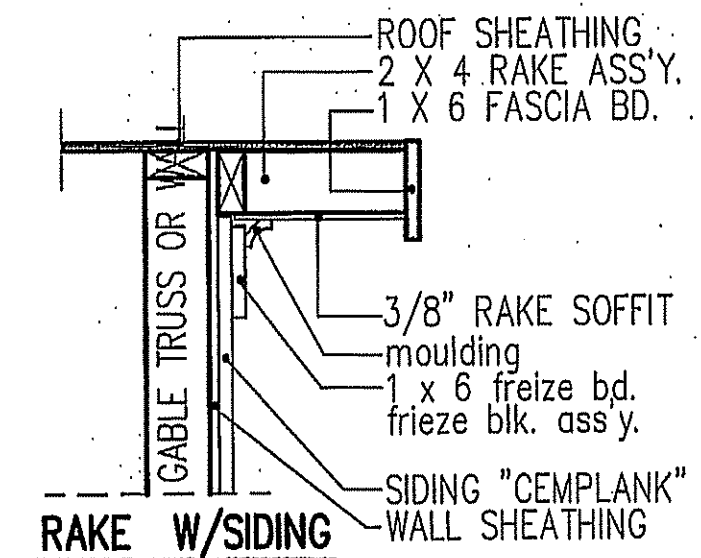
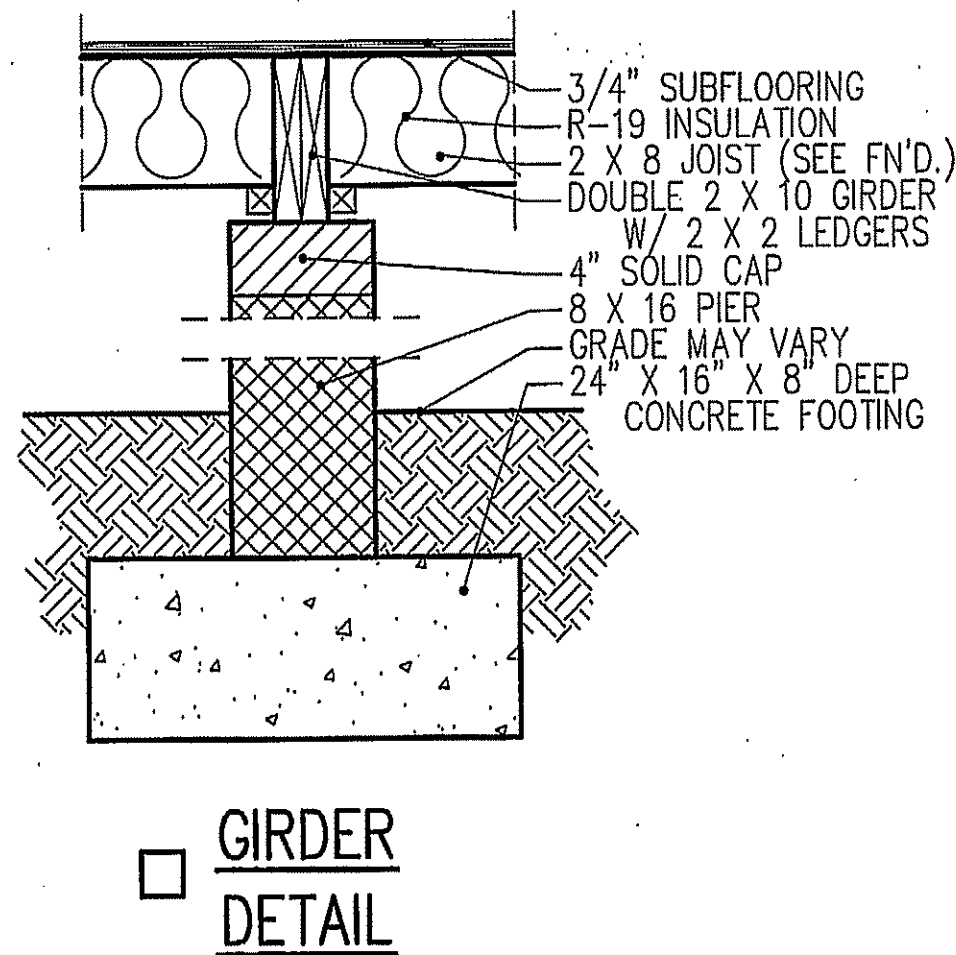


intermediate wall details



NOTE: OVERHANG DISTANCE NOTED ON ELEVATION SHEET IS ALWAYS MEASURED FROM FRAME LINE

cantilevered eave details



NOTE: OVERHANG DISTANCE NOTED ON ELEVATION SHEET IS ALWAYS MEASURED FROM FRAME LINE

THIS LAYOUT IS INTENDED FOR THE PURPOSE OF TRUSS LOCATION AND PLACEMENT ONLY. REFER TO THE BUILDING PLANS FOR ACTUAL BUILDING CONSTRUCTION.



DEDICATED TO QUALITY AND EXCELLENCE
200 EMMETT ROAD
DUNN, NORTH CAROLINA 28334
PHONE: 910-892-8400

PROJECT: 24 Planters Glen Huntington A

CUSTOMER: Wellon Homes

MODEL: Huntington A GOL

QUOTE #: 24020

SCALE: N.T.S

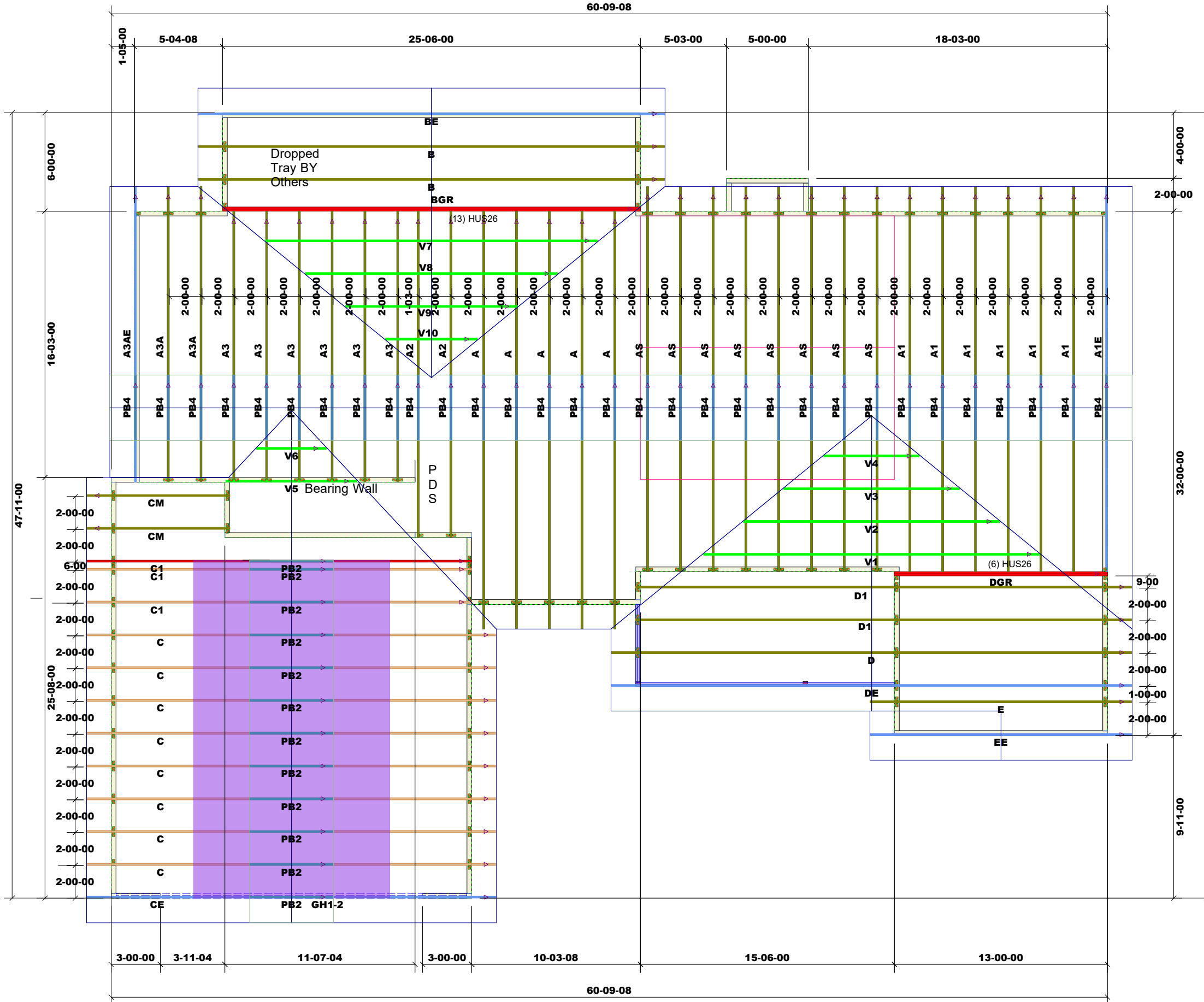
PRINT DATE: 6/9/2020

DRAWN BY:

TOP LIVE LOAD: 20.0 lb/ft²
TOP DEAD LOAD: 10.0 lb/ft²
BOTTOM DEAD LOAD: 10.0 lb/ft²
WIND SPEED: 130 mph

GENERAL NOTES:

DO NOT CUT OR MODIFY TRUSSES
TRUSSES ARE SPACED 24" ON CENTER UNLESS OTHERWISE NOTED
REFER TO THE INDIVIDUAL TRUSS DESIGN DRAWINGS FOR THE LOCATION OF LATERAL BRACING AND MULTI-PLY CONNECTION REQUIREMENTS.
PER ANSI TPI 1-2002 THE TRUSS ENGINEER IS RESPONSIBLE FOR TRUSS TO TRUSS CONNECTIONS AND TRUSS PLY TO PLY CONNECTIONS. THIS TRUSS CONNECTION PLAN RECOMMENDS TRUSS TO BEARING CONNECTIONS AND TRUSS TO BEAM CONNECTIONS WHICH SHALL BE REVIEWED BY THE BUILDING DESIGNER. IT IS THE RESPONSIBILITY OF THE BUILDING DESIGNER TO RESOLVE ALL ROOF FORCES ADEQUATELY TO THE FOUNDATION.



Products					
Fab Type	Net Qty	Plies	Product	Length	PlotID
MFD	2	2	1-3/4" x 11-7/8" VERSA-LAM® 2.0 3100 SP	22' 0"	GH1-2

1st Level Roof Area 3370.9	2nd Level Roof Area 0
-------------------------------	--------------------------