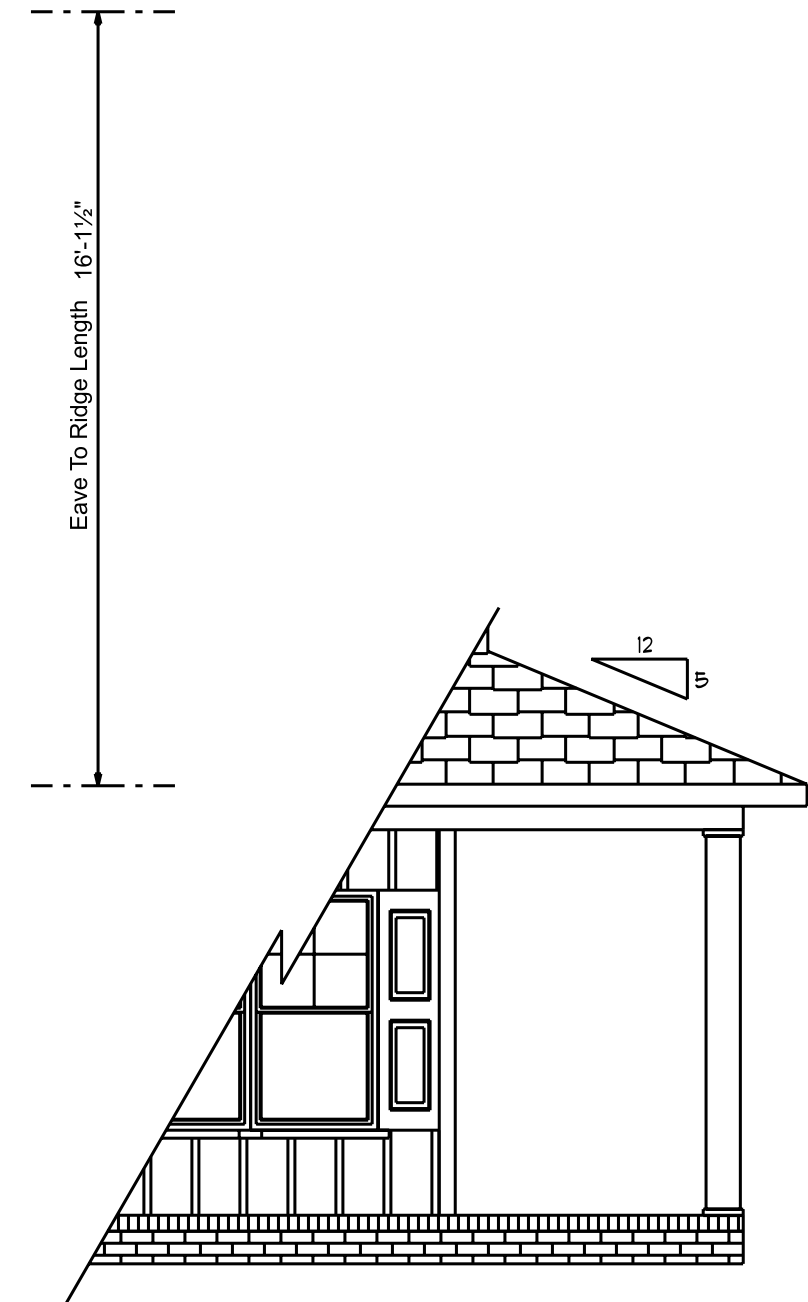


Continuous Ridge Vent



Optional
3rd Car

Front Elevation
Scale: 1/4" = 1'0"



Optional
Wrap-Around
Porch

ATTIC VENTILATION

1266 SQ.FT. OF ATTIC / 150 = 8.44 SQ.FT.
TOTAL NET FREE VENTILATING AREA.

VENTILATION MAY BE REDUCED 50%
PROVIDED AT LEAST 50 PERCENT AND
NOT MORE THAN 80 PERCENT OF THE
REQUIRED VENTILATING AREA IS
PROVIDED BY VENTILATORS LOCATED IN
THE UPPER PORTION OF THE SPACE TO
BE VENTILATED AT LEAST 3'-0" ABOVE
EAVE OR CORNICE VENTS WITH THE
BALANCE OF THE REQUIRED VENTILATION
PROVIDED BY EAVE OR CORNICE VENTS.

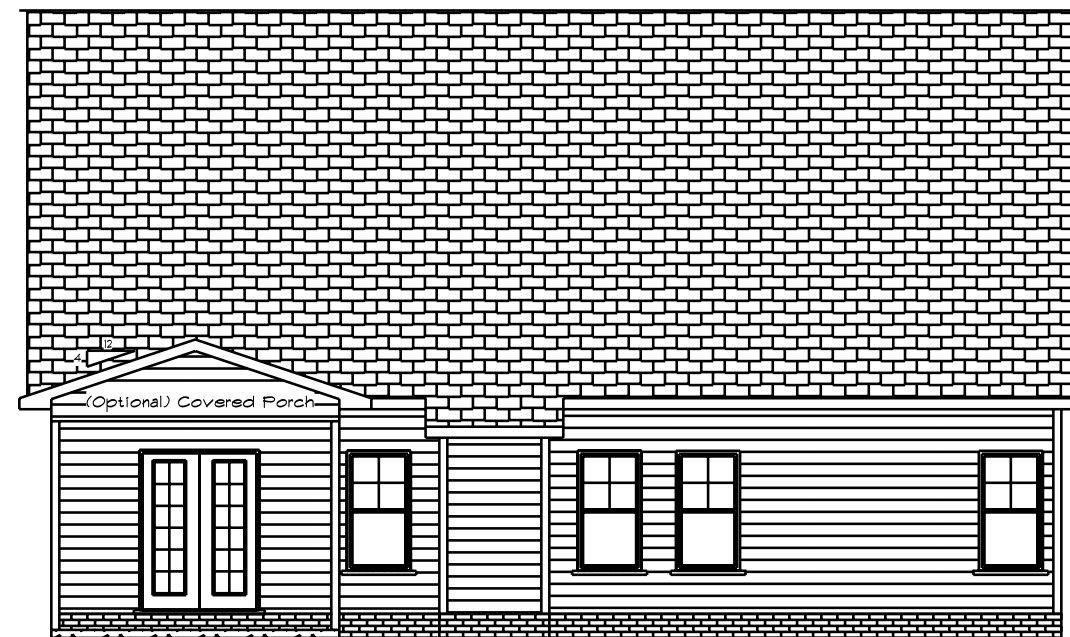
This Plan Is Designed To Meet
The Requirements Of The 2018
Residential Building Code

1/2" Continuous Wood Sheathing On
All exterior Walls
Exterior Finish Is Vinyl Siding, Vinyl
Shakes Or Manufactured Stone

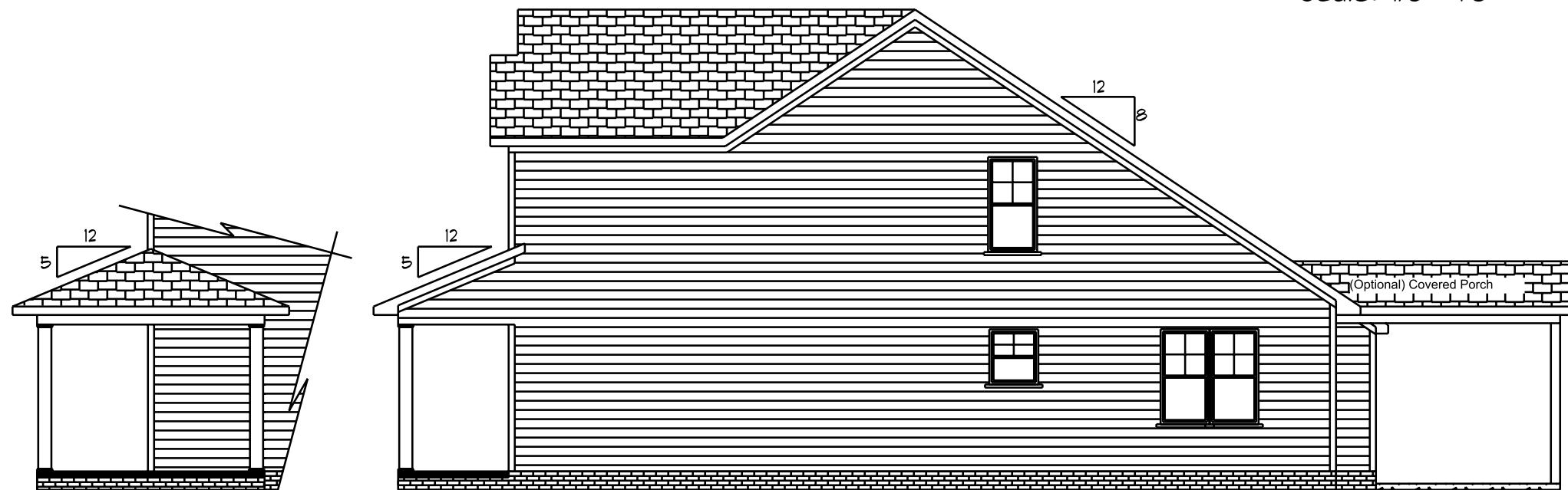
Fenestration And Insulation Requirements

Climate Zone	3A	4A
Fenestration U-Factor	0.35	0.35
Glazed Fenestration SHGC	0.3	0.3
Minimum Ceiling R-Value	30	30/38
Minimum Wall R-Value	13	15
Minimum Slab R-Value	0	10
Minimum Floor R-Value	19	19
Glazing Pressure	+/-2 psf	+/-2 psf

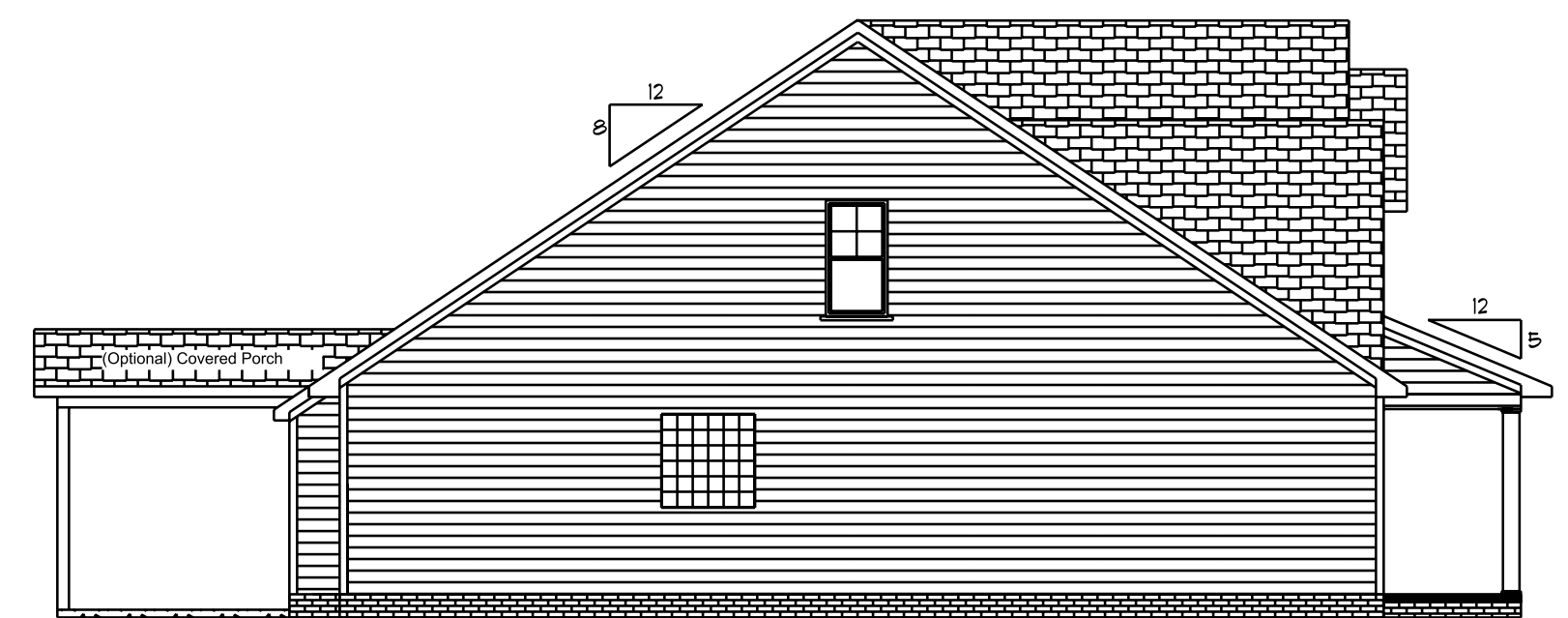
Total Glazing Area = 255.68 Sq.Ft.



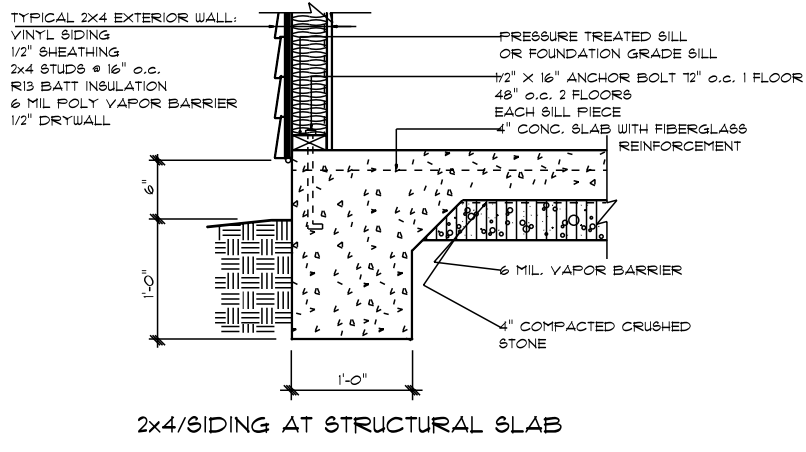
Rear Elevation
Scale: 1/8" = 1'0"



Right Elevation
Scale: 1/8" = 1'0"



Left Elevation
Scale: 1/8" = 1'0"



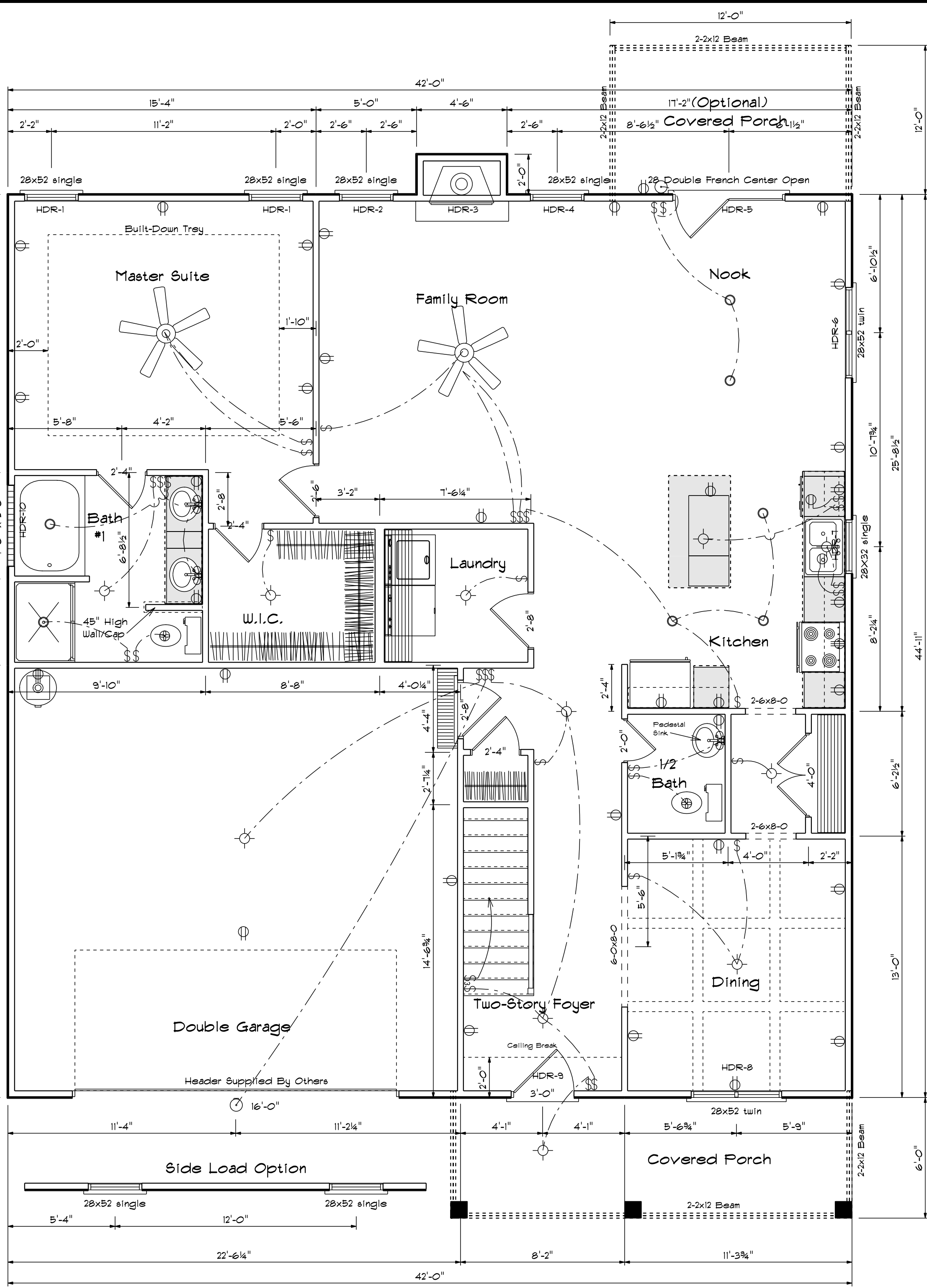
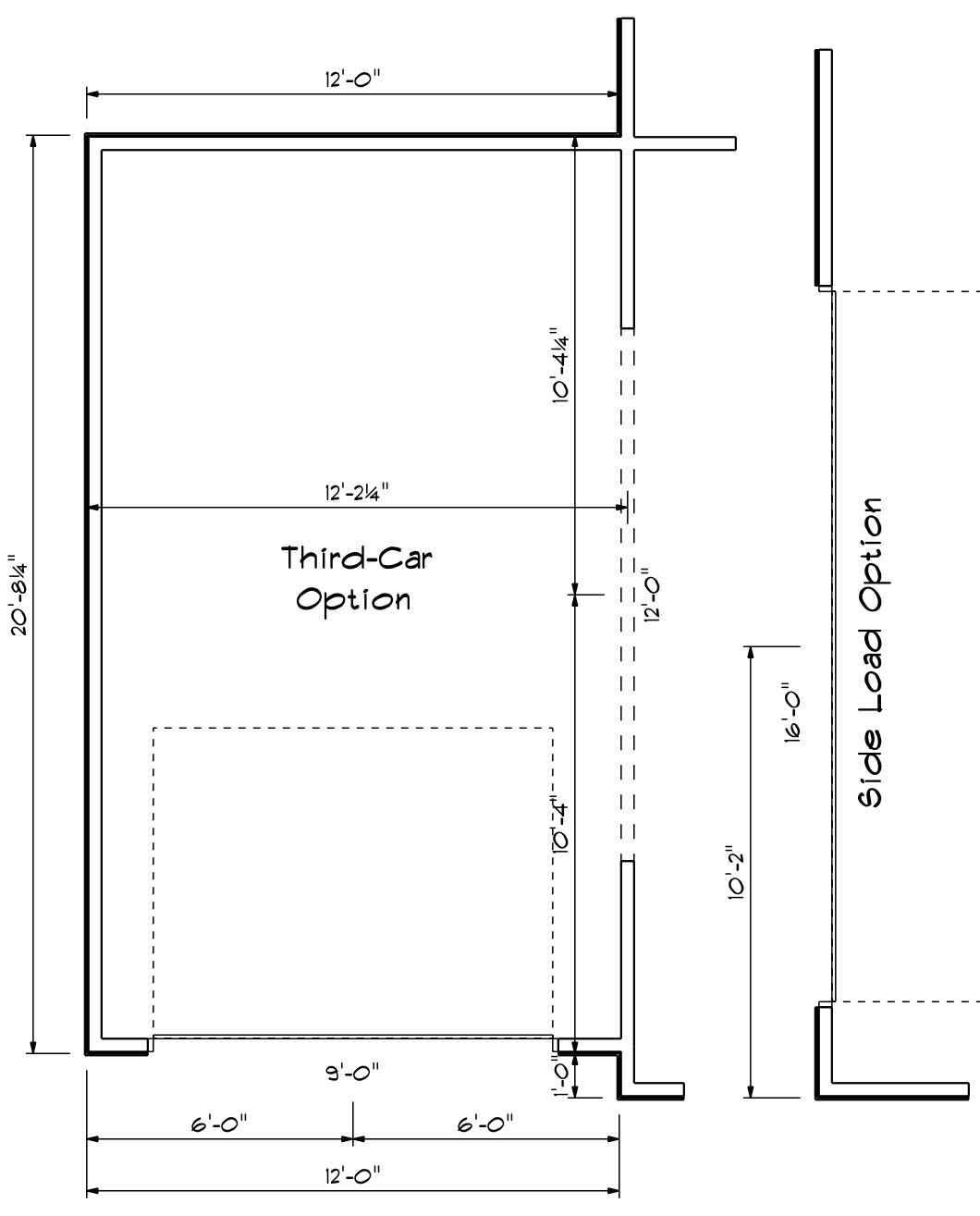
All Headers Double #2 Pine With Double Jacks When Length Over 6'-0"

HDR	Size	Length
1	2x10	3' 3 1/2"
2	2x12	3' 3 1/2"
3	2x10	4' 3 1/2"
4	2x10	2' 3 1/2"
5	2x10	5' 7 1/2"
6	2x10	5' 7 1/2"
7	2x10	3' 3 1/2"
8	2x10	5' 7 1/2"
9	2x10	3' 3 1/2"
10	2x10	4' 3 1/2"

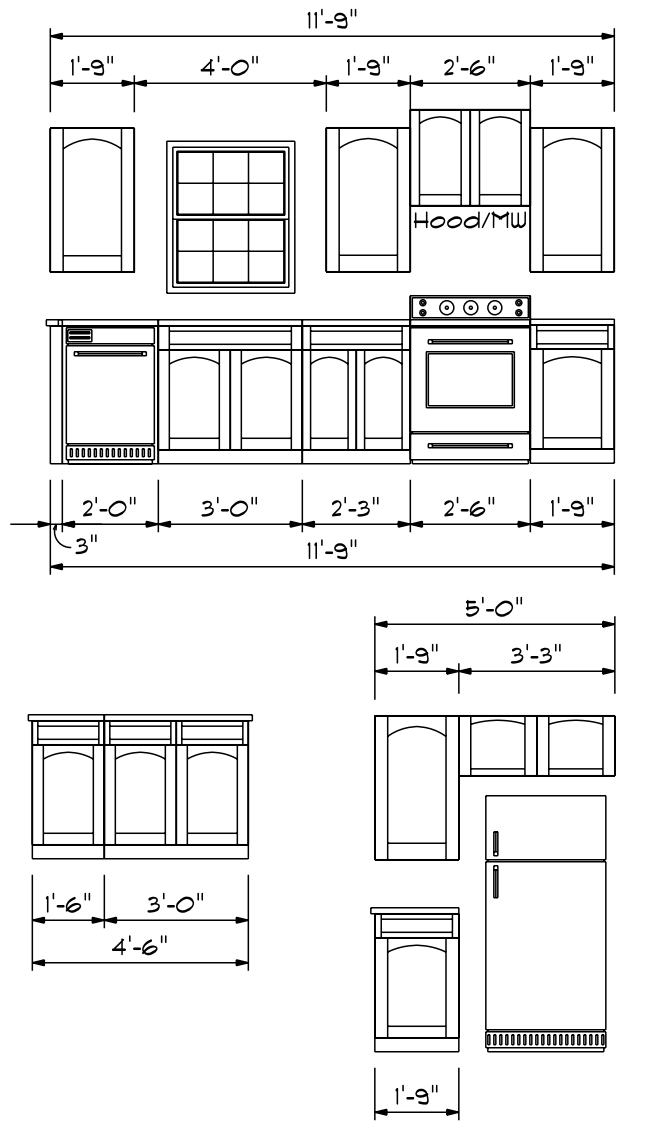
Note: ALL EXTERIOR WALLS TO BE SHEATHED WITH 7/16 OSB For Bacewall Support.

1st Floor Glazing Area = 133.07 Sq.Ft.

PRODUCT CODE	SIZE	COUNT	WIDTH	HEIGHT
60X80 LH ENTRY - 2 SL	5'-0"	1	5'-0"	6'-9 1/2"
28X32 single	2'-8" x 3'-2"	1	2'-8"	3'-2"
28X52 single	2'-8" x 5'-2"	4	2'-8"	5'-2"
28X52 twin	5'-4" x 5'-2"	1	5'-4"	5'-2"
4.0x2.0 Glass Block	4'-0" x 2'-0"	1	4'-0"	2'-0"



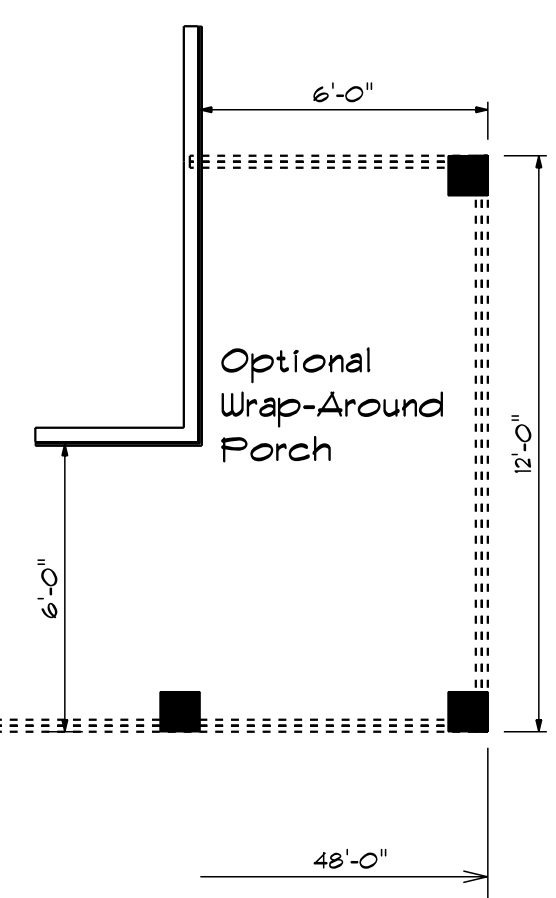
Kitchen Cabinets



First Floor Plan

Areas

First Floor	1412
Second Floor	840
Total Heated	2252
With Optional Bdrm #2	2310
Garage	479
Front Porch	115
Optional Third Car Garage	240
Optional Rear Covered Porch	144



Bass Designs
2121 Chimney Pt.
Linden N.C. 28356
910-864-9310

DATE: 6/2/2020
REVISED
DRAWING*

SCALE: 1/4"
DRAWN BY
APPROVED

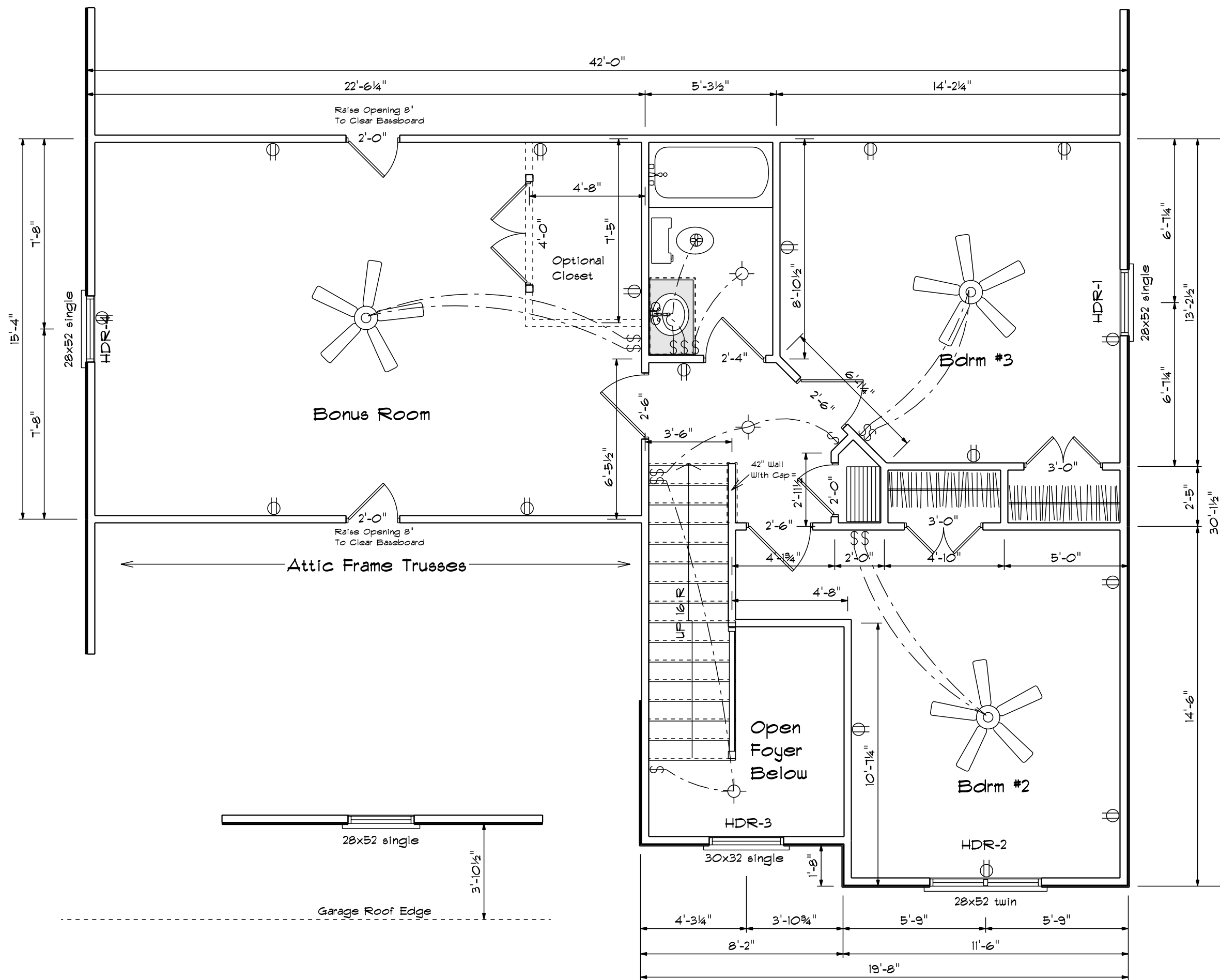
The Stockton XL

All Headers Double #2
Fins With Double Jacks
When Length Over 6'-0"

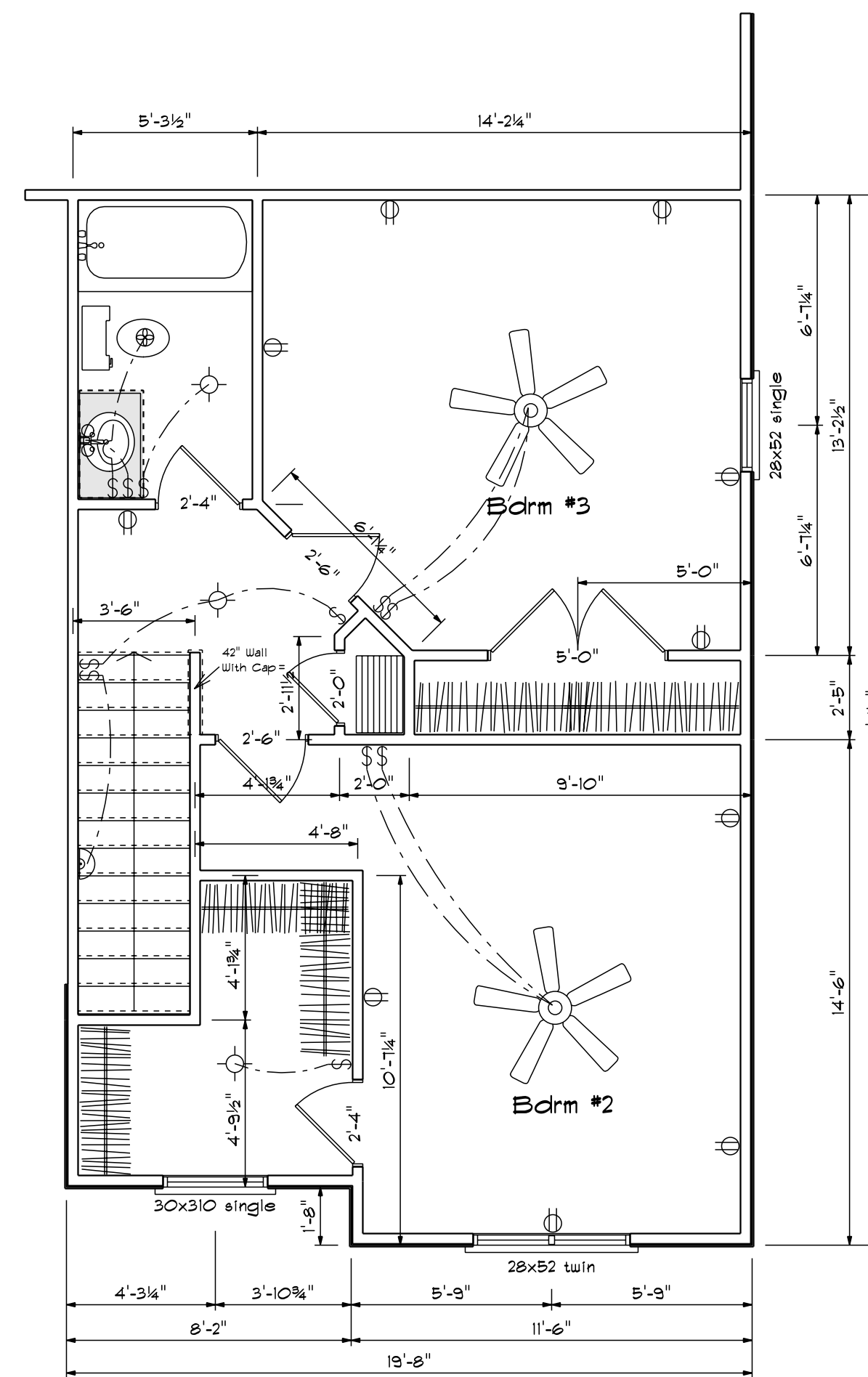
HDR	Size	Length
1	2x10	3' 3 1/2"
2	2x12	5' 7 1/2"
3	2x10	3' 3 1/2"
4	2x10	3' 3 1/2"

FIRST FLOOR OPENING SCHEDULE			
PRODUCT CODE	SIZE	HINGE	COUNT
32X80 COLONIAL A 1	2'-8"	R	1
36X80 Entry	3'-0"	L	1
28 Double French Center Open	5'-4"	NL	1
108X84 - 4 PANEL - 2 WINDOW (Optional)	9'-0"	U	1
192X84 - 8 PANEL - 4 WINDOW	16'-0"	U	2
2-6 Door Unit	2'-6"	L	1
2-0 Door Unit	2'-0"	L	1
2-4 Door Unit	2'-4"	L	1
2-4 Door Unit	2'-4"	R	2
2-8 Door Unit	2'-8"	L	1
4-0 Double Hung Door Unit	4'-0"	LR	1
28X32 single	2'-8" x 3'-2"	N	1
28x52 single	2'-8" x 5'-2"	N	4
28x52 twin	4'-6" x 5'-2"	NN	2
1-0x4-0 glass block	4'-0" x 2'-0"	N	1

SECOND FLOOR OPENING SCHEDULE			
PRODUCT CODE	SIZE	HINGE	COUNT
2-0 Door Unit	2'-0"	R	1
2-6 Door Unit	2'-6"	R	1
2-0 Door Unit	2'-0"	R	1
2-0 Door Unit	2'-0"	L	1
2-4 Door Unit	2'-4"	L	1
2-6 Door Unit	2'-6"	R	1
2-6 Door Unit	2'-6"	L	1
3-0 Double Hung Door Unit	3'-0"	LR	2
4-0 Double Hung Door Unit	4'-0"	LR	1
28x52 single	2'-8" x 5'-2"	N	1
28x52 single	2'-8" x 5'-2"	N	2
28x52 twin	4'-6" x 5'-2"	NN	1
30x32 single	3'-0" x 3'-2"	N	1

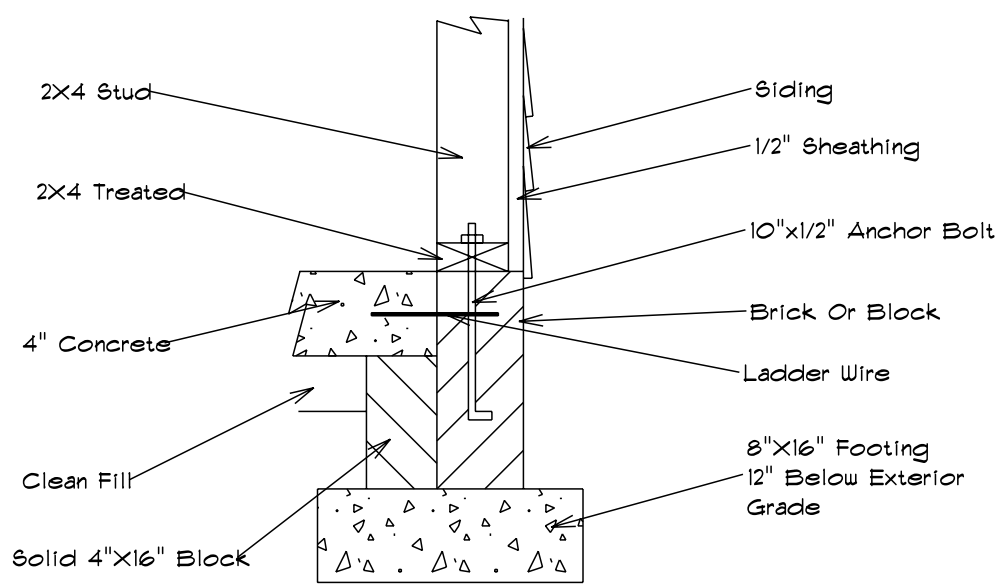


Second Floor Plan

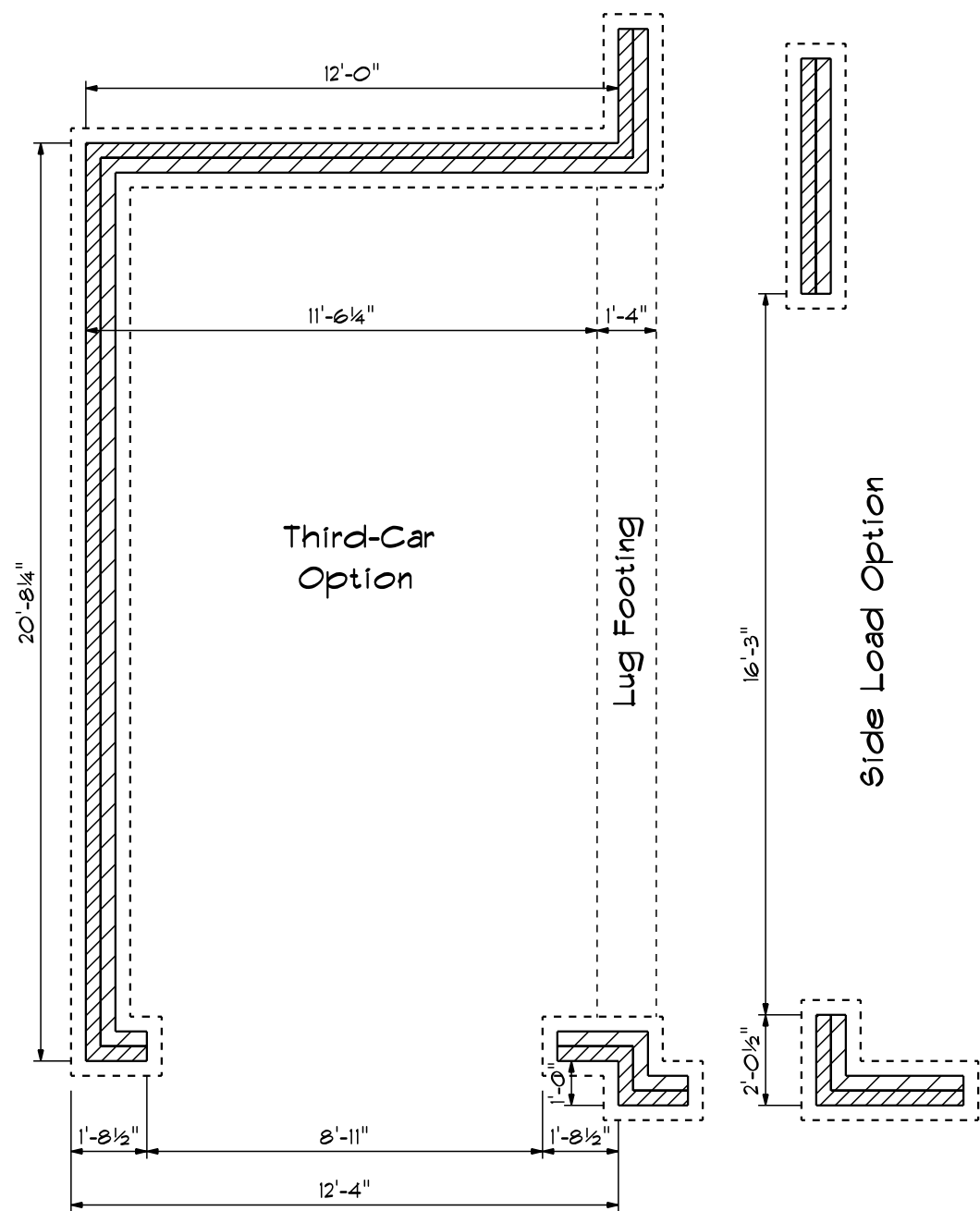
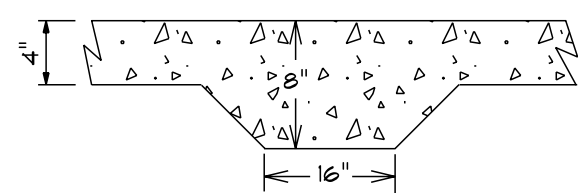


(Optional) Bdrm #2
+ 58 Sq.Ft.

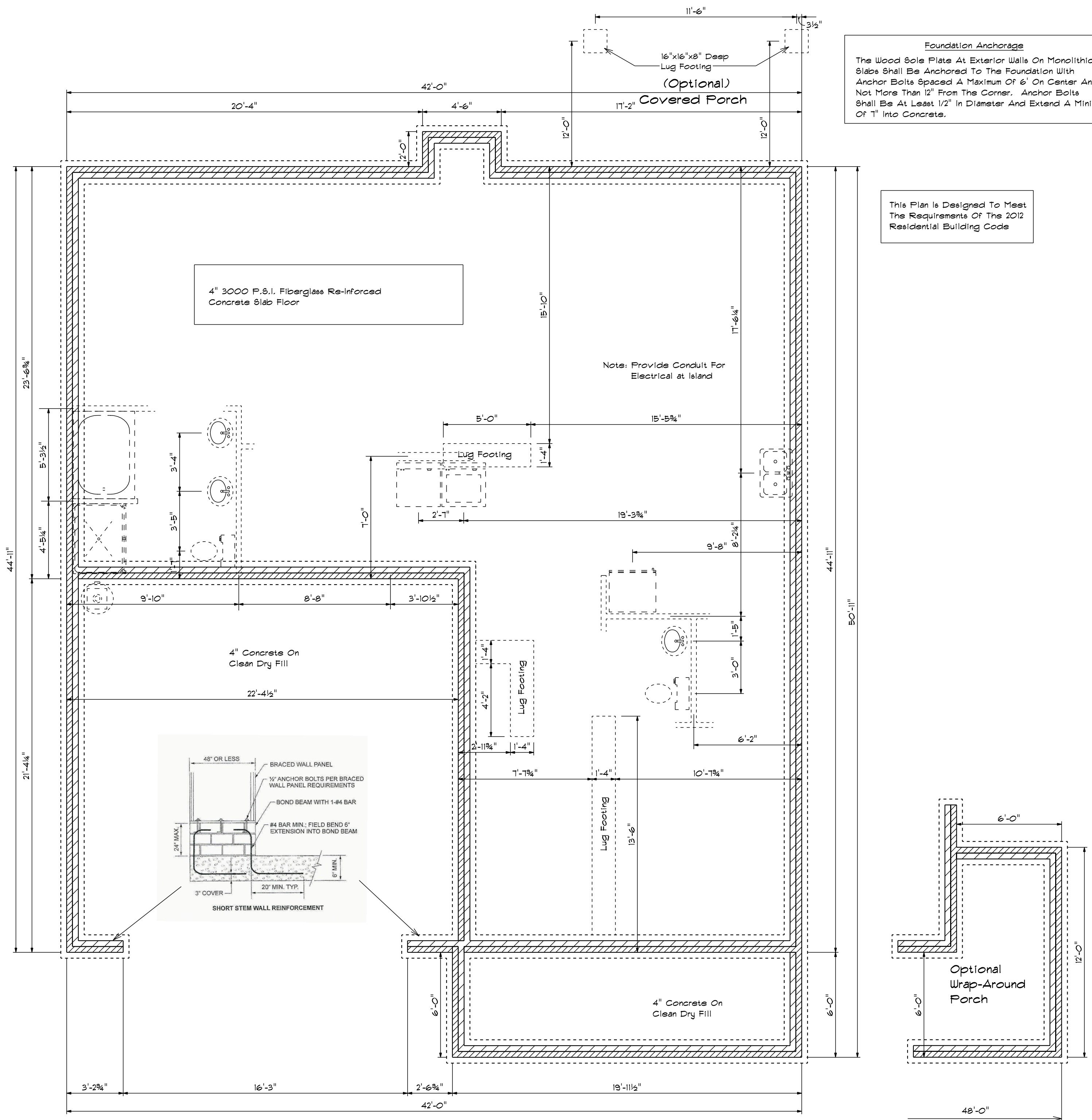
Foundation Detail Siding



Lug Footing Detail

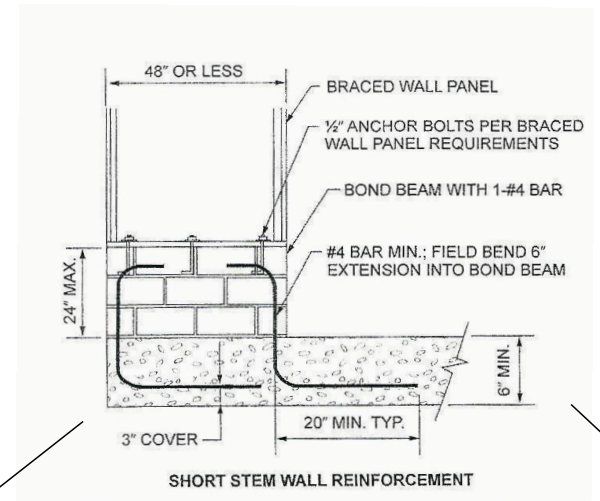


Foundation Plan



Foundation Anchorage
 The Wood Sole Plate At Exterior Walls On Monolithic Slabs Shall Be Anchored To The Foundation With Anchor Bolts Spaced A Maximum Of 6' On Center And Not More Than 12" From The Corner. Anchor Bolts Shall Be At Least 1/2" In Diameter And Extend A Minimum Of 1" Into Concrete.

This Plan is Designed To Meet The Requirements Of The 2012 Residential Building Code



Base Designs
 2727 Chimney Pt.
 Linden N.C. 28356
 910-864-1253

DATE 6/6/2020
 REVISED
 DRAWING*

SCALE 1/4"
 DRAWN BY
 APPROVED

The Stockton XL